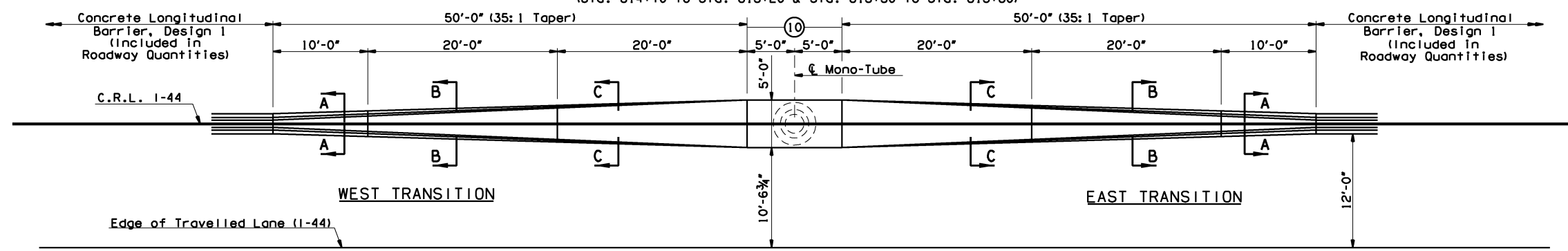


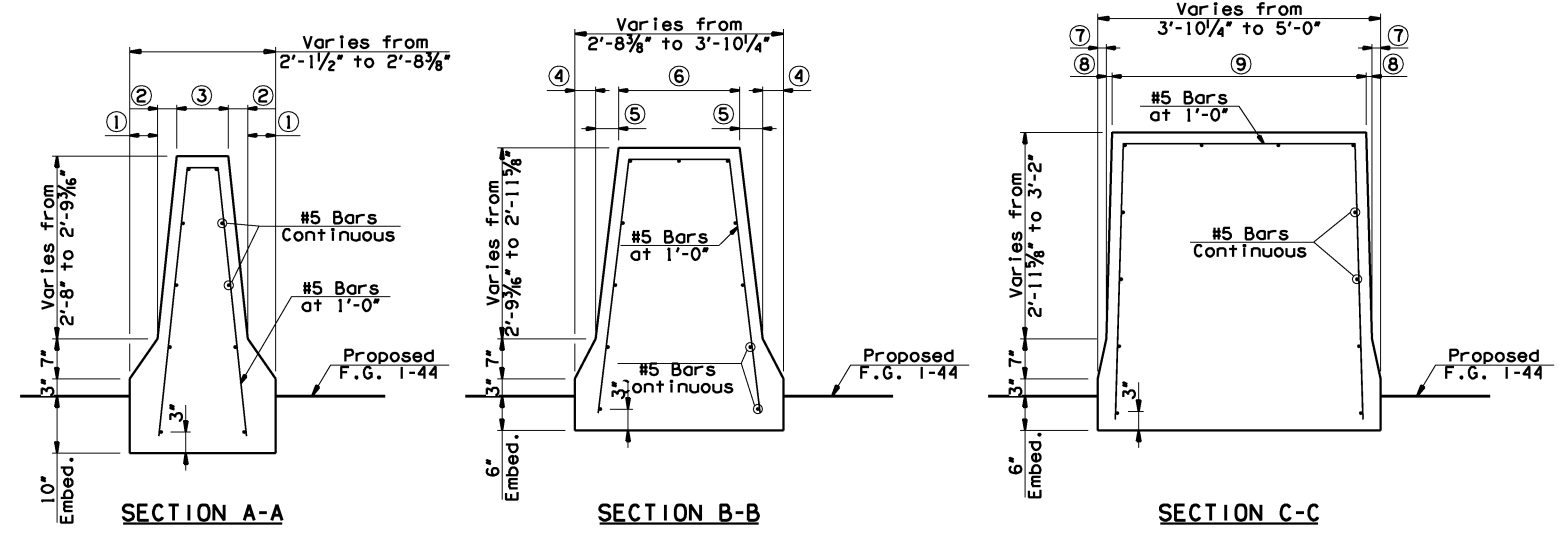
**ELEVATION - MEDIAN BARRIER TRANSITION**  
(Looking Forward Station, North)

(Sta. 771+43 to Sta. 771+93 & Sta. 772+03 to Sta. 772+53)  
(Sta. 780+60 to Sta. 781+10 & Sta. 781+20 to Sta. 781+70)  
(Sta. 814+70 to Sta. 815+20 & Sta. 815+30 to Sta. 815+80)



**PLAN - MEDIAN BARRIER TRANSITION**

(Sta. 771+43 to Sta. 771+93 & Sta. 772+03 to Sta. 772+53)  
(Sta. 780+60 to Sta. 781+10 & Sta. 781+20 to Sta. 781+70)  
(Sta. 814+70 to Sta. 815+20 & Sta. 815+30 to Sta. 815+80)



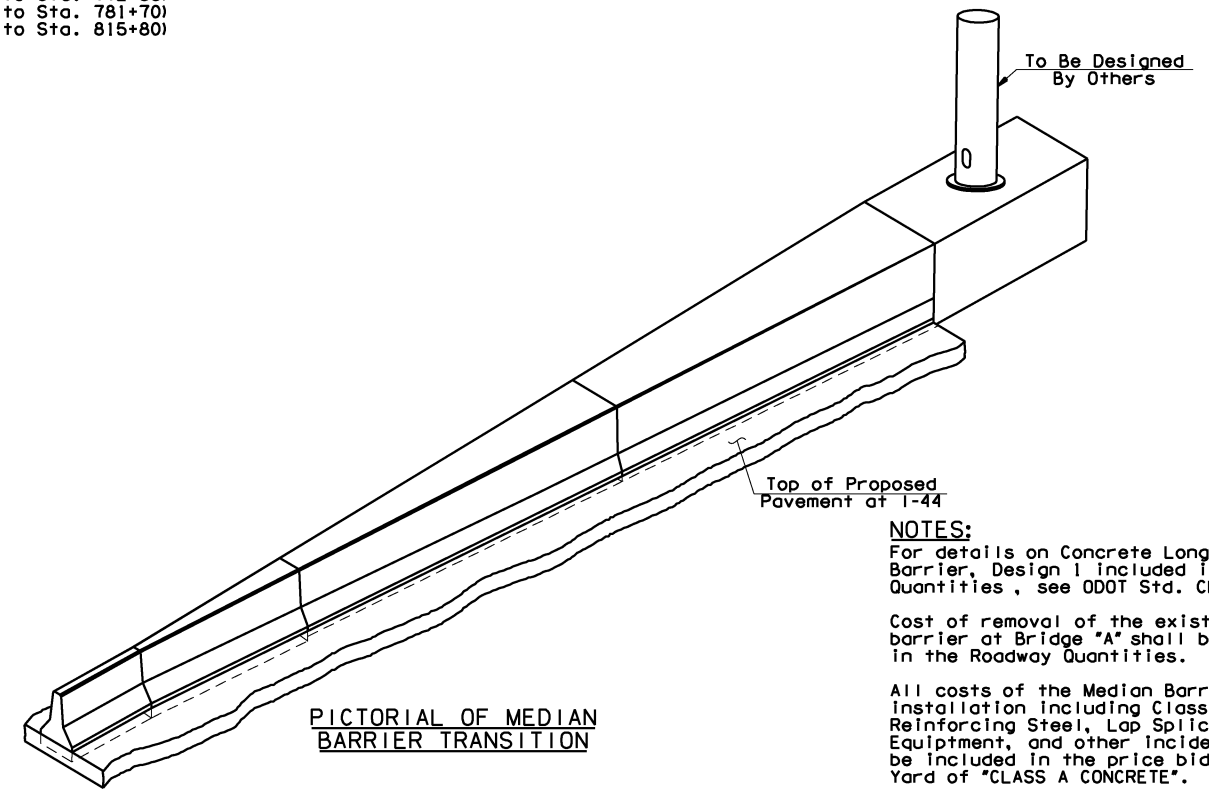
- ① Varies from 4 1/8" to 3 3/8"
- ② Varies from 3 3/8" to 2 11/16"
- ③ Varies from 9" to 1'-7 3/8"
- ④ Varies from 3 3/8" to 1 5/16"
- ⑤ Varies from 2 11/16" to 1 3/8"
- ⑥ Varies from 1'-7 3/8" to 3'-3 3/8"
- ⑦ Varies from 1 5/16" to 0"
- ⑧ Varies from 1 3/8" to 0"
- ⑨ Varies from 3'-3 3/8" to 5'-0"

**NOTES:**  
**CONSTRUCTION JOINTS:**  
Place Construction Joints at the locations shown. Place 1/4" thick preformed expansion material in the Construction Joint in accordance with the details shown. Do not place Longitudinal Reinforcement through a Construction Joint.

**CRACK CONTROL JOINTS:**  
Provide double 3/4" chamfers or 3/4" deep sawcut in accordance with the details shown. Place Crack Control Joints at the locations shown.

**REINFORCING STEEL:**  
Provide 3'-7" Lap Splices for Longitudinal #5 Bars where required. All construction and material shall be in accordance with the Standard Specifications.

SUMMARY OF QUANTITIES - MEDIAN BARRIER TRANSITION		
ITEM	UNIT	TOTAL
CLASS A CONCRETE	C.Y.	45.70
REINFORCING STEEL	LB.	2,324.00



⑩ Monotube Structure, Pedestal and Foundation. See "Summary of Pay Quantities and Notes (Traffic)" For Additional Information.

**NOTES:**  
For details on Concrete Longitudinal Barrier, Design 1 included in Roadway Quantities, see ODOT Std. CLB-1-2.  
Cost of removal of the existing median barrier at Bridge "A" shall be included in the Roadway Quantities.  
All costs of the Median Barrier Transition Installation including Class A Concrete, Reinforcing Steel, Lap Splices, Labor, Equipment, and other Incidentals shall be included in the price bid per Cubic Yard of "CLASS A CONCRETE".

145TH OVER I-44 BRIDGE "A"	TULSA & ROGERS COUNTIES	DESIGN	MJY	2/14
MEDIAN BARRIER TRANSITION DETAILS		DETAIL	JMO	2/14
		CHECK	MJY	2/15
<b>GARVER</b>				
STATE OF OKLAHOMA		DEPARTMENT OF TRANSPORTATION		
		JOB PIECE NO. 21899(04)	SHEET NO. 11A	