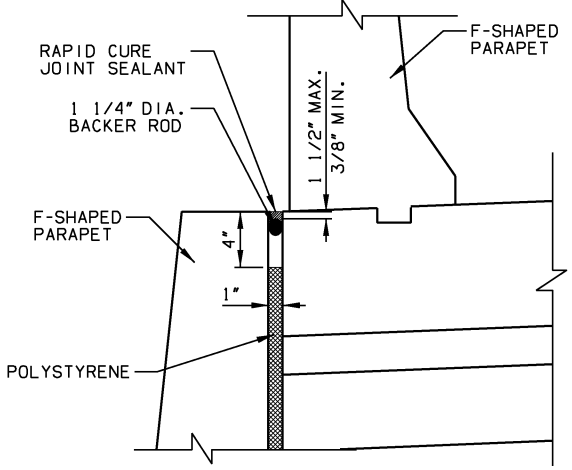
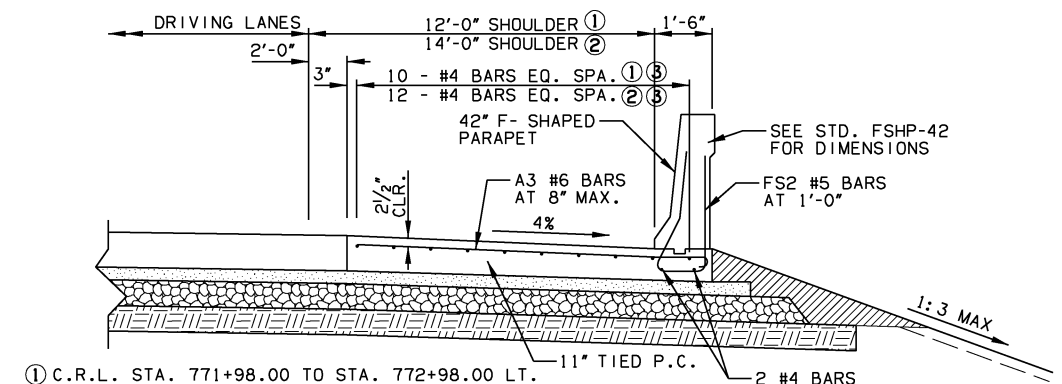


F-SHAPED PARAPET AT I-44 LT. SHOULDER AND SKELLY DR. RT. SHOULDER
 NOT TO SCALE
 C.R.L. SKELLY DR. STA. 24+70.87 TO STA. 41+44.55

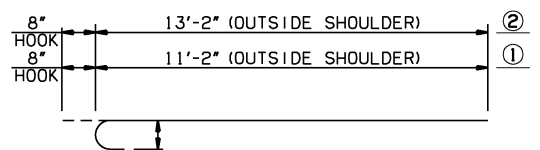


BARRIER JOINT DETAIL
 NOT TO SCALE

- ① CONSTRUCT F-SHAPED PARAPET. SEE DETAIL THIS SHEET FOR REINFORCEMENT DETAILS.
- ② SEE BARRIER JOINT DETAIL THIS SHEET.

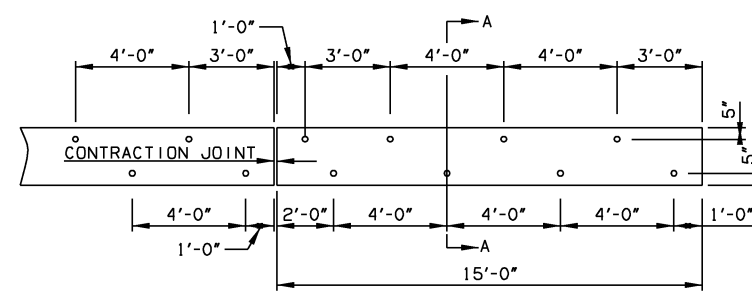


- ① C.R.L. STA. 771+98.00 TO STA. 772+98.00 LT.
 C.R.L. STA. 772+35.13 TO STA. 775+00.00 RT.
 C.R.L. STA. 778+95.00 TO STA. 779+95.00 RT.
 C.R.L. STA. 802+85.00 TO STA. 803.85.00 RT.
 C.R.L. STA. 791+00.00 TO STA. 816+00.00 LT.
- ② RAMP BL STA. 762+61.87 TO STA. 768+72.92
 RAMP BL STA. 768+72.92 TO STA. 772+35.13
- ③ TOP ONLY (OUTSIDE SHOULDER)

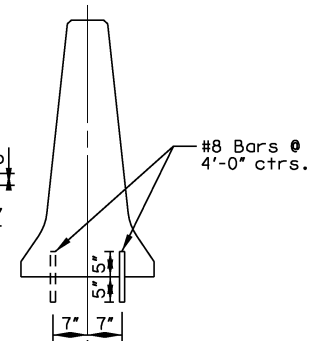


- ① A3 #6 x 11'-10" (OUTSIDE SHOULDER)
- ② A3 #6 x 13'-10" (OUTSIDE SHOULDER)

PARAPET SHOULDER REINFORCEMENT DETAIL
 NOT TO SCALE



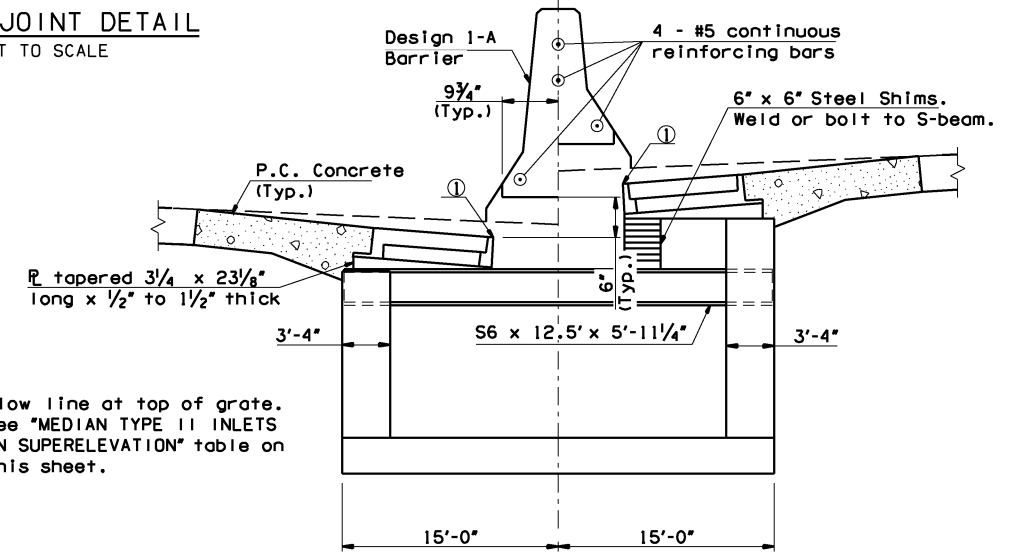
DOWEL PLACEMENT DETAIL



SECTION A-A

NOTE:
 COST OF MATERIAL AND INCIDENTALS REQUIRED FOR DETAIL TO BE INCLUDED FOR PRICE BID FOR "CONCRETE LONGITUDINAL BARRIER, DESIGN 1."

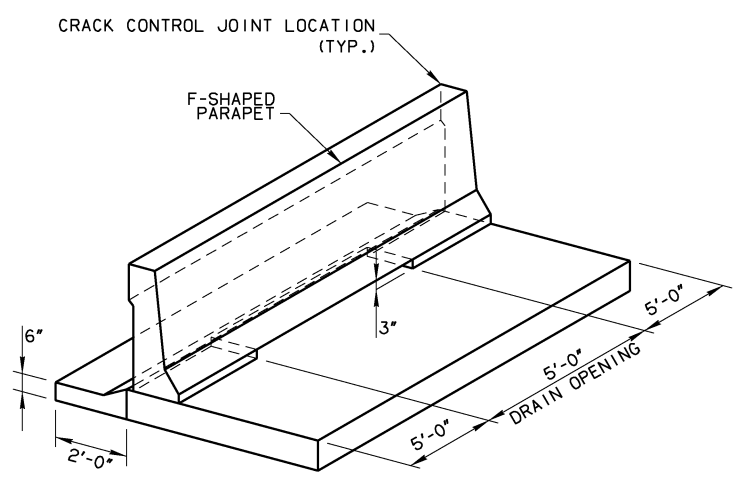
BARRIER DOWELING DETAIL
 N.T.S.
 C.R.L. STA. 750+00.00 TO STA. 753+20.00



SPECIAL GRATED INLET AT MEDIAN BARRIER DESIGN 1-A
 (For additional details, see Std. R-59)

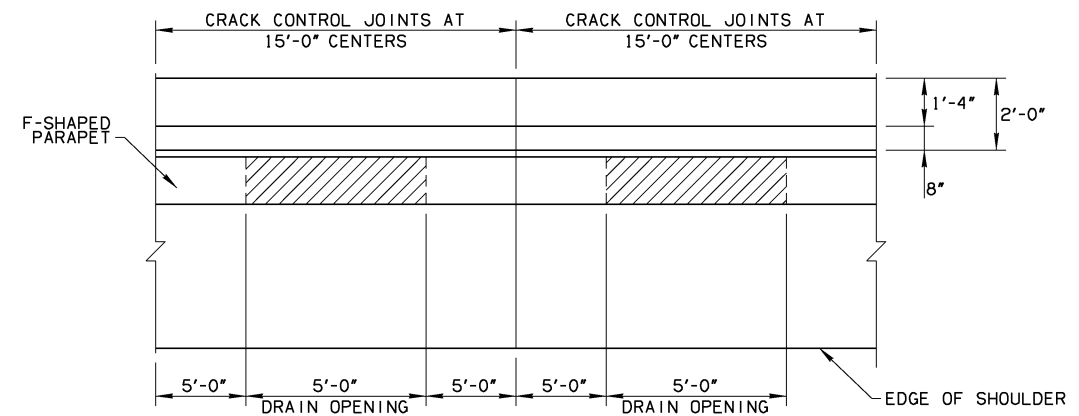
| STRUCTURE NO. | TOP OF GRATE ELEVATION | | DIFFERENCE |
|---------------|------------------------|--------|------------|
| | LEFT | RIGHT | |
| 100 | 703.44 | 703.81 | 0.37 |
| 102 | 702.23 | 702.97 | 0.74 |
| 104 | 700.79 | 701.47 | 0.68 |
| 106 | 699.36 | 699.97 | 0.61 |
| 108 | 697.79 | 698.29 | 0.50 |

① Flow line at top of grate. See "MEDIAN TYPE II INLETS IN SUPERELEVATION" table on this sheet.



PARAPET DRAINAGE OPENINGS CONSTRUCTION DETAIL

F-SHAPED OR SLOPED FACE PARAPET WITH DRAIN OPENINGS



PARAPET DRAINAGE OPENINGS PLAN

NOTES:
 DRAIN OPENINGS: PLACE A SERIES OF 5'-0" DRAIN OPENINGS IN THE BARRIER LOCATIONS SHOWN IN THE PLANS OR AS DIRECTED BY THE ENGINEER. CONSTRUCT THE DRAIN OPENINGS SUCH THAT THEY ARE 5'-0" IN LENGTH AND ALTERNATING WITH 10'-0" SOLID PARAPET LENGTHS.
 SEE "SUMMARY OF BARRIER QUANTITIES" TABLE ON SHEET NO. 22 FOR STA. RANGES.

- PAID AS "PC CONCRETE PAVEMENT (PLACEMENT)" S.Y. AND "PC CONCRETE FOR PAVEMENT" C.Y. QUANTITIES ARE SHOWN IN SURFACING QUANTITIES.
- PAID AS "EPOXY COATED REINFORCING STEEL". QUANTITIES ARE SHOWN IN SURFACING SUMMARY CHART.

PARAPET AT DRAINAGE OPENINGS REINFORCING DETAILS

| | | | |
|----------|---------------|-------------------------|-------------------------|
| DESIGN | DLT | 8/12 | TULSA & ROGERS COUNTIES |
| DRAWN | TML | 8/12 | |
| CHECKED | KMM | 6/16 | |
| APPROVED | | | |
| SQUAD | GARVER | STATE JOB NO. 21899(04) | SHEET NO. 11 |

ROADWAY DETAILS