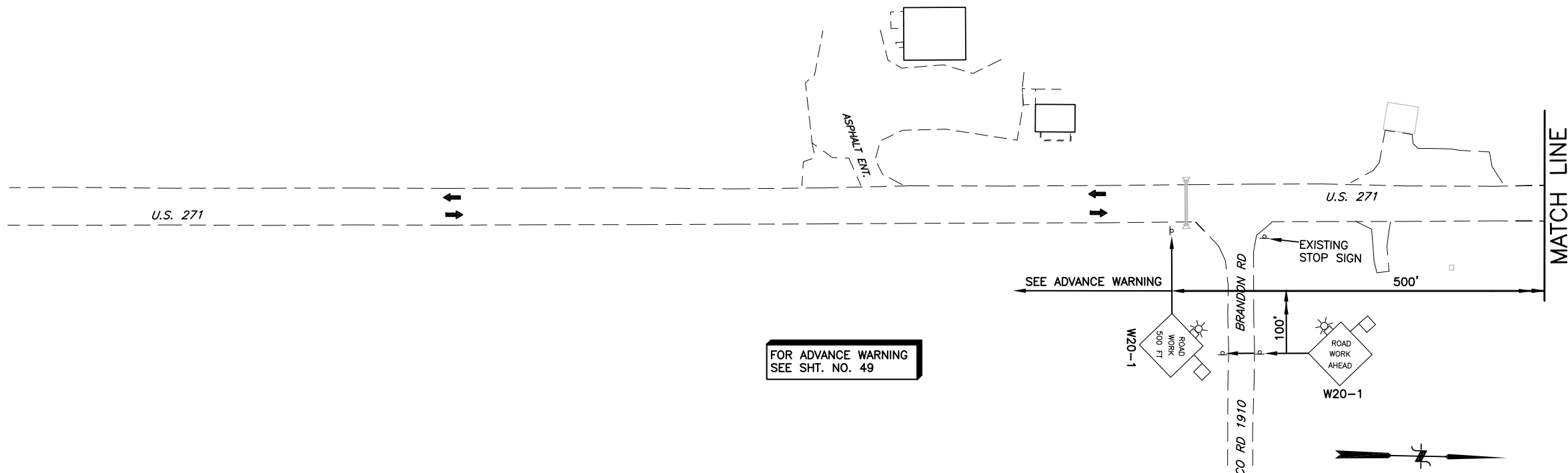
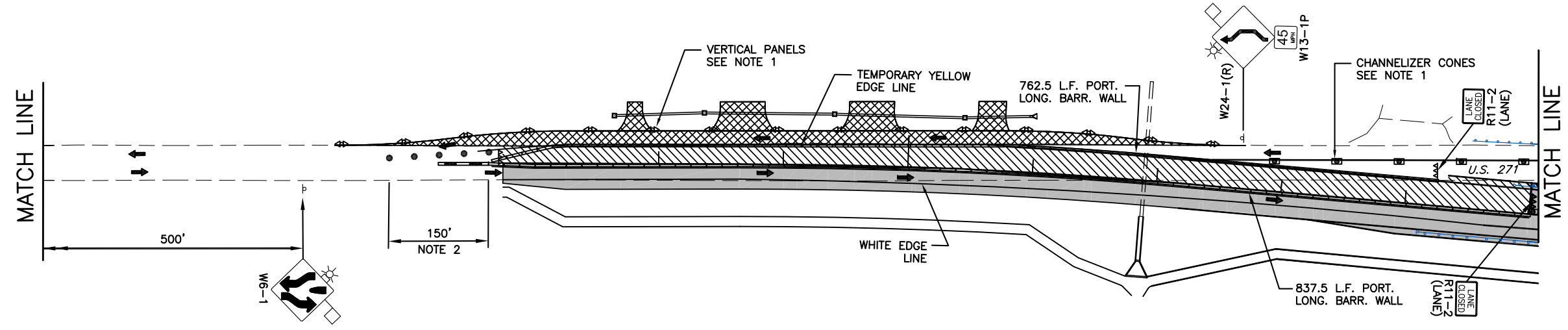


OKLAHOMA DEPARTMENT OF TRANSPORTATION						
FED. ROAD DIST. NO.	STATE	JOB PIECE NO.	FISCAL YEAR	SHEET NO.	TOTAL SHEETS	
6	OKLA.					
DESCRIPTION		REVISIONS		DATE		



PHASE 2C

- SHIFT N.B. LANE TO NEW U.S. 271.
- CONSTRUCT S.B. LANE ON SOUTH END OF PROJECT.
- CONSTRUCT S.B. SHOULDER ON NORTH END OF PROJECT.



NOTE 1
 MAXIMUM SPACING BETWEEN CHANNELIZING DEVICES (FEET) SHALL BE EQUAL TO TWICE THE POSTED SPEED LIMIT (M.P.H.) WITH THE FOLLOWING EXCEPTIONS: SPACING SHALL NOT EXCEED 50 FEET FOR CONES OR TUBE CHANNELIZERS, SPACING SHALL NOT EXCEED 75 FEET FOR TUBE CHANNELIZERS, AND IT SHALL NOT EXCEED 100 FEET FOR TYPE II BARRICADES, VERTICAL PANELS OR DRUMS.

NOTE 2
 A MINIMUM OF FIVE (5) CHANNELIZING DEVICES SHALL BE PLACED THROUGH THIS TAPER.

LEGEND

SIGN	WORK AREA
DRUM	DETOUR PAVING
CHANNELIZER CONE	PREVIOUS PAVING
TYPE III BARRICADE	VERTICAL PANELS
PORTABLE LONGITUDINAL BARRIER	C.Z. IMPACT ATTENUATOR

NOT TO SCALE

DESIGN		OKLAHOMA DEPARTMENT OF TRANSPORTATION POE & ASSOCIATES
DRAWN		
CHECKED		
APPROVED		
SQUAD		

SUGGESTED WORK TRAFFIC CONTROL

STATE JOB NO. 26346(04) SHEET NO. 61
 SH-271 OVER KIAMICHI RIVER PUSHMATAHA COUNTY

2014-03-18 HA_202957 US-271\ACAD\202957\TC02c - TC02c (3).dwg

PHASE 2C