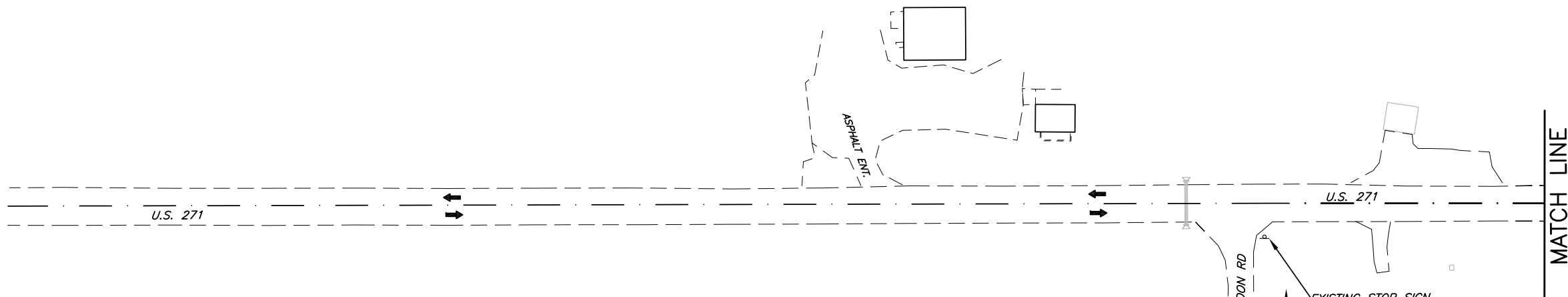
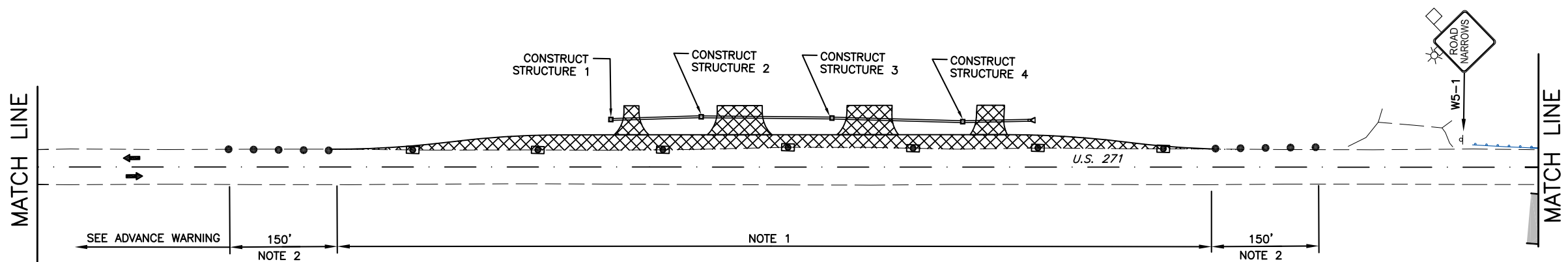


FED. ROAD DIST. NO.	STATE	JOB PIECE NO.	FISCAL YEAR	SHEET NO.	TOTAL SHEETS
6	OKLA.				
DESCRIPTION		REVISIONS		DATE	



PHASE 2A
 • CONSTRUCT TEMPORARY DETOUR PAVING ON NORTH & SOUTH ENDS OF PROJECT.

FOR ADVANCE WARNING
 SEE SHT. NO. 49



NOTE 1
 MAXIMUM SPACING BETWEEN CHANNELIZING DEVICES (FEET) SHALL BE EQUAL TO THE POSTED SPEED LIMIT (M.P.H.) WITH THE FOLLOWING EXCEPTIONS. SPACING SHALL NOT EXCEED 25 FEET FOR CONES OR TUBE CHANNELIZERS; IT SHALL NOT EXCEED 50 FEET FOR TYPE III BARRICADES, VERTICAL PANELS OR DRUMS.

NOTE 2
 A MINIMUM OF FIVE (5) CHANNELIZING DEVICES SHALL BE PLACED THRU THIS AREA.

LEGEND

- SIGN
- DRUM
- PREVIOUS PAVING
- ▨ WORK AREA
- ▩ DETOUR PAVING
- CHANNELIZER CONE

NOT TO SCALE

PHASE 2A

DESIGN	
DRAWN	
CHECKED	
APPROVED	
SQUAD	DE

OKLAHOMA DEPARTMENT OF TRANSPORTATION
 POE & ASSOCIATES

**SUGGESTED CONSTRUCTION
 TRAFFIC CONTROL**

STATE JOB NO. 26346(04) SHEET NO. 55

SH-271 OVER KIAMICHI RIVER PUSHMATAHA COUNTY