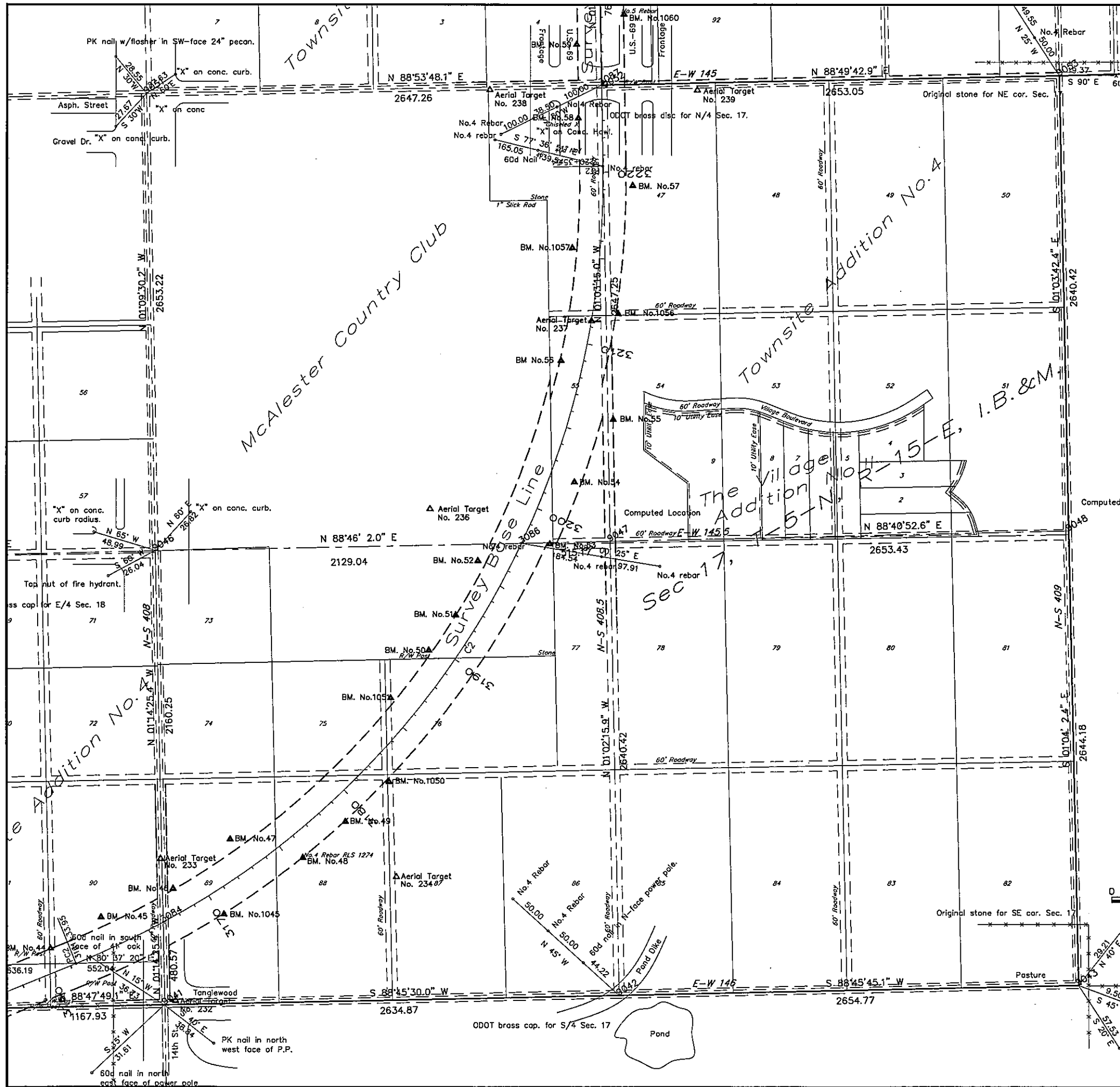


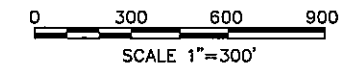
S:\Projects\DOT\DOTUS 89 Comanche\Acad\GACAD PROJECT 1\SR007-SEC17-5N-15E.dwg, 7/14/2016 11:07:21 AM



S017		SECTION 17		
9053	S 01-03'42.4" E	N 582488.1821	E 2647070.0297	NE Cor
9048	S 01-04'02.4" E	N 579848.2116	E 2647118.9577	E 1/4 Cor
9043	S 88-45'45.1" W	N 2654.775	E 2647168.2119	SE Cor
9042	S 88-45'30.0" W	N 577147.1557	E 2644514.0561	S 1/4 Cor
9041	N 01-14'25.4" W	N 480.569	E 2641879.8068	SW Cor
3084	N 01-14'25.4" W	N 577570.5150	E 2641869.4039	SBL
9046	N 01-09'30.2" W	N 579730.2579	E 2641822.6409	W 1/4 Cor
9051	N 88-53'48.1" E	N 582382.9360	E 2641769.0025	NW Cor
3087	N 88-53'48.1" E	N 582433.9095	E 2644415.7686	SBL
9052	N 88-49'42.9" E	N 582433.9434	E 2644417.5307	N 1/4 Cor
9053	N 88-49'42.9" E	N 582488.1821	E 2647070.0297	NE Cor
S117		SECTION 17		
9046	N 88-46'02.0" E	N 579730.2579	E 2641822.6409	W 1/4 Cor
3086	N 88-46'02.0" E	N 579776.0627	E 2643951.1871	SBL
9047	N 88-40'52.6" E	N 579787.1462	E 2644466.2344	Center
9048	N 88-40'52.6" E	N 579848.2116	E 2647118.9577	E 1/4 Cor
S217		SECTION 17		
9042	N 01-02'15.9" W	N 577147.1557	E 2644514.0561	S 1/4 Cor
9047	N 01-03'15.0" W	N 579787.1462	E 2644466.2344	Center
9052	N 01-03'15.0" W	N 582433.9434	E 2644417.5307	N 1/4 Cor

SURVEY CONTROL DATA

- HORIZONTAL CONTROL**
 1. Horizontal control for this survey is the NGS Oklahoma State Plane Coordinate System NAD 83(1993), Lambert Projection (South Zone).
 2. Accuracy - Third Order/Class 1 or better.
- BEARINGS**
 The bearings shown are grid bearings derived from the NGS Oklahoma State Plane Coordinate System and are not Astronomical. The angle of variance between grid north (GN) and the astronomical true north (TN) is depicted diagrammatically.
- VERTICAL CONTROL**
 1. Level datum is Mean Sea Level (NGS), NAVD 1988.
 2. Accuracy - Third Order or better.



Survey	CKS	OKLAHOMA DEPARTMENT OF TRANSPORTATION SURVEY DIVISION U.S. HIGHWAY 69 - MCALESTER SURVEY DATA SHEET SECTION 17, T-5-N, R-15-E, I.B.&M. SWO 375i(1) Job Piece No. 14999(04) Sheet No. 57
Drawn	CKD	
Checked	RDS	
Approved		
Plotted	7/14/16	