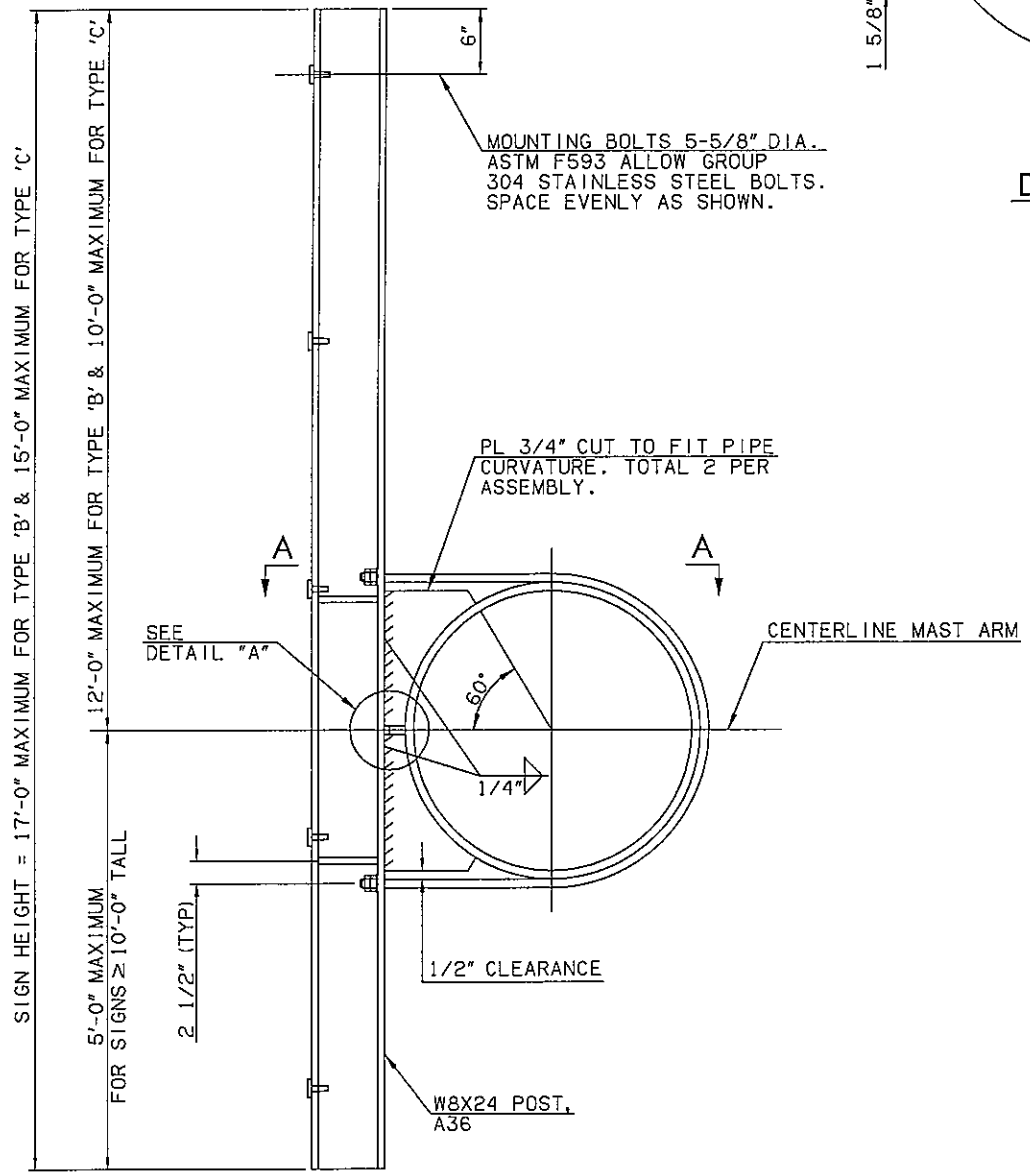
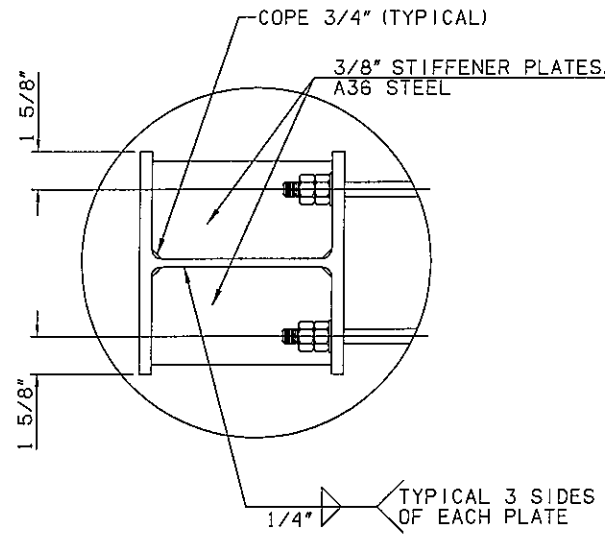


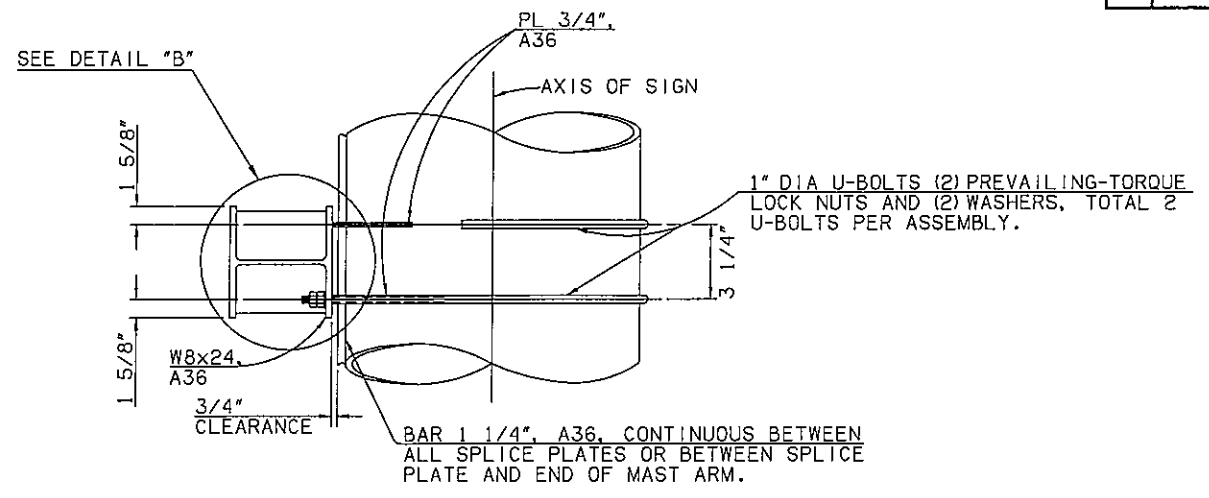
| REV. NO. | DESCRIPTION | REVISIONS | DATE |
|----------|-------------|-----------|------|
| | | | |



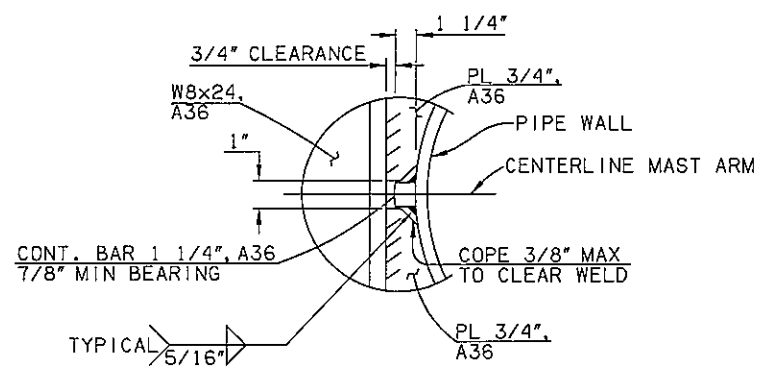
SIGN MOUNTING BRACKET



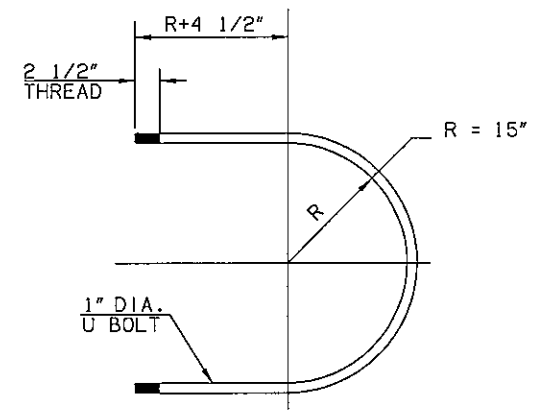
DETAIL 'B'



VIEW A-A



DETAIL 'A'



U BOLT DETAIL

GENERAL NOTES

1. ALL U-BOLTS SHALL CONFORM TO THE MATERIAL SPECIFICATIONS OF ASTM A193-B7, AND THREADS SHALL CONFORM TO ASTM A325 SECTION 7.2. ALL U-BOLT NUTS SHALL BE PREVAILING-TORQUE LOCK NUTS AND SHALL CONFORM TO THE SPECIFICATION OF ASTM A194-2H. ALL WASHERS SHALL CONFORM TO THE SPECIFICATIONS OF ASTM F436.

| | | | |
|--|----------------|-------------------------------------|----|
| MONOTUBE STRUCTURE (OVERHEAD SIGN BRACKET DETAIL) | Design | JG | JW |
| | Detail | JG | JW |
| | Check | JG | JW |
| | Squad Engr. | SUPERVISOR ENGINEER | |
| STATE OF OKLAHOMA | | DEPARTMENT OF TRANSPORTATION | |
| JOB PERM. NO. 14999(04) | | SHEET NO. M4 | |