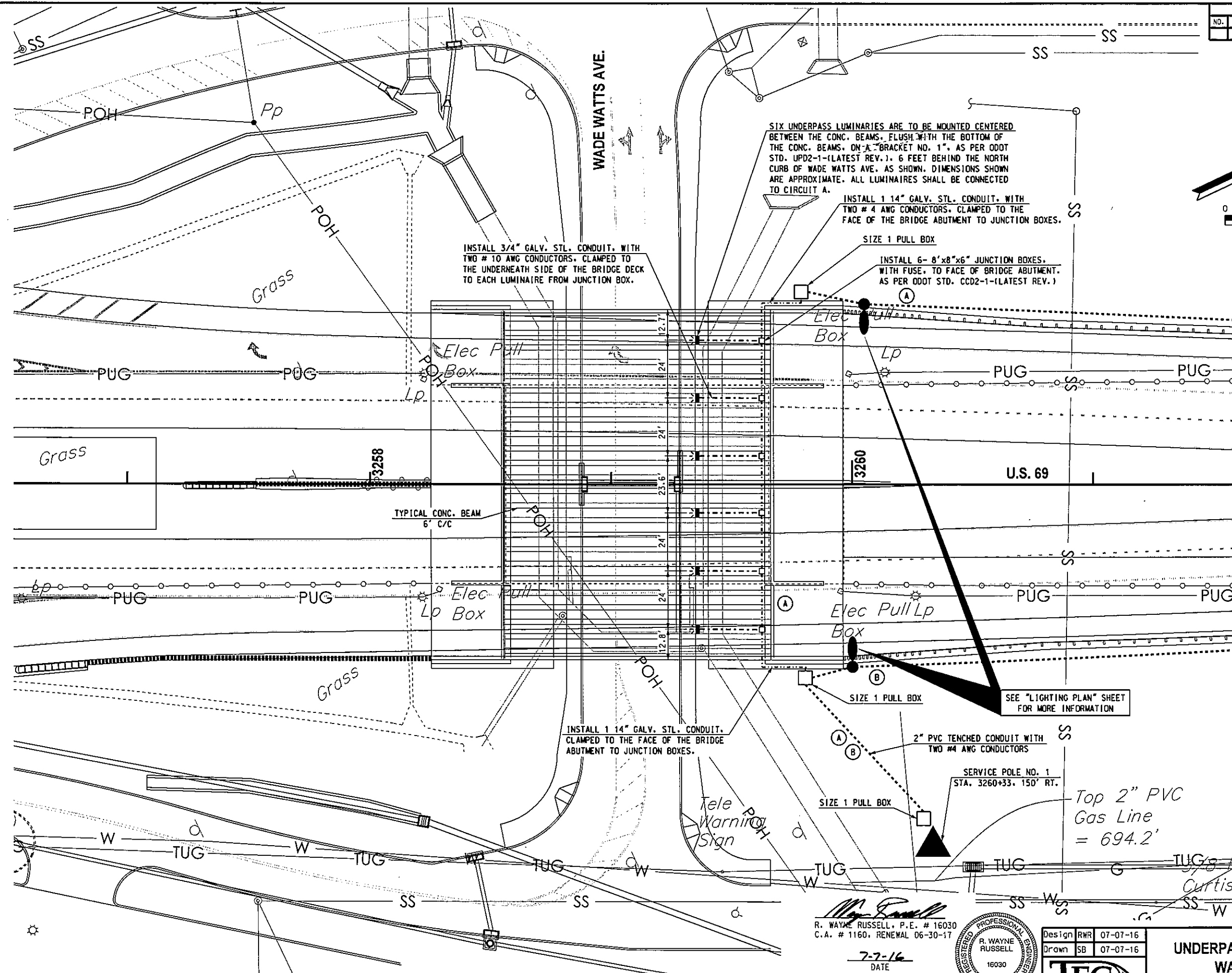


REVISIONS		
NO.	DESCRIPTION	DATE



SIX UNDERPASS LUMINARIES ARE TO BE MOUNTED CENTERED BETWEEN THE CONC. BEAMS, FLUSH WITH THE BOTTOM OF THE CONC. BEAMS, ON A BRACKET NO. 1", AS PER ODOT STD. UPD2-1-(LATEST REV.), 6 FEET BEHIND THE NORTH CURB OF WADE WATTS AVE. AS SHOWN. DIMENSIONS SHOWN ARE APPROXIMATE. ALL LUMINAIRES SHALL BE CONNECTED TO CIRCUIT A.

INSTALL 3/4" GALV. STL. CONDUIT, WITH TWO # 10 AWG CONDUCTORS, CLAMPED TO THE UNDERNEATH SIDE OF THE BRIDGE DECK TO EACH LUMINAIRE FROM JUNCTION BOX.

INSTALL 1 1/4" GALV. STL. CONDUIT, WITH TWO # 4 AWG CONDUCTORS, CLAMPED TO THE FACE OF THE BRIDGE ABUTMENT TO JUNCTION BOXES.

SIZE 1 PULL BOX

INSTALL 6- 8"x8"x6" JUNCTION BOXES, WITH FUSE, TO FACE OF BRIDGE ABUTMENT, AS PER ODOT STD. CC02-1-(LATEST REV.)

TYPICAL CONC. BEAM  
6' C/C

INSTALL 1 1/4" GALV. STL. CONDUIT, CLAMPED TO THE FACE OF THE BRIDGE ABUTMENT TO JUNCTION BOXES.

SIZE 1 PULL BOX

SEE "LIGHTING PLAN" SHEET FOR MORE INFORMATION

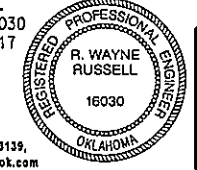
2" PVC TENCHED CONDUIT WITH TWO #4 AWG CONDUCTORS

SERVICE POLE NO. 1  
STA. 3260+33.150 RT.

Top 2" PVC Gas Line = 694.2'

R. WAYNE RUSSELL, P.E. # 16030  
C.A. # 1160, RENEWAL 06-30-17

7-7-16  
DATE



Design RWR 07-07-16  
Drawn SB 07-07-16



UNDERPASS LUMINAIRE DETAIL  
WADE WATTS AVE.

State Job No. 14999(04)

Sheet No. L3

PITTSBURG COUNTY

07-07-16 C:\Projects\17-2462A US 69 Interch @ Mirhead Rd Traffic Control & Lighting\CAD\MP LIGHTING.dgn