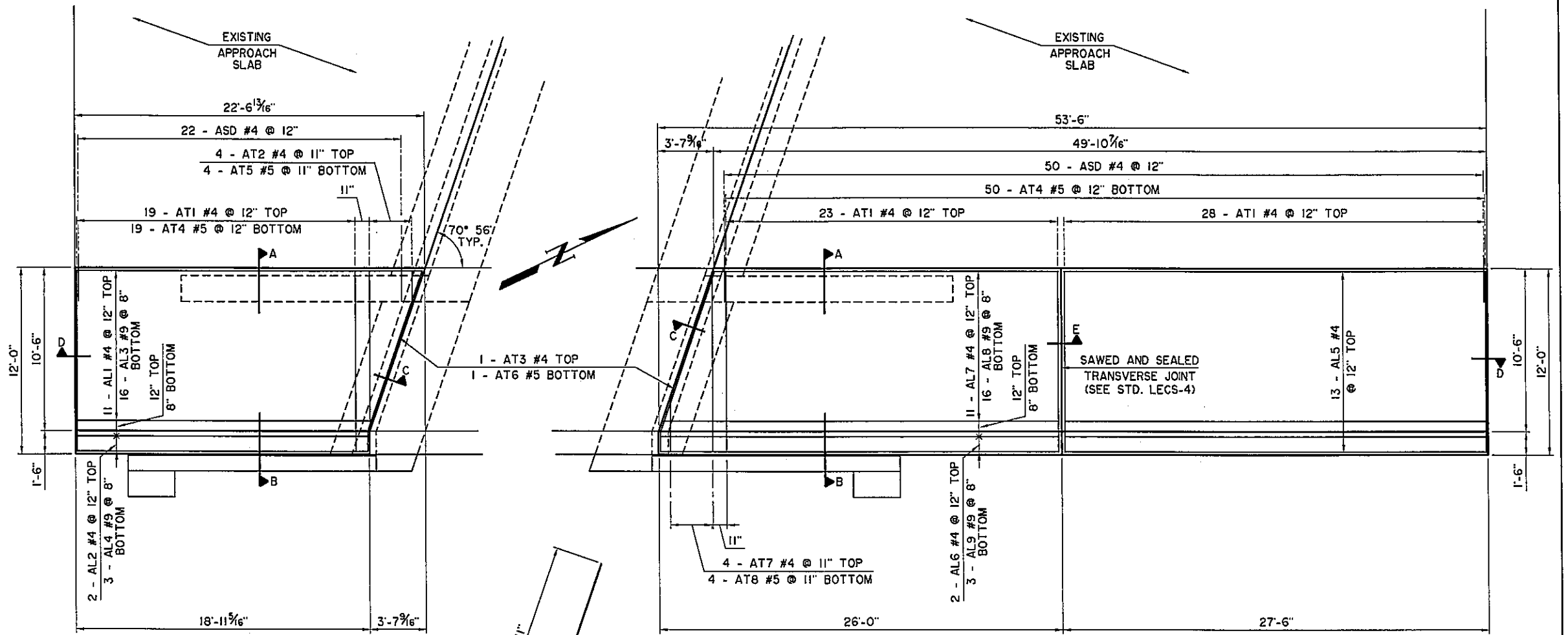


APPROACH SLAB NO. 1 BAR LIST					
MARK	SIZE	NO.	FORM	LENGTH	LENGTH VARIATION
EPOXY COATED REINFORCING BARS					
AL1	#4	11	STR.	20'-8" AVG.	19'-0" TO 22'-4"
AL2	#4	2	STR.	18'-9"	
AL3	#9	16	STR.	20'-8" AVG.	19'-0" TO 22'-4"
ASD	#4	22	STR.	3'-0"	
AT1	#4	19	STR.	11'-8"	
AT2	#4	4	STR.	5'-9" AVG.	1'-9" TO 9'-9"
AT3	#4	1	BNT.	12'-3"	
AT4	#5	19	STR.	11'-8"	
AT5	#5	4	STR.	5'-9" AVG.	1'-9" TO 9'-9"
AT6	#5	1	BNT.	12'-3"	
FS2	#5	17	BNT.	7'-4"	
FS6	#5	5	BNT.	7'-6 1/2"	

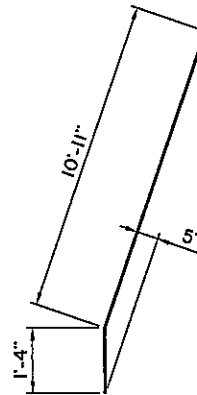
APPROACH SLAB NO. 2 BAR LIST					
MARK	SIZE	NO.	FORM	LENGTH	LENGTH VARIATION
EPOXY COATED REINFORCING BARS					
AL5	#4	13	STR.	27'-3"	
AL6	#4	2	STR.	25'-9"	
AL7	#4	11	STR.	23'-10" AVG.	22'-2" TO 25'-6"
AL8	#9	16	STR.	51'-5" AVG.	49'-9" TO 53'-1"
AL9	#9	3	STR.	53'-4"	
ASD	#4	50	STR.	3'-0"	
AT1	#4	51	STR.	11'-8"	
AT3	#4	1	BNT.	12'-3"	
AT4	#5	50	STR.	11'-8"	
AT6	#5	1	BNT.	12'-3"	
AT7	#4	4	STR.	7'-1" AVG.	3'-1" TO 11'-1"
AT8	#5	4	STR.	7'-1" AVG.	3'-1" TO 11'-1"
FS2	#5	51	BNT.	7'-4"	
FS6	#5	5	BNT.	7'-6 1/2"	

FOR BAR BEND, SEE STD. FSHP-42.

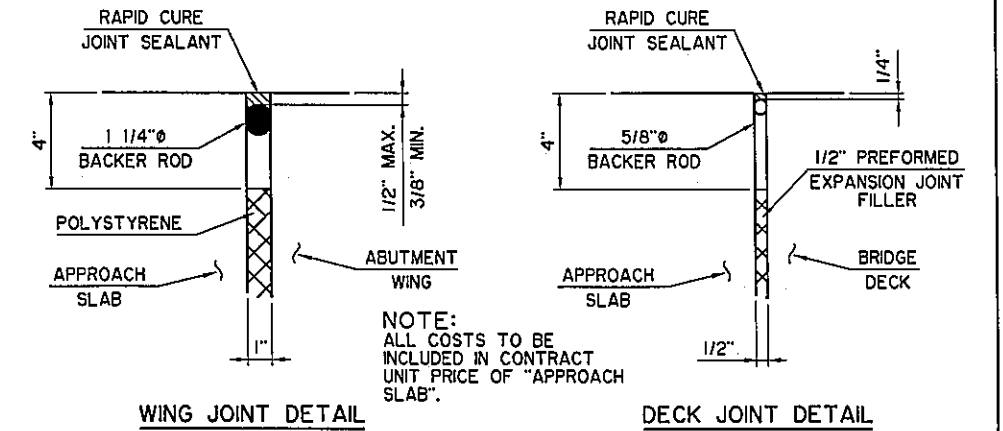


APPROACH SLAB NO. 1

APPROACH SLAB NO. 2



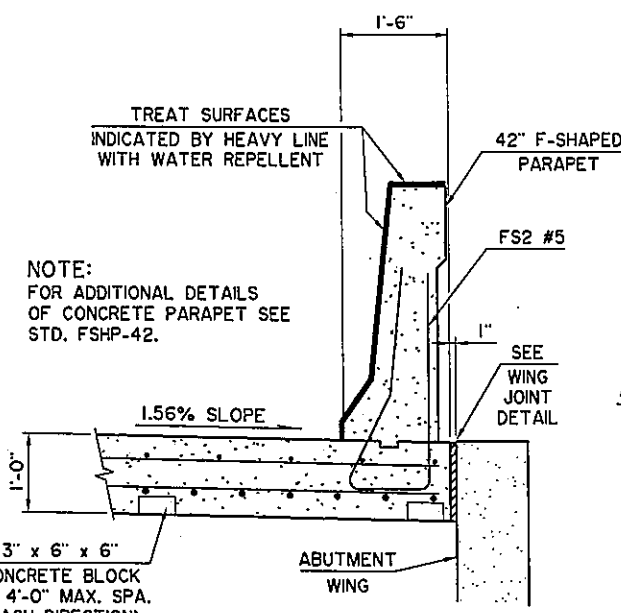
AT3 #4 x 12'-3"  
AT6 #5 x 12'-3"



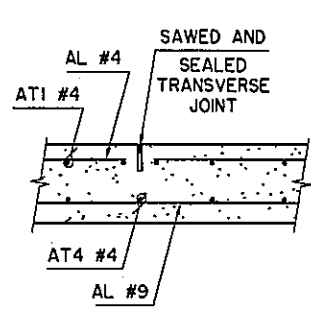
WING JOINT DETAIL

DECK JOINT DETAIL

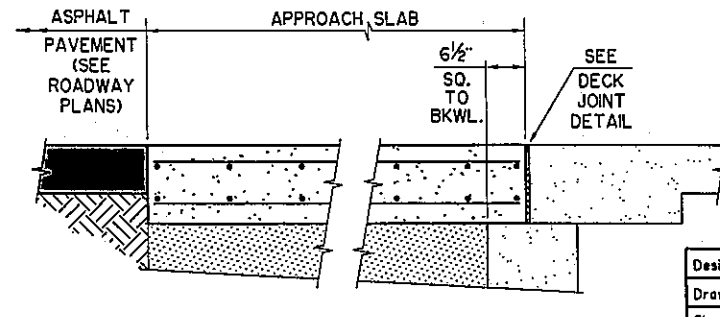
NOTE:  
PLACE REINFORCING IN THE TOP OF THE APPROACH SLAB 2" FROM EITHER SIDE OF THE SAWED AND SEALED TRANSVERSE JOINT. FOR ADDITIONAL DETAILS OF SAWED AND SEALED JOINT, SEE LONGITUDINAL JOINT ON STD. LECS-4.



SECTION B

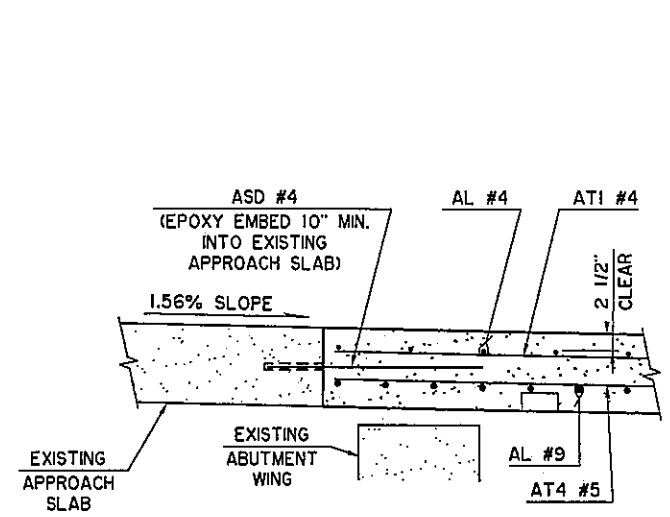


SECTION E



SECTION D

SECTION C



SECTION A

Design	TAC		<b>U.S. HIGHWAY 69 - McALESTER</b>	
Drawn	KGL	HEJ	<b>APPROACH SLAB DETAILS</b>	
Checked	ADT	SAS	AOK RAILROAD	
Approved	CEG		BRIDGE "S" NORTHBOUND	
Squad	WEA		JOB PIECE NO. 14999(04)	SHEET NO. B49

I:\Active\0403\RD\DWG\B49-ApSlab2.dwg, 7/6/2016 7:44:59 AM, Howard