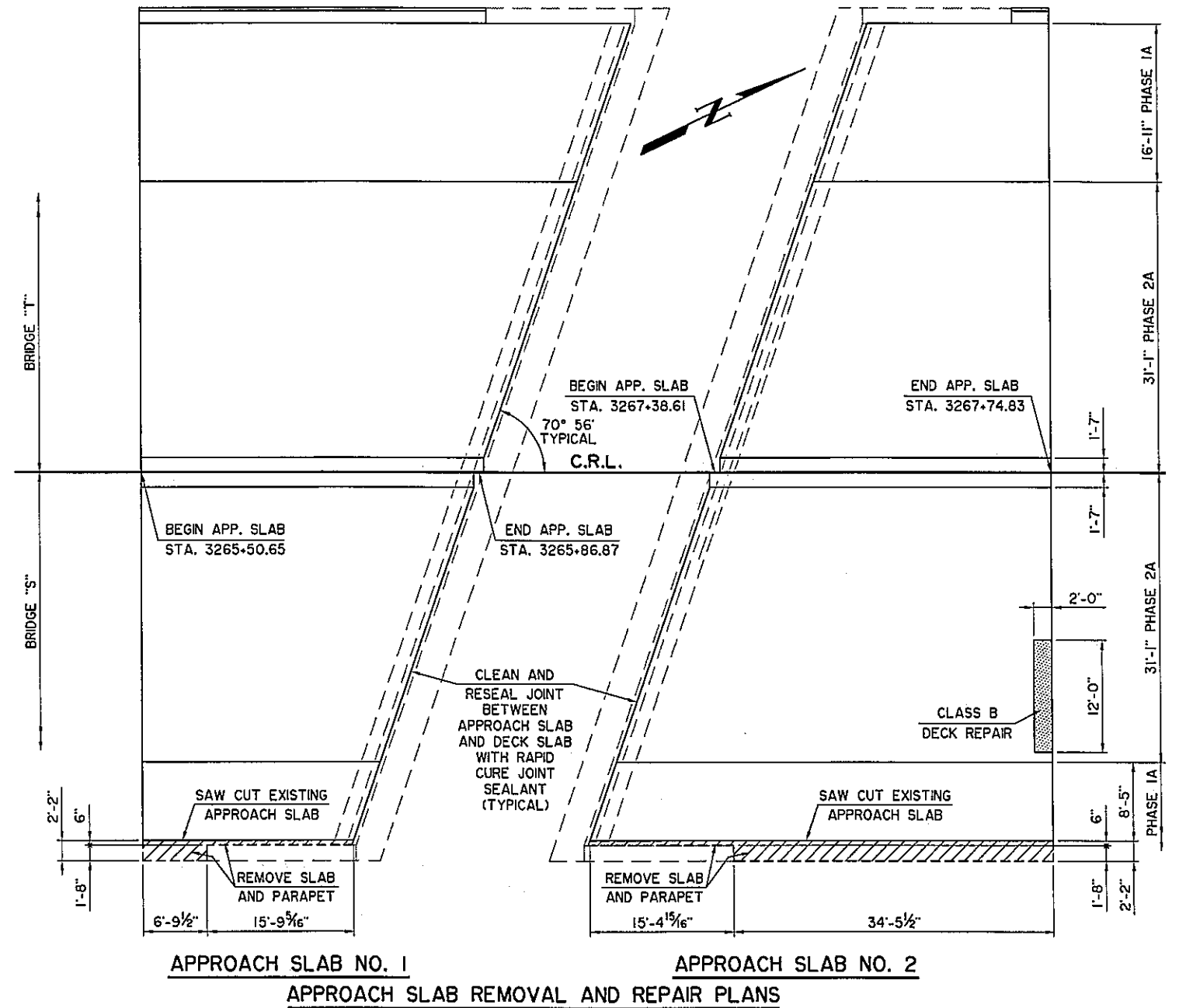


I:\Active\0403\RD RRA\DWG\B48-ApSlab1.DWG, 7/6/2016 7:44:35 AM, Howard



APPROACH SLAB QUANTITIES													
ITEM	UNIT	BRIDGE "S"						BRIDGE "T"					
		PHASE IA			PHASE 2A			PHASE IA			PHASE 2A		
		APP. SLAB NO. 1	APP. SLAB NO. 2	TOTAL	APP. SLAB NO. 1	APP. SLAB NO. 2	TOTAL	APP. SLAB NO. 1	APP. SLAB NO. 2	TOTAL	APP. SLAB NO. 1	APP. SLAB NO. 2	TOTAL
APPROACH SLAB	S.Y.	27.4	69.2	96.6									
SAW-CUT GROOVING	S.Y.	24.2	60.3	84.5									
42" F-SHAPED PARAPET	L.F.	18.9	53.5	72.4									
① RAPID CURE JOINT SEALANT	L.F.	8.9	8.9	17.8	32.7	32.7	65.4	17.9	17.9	35.8	32.7	32.7	65.4
CLASS B BRIDGE DECK REPAIR	S.Y.					2.7	2.7						
WATER REPELLENT (VISUALLY INSPECTED)	S.Y.	9	25	34									
DECK AREA SEALED (FLOODCOATS)	S.Y.	22.5	45.3	67.8	100.2	137.2	237.4	93.8	42.4	136.2	137.2	100.2	237.4
REMOVAL OF EXISTING SLAB	S.Y.	2.5	9.2	11.7									
REMOVAL OF EXISTING PARAPET	L.F.	6.8	34.5	41.3									

① JOINT AT EXISTING SLAB ONLY, JOINT AT NEW APPROACH SLAB IS INCLUDED IN CONTRACT UNIT PRICE FOR "APPROACH SLAB"

Design	TAC		U.S. HIGHWAY 69 - McALESTER APPROACH SLAB REMOVAL AND REPAIR AOK RAILROAD BRIDGE "S" NORTHBOUND, BRIDGE "T" SOUTHBOUND JOB PIECE NO. 14999(04) SHEET NO. B48
Drawn	KGL	HEJ	
Checked	ADT		
Approved	CEG		
Squad	WEA		