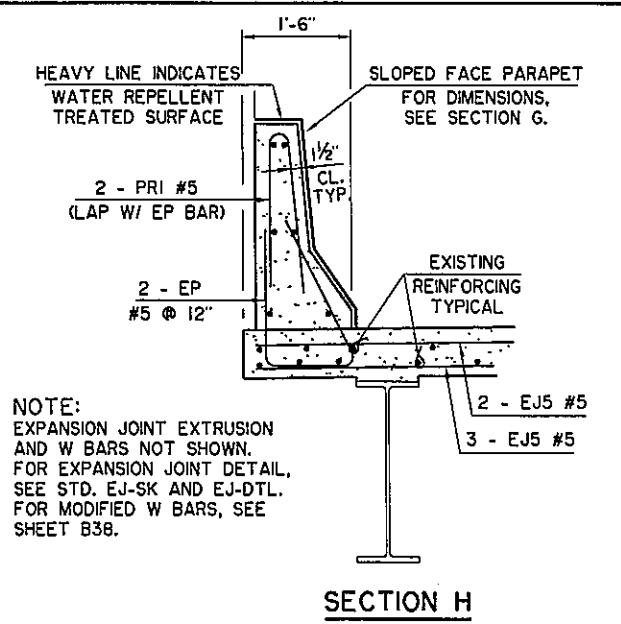


EXPANSION JOINT REHABILITATION PLAN AT PIERS

NOTE:
REPLACE ORIGINAL SHOES ON BEAMS 2, 3, 4, 5 AND 6 AT BOTH ABUTMENTS ON BRIDGE "S".
REPLACE ORIGINAL SHOES ON BEAMS 4, 5, 6, 7 AND 8 AT BOTH ABUTMENTS ON BRIDGE "T".
FOR NEW BEARING DETAILS, SEE SHEET B39.

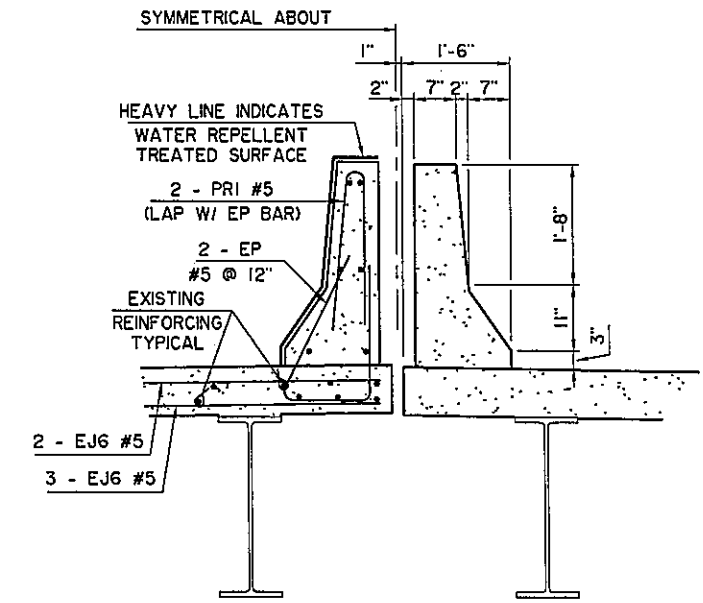
NOTE:
FOR BEAMS 7 THRU 11 IN PHASE IA, SEE SHEET B42.

① DO NOT SAWCUT THRU EXISTING REINFORCING. REMOVE CONCRETE WITH HAND TOOLS. CUT INDIVIDUAL REINFORCING BARS ONLY AS REQUIRED TO REMOVE EXISTING EXPANSION JOINT AND INSTALL NEW REINFORCING AND EXPANSION JOINT.

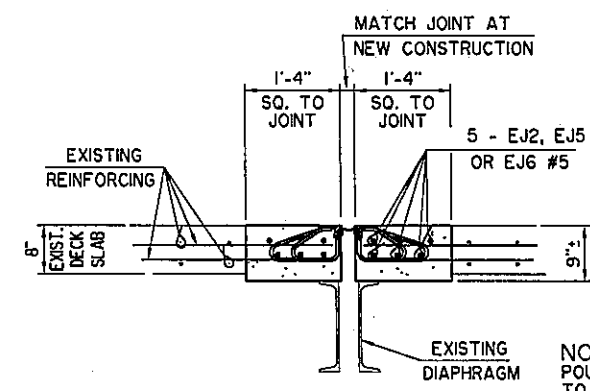


NOTE:
EXPANSION JOINT EXTRUSION AND W BARS NOT SHOWN. FOR EXPANSION JOINT DETAIL, SEE STD. EJ-SK AND EJ-DTL. FOR MODIFIED W BARS, SEE SHEET B38.

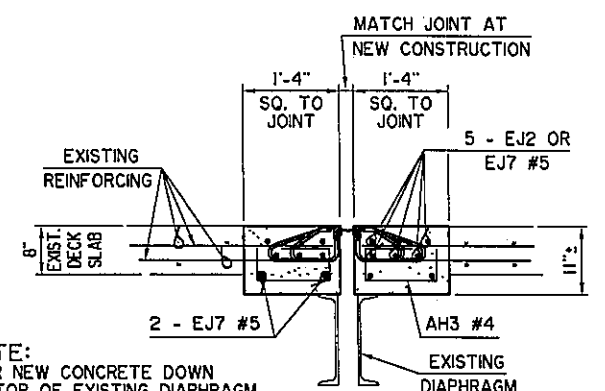
SECTION H



SECTION G



SECTION E



SECTION F

NOTE:
POUR NEW CONCRETE DOWN TO TOP OF EXISTING DIAPHRAGM THROUGHOUT EXPANSION JOINT REHABILITATION AREA.

Design	CEG	
Drawn	KGL	HEJ
Checked	ADT	
Approved	CEG	
Squad	WEA	

U.S. HIGHWAY 69 - McALESTER
EXPANSION JOINT REHABILITATION DETAILS
 AOK RAILROAD
 BRIDGE "S" NORTHBOUND, BRIDGE "T" SOUTHBOUND
 JOB PIECE NO. 14999(04) SHEET NO. B47

I:\Active\0403\DRR\DWG\B47-JR\Rehab.dwg, 7/6/2016 7:44:05 AM, Howard