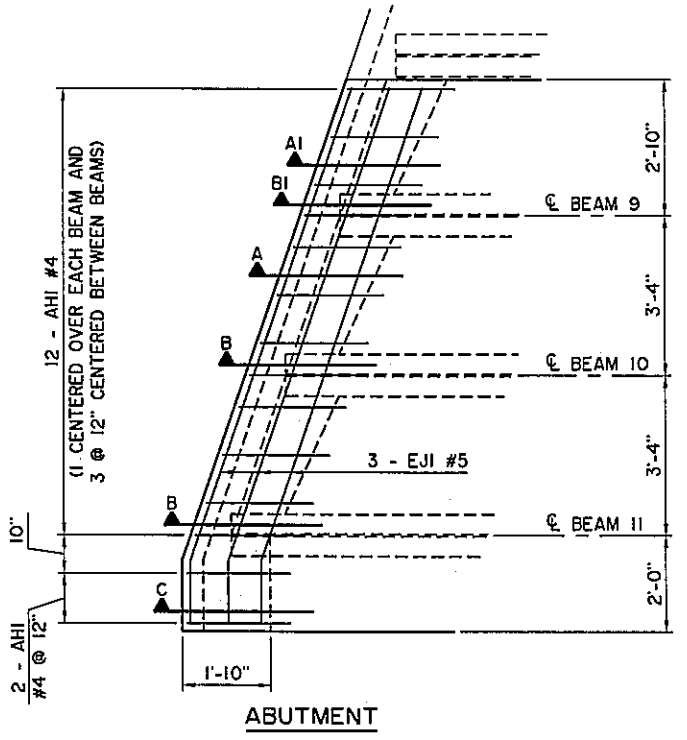
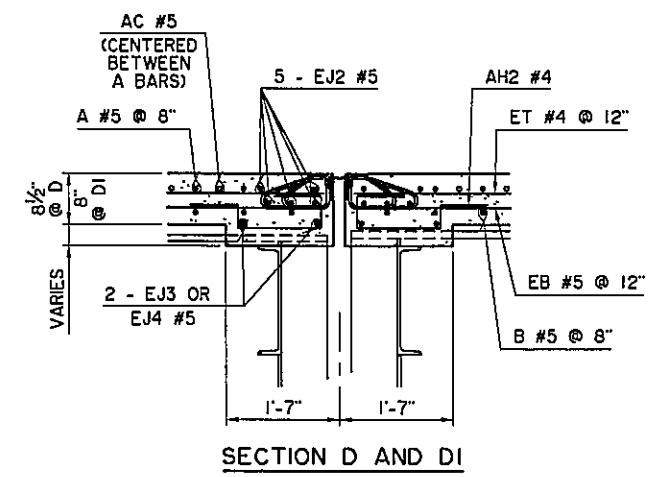
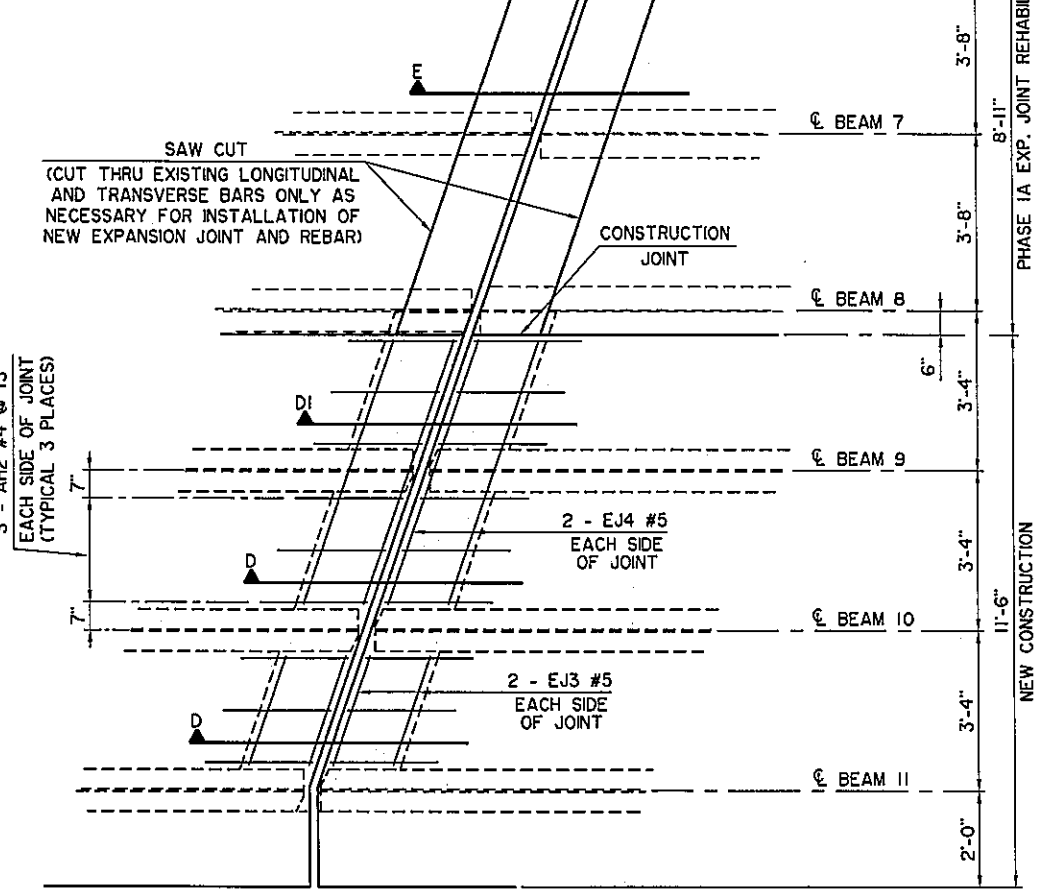


SUPERSTRUCTURE BAR LIST					
EPOXY COATED REINFORCING					
MARK	SIZE	NO.	FORM	LENGTH	VARIATION
BRIDGE "S", PHASE 1A					
②①	A1	#5	206	BNT.	11'-10"
②①	A2	#5	2	BNT.	9'-8" AVG. 8'-8" TO 10'-8"
③①	A3	#5	10	STR.	5'-2" AVG. 1'-4" TO 9'-0"
④①	A4	#5	4	STR.	9'-1" AVG. 8'-1" TO 10'-1"
	A5	#5	5	STR.	5'-8" AVG. 1'-10" TO 9'-6"
②①	AC1	#5	215	BNT.	5'-10"
②①	AC2	#5	5	BNT.	4'-9" AVG. 2'-10" TO 6'-8"
⑤②①	AC3	#5	8	BNT.	4'-9" AVG. 3'-4" TO 6'-2"
②	AH1	#4	28	BNT.	3'-8"
②	AH2	#4	36	BNT.	3'-7"
⑥	B1	#5	209	STR.	10'-0"
	B2	#5	5	STR.	6'-1" AVG. 2'-2" TO 10'-0"
⑦⑥	B3	#5	6	STR.	4'-7" AVG. 2'-8" TO 6'-6"
	B4	#5	2	STR.	2'-0"
	B5	#5	4	STR.	11'-3"
⑧	B6	#5	10	STR.	6'-0" AVG. 2'-0" TO 10'-0"
⑥	B7	#5	4	STR.	5'-4" AVG. 2'-5" TO 8'-3"
	EB1	#5	20	STR.	45'-7"
	EB2	#5	2	STR.	45'-9"
	EB3	#5	12	STR.	59'-8"
	EB4	#5	2	STR.	45'-5"
②	EJ1	#5	10	BNT.	11'-9"
⑨②	EJ2	#5	20	BNT.	21'-2"
	EJ3	#5	8	STR.	2'-5"
	EJ4	#5	8	STR.	5'-10"
	ET1	#4	20	STR.	45'-7"
	ET2	#4	2	STR.	45'-9"
	ET3	#4	12	STR.	59'-8"
	ET4	#4	2	STR.	45'-5"
⑩	FS2	#5	125	BNT.	7'-4"
⑩	L	#4	32	BNT.	1'-3"
BRIDGE "T", PHASE 1A					
②	EJ5	#5	20	BNT.	19'-1"
①	EP	#5	8	BNT.	5'-5"
②①①	PRI	#5	8	BNT.	5'-0"
BRIDGE "S" AND BRIDGE "T", PHASE 2A ONE SHOWN, TWO REQUIRED					
②	AH3	#4	92	BNT.	2'-10"
⑥②	EJ6	#5	20	BNT.	32'-7"
	EJ7	#5	8	STR.	25'-4"
①①	EP	#5	8	BNT.	5'-5"
②①①	PRI	#5	8	BNT.	5'-0"

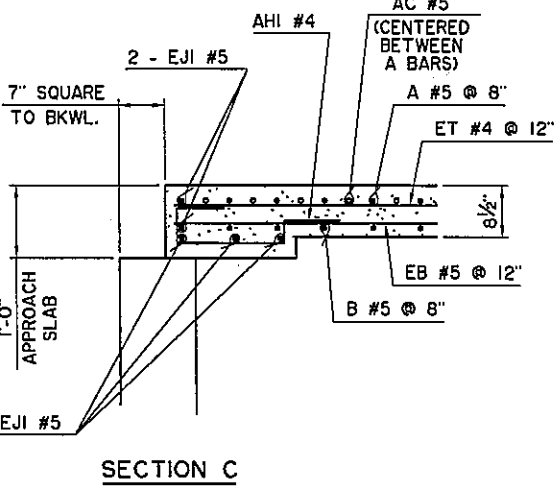
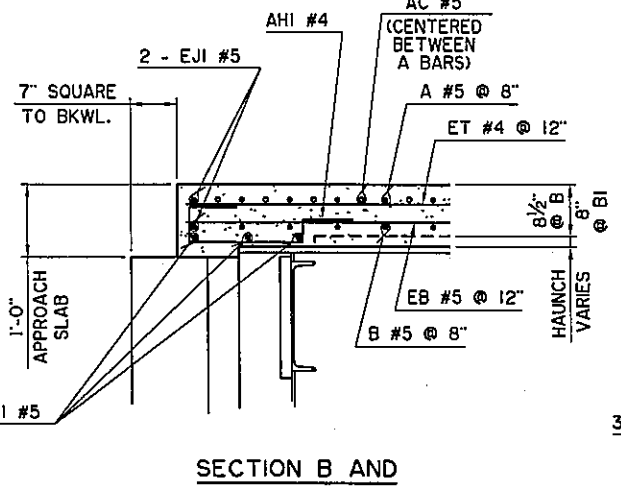
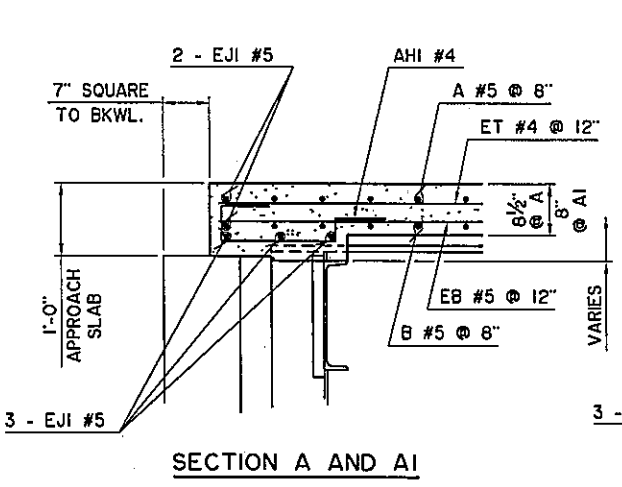
- ① ROTATE BAR TO MAINTAIN MINIMUM CLEARANCE
- ② FOR BAR BEND, SEE SHEET B46
- ③ 2 SETS OF 5
- ④ 2 SETS OF 2
- ⑤ 2 SETS OF 4
- ⑥ MECHANICAL SPLICE TO EXISTING REINFORCING
- ⑦ 2 SETS OF 3
- ⑧ 2 SETS OF 5
- ⑨ PROVIDE MECHANICAL SPLICE FOR BARS IN PHASE 2A
- ⑩ FOR BAR BEND, SEE STD. FSHP-42
- ⑪ FOR BAR BEND, SEE STD. SFPI-2
- ⑫ INCLUDED IN CONTRACT UNIT PRICE OF "CONCRETE PARAPET"



NOTE:
FOR SECTION E AND F,
SEE SHEET B47.



ADDITIONAL SLAB REINFORCING PLAN



Design	TAC		U.S. HIGHWAY 69 - McALESTER SLAB REINFORCING DETAILS AOK RAILROAD BRIDGE "S" NORTHBOUND JOB PIECE NO. 14999(04) SHEET NO. B42
Drawn	KGL	HEJ	
Checked	ADT	SAS	
Approved	CEG		
Squad	WEA		

I:\Active\0403\RD\DWG\B42-SlabRebar\B42.dwg, 7/6/2016 7:30:38 AM, Howard