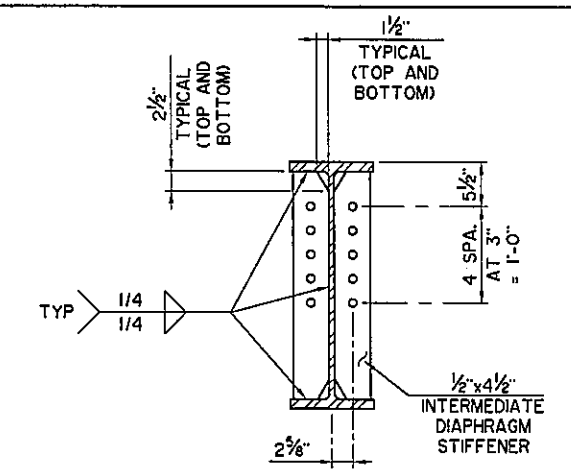
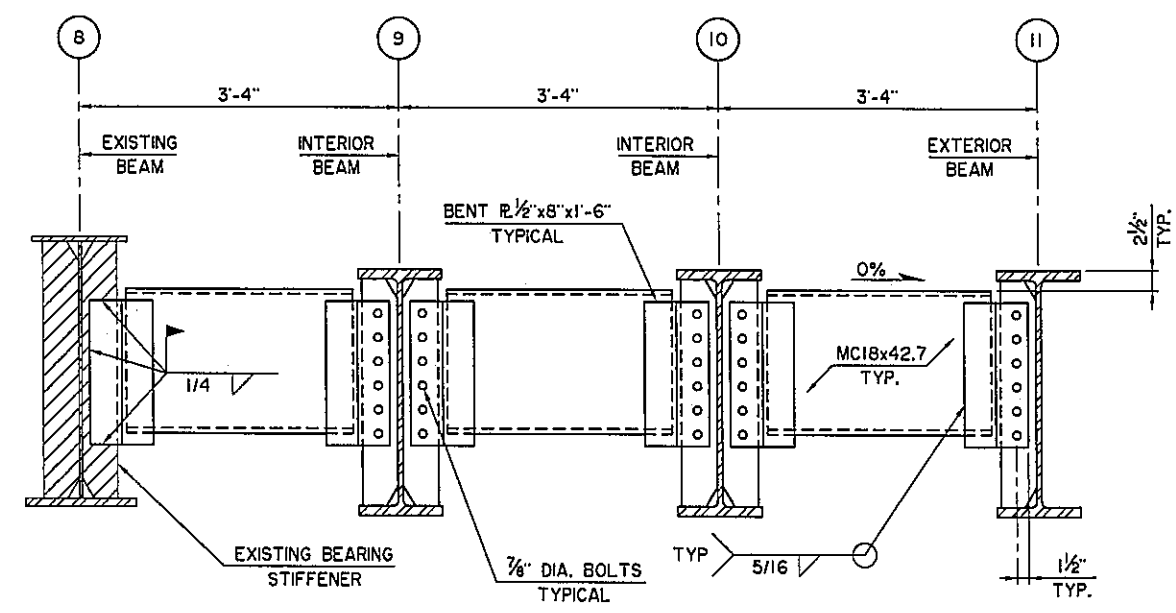


INTERMEDIATE DIAPHRAGM ELEVATION

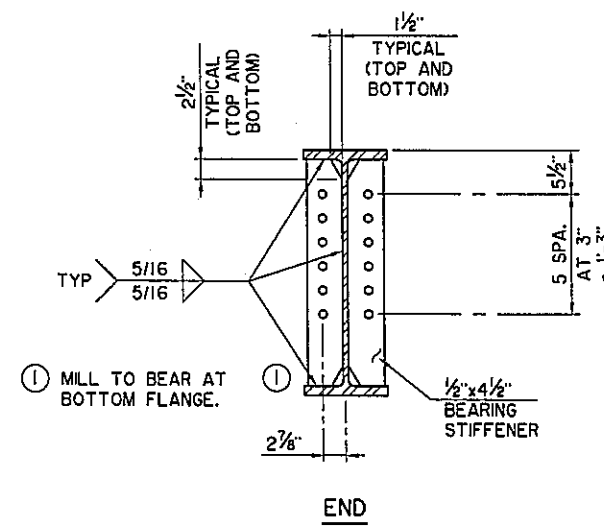
NOTE:
 CONTRACTOR MAY ELECT TO FABRICATE A BENT PLATE DIAPHRAGM IN LIEU OF CHANNEL AND GUSSET PLATE. PLATE SHALL BE 1/2" MINIMUM THICKNESS AND FORMED IN THE SHAPE OF CHANNEL WITH MINIMUM 4" FLANGES. DEPTH OF BENT PLATE DIAPHRAGM SHALL BE EQUAL OR GREATER THAN THAT SHOWN FOR COMBINED CHANNEL AND GUSSET PLATE. COST TO CONSTRUCT BENT PLATE DIAPHRAGM SHALL BE AT CONTRACTOR'S EXPENSE.



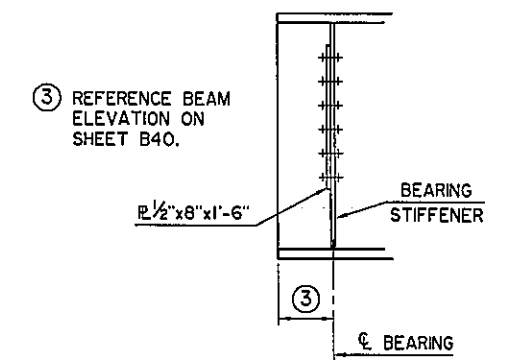
INTERMEDIATE DIAPHRAGM STIFFENER DETAILS



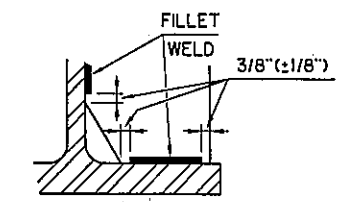
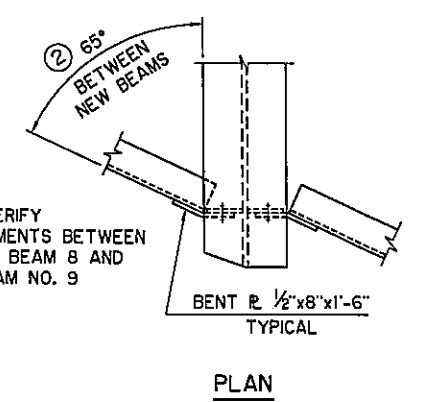
BEARING DIAPHRAGM ELEVATION



BEARING DIAPHRAGM STIFFENER DETAILS



END DIAPHRAGM SECTION



FILLET WELD TERMINATION DETAIL

Design	TAC		U.S. HIGHWAY 69 - McALESTER	
Drawn	KGL	HEJ	DIAPHRAGM DETAILS	
Checked	ADT	SAS	AOK RAILROAD	
Approved	CEG		BRIDGE "S" NORTHBOUND	
Squad	WEA		JOB PIECE NO. 14999(04)	SHEET NO. B41

I:\Active\0403\RD RR\DWG\B41-DiaphragmDtls.dwg, 7/6/2016 7:28:54 AM, Howard