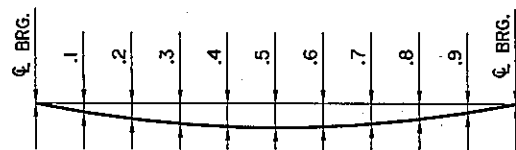


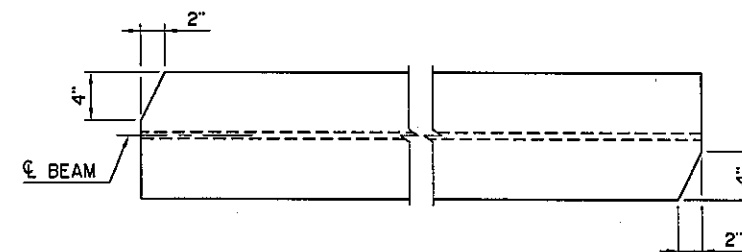
ELEVATION
W 30X108, SPANS 1 AND 3
W 30X148, SPAN 2



DEAD LOAD DEFLECTION DIAGRAM

BEAM SCHEDULE						
	SPAN 1 BEAM 9, 10	SPAN 1 BEAM 11	SPAN 2 BEAM 9, 10	SPAN 2 BEAM 11	SPAN 3 BEAM 9, 10	SPAN 3 BEAM 11
DIMENSION A	9"	9"	8"	8"	8"	8"
DIMENSION B	13'-7 7/16"	(1)	18'-7 3/4"	(1)	13'-8 7/16"	(1)
DIMENSION C	14'-11 5/16"	(1)	19'-10 1/16"	(1)	14'-11 5/16"	(1)
DIMENSION D	14'-10 1/4"	(1)	19'-10 1/16"	(1)	14'-9 1/4"	(1)
DIMENSION E	8"	8"	7 1/2"	7 1/2"	9"	9"
DIMENSION F	14'-9 1/4"	14'-9 1/4"	19'-9 3/16"	19'-9 3/16"	14'-10 1/4"	14'-10 1/4"
DIMENSION G	14'-11 5/16"	14'-11 5/16"	19'-10 1/16"	19'-10 1/16"	14'-11 5/16"	14'-11 5/16"
DIMENSION H	13'-8 7/16"	13'-8 7/16"	18'-8 1/4"	18'-8 1/4"	13'-7 7/16"	13'-7 7/16"
DIMENSION J	5"	5"	4"	4"	5"	5"
K	44	44	59	59	44	44
DIMENSION L	44'-0"	44'-0"	59'-0"	59'-0"	44'-0"	44'-0"
SPAN	43'-5"	43'-5"	58'-4 1/2"	58'-4 1/2"	43'-5"	43'-5"
BEAM	W30x108	W30x108	W30x148	W30x148	W30x108	W30x108
BEAM LENGTH	44'-10"	44'-10"	59'-8"	59'-8"	44'-10"	44'-10"

(1) NO INTERMEDIATE DIAPHRAGM STIFFENER AT EXTERIOR FACE OF BEAM 11.



BEAM END DETAIL

NOTE:
BEAMS DO NOT NEED TO BE CLIPPED AT ABUTMENT ENDS.

SPAN	BEAM AND DIAPHRAGM DEFLECTION						
	BEAM	BRG.	.1 8 .9	.2 8 .8	.3 8 .7	.4 8 .6	.5
1, 3	9, 10, 11	0.00"	0.02"	0.04"	0.06"	0.07"	0.07"
2	9, 10, 11	0.00"	0.06"	0.12"	0.17"	0.20"	0.21"
SPAN	DECK SLAB, HAUNCH, SIP FORMS AND TRAFFIC RAIL DEFLECTION (2)						
	BEAM	BRG.	.1 8 .9	.2 8 .8	.3 8 .7	.4 8 .6	.5
1, 3	9, 10	0.00"	0.08"	0.15"	0.21"	0.25"	0.26"
	11	0.00"	0.08"	0.14"	0.20"	0.23"	0.24"
2	9, 10	0.00"	0.18"	0.34"	0.46"	0.54"	0.57"
	11	0.00"	0.17"	0.32"	0.43"	0.51"	0.53"

(2) THE DEAD LOAD DEFLECTION SHOWN AT THE TENTH POINTS ARE THE DEFLECTIONS DUE TO DECK SLAB + HAUNCH + 5 P.S.F. SIP DECK FORM ALLOWANCE + CONCRETE TRAFFIC RAIL. IT DOES NOT INCLUDE THE BEAM WEIGHT, DIAPHRAGMS OR FUTURE WEARING SURFACE.

Design	TAC		U.S. HIGHWAY 69 - McALESTER	
Drawn	KGL	HEJ	ROLLED BEAM DETAILS	
Checked	ADT	SAS	AOK RAILROAD	
Approved	CEG		BRIDGE "S" NORTHBOUND	
Squad	WEA		JOB PIECE NO. 14999(04)	SHEET NO. B40