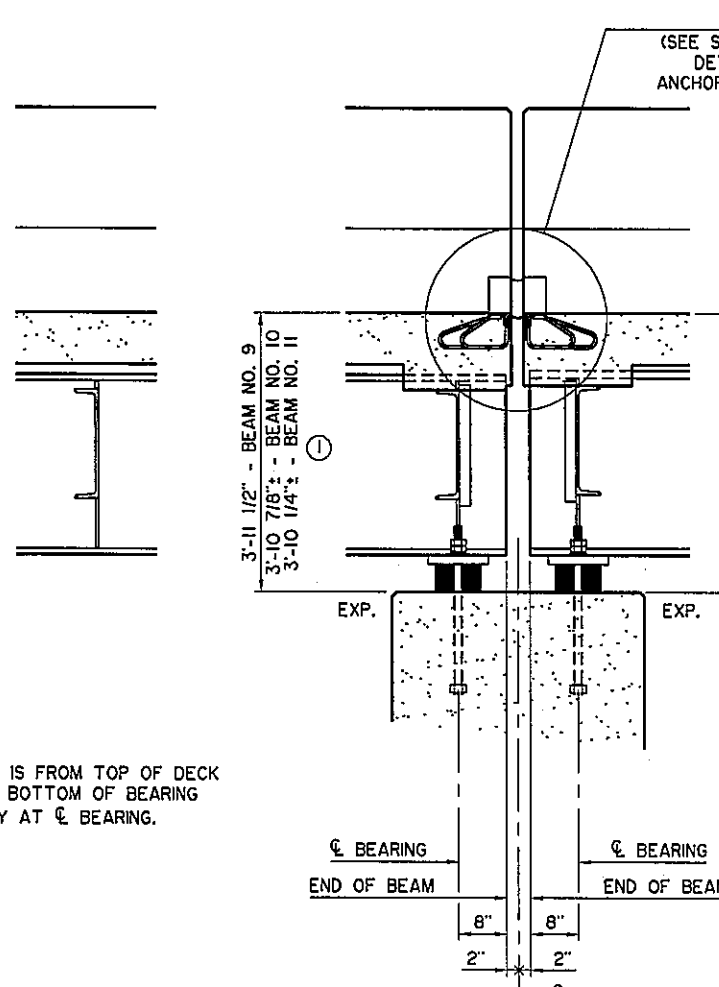
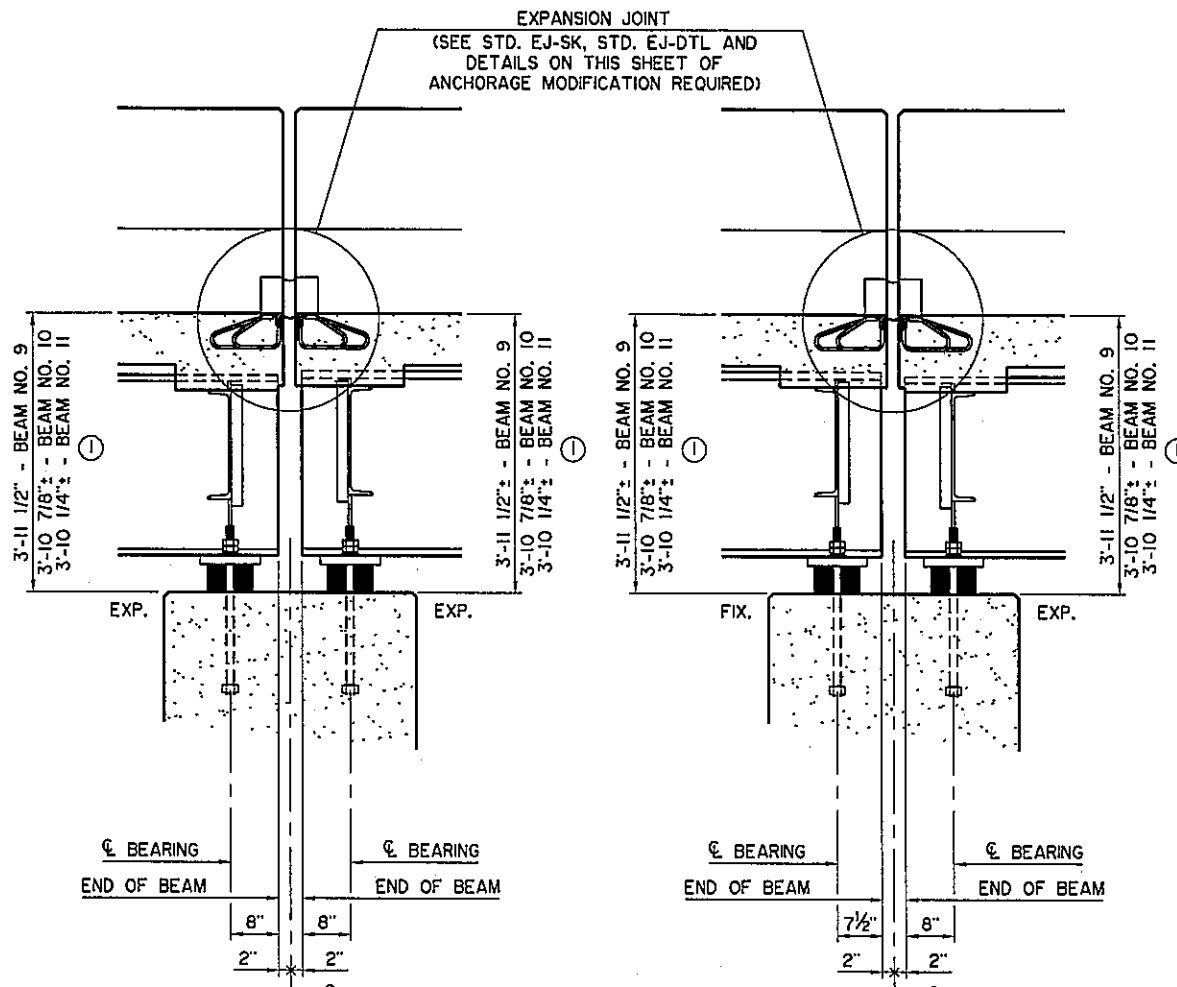


ABUTMENT NO. 1

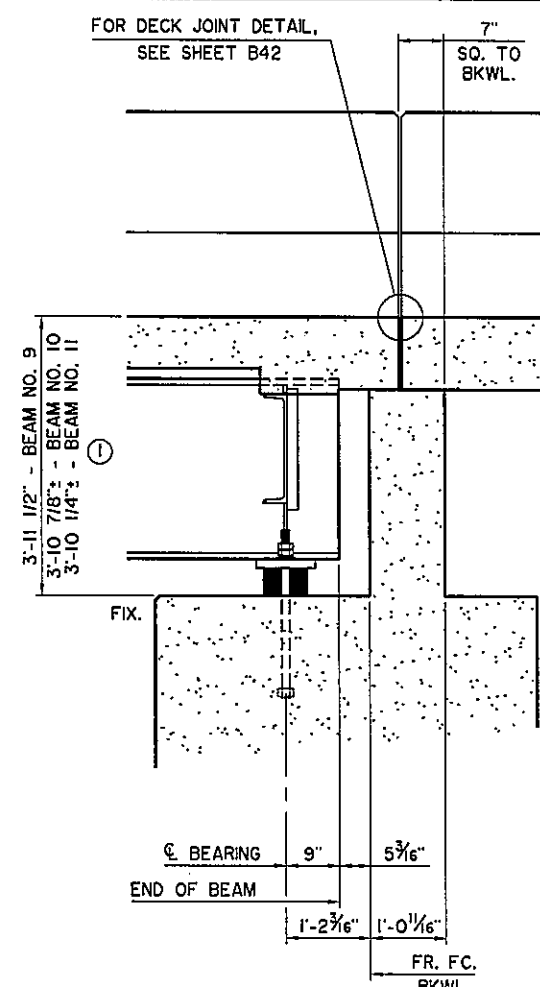


INTERMEDIATE DIAPHRAGM



PIER NO. 1

PIER NO. 2



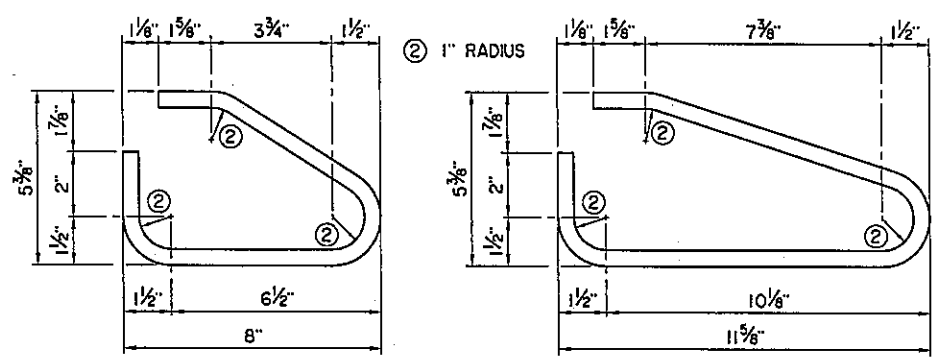
ABUTMENT NO. 2

① DIMENSION IS FROM TOP OF DECK SLAB TO BOTTOM OF BEARING ASSEMBLY AT CL BEARING.

LONGITUDINAL SECTION

DESCRIPTION	UNIT	SUPERSTRUCTURE QUANTITIES			
		BRIDGE "S"		BRIDGE "T"	
		PHASE 1A	PHASE 2A	PHASE 1A	PHASE 2A
SAW-CUT GROOVING	S.Y.	168.7			
SEALED EXPANSION JOINT	L.F.	82.0	63.4	36.7	63.4
CONCRETE PARAPET	L.F.		5.3	5.3	5.3
42" F-SHAPED PARAPET	L.F.	151.7			
STRUCTURAL STEEL	LB.	63,240			
STAINLESS STEEL FIXED BEARING ASSEMBLY	EA.	9			
STAINLESS STEEL EXPANSION BEARING ASSEMBLY	EA.	9			
CLASS AA CONCRETE	C.Y.	48.0	5.9	2.9	5.9
MECHANICAL SPLICES	EA.	239			
EPOXY COATED REINFORCING STEEL	LB.	11,300	1,110	440	1,110
WATER REPELLENT (VISUALLY INSPECTED)	S.Y.	129	2	2	2
SEALER CRACK PREPARATION	L.F.	150.2			
SEALER RESIN	GAL.	2			
DECK AREA SEALED (FLOODCOATS)	S.Y.	150.3	496.0	285.2	497.4
(PL) REPLACE BRIDGE ITEM (TYPE A)	EA.		10		10
REMOVAL OF EXISTING PARAPET	L.F.		5.3	5.3	5.3
REMOVAL OF DECK	S.Y.		19.4	11.5	19.4

EXPANSION JOINT SETTING SCHEDULE	
TEMPERATURE	OPENING
PIER NO. 1	
10° F	2 3/8"
27° F	2 1/4"
43° F	2 1/8"
60° F	2"
77° F	1 7/8"
93° F	1 3/4"
110° F	1 5/8"
PIER NO. 2	
21° F	2 1/8"
60° F	2"
99° F	1 7/8"



W1 MODIFIED
W2 MODIFIED
EXPANSION JOINT ANCHOR BAR DETAILS

NOTE: FABRICATE MODIFIED W1 AND W2 BARS FROM W20 DEFORMED STEEL WIRE.

③ FOR #5 REBAR

Design	TAC		U.S. HIGHWAY 69 - McALESTER LONGITUDINAL SECTION AOK RAILROAD BRIDGE "S" NORTHBOUND, BRIDGE "T" SOUTHBOUND JOB PIECE NO. 14999(04) SHEET NO. B38
Drawn	KGL	HEJ	
Checked	ADT	JKJ	
Approved	CEG		
Squad	WEA		