

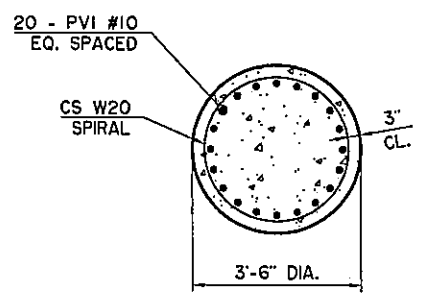
DRILLED SHAFT ROLLER DETAIL

NOTE: CONCRETE USED IN THE CONCRETE ROLLER SHALL HAVE A MINIMUM 28 DAY COMPRESSION STRENGTH OF 4,000 PSI. SLAB BOLSTERS, HIGH CHAIRS, OR PLASTIC ROLLERS SHALL NOT BE SUBSTITUTED FOR THE CONCRETE ROLLERS.

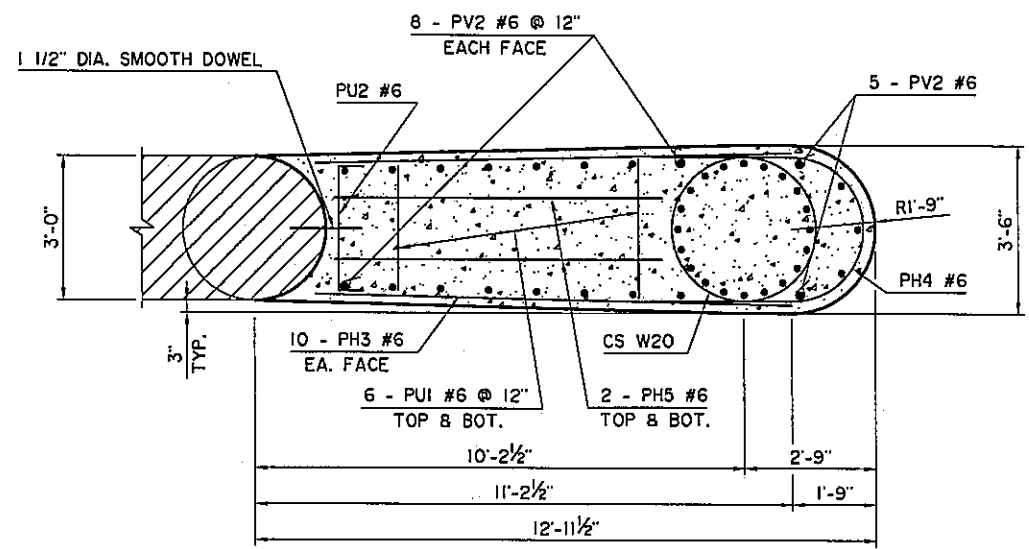
PIER NO. 1 BAR LIST					
MARK	SIZE	NO.	FORM	LENGTH	VARIATION
EPOXY COATED REINFORCING BARS					
DV1	#10	20	STR.	15'-6"	
PH1	#6	6	BNT.	11'-4"	
PH2	#4	10	STR.	10'-0"	
PH3	#6	24	STR.	10'-0"	
PH4	#6	6	BNT.	10'-8"	
PH5	#6	4	STR.	6'-10"	
PT1	#5	8	BNT.	14'-7"	
③ PUI	#6	12	BNT.	3'-9" AVG.	3'-7" TO 3'-11"
PU2	#6	6	BNT.	3'-7"	
PV1	#10	20	STR.	23'-2"	
PV2	#6	21	STR.	6'-8"	
PLAIN REINFORCING BARS					
① CS	W20	1	BNT.	387'-1"	
①② DS1	W20	1	BNT.	906'-2"	
② DV2	#11	30	STR.	27'-6"	
② PT2	#4	9	BNT.	10'-11"	

PIER NO. 2 BAR LIST					
MARK	SIZE	NO.	FORM	LENGTH	VARIATION
EPOXY COATED REINFORCING BARS					
DV1	#10	20	STR.	15'-6"	
PH1	#6	6	BNT.	11'-4"	
PH2	#4	10	STR.	10'-0"	
PH3	#6	24	STR.	10'-0"	
PH4	#6	6	BNT.	10'-8"	
PH5	#6	4	STR.	6'-10"	
PT1	#5	8	BNT.	14'-7"	
③ PUI	#6	12	BNT.	3'-9" AVG.	3'-7" TO 3'-11"
PU2	#6	6	BNT.	3'-7"	
PV1	#10	20	STR.	23'-2"	
PV2	#6	21	STR.	6'-8"	
PLAIN REINFORCING BARS					
① CS	W20	1	BNT.	387'-1"	
② DS2	W20	1	BNT.	968'-7"	
② DV3	#11	30	STR.	29'-6"	
② PT2	#4	9	BNT.	10'-11"	

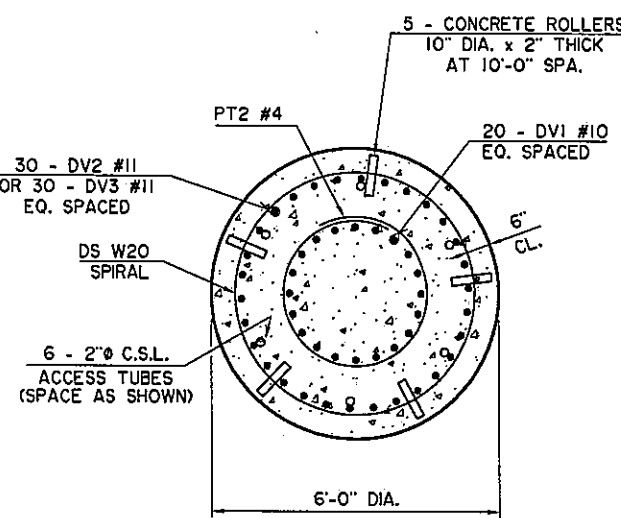
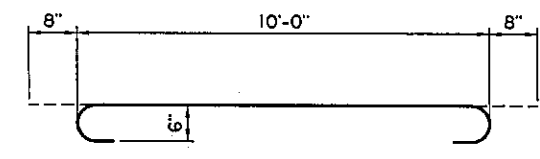
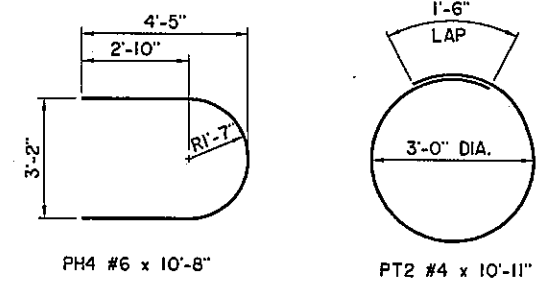
- ① LENGTH SHOWN DOES NOT ACCOUNT FOR SPLICES. CONTRACTOR MAY ADD SPLICES AS NECESSARY, BUT PAYMENT WILL NOT BE MADE FOR EXTRA LENGTH REQUIRED FOR SPLICES.
- ② ALL COST TO BE INCLUDED IN CONTRACT UNIT PRICE FOR "DRILLED SHAFTS 72" DIAMETER".
- ③ TWO SETS OF 6.



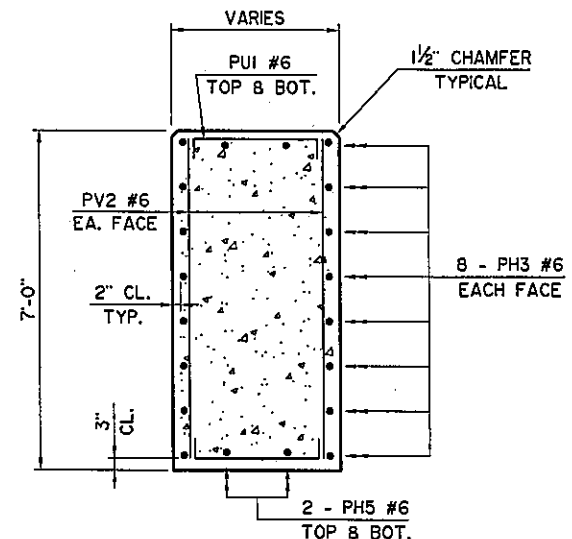
SECTION B-B



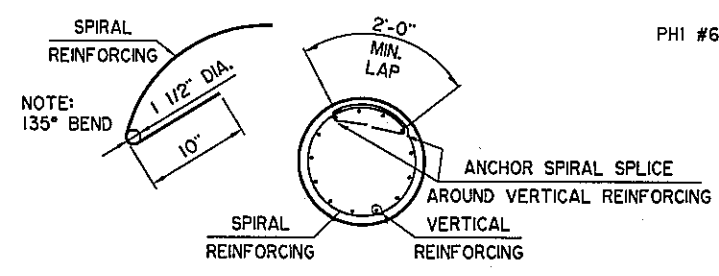
SECTION C-C



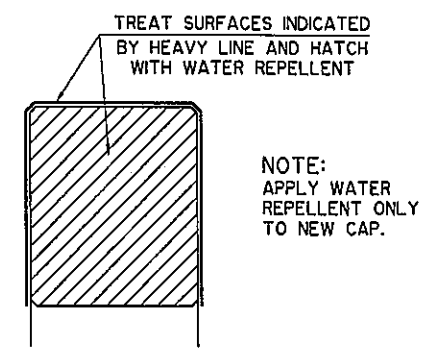
SECTION D-D



SECTION E-E



SPIRAL REINFORCING SPLICE DETAIL



WATER REPELLENT DETAIL

PIER QUANTITIES				
ITEM	UNIT	PIER NO. 1	PIER NO. 2	TOTAL
CLASS A CONCRETE	C.Y.	19.7	19.7	39.4
REINFORCING STEEL	LB.	260	260	520
EPOXY COATED REINFORCING STEEL	LB.	4,420	4,420	8,840
WATER REPELLANT (VISUALLY INSPECTED)	S.Y.	15	15	30
DRILLED SHAFTS 72" DIAMETER	L.F.	28	30	58
CROSSHOLE SONIC LOGGING	EA.			1

Design	TAC		U.S. HIGHWAY 69 - McALESTER PIER DETAILS AOK RAILROAD BRIDGE "S" NORTHBOUND JOB PIECE NO. 14999(04) SHEET NO. B36
Drawn	KGL	HEJ	
Checked	ADT	SAS	
Approved	CEG		
Squad	WEA		

I:\Active\0403\RD\DWG\B36-PierDetails.dwg, 7/6/2016 8:25:01 AM, Howard