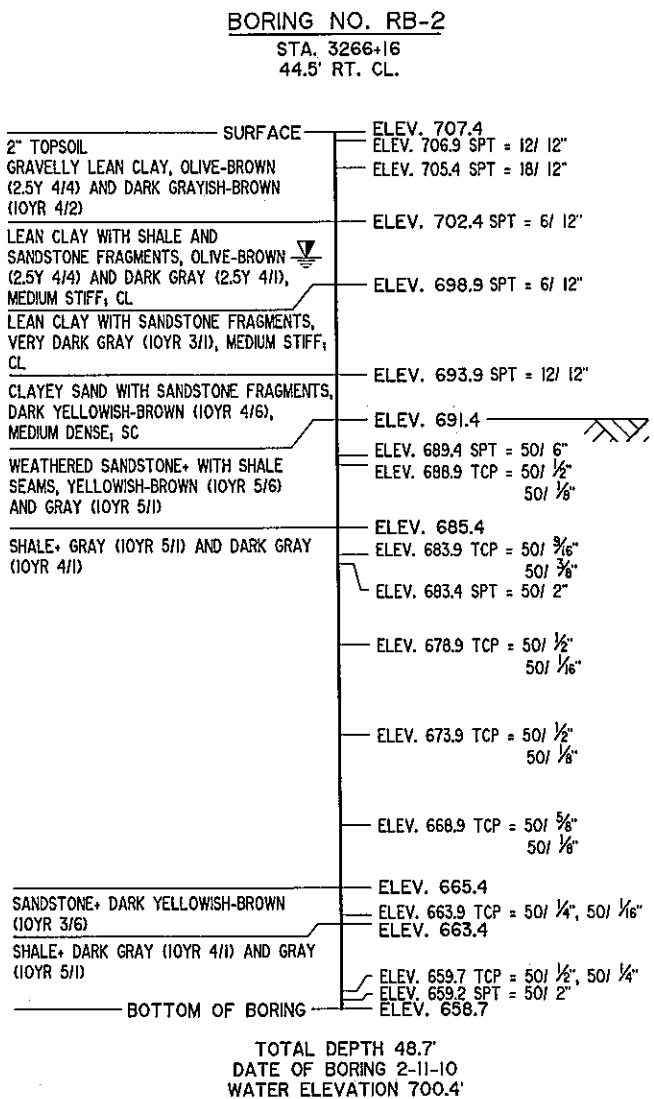


**GEOLOGICAL STATEMENT**

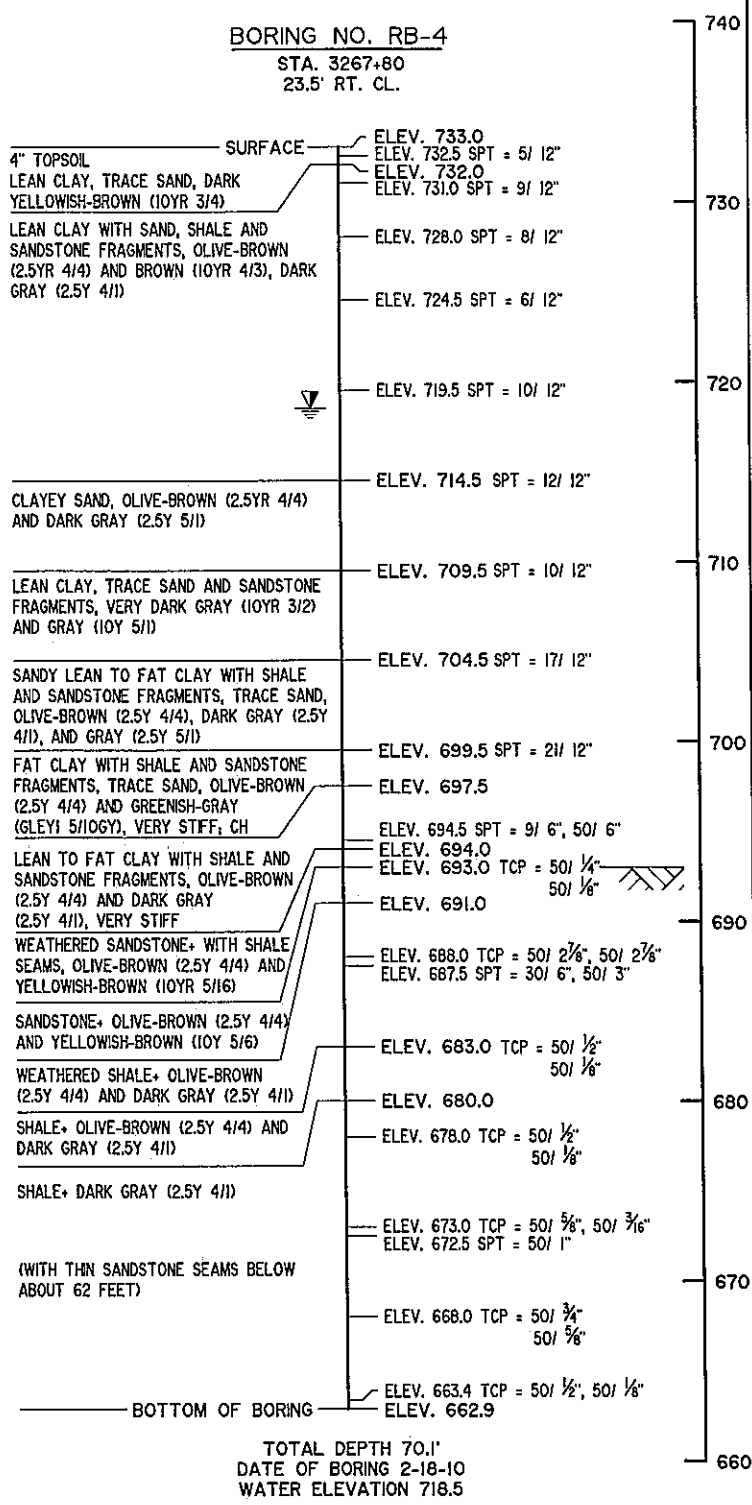
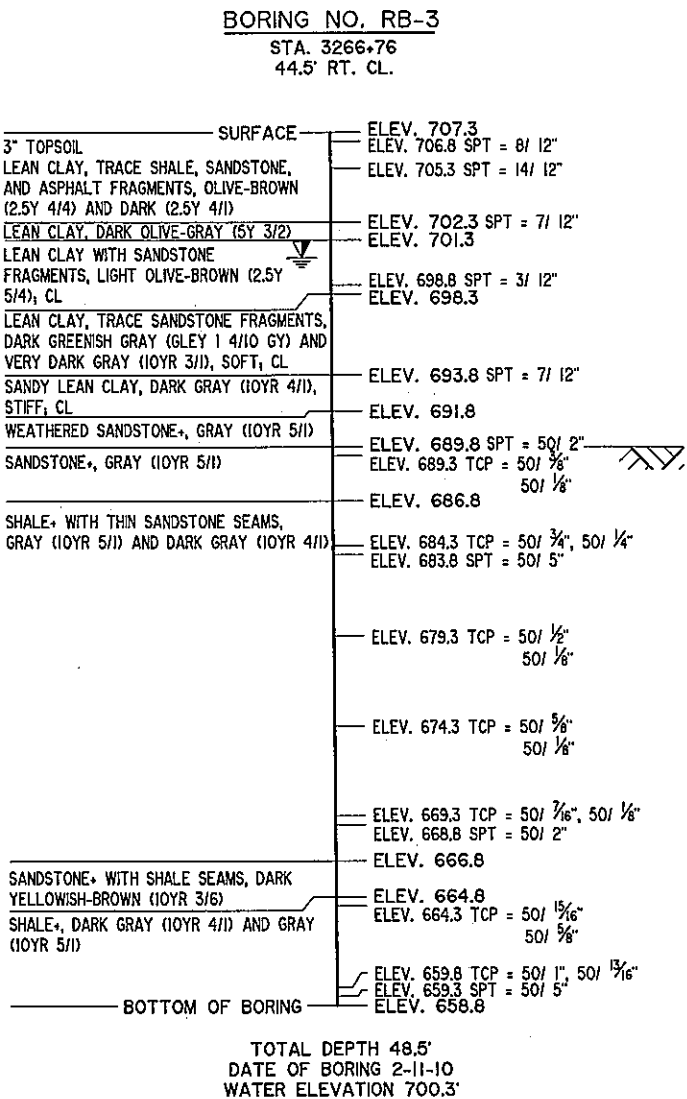
BASED ON THE RESULTS OF OUR BORINGS AND INFORMATION PUBLISHED IN THE OKLAHOMA DEPARTMENT OF TRANSPORTATION MANUAL, "ENGINEERING CLASSIFICATION OF GEOLOGIC MATERIALS", THE PROJECT SITE IS UNDERLAIN BY THE SAVANNA UNIT. SAVANNA UNIT CONSISTS PREDOMINANTLY OF SHALE WITH A LESSER AMOUNT OF SANDSTONE AND RELATIVELY THIN LAYERS OF LIMESTONE AND SILTSTONE.

THE SHALE IS GRAY TO BLACK AND ABOUT 400 FEET THICK. THE SANDSTONE IS MODERATELY HARD TO HARD AND IS FOUND IN BEDS A FEW INCHES TO 10 FEET THICK. THE LIMESTONE AND SILTSTONE LAYERS ARE LESS THAN ONE FOOT THICK AND ARE MINOR.



**NOTES:**

- SPT STANDARD PENETRATION TEST (NO. OF BLOWS/PENETRATION)
- TCP TEXAS CONE PENETRATION TEST (NO. OF BLOWS/PENETRATION)
- WATER ELEVATION 24 HRS. AFTER DRILLING UNLESS OTHERWISE NOTED
- INTERPRETED ROCK LINE
- CLASSIFICATION ESTIMATED FROM DISTURBED SAMPLES. CORE SAMPLES AND PETROGRAPHIC ANALYSIS MAY REVEAL OTHER ROCK TYPES.



**NOTE:**  
INFORMATION SHOWN ON THIS SHEET TAKEN FROM GEOTECHNICAL REPORT PREPARED BY TERRACON CONSULTANTS, INC. DATED APRIL 1, 2010. A COPY OF THIS REPORT IS AVAILABLE FROM THE DEPARTMENT UPON REQUEST.

USE INTERPRETED ROCK LINE FOR ESTIMATING PURPOSES ONLY

WATER ELEVATIONS SHOWN WERE OBTAINED AT THE TIME BORINGS WERE DRILLED AND MAY FLUCTUATE THROUGHOUT THE YEAR

Design	TER		<b>U.S. HIGHWAY 69 - McALESTER</b> <b>FOUNDATION REPORT</b> <b>AOK RAILROAD</b> <b>BRIDGE "S" NORTHBOUND</b> JOB PIECE NO. 14999(04) SHEET NO. B27
Drawn	KGL	DRB	
Checked	ADT	ADT	
Approved	CEG		
Squad	WEA		