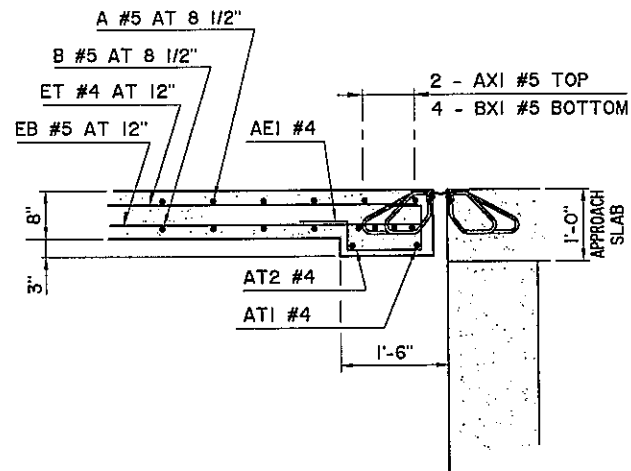
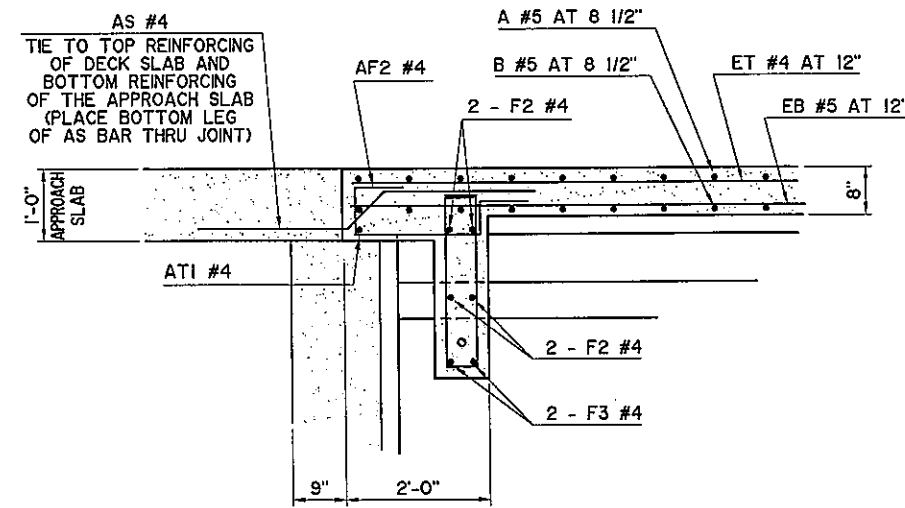


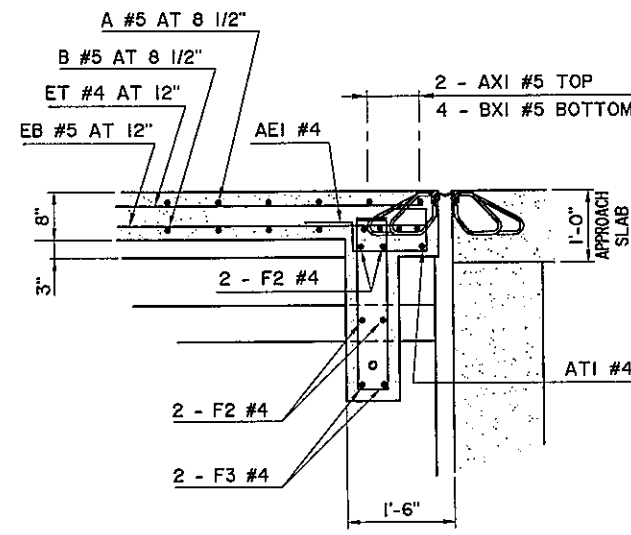
SECTION C



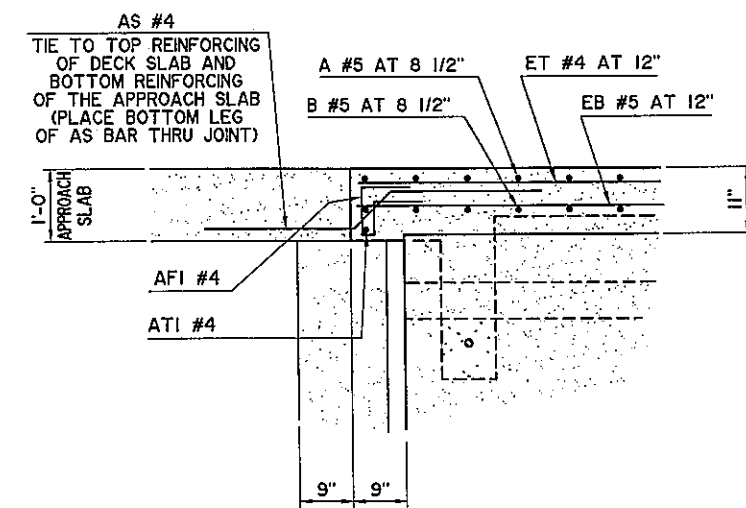
SECTION E



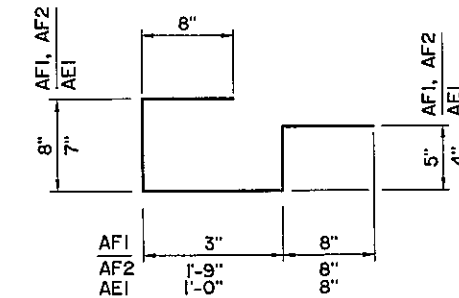
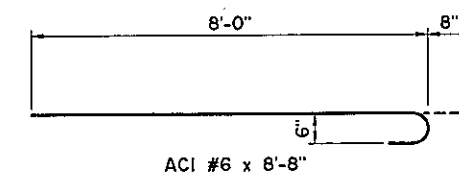
SECTION B



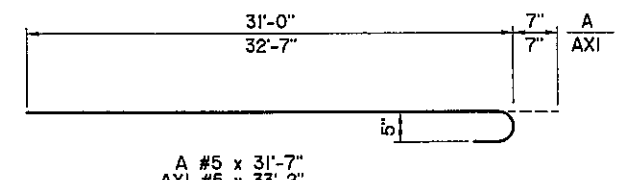
SECTION D



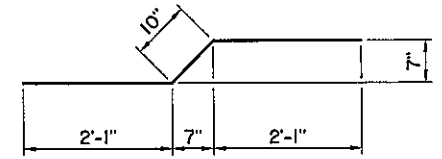
SECTION A



AF1 #4 x 2'-8"
AF2 #4 x 4'-2"
AE1 #4 x 3'-3"



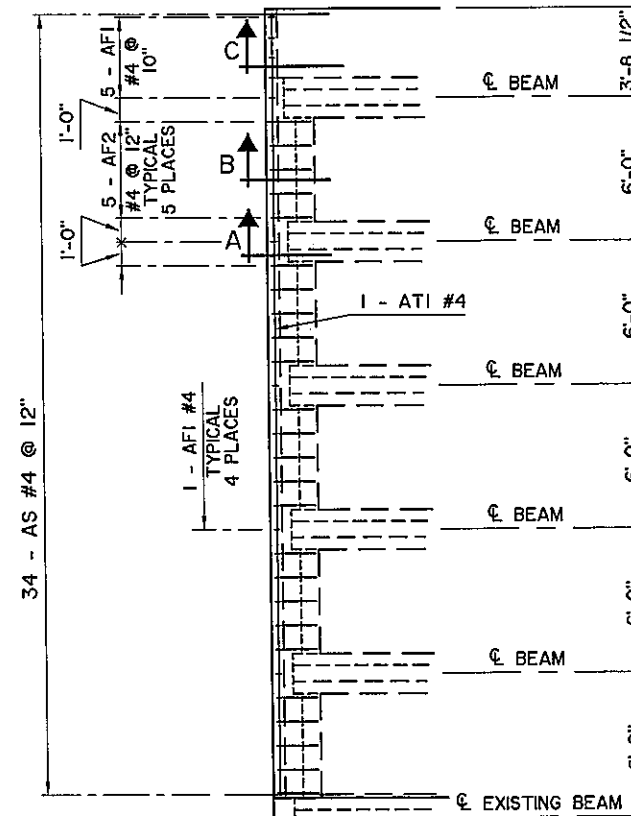
A #5 x 31'-7"
AXI #5 x 33'-2"



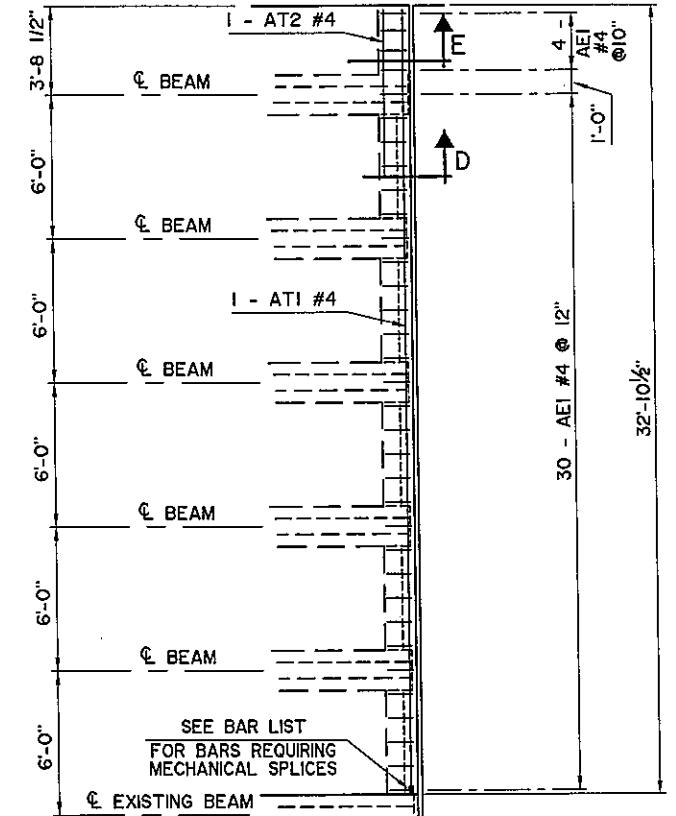
AS #4 x 5'-0"

PHASE IA
SUPERSTRUCTURE BAR LIST
ONE BRIDGE SHOWN, TWO REQUIRED

MARK	SIZE	NO.	FORM	LENGTH
EPOXY COATED REINFORCING BARS				
①	A	#5	155 BNT.	31'-7"
	ACI	#6	156 BNT.	8'-8"
②	AXI	#5	2 BNT.	33'-2"
	AS	#4	34 BNT.	5'-0"
①	B	#5	155 STR.	31'-0"
②	BXI	#5	4 STR.	32'-7"
③	ET	#4	34 STR.	113'-0"
③	EB	#5	34 STR.	113'-0"
④	FS2	#5	112 BNT.	7'-4"
	AF1	#4	9 BNT.	2'-8"
	AF2	#4	25 BNT.	4'-2"
	AE1	#4	34 BNT.	3'-3"
⑤	AT1	#4	2 STR.	32'-7"
	AT2	#4	1 STR.	7'-0"
⑥	UI	#4	30 BNT.	4'-9"
	U2	#4	50 BNT.	6'-3"
	F1	#4	30 STR.	5'-0"
	F2	#4	40 STR.	4'-0"
	F3	#4	20 STR.	5'-0"



ABUTMENT NO. 1



ABUTMENT NO. 2

ADDITIONAL SLAB REINFORCING AT DIAPHRAGM PLAN

BRIDGE "Q" SHOWN, BRIDGE "R" SYMMETRICAL ABOUT CENTERLINE OF U.S. HIGHWAY 69

NOTE:
DECK SLAB REINFORCING
NOT SHOWN FOR CLARITY.

- ① MECHANICAL SPLICE TO EXISTING TRANSVERSE REBAR
- ② PROVIDE MECHANICAL SPLICE FOR BARS IN PHASE 2A
- ③ INCLUDES ONE LAP AT 2'-6" MINIMUM
- ④ FOR BAR BEND, SEE STD. FSHP-42
- ⑤ PROVIDE MECHANICAL SPLICE FOR BARS IN PHASE 2A AT ABUTMENT NO. 2 ONLY
- ⑥ FOR BAR BEND, SEE SHEET B16.

Design	CEG		U.S. HIGHWAY 69 - McALESTER	
Drawn	KGL	KGL		
Checked	ADT	JKJ	SLAB REINFORCING DETAILS WADE WATTS AVENUE BRIDGE "Q" SOUTHBOUND, BRIDGE "R" NORTHBOUND	
Approved	CEG			
Squad	WEA		JOB PIECE NO. 14999(04)	SHEET NO. B19