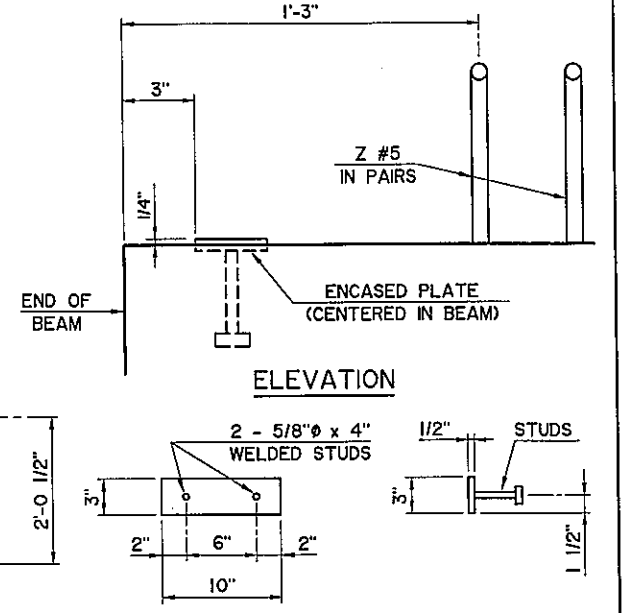
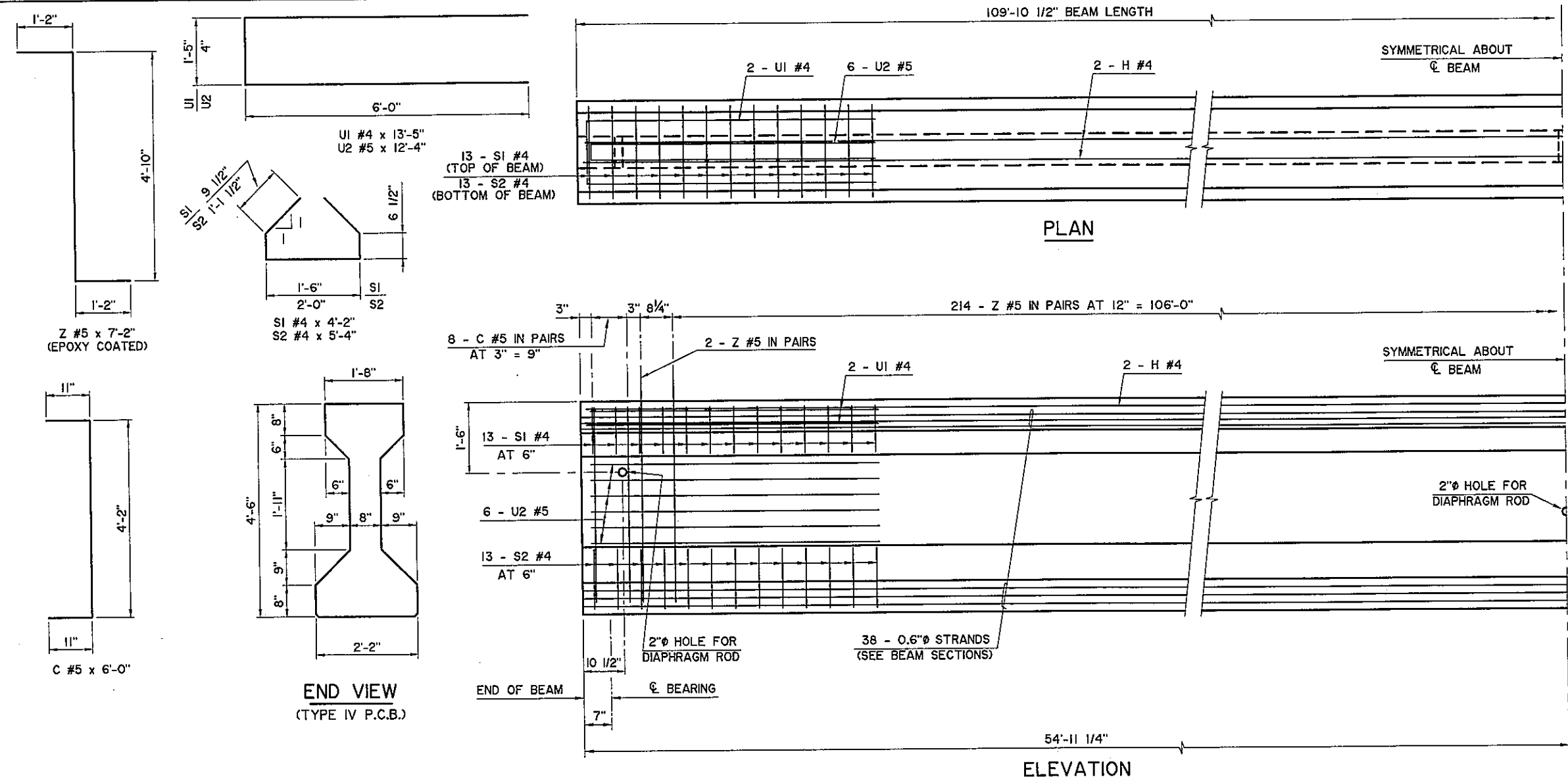


PRESTRESSED CONCRETE BEAM NOTES

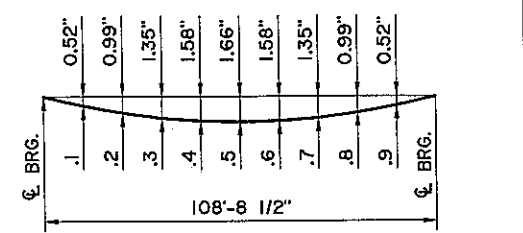
COMPRESSIVE STRENGTH
 THE REQUIRED COMPRESSIVE STRENGTH OF THE CONCRETE IS 6,000 P.S.I. AT TRANSFER OF PRESTRESS AND 8,000 P.S.I. AT 28 DAYS.

STRAND TYPE
 THE REQUIRED STRAND TYPE IS LOW-RELAXATION. USE STRAND HAVING A NOMINAL DIAMETER OF 0.6" WITH ULTIMATE TENSILE STRENGTH OF 270 K.S.I.



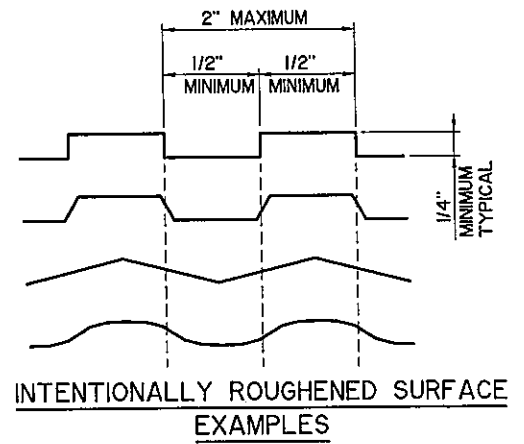
ENCASED BEAM PLATE DETAILS

NOTE:
 ENCASED BEAM PLATE LOCATED AT EXPANSION END ONLY.



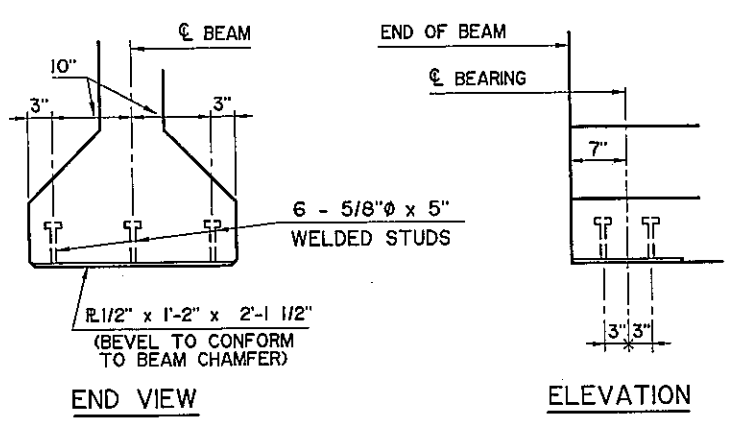
DEAD LOAD DEFLECTION DIAGRAM

NOTE:
 THE DEAD LOAD DEFLECTION SHOWN ABOVE AT THE TENTH POINTS ARE THE INITIAL DEFLECTIONS DUE TO DECK SLAB + DIAPHRAGMS + 5 P.S.F. DECK FORM ALLOWANCE + CONCRETE PARAPET. IT DOES NOT INCLUDE THE BEAM WEIGHT OR FUTURE WEARING SURFACE.



INTENTIONALLY ROUGHENED SURFACE EXAMPLES

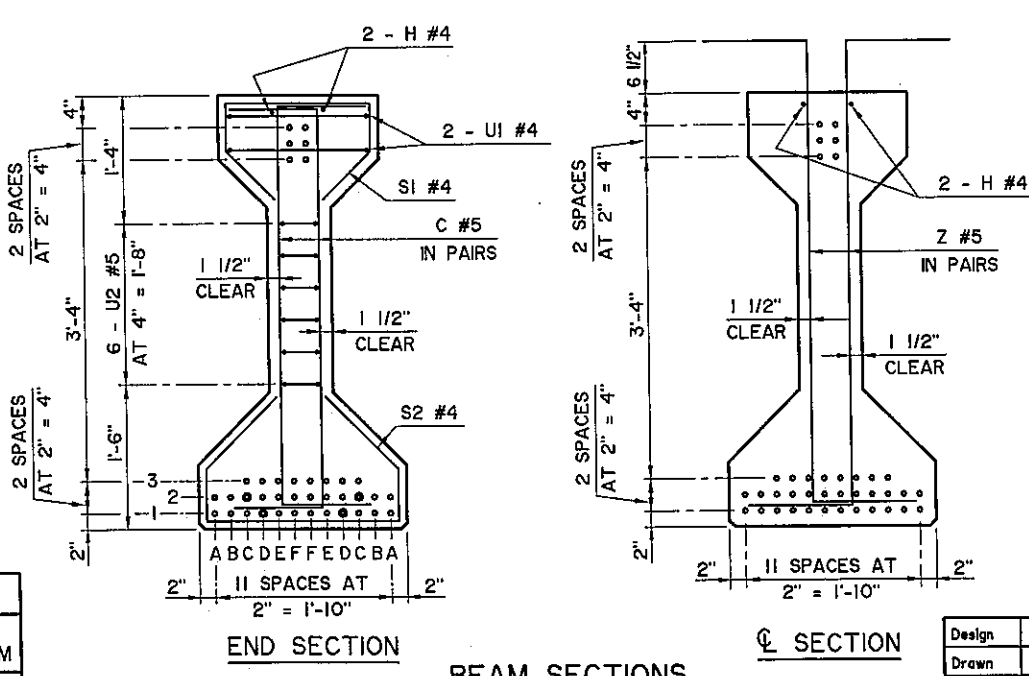
TOP SURFACE OF P.C. BEAMS SHALL BE INTENTIONALLY ROUGHENED TO A MINIMUM HEIGHT OF 1/4" OVER A MAXIMUM PITCH OF 2" MEASURED LONGITUDINALLY ALONG THE LENGTH OF THE BEAM. THE CREST AND TROUGH ASSOCIATED WITH THE HEIGHT SHALL NOT BE LESS THAN 1/2" AND SHALL EXTEND THE FULL WIDTH OF THE TOP FLANGE. ROUGHENED SURFACE MAY BE OBTAINED BY A SPECIAL TROWEL AS SHOWN IN THE EXAMPLES, BY CLEANING THE CONCRETE SURFACE WITH A STIFF WIRE BRUSH (OR BLASTING) TO THE EXTENT THAT AGGREGATE IS EXPOSED TO A HEIGHT OF 1/4", OR BY ANOTHER APPROVED METHOD. THE METHOD USED SHALL BE SUBMITTED FOR APPROVAL BY THE ENGINEER. REPAIR ANY DAMAGE TO REINFORCEMENT EPOXY COATING BEFORE PLACEMENT OF DECK CONCRETE.



ENCASED SOLE PLATE DETAILS

NOTE:
 ENCASED SOLE PLATE LOCATED AT EACH END OF BEAM.

DEBOND SCHEDULE	
DEBOND PAIR	DEBOND LENGTH FROM END OF BEAM
C2	4'-0"
D1	8'-0"



BEAM SECTIONS
 (38 - 0.6" STRANDS)

Design	CEG
Drawn	KGL KGL
Checked	ADT JKJ
Approved	CEG
Squad	WEA

U.S. HIGHWAY 69 - McALESTER
TYPE IV P.C.B. DETAILS
 WADE WATTS AVENUE
 BRIDGE "Q" SOUTHBOUND, BRIDGE "R" NORTHBOUND
 JOB PIECE NO. 14999(04) SHEET NO. 816