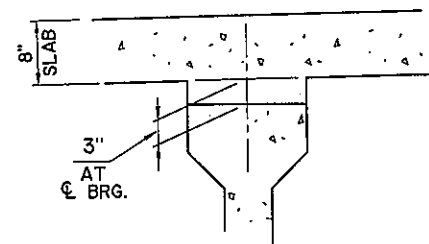


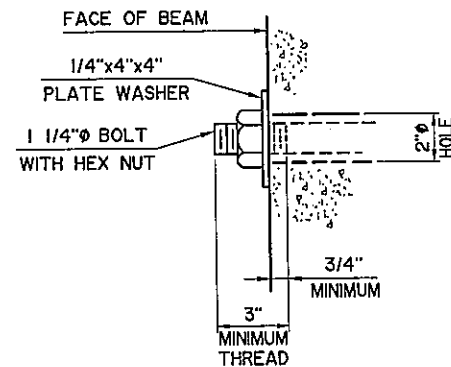
TYPICAL CROSS SECTION

AT INTERMEDIATE DIAPHRAGMS
BRIDGE "Q" (SOUTHBOUND) SHOWN, BRIDGE "R" (NORTHBOUND) OPPOSITE HAND

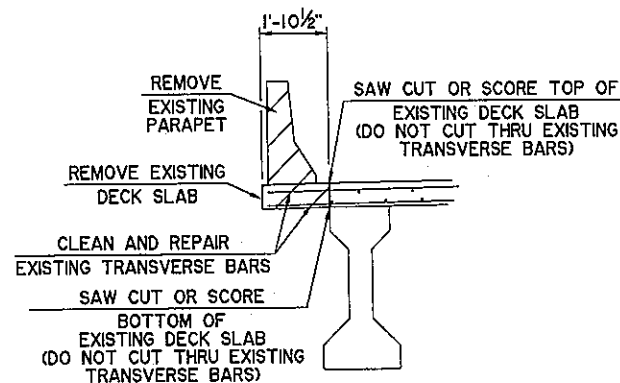


BEAM HAUNCH DETAIL

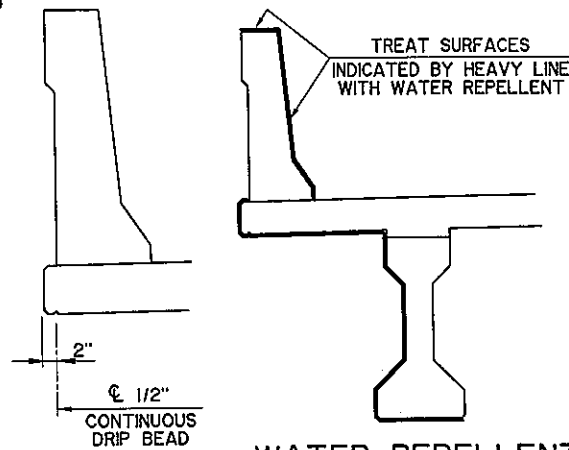
NOTE:
PLAN QUANTITIES FOR CLASS AA CONCRETE INCLUDE BEAM HAUNCHES. THE HAUNCH HEIGHT SHOWN IS THE THEORETICAL HAUNCH HEIGHT AT THE CENTERLINE BEARING ONLY, MEASURED FROM THE BOTTOM OF THE DECK SLAB TO THE TOP OF THE BEAM, AND VARIES ACROSS THE SPAN. DETERMINE THE ACTUAL HAUNCH HEIGHT (ACCOUNTING FOR BEAM CAMBER, DEAD LOAD DEFLECTION AND ROADWAY GRADE) AFTER ERECTION OF BEAMS AND SUBMIT TO THE ENGINEER FOR APPROVAL. THE ENGINEER WILL NOT MEASURE DIFFERENCES BETWEEN THE THEORETICAL AND THE ACTUAL HAUNCH HEIGHTS FOR PAYMENT.



DETAIL C



DETAIL A



DETAIL B

WATER REPELLENT TREATMENT DETAIL

SUPERSTRUCTURE QUANTITIES

DESCRIPTION	UNIT	BRIDGE "Q"		BRIDGE "R"	
		PHASE 1A	PHASE 2A	PHASE 1A	PHASE 2A
PRESTRESSED CONCRETE BEAMS (TYPE IV)	L.F.	549		549	
SAW-CUT GROOVING	S.Y.	386.5		386.5	
SEALED EXPANSION JOINT	L.F.	31.9	36.5	31.9	38.5
CONCRETE PARAPET	L.F.		1.3		1.3
42" F-SHAPED PARAPET	L.F.	110.7		110.7	
STRUCTURAL STEEL	L.B.	350		350	
STAINLESS STEEL FIXED BEARING ASSEMBLY	EA.	5		5	
STAINLESS STEEL EXPANSION BEARING ASSEMBLY	EA.	5		5	
CLASS AA CONCRETE	C.Y.	99.2	3.4	99.2	3.4
MECHANICAL SPLICES	EA.	317		317	
EPOXY COATED REINFORCING STEEL	L.B.	20,680	580	20,680	580
WATER REPELLENT (VISUALLY INSPECTED)	S.Y.	183	1	183	1
SEALER CRACK PREPARATION	L.F.	110.7		110.7	
SEALER RESIN	GAL.	2		2	
REMOVAL OF BRIDGE ITEM (TYPE C)	EA.		6		6
REMOVAL OF EXISTING PARAPET	L.F.	110.2	1.3	110.2	1.3
REMOVAL OF DECK	S.Y.	23.0	5.9	23.0	5.9

① 316 FOR #5 REBAR AND 1 FOR #4 REBAR

DO NOT PLACE THE CONCRETE FOR THE DECK SLAB OR APPLY OTHER MASSIVE LOADS TO THE BEAMS OR DIAPHRAGMS UNTIL THE CONCRETE IN THE DIAPHRAGMS HAS BEEN IN PLACE A MINIMUM OF 10 DAYS OR AT THE DISCRETION OF THE ENGINEER. THIS TIME MAY BE SHORTENED IF THE CONCRETE HAS ATTAINED 80% OF THE SPECIFIED COMPRESSIVE STRENGTH.

Design	CEG		U.S. HIGHWAY 69 - McALESTER	
Drawn	KGL	KGL	TYPICAL CROSS SECTION	
Checked	ADT	JKJ	WADE WATTS AVENUE	
Approved	CEG		BRIDGE "Q" SOUTHBOUND, BRIDGE "R" NORTHBOUND	
Squad	WEA		JOB PIECE NO. 14999(04)	SHEET NO. B14