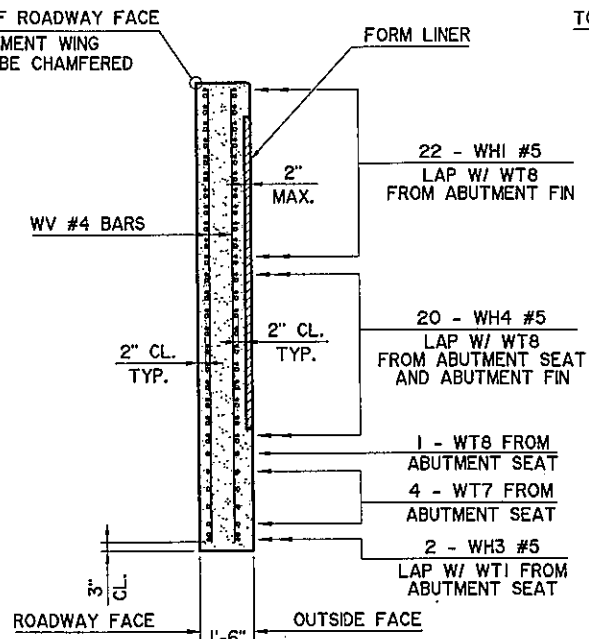
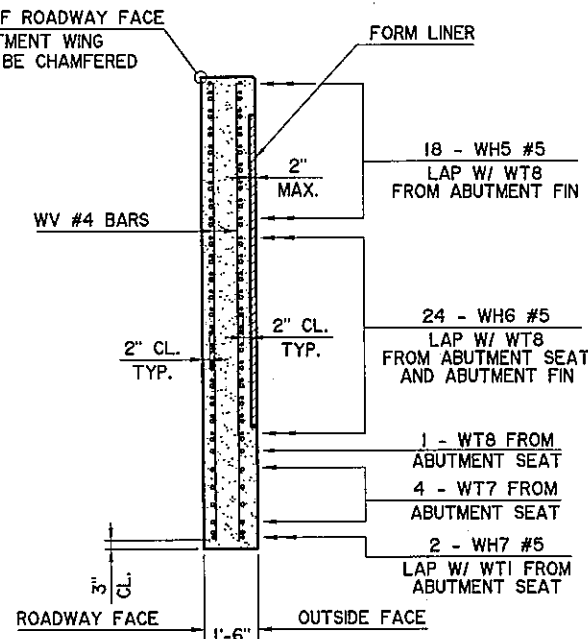


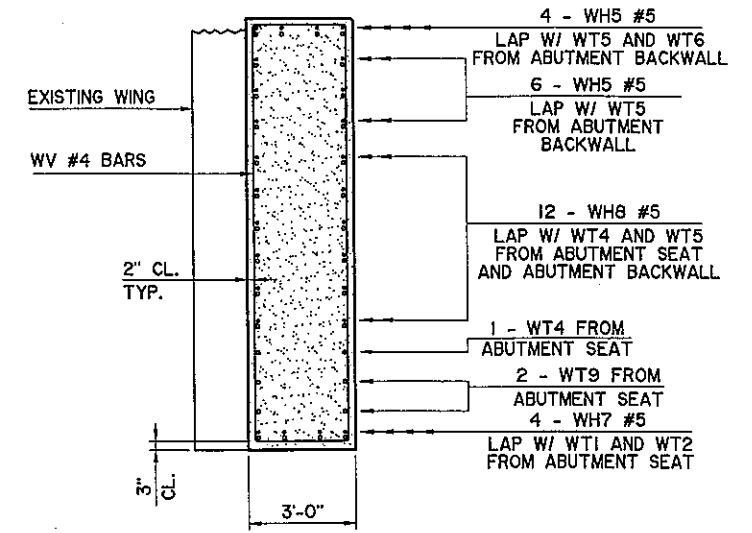
SECTION THRU WING AT
BACK FACE OF ABUTMENT SEAT
SECTION A



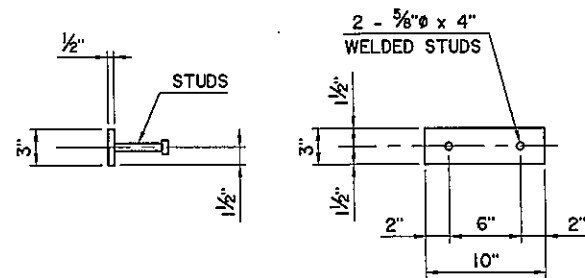
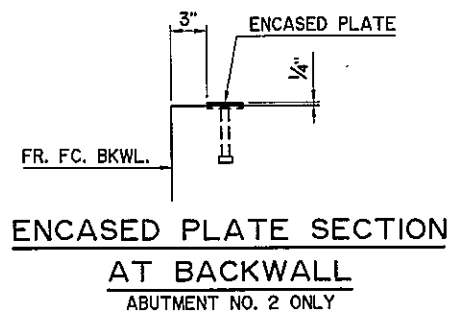
SECTION THRU WING AT
BACK FACE OF ABUTMENT SEAT
SECTION B



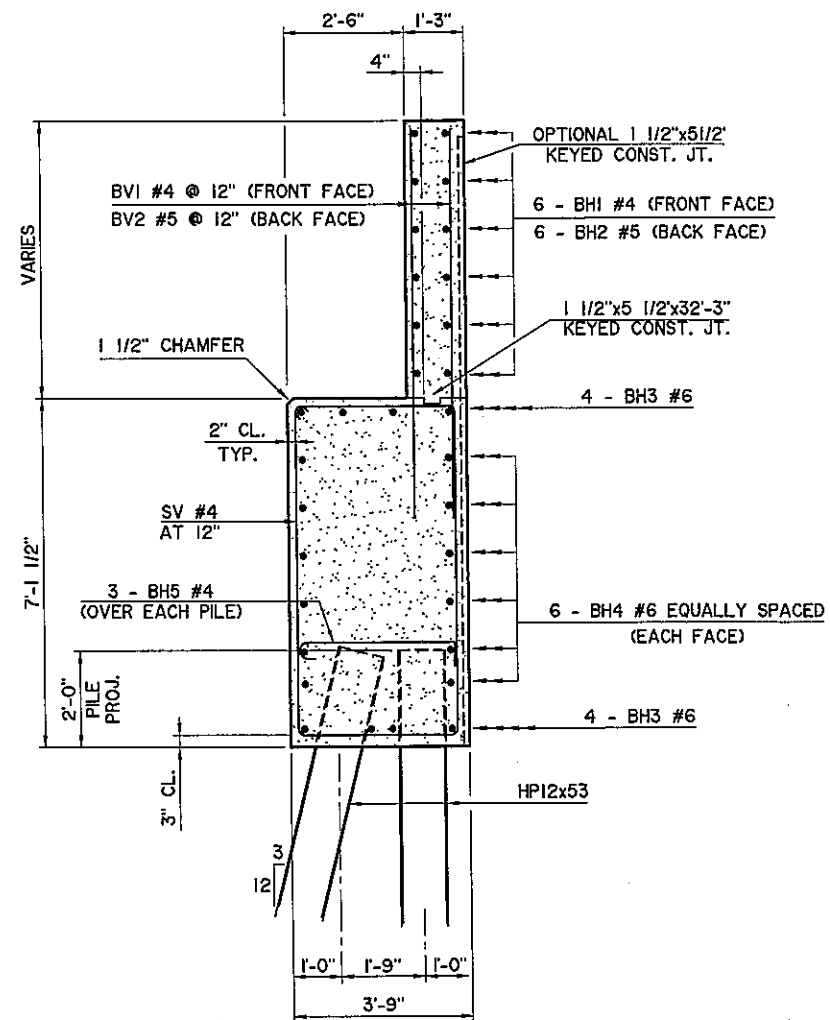
SECTION THRU WING AT
BACK FACE OF ABUTMENT SEAT
SECTION C



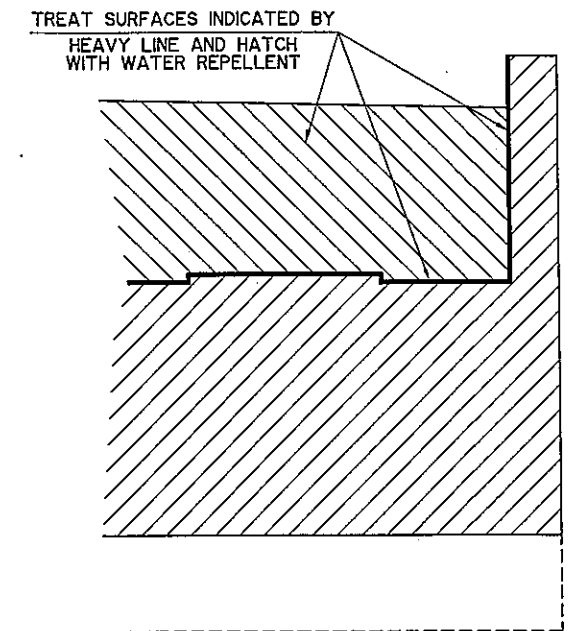
SECTION THRU WING AT
BACK FACE OF ABUTMENT SEAT
SECTION D



ENCASED PLATE DETAILS



TYPICAL SECTION THRU SEAT



WATER REPELLENT TREATMENT DETAIL

NOTE:
APPLY WATER REPELLENT TO BOTH NEW
AND EXISTING PORTIONS.

Design	CEG		U.S. HIGHWAY 69 - McALESTER ABUTMENT DETAILS WADE WATTS AVENUE BRIDGE "Q" AND BRIDGE "R" JOB PIECE NO. 14999(04)
Drawn	KGL	RJR	
Checked	ADT	JKJ	
Approved	CEG		
Squad	WEA		
			SHEET NO. B9