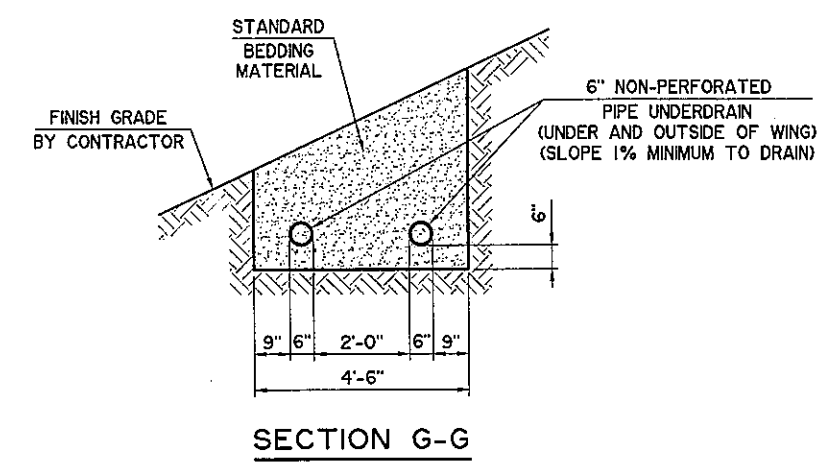
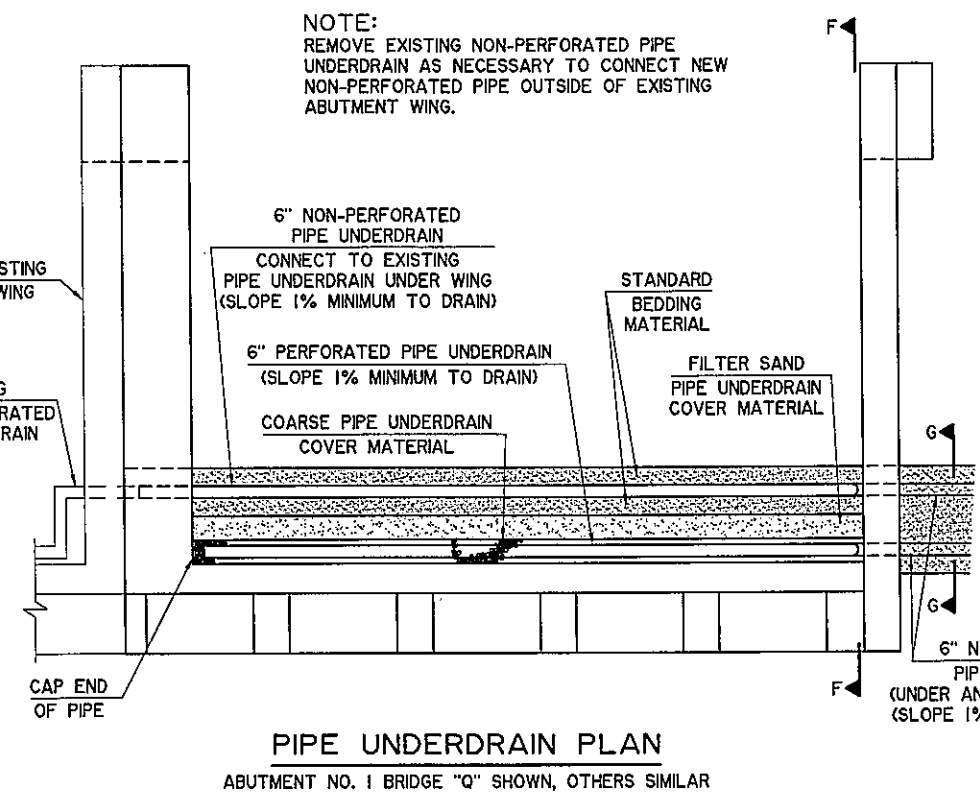
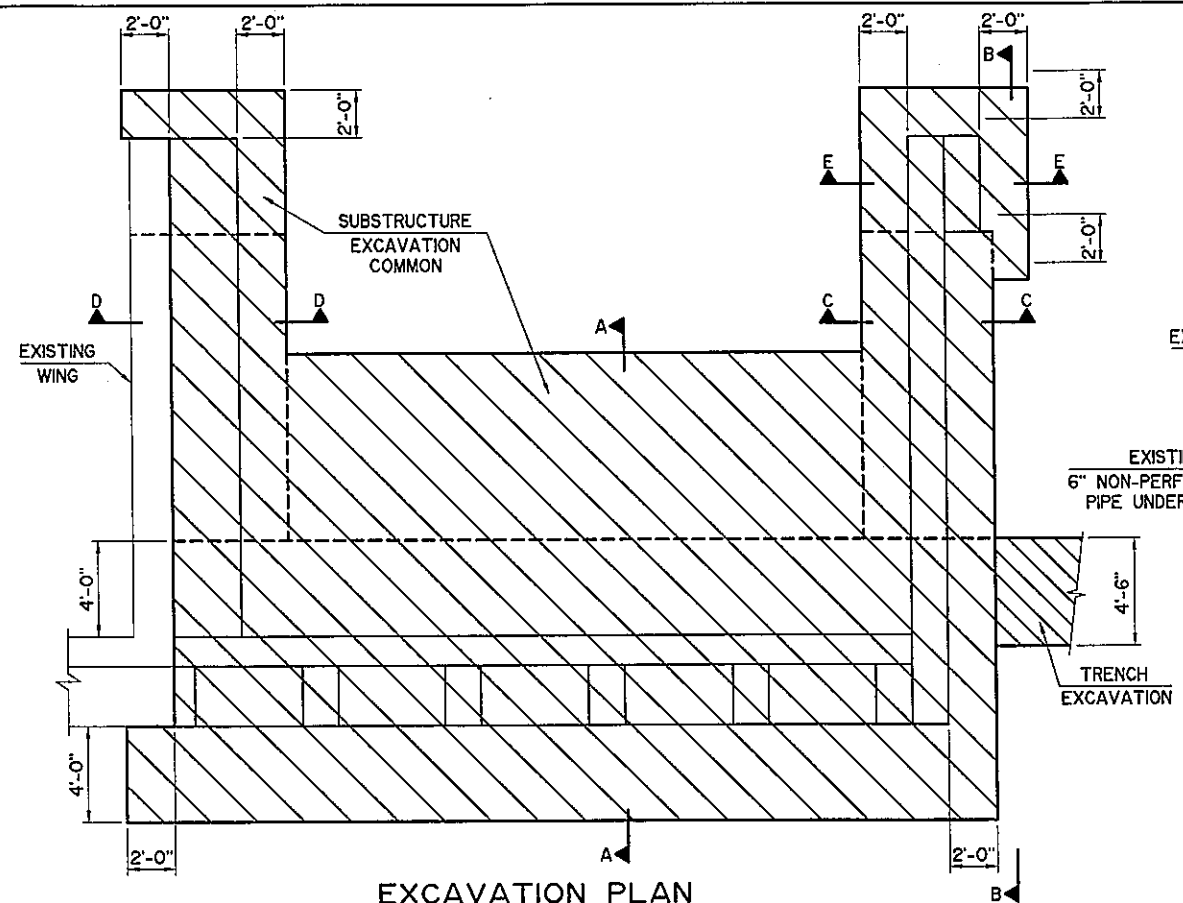
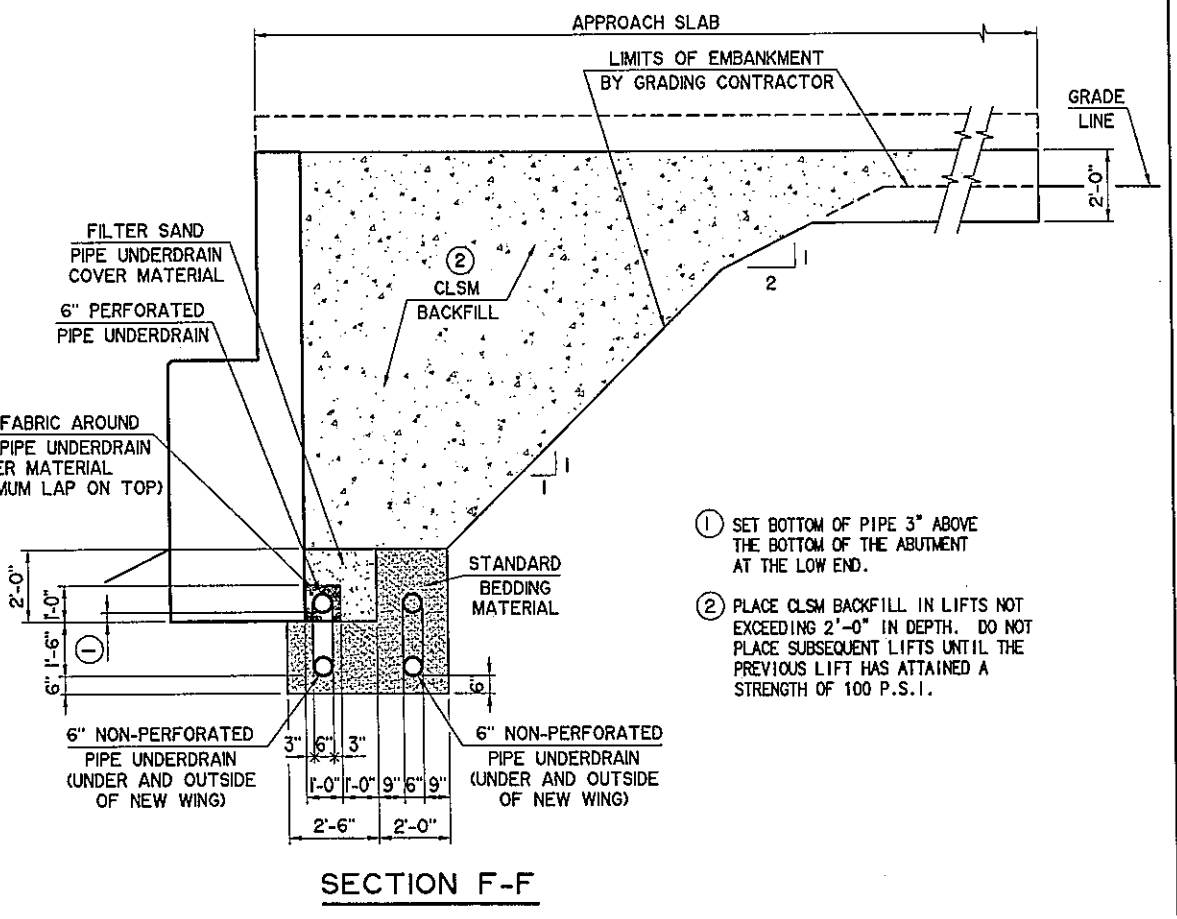
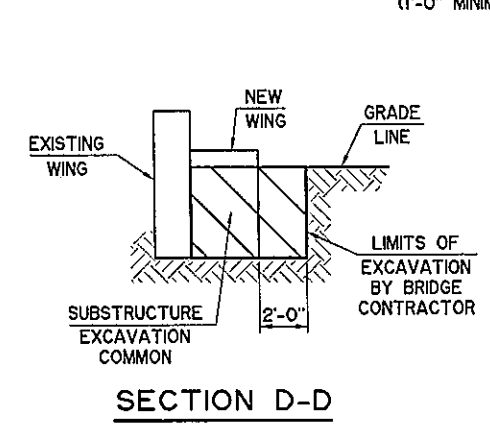
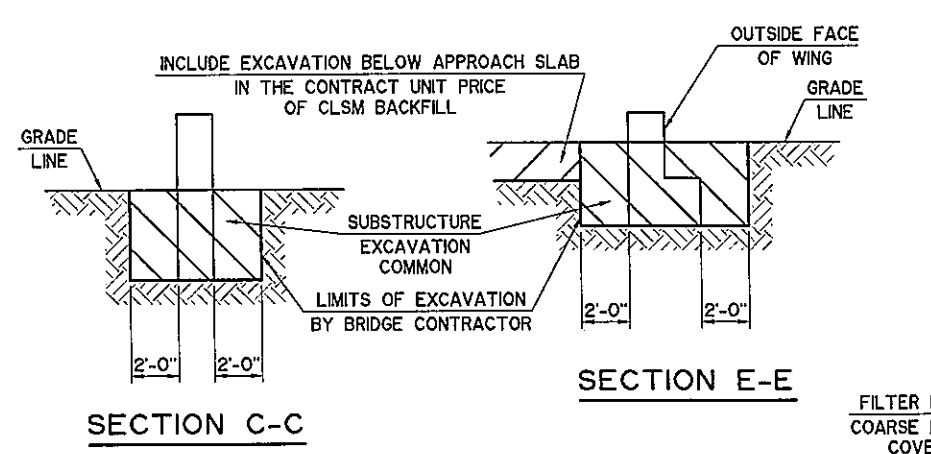
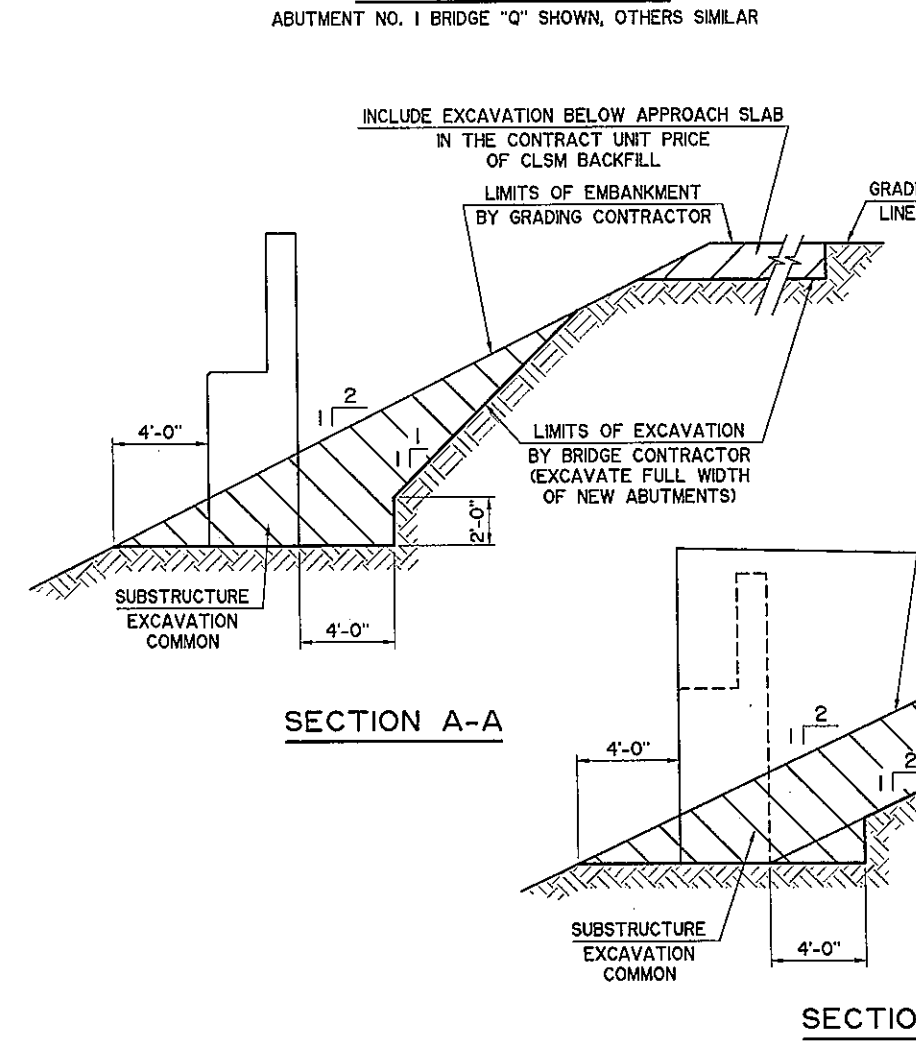


I:\Active\0403\A WYANDOTTEDWG\B5-SUB EXC-PIPE.dwg, 7/5/2016 3:24:01 PM, Howard



DO NOT PLACE CLSM BACKFILL UNTIL THE SUPERSTRUCTURE IS IN PLACE AND THE ABUTMENT WING CONCRETE HAS ATTAINED A STRENGTH OF 3000 P.S.I.



- SET BOTTOM OF PIPE 3" ABOVE THE BOTTOM OF THE ABUTMENT AT THE LOW END.
- PLACE CLSM BACKFILL IN LIFTS NOT EXCEEDING 2'-0" IN DEPTH. DO NOT PLACE SUBSEQUENT LIFTS UNTIL THE PREVIOUS LIFT HAS ATTAINED A STRENGTH OF 100 P.S.I.

Design	CEG		
Drawn	KGL	HEJ	
Checked	ADT	JKJ	
Approved	CEG		
Squad	WEA		

**U.S. HIGHWAY 69 - McALESTER**  
**SUBSTRUCTURE EXCAVATION AND PIPE UNDERDRAIN DETAILS**  
 WADE WATTS AVENUE  
 BRIDGE "Q" SOUTHBOUND, BRIDGE "R" NORTHBOUND  
 JOB PIECE NO. 14999(04) SHEET NO. B6