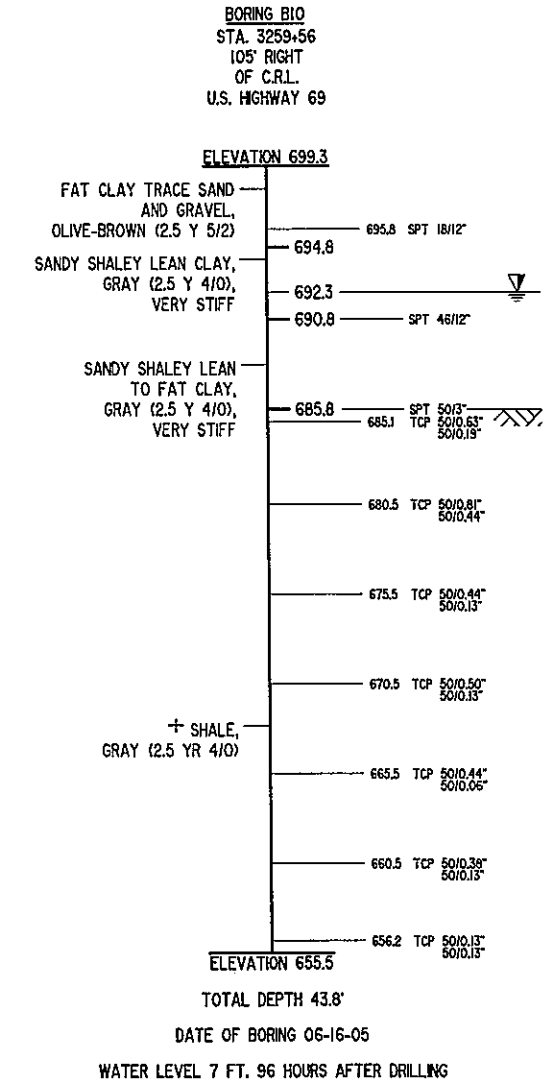
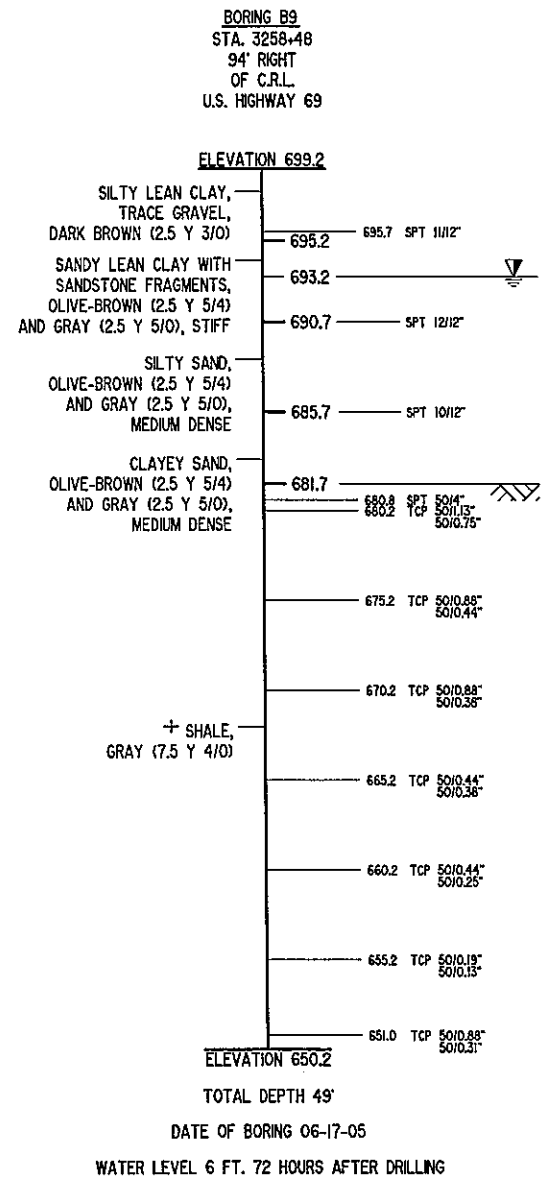
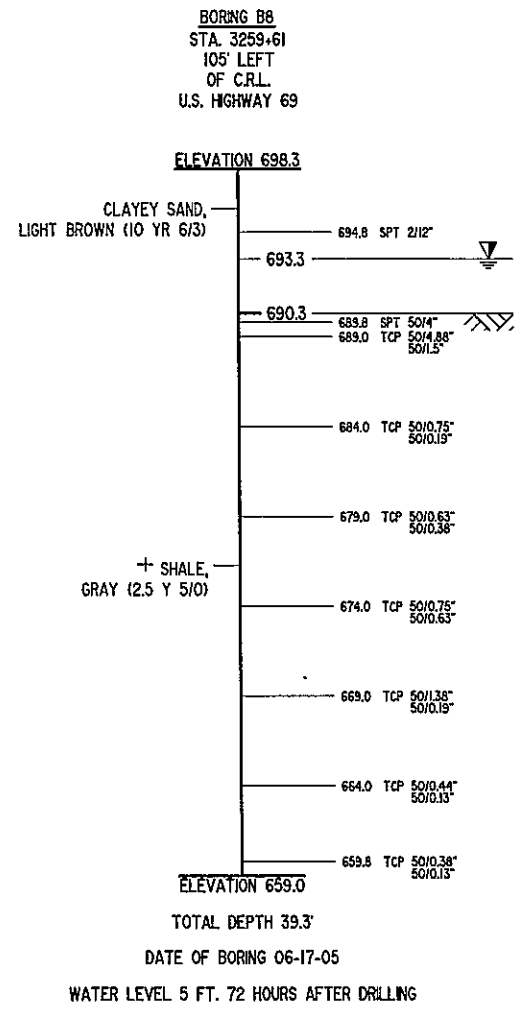
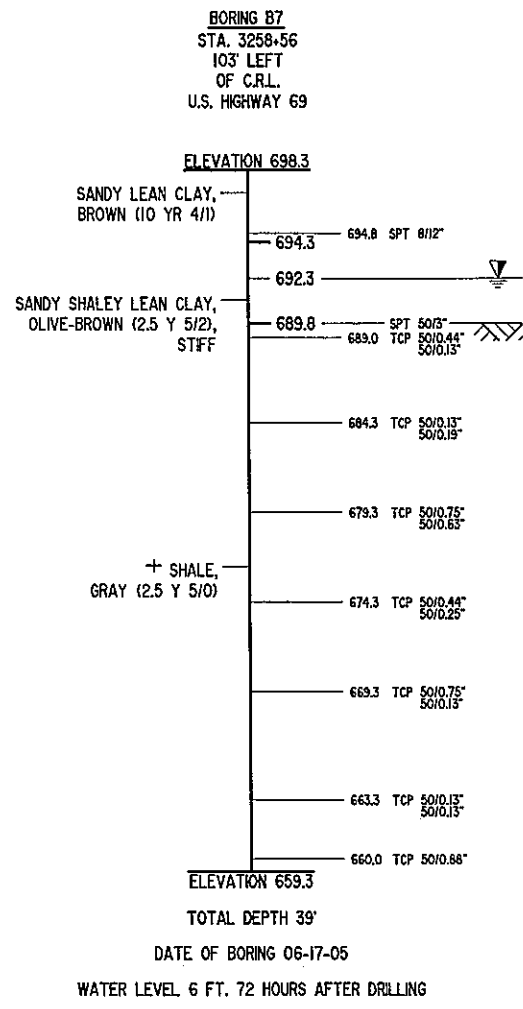


I:\Active\0403A WYANDOTTEDWG\B2-FDN RPT.dwg, 7/5/2016 3:22:27 PM, Howard



710  
700  
690  
680  
670  
660  
650  
640

WATER ELEVATIONS SHOWN WERE OBTAINED AT THE TIME BORINGS WERE DRILLED AND MAY FLUCTUATE THROUGHOUT THE YEAR

- NOTES:
- SPT DENOTES STANDARD PENETRATION TEST
  - TCP DENOTES TEXAS CONE PENETRATION TEST
  - ▽ DENOTES WATER ELEVATION AFTER DRILLING
  - ▨ INTERPRETED ROCK LINE
  - + CLASSIFICATION ESTIMATED FROM DISTURBED SAMPLES. CORE SAMPLES AND PETROGRAPHIC ANALYSIS MAY REVEAL OTHER ROCK TYPES.

USE INTERPRETED ROCK LINE FOR ESTIMATING PURPOSES ONLY

**GEOLOGICAL STATEMENT**

THE GEOLOGY OF PITTSBURG COUNTY IS VERY COMPLEX. THE BEDROCK AT THE PROJECT SITE CONSISTS OF THE SAVANNA UNIT OF PENNSYLVANIAN AGE. INFORMATION ON THE SAVANNA UNIT WAS TAKEN FROM ODOT'S "ENGINEERING CLASSIFICATION OF GEOLOGIC MATERIALS, DIVISION ONE". THE SAVANNA UNIT CONSISTS PREDOMINANTLY OF SHALE, WITH LESSER AMOUNTS OF SANDSTONE, AND A FEW THIN BEDS OF LIMESTONE AND SILTSTONE.

THE SHALE IS GRAY TO BLACK, FISSILE AND LOCALLY CLAYEY. THE SANDSTONE IS MODERATELY HARD TO HARD. THIS UNIT IS 500 TO 1,325 FEET THICK IN PITTSBURG COUNTY. THE TOPOGRAPHY OF THIS UNIT IS CHARACTERIZED BY PROMINENT RIDGES CAPPED BY THE SANDSTONES WITH SHALE VALLEYS.

NOTE:  
INFORMATION SHOWN ON THIS SHEET TAKEN FROM GEOTECHNICAL REPORT PREPARED BY TERRACON CONSULTANTS, INC. DATED AUGUST 24, 2005. A COPY OF THIS REPORT IS AVAILABLE FROM THE DEPARTMENT UPON REQUEST.

Design	TER		<b>U.S. HIGHWAY 69 - McALESTER</b> <b>FOUNDATION REPORT</b> <b>WADE WATTS AVENUE</b> BRIDGE "Q" SOUTHBOUND, BRIDGE "R" NORTHBOUND JOB PIECE NO. 14999(04) SHEET NO. B2
Drawn	KGL	KGL	
Checked	ADT	JKJ	
Approved	CEG		
Squad	WEA		