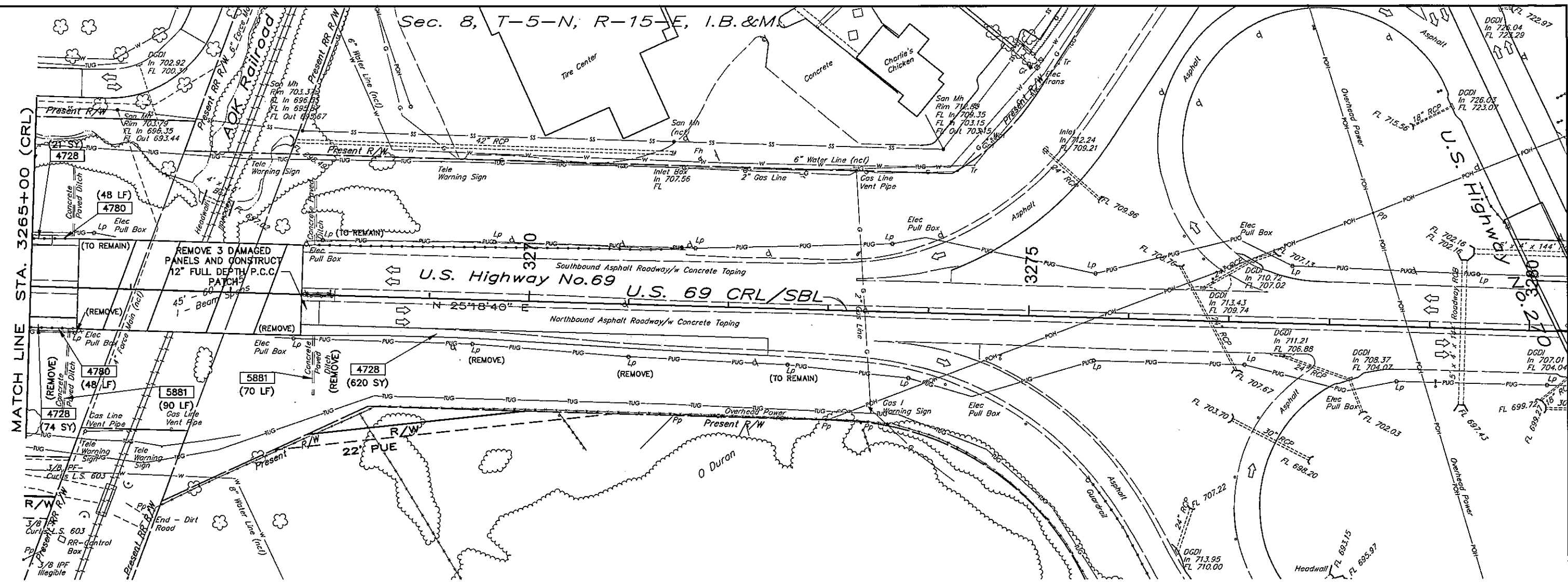
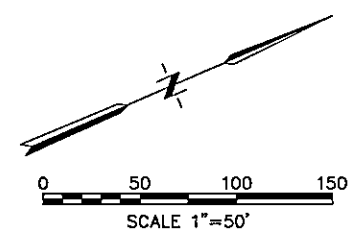


Sec. 8, T-5-N, R-15-E, I.B. & M.



MATCH LINE STA. 3265+00 (CRL)



PAY ITEMS

- 0291.X** REMOVAL OF HEADWALL ④
- 4726.X** REMOVAL OF CURB AND GUTTER ②
- 4727.X** REMOVAL OF CONCRETE PAVEMENT ①
- 4728.X** REMOVAL OF ASPHALT PAVEMENT
- 4766.X** REMOVAL OF CONCRETE DRIVEWAY ①
- 4780.X** REMOVAL OF GUARDRAIL
- 4792.X** REMOVAL OF CONCRETE SIDEWALK
- 5881.X** REMOVAL OF CONCRETE DITCH LINER ③

LEGEND

- //// REMOVE OR LEAVE PIPE INPLACE AND REMOVE PORTION OF STRUCTURE 3'-0" BELOW FINISH GRADE AND PUMP FULL OF CONTROLLED LOW STRENGTH MATERIAL (CLSM). CONTRACTORS OPTION.
- ▭ PAVEMENT REMOVALS

- ① INCLUDES REMOVAL OF ASPHALT OVERLAYS AND CURB.
- ② INCLUDES STAND UP CURB.
- ③ INCLUDES SLOPE WALLS AND DRAINS AT END OF BRIDGE.
- ④ REMOVAL OF HEADWALL IS PAID FOR BOX EXTENSIONS ONLY.

REMOVAL QUANTITIES

ITEM	DESCRIPTION	UNIT	QUANTITY SHEET 58
619(B) 0291	REMOVAL OF HEADWALL	EA	
619(B) 4726	REMOVAL OF CURB AND GUTTER	LF	
619(B) 4727	REMOVAL OF CONCRETE PAVEMENT	SY	50
619(B) 4728	REMOVAL OF ASPHALT PAVEMENT	SY	715
619(B) 4766	REMOVAL OF CONCRETE DRIVEWAY	SY	
619(B) 4780	REMOVAL OF GUARDRAIL	LF	96
619(B) 4792	REMOVAL OF SIDEWALK	SY	
619(B) 5881	REMOVAL OF CONCRETE DITCH LINER	LF	160
805(A) 8712	REMOVAL OF LIGHT POLE	EA	4



Survey	CKS	U.S. 69 - COMANCHE AVENUE	PITTSBURG COUNTY
Drawn	CKD	REMOVAL PLAN STA. 3265+00 TO STA. 3280+00	
Checked	CKE		
Approved			
Squad	C & K	JOB PIECE NO. 14999(04)	SHEET NO. 59