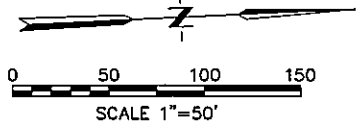
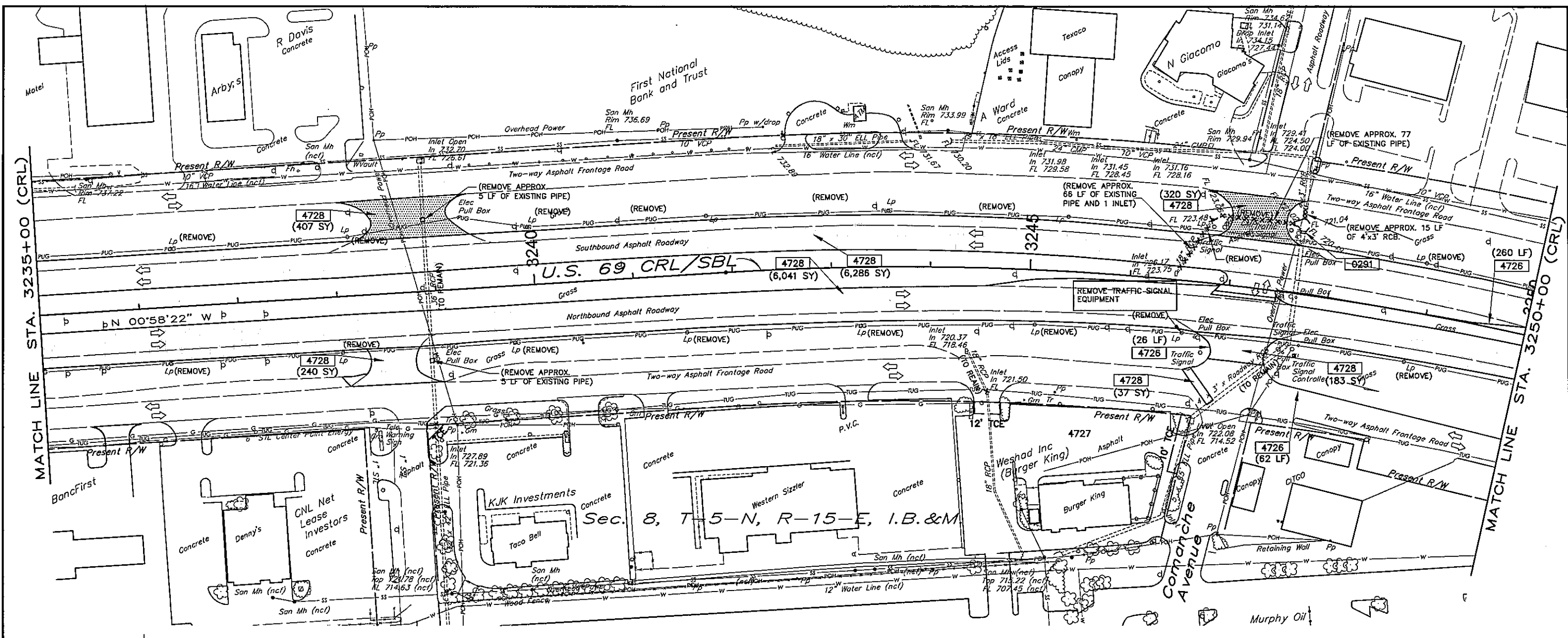


S:\Projects\DOT\TUS 69 Comanche\Acad\dwg\removal\0235-3250.dwg, 7/14/2016 11:01:04 AM



PAY ITEMS

- 0291 REMOVAL OF HEADWALL ④
- 4726 REMOVAL OF CURB AND GUTTER ②
- 4727 REMOVAL OF CONCRETE PAVEMENT ①
- 4728 REMOVAL OF ASPHALT PAVEMENT
- 4766 REMOVAL OF CONCRETE DRIVEWAY ①
- 4780 REMOVAL OF GUARDRAIL
- 4792 REMOVAL OF CONCRETE SIDEWALK
- 5881 REMOVAL OF CONCRETE DITCH LINER ③

LEGEND

- //// REMOVE OR LEAVE PIPE INPLACE AND REMOVE PORTION OF STRUCTURE 3'-0" BELOW FINISH GRADE AND PUMP FULL OF CONTROLLED LOW STRENGTH MATERIAL (CLSM). CONTRACTORS OPTION.
- ▭ PAVEMENT REMOVALS

- ① INCLUDES REMOVAL OF ASPHALT OVERLAYS AND CURB.
- ② INCLUDES STAND UP CURB.
- ③ INCLUDES SLOPE WALLS AND DRAINS AT END OF BRIDGE.
- ④ REMOVAL OF HEADWALL IS PAID FOR BOX EXTENSIONS ONLY.

REMOVAL QUANTITIES			
ITEM	DESCRIPTION	UNIT	QUANTITY THIS SHEET
619(B) 0291	REMOVAL OF HEADWALL	EA	1
619(B) 4726	REMOVAL OF CURB AND GUTTER	LF	348
619(B) 4727	REMOVAL OF CONCRETE PAVEMENT	SY	
619(B) 4728	REMOVAL OF ASPHALT PAVEMENT	SY	13,514
619(B) 4766	REMOVAL OF CONCRETE DRIVEWAY	SY	
619(B) 4780	REMOVAL OF GUARDRAIL	LF	
619(B) 4792	REMOVAL OF SIDEWALK	SY	
619(B) 5881	REMOVAL OF CONCRETE DITCH LINER	LF	
805(A) 8712	REMOVAL OF LIGHT POLE	EA	16



Survey	CKS	U.S. 69 - COMANCHE AVENUE PITTSBURG COUNTY
Drawn	CKD	
Checked	CKE	
Approved		
Squad	C & K	
REMOVAL PLAN		STA. 3235+00 TO STA. 3250+00
JOB PIECE NO. 14999(04)		