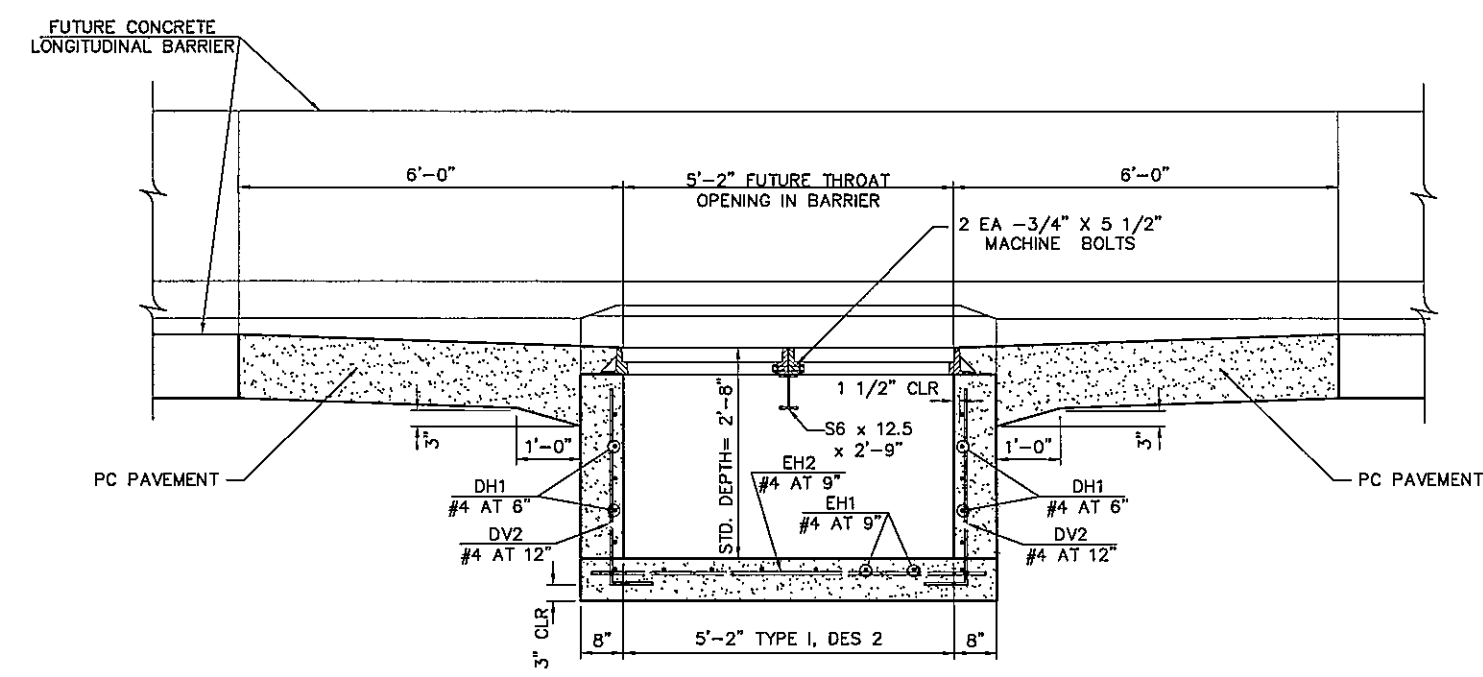
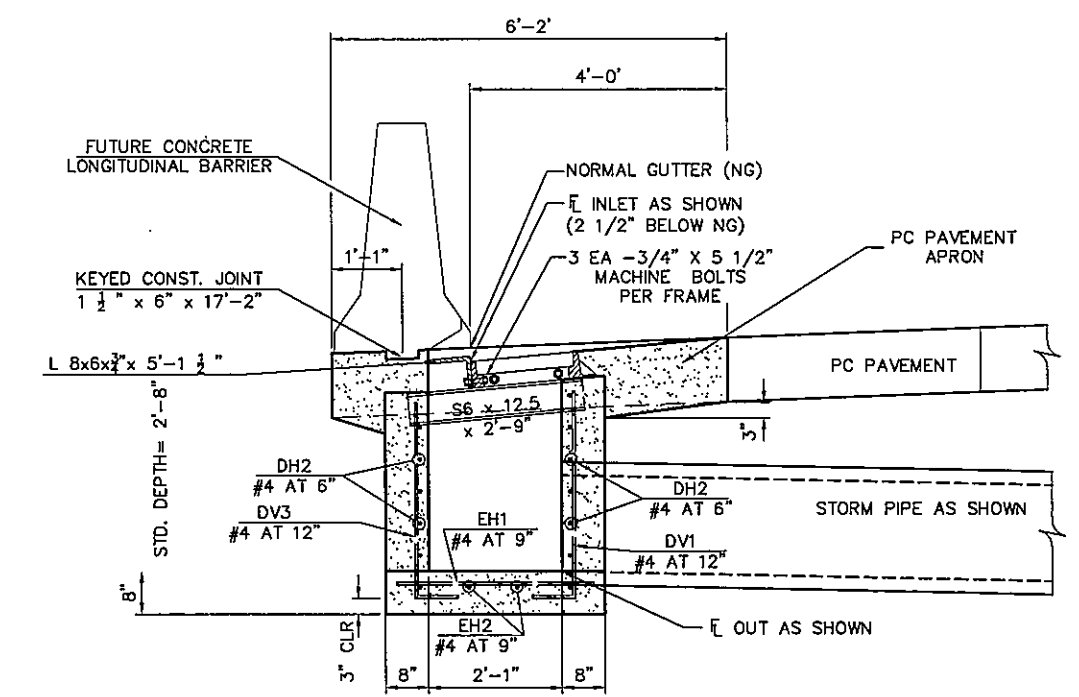
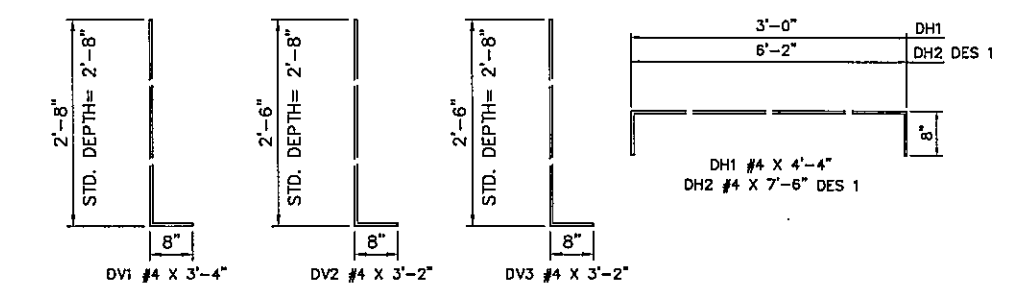


PLAN
INLET-LONGITUDINAL BARRIER-TYPE I, DES 2



SECTION A-A
INLET-LONGITUDINAL BARRIER-TYPE I, DES 2



SECTION B-B
INLET-LONGITUDINAL BARRIER-TYPE I

GENERAL NOTES

- ALL CONSTRUCTION AND MATERIAL REQUIREMENTS SHALL BE IN ACCORDANCE WITH THE 2009 OKLAHOMA STANDARD SPECIFICATIONS FOR HIGHWAY CONSTRUCTION.
CONCRETE (CLASS A) F'C = 3 KSI
REINFORCING STEEL FY = 60 KSI (ALL EPOXY COATED)
- EXPOSED CONCRETE EDGES SHALL HAVE A 3/4" CHAMFER SURFACES SHALL BE FINISHED IN ACCORDANCE WITH SECTION 509 OF THE STANDARD SPECIFICATIONS.
- ALL REINFORCING STEEL SHALL HAVE A 2" MINIMUM CLEAR COVER UNLESS OTHERWISE SHOWN.
- STANDARD SSIF-4 FRAMES AND STANDARD CIG-3 GRATES TO BE USED WITH THESE INLETS. COST OF THESE ITEMS SHALL BE INCLUDED IN THE COST OF THE COMPLETED INLET.
- THE INLET APRON MAY BE BUILT OF THE SIZE SHOWN ON THIS SHEET OR MAY BE PLACED INTEGRALLY WITH CONCRETE PAVEMENT, THE THICKNESS IN EITHER CASE SHALL BE THE SAME AS THE PAVEMENT. COST SHALL BE INCLUDED IN PRICE BID FOR P.C. CONCRETE PAVEMENT.
- THERE WILL BE NO DEDUCTION OF PAYMENT FOR P.C. CONCRETE PAVEMENT THRU THE EXTENT OF THE INLETS FRAMES AND GRATES.
- THE COST FOR CONCRETE AND REINFORCING STEEL SHALL BE INCLUDED IN THE AMOUNT BID FOR EACH INLET, INCLUDING ANY NECESSARY FOR ADDITIONAL INLET DEPTH. ADDITIONAL DEPTH SHALL BE INCLUDED IN THE PRICE BID FOR THE INLET.

ITEM	DESCRIPTION	UNIT
611(G) 5699	INLET - LONGITUDINAL BARRIER -TYPE I, DES. 2	EA



Design	CKS	U.S. 69 - COMANCHE AVENUE	PITTSBURG COUNTY
Drawn	CKD	INLET - LONGITUDINAL BARRIER - TYPE I	
Checked	CKE		
Approved			
Squad	C & K	JOB PIECE NO. 14992(04)	SHEET NO. 52

S:\Projects\DOT\TUS 69 Comanche\Acad\wg\ACAD PROJECT 1\US69\com692-Inlet-Longitudinal Barrier-Type I.dwg, 7/14/2016 10:59:33 AM