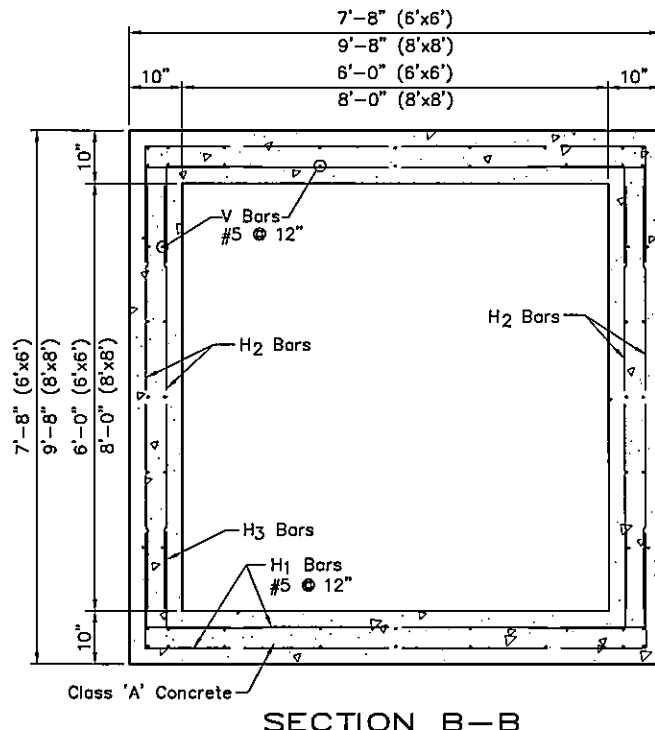


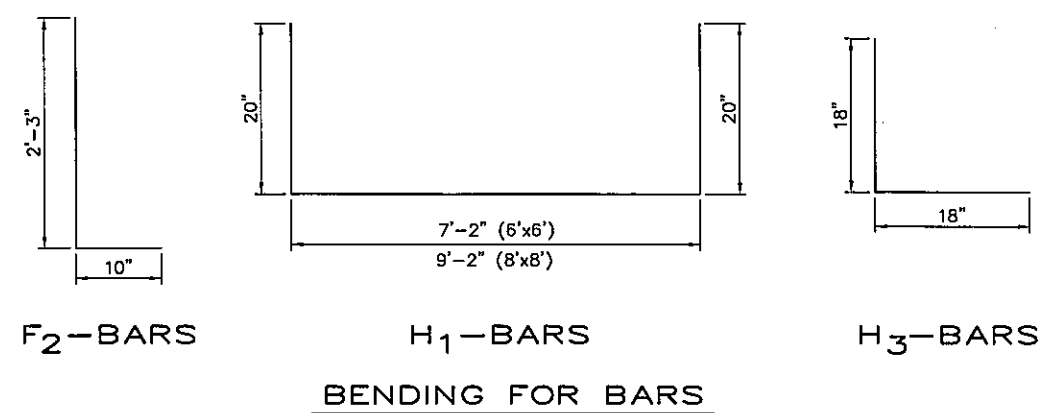
PLAN - CONCRETE JUNCTION BOX
(6'x6') and (8'x8')



SECTION B-B

RISER - CLEAR DIAMETER
29" FOR IN PAVEMENT INSTALLATION
31" FOR OUT OF PAVEMENT INSTALLATION

JUNCTION BOX HAS
INSIDE DIMENSIONS
AND HEIGHT AS
SHOWN ON PLANS.



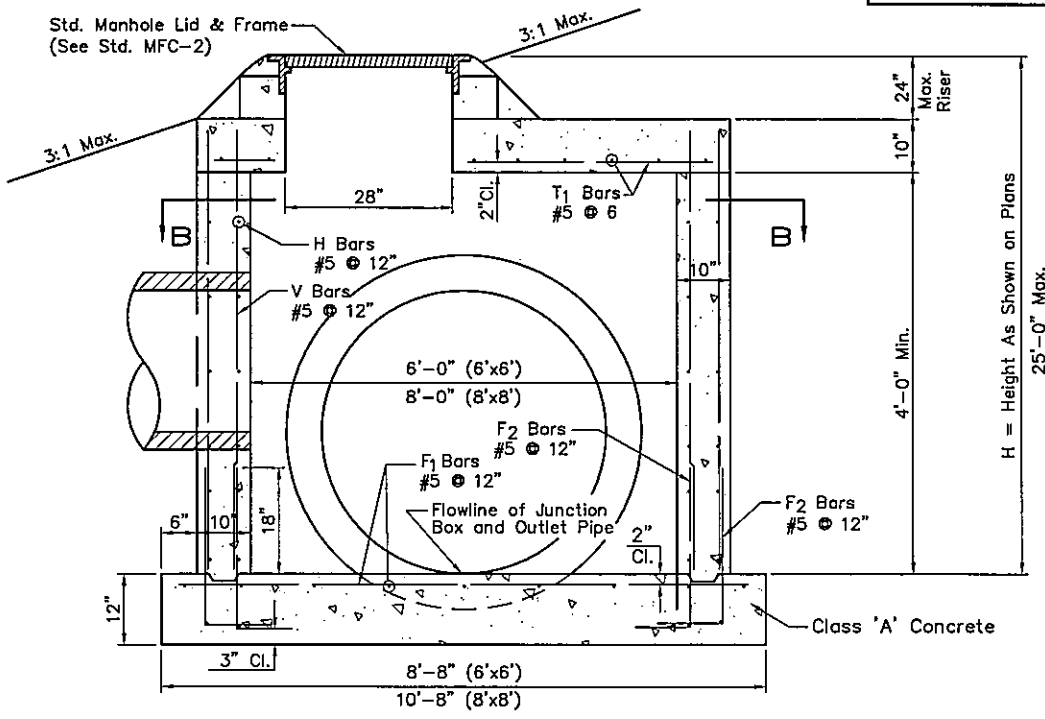
BASIS OF PAYMENT		
ITEM NO.	ITEM	UNIT
509(B) 0321	CLASS A CONCRETE	CY
509(C) 0322	CLASS A CONCRETE, SMALL STRUCTURES	CY
511(A) 0332	REINFORCING STEEL	LB

GENERAL NOTES:

- ALL CONSTRUCTION METHODS AND MATERIAL REQUIREMENTS SHALL BE IN ACCORDANCE WITH THE CURRENT STANDARD SPECIFICATIONS AND APPLICABLE SPECIAL PROVISIONS.
- FOR DETAILS OF FRAME AND COVER, SEE STANDARD MFC-4. INCLUDE IN COST OF COMPLETED STRUCTURE.
- MORTAR TO BE 1:2 PORTLAND CEMENT AND SAND. JOINTS TO BE SHOVED JOINTS COMPLETELY FILLED WITH MORTAR.
- ALL PIPE THAT PENETRATES THE WALL OF THE JUNCTION BOX SHALL BE OUTLINED BY 8 EA. #4 REBAR.
- ALL EXPOSED CONCRETE EDGES SHALL HAVE A 3/4" CHAMFER EDGE.

OPTIONAL PRECAST JUNCTION BOXES

- WHEN PRECAST STORM SEWER OR JUNCTION BOX UNITS ARE CALLED FOR ON THE PLANS OR SUBSTITUTED FOR CAST IN PLACE UNITS.
 - THE MATERIAL COMPONENTS SHALL MEET AASHTO DESIGNATION M 199 AND SHOP DRAWINGS SHALL BE SUBMITTED TO THE ODOT FOR APPROVAL.
 - ALL LIFT HOLES SHALL BE SEALED WITH FIRMLY PACKED MIXTURE OF CEMENT AND SAND GROUT.
 - ALL JOINTS BETWEEN JUNCTION BOX AND CONNECTING CONDUITS SHALL BE SEALED WITH APPROVED RUBBER RINGS.



SECTION A-A

DEDUCTIONS VOLUME FOR EACH PIPE OPENING	
PIPE DIAMETER	VOLUME CUBIC FEET
18"	2.40
24"	4.09
30"	6.22
36"	8.80
42"	11.82
48"	15.29
54"	19.20
60"	23.56
66"	28.37
72"	33.62
78"	39.31
84"	45.45
90"	52.04

REINFORCING STEEL FOR 5'-0" HEIGHT																		
SPECIAL JUNCTION BOX	F1 BARS STRAIGHT #5 @ 12"		F2 BARS BENT #5 @ 12"		V BARS STRAIGHT #5 @ 12"		H1 BARS BENT #5 @ 12"		H2 BARS STRAIGHT #5 @ 12"		H3 BARS BENT #5 @ 12"		T1 BARS STRAIGHT #5 @ 12"		T2 BARS STRAIGHT AS SHOWN		REINFORCING STEEL LB	REINFORCING STEEL PER ADD'L FT
	NO.	LENGTH	NO.	LENGTH	NO.	LENGTH	NO.	LENGTH	NO.	LENGTH	NO.	LENGTH	NO.	LENGTH	NO.	LENGTH		
6' X 6'	18	8'-2"	58	3'-1"	58	4'-10"	20	10'-6"	20	5'-10"	20	3'-0"	30	7'-2"	6	7'-0"	1300	129
8' X 8'	22	10'-2"	76	3'-1"	76	4'-10"	20	12'-6"	20	7'-10"	20	3'-0"	38	9'-2"	6	7'-0"	1780	164



Design	CKS	U.S. 89 - COMANCHE AVENUE	PITTSBURG COUNTY
Drawn	CKD	STRUCTURE H1 DETAILS	
Checked	CKE		
Approved			
Squad	C & K	JOB PIECE NO. 14998(04)	SHEET NO. 51

S:\Projects\ODOT\US 89 Comanche\ACAD PROJECT\1US89com01-Struct\H1Details.dwg, 7/14/2016 10:58:23 AM