

Peaceable Road, CRL			
POINT	STATION	COORDINATES NORTH	COORDINATES EAST
2027	168+00.000	582428.0366	2644110.8249
	N 88°53'48.0" E	410.000 ft	
2028	172+10.000	582435.9313	2644520.7492

Comanche Avenue, CRL			
POINT	STATION	COORDINATES NORTH	COORDINATES EAST
2045	175+00.000	584790.2424	2643947.7687
	S 73°25'35.8" E	382.107 ft	
2300	178+82.106	584681.2474	2644314.0002
	S 73°11'45.9" E	117.893 ft	
2301	180+00.000	584647.1647	2644426.8596
	S 73°35'14.9" E	297.999 ft	
2046	182+97.999	584562.9647	2644712.7158

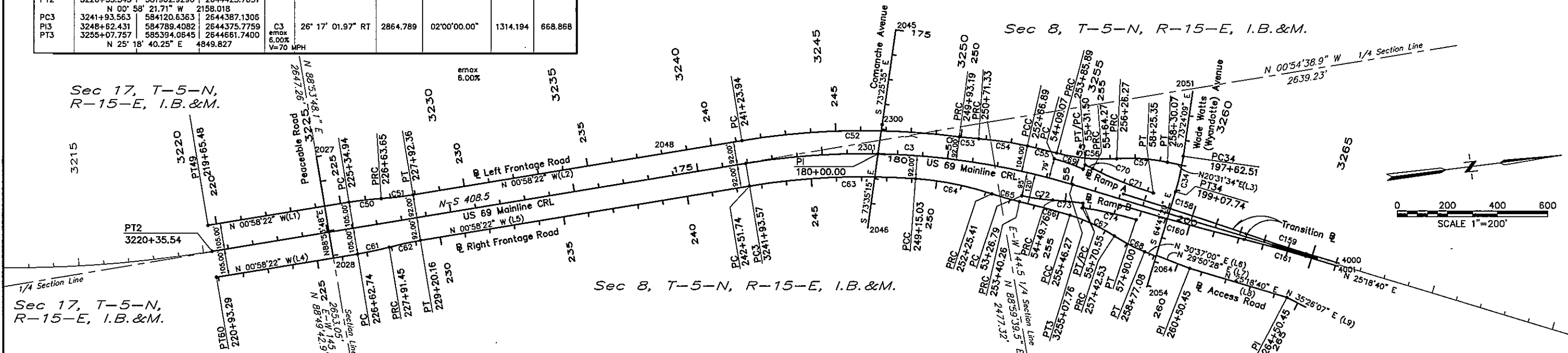
Wade Watts (Wyandotte) Avenue, CRL									
POINT	STATION	COORDINATES NORTH	COORDINATES EAST	CURVE NO.	DELTA	RADIUS	DOC	LENGTH	TANGENT
2051	195+00.571	585922.2314	2644363.0233						
	S 73° 24' 08.75" E	261.944							
PC34	197+62.514	585847.4078	2644614.0528						
PI34	198+35.268	585826.6259	2644683.7753						
PT34	199+07.741	585795.5211	2644749.5446						
	S 64° 41' 19.74" E	397.261							
2054	203+05.002	585625.6784	2645108.6684	C34	08° 42' 49.00" RT	954.930	06° 00' 00.00"	145.227	72.754
				emax 6.00%					
				V=40 MPH					
				LOW SPEED URBAN					

Transition @, Left Side									
POINT	STATION	COORDINATES NORTH	COORDINATES EAST	CURVE NO.	DELTA	RADIUS	DOC	LENGTH	TANGENT
PC158	3257+11.96	585588.4985	2644728.2524	C158					
PI158	3259+66.85	585818.9160	2644837.2253	emax 6.00%	02° 32' 54.42"	11459.156	00° 30' 00.00"	509.690	254.887
PT158	3262+21.65	586044.2603	2644956.3358	V=60 MPH					
PC159	3262+21.65	586044.2603	2644956.3358						
PI159	3263+49.10	586156.9324	2645015.8910	C159	02° 32' 54.42"	5729.578	01° 00' 00.00"	254.845	127.444
PT159	3264+76.50	586272.1412	2645070.3774	emax 6.00%					
				V=60 MPH	N 25° 18' 40.25" E				
4000	3266+11.96	586394.6017	2645128.2935						

US 69, CRL									
POINT	STATION	COORDINATES NORTH	COORDINATES EAST	CURVE NO.	DELTA	RADIUS	DOC	LENGTH	TANGENT
PT2	3220+35.545	581962.9290	2644423.7651						
	N 00° 58' 21.71" W	2158.018							
PC3	3241+93.563	584120.6363	2644387.1308						
PI3	3248+62.431	584789.4082	2644375.7759						
PT3	3255+07.757	585394.0645	2644661.7400	C3	26° 17' 01.97" RT	2864.789	02°00'00.00"	1314.194	668.868
	N 25° 18' 40.25" E	4849.827		emax 6.00%					
				V=70 MPH					

Transition @, Right Side									
POINT	STATION	COORDINATES NORTH	COORDINATES EAST	CURVE NO.	DELTA	RADIUS	DOC	LENGTH	TANGENT
PC160	3257+11.96	585588.8319	2644769.8384	C160					
PI160	3259+68.85	585799.2494	2644878.8093	emax 6.00%	02° 32' 54.42"	11459.156	00° 30' 00.00"	509.690	254.887
PT160	3262+21.65	586034.2845	2644977.4291	V=60 MPH					
PC161	3262+21.65	586034.2845	2644977.4291						
PI161	3263+49.10	586151.8020	2645026.7390	C161	02° 32' 54.42"	5729.578	01° 00' 00.00"	254.845	127.444
PT161	3264+76.50	586267.0108	2645081.2254	emax 6.00%					
				V=60 MPH	N 25° 18' 40.25" E				
4001	3266+11.96	586389.4713	2645139.1415						

Access Road @					
NUMBER	LENGTH	BEARING	STATION	NORTHING (Y)	EASTING (X)
L7	142.2286	N29°50'28.28"E	BP 259+08.22 EP 260+50.45	585681.7861 585805.1564	2644990.0337 2645060.8063
L8	400.0000	N25°18'40.21"E	BP 260+50.45 EP 264+50.45	585805.1564 586166.7561	2645060.8063 2645231.8200
L9	85.8102	N35°26'06.89"E	BP 264+50.45 EP 265+36.26	586166.7561 586236.6718	2645231.8200 2645281.5712



Left Frontage Road @					
NUMBER	LENGTH	BEARING	STATION	NORTHING (Y)	EASTING (X)
L1	569.4549	N0°58'21.71"W	BP 219+65.48 EP 225+34.94	581961.1465 582530.5194	2644318.7803 2644309.1132
C50	ARC LENGTH = 128.7098 RADIUS = 1273.2395 TANGENT = 64.4098 EXTERNAL = 1.6281	DELTA = 5°47'30.99" CHORD LENGTH = 128.6550 CHORD DIRECTION = N1°55'23.78"E	PC 225+34.94 PI 225+99.35 PT 226+63.65	582530.5194 582594.9199 582659.1019	2644309.1132 2644308.0198 2644313.4310
C51	ARC LENGTH = 128.7098 RADIUS = 1273.2395 TANGENT = 64.4098 EXTERNAL = 1.6281	DELTA = 5°47'30.99" CHORD LENGTH = 128.6550 CHORD DIRECTION = N1°55'23.78"E	PC 226+63.65 PI 227+28.06 PT 227+92.36	582659.1019 582723.2840 582787.6845	2644313.4310 2644318.8422 2644317.7488
L2	1331.5819	N0°58'21.72"W	BP 227+92.36 EP 241+23.94	582787.6845 584119.0745	2644317.7488 2644295.1439
C52	ARC LENGTH = 869.2526 RADIUS = 2956.7890 TANGENT = 437.7839 EXTERNAL = 32.2335	DELTA = 16°50'38.83" CHORD LENGTH = 866.1257 CHORD DIRECTION = N7°26'57.69"E	PC 241+23.94 PI 245+61.72 PT 249+93.19	584119.0745 584556.7953 584977.8900	2644295.1439 2644287.7120 2644407.4369
C53	ARC LENGTH = 78.1318 RADIUS = 1273.2395 TANGENT = 39.0781 EXTERNAL = 0.5996	DELTA = 3°30'57.35" CHORD LENGTH = 78.1195 CHORD DIRECTION = N1°04'48.43"E	PC 249+93.19 PI 250+32.37 PT 250+71.33	584977.8900 585015.4784 585053.6514	2644407.4369 2644418.1240 2644426.4858
C54	ARC LENGTH = 195.5678 RADIUS = 1273.2395 TANGENT = 97.9765 EXTERNAL = 3.7641	DELTA = 8°48'01.85" CHORD LENGTH = 195.3754 CHORD DIRECTION = N16°45'20.74"E	PC 250+71.33 PI 251+69.30 PT 252+66.89	585053.6514 585149.3587 585240.7317	2644426.4858 2644417.4505 2644482.8111
C55	ARC LENGTH = 118.9911 RADIUS = 2956.7890 TANGENT = 59.5075 EXTERNAL = 0.5963	DELTA = 2°17'47.79" CHORD LENGTH = 118.9911 CHORD DIRECTION = N22°18'15.61"E	PC 252+66.89 PI 253+26.40 PT 253+85.89	585240.7317 585296.2284 585350.8200	2644482.8111 2644504.2879 2644527.9713
C56	ARC LENGTH = 240.3814 RADIUS = 716.1972 TANGENT = 121.3319 EXTERNAL = 10.2048	DELTA = 19°13'49.85" CHORD LENGTH = 239.2547 CHORD DIRECTION = N13°50'14.58"E	PC 253+85.89 PI 254+07.22 PT 256+26.27	585350.8200 585482.1286 585583.1312	2644527.9713 2644576.2803 2644585.1932
C57	ARC LENGTH = 203.8012 RADIUS = 716.1972 TANGENT = 102.5938 EXTERNAL = 7.3109	DELTA = 16°18'44.74" CHORD LENGTH = 203.1142 CHORD DIRECTION = N12°22'27.02"E	PC 256+26.27 PI 257+28.87 PT 258+30.07	585583.1312 585685.4465 585781.5269	2644585.1932 2644592.7465 2644628.7195
L3	58.3715	N20°31'34.39"E	BP 258+30.07 EP 258+88.45	585781.5269 585836.1924	2644628.7195 2644649.1867

Right Frontage Road @					
NUMBER	LENGTH	BEARING	STATION	NORTHING (Y)	EASTING (X)
L4	569.4549	N0°58'21.71"W	BP 220+93.29 EP 226+62.74	581964.7125 582534.0842	2644528.7520 2644519.0829
C61	ARC LENGTH = 128.7100 RADIUS = 1273.2395 TANGENT = 64.4099 EXTERNAL = 1.6281	DELTA = 5°47'31.02" CHORD LENGTH = 128.6552 CHORD DIRECTION = N3°52'07.19"W	PC 226+62.74 PI 227+27.15 PT 227+91.45	582534.0842 582598.4848 582662.4482	2644519.0829 2644517.9895 2644510.4026
C62	ARC LENGTH = 128.7097 RADIUS = 1273.2395 TANGENT = 64.4097 EXTERNAL = 1.6281	DELTA = 5°47'30.98" CHORD LENGTH = 128.6550 CHORD DIRECTION = N3°52'07.21"W	PC 227+91.45 PI 228+55.86 PT 229+20.16	582662.4482 582726.4076 582790.8080	2644510.4026 2644502.8157 2644501.7223
L5	1331.5820	N0°58'21.72"W	BP 229+20.16 EP 242+51.74	582790.8080 584122.1981	2644501.7223 2644479.1174
C63	ARC LENGTH = 663.2929 RADIUS = 2772.7890 TANGENT = 333.2371 EXTERNAL = 19.9528	DELTA = 13°42'21.65" CHORD LENGTH = 661.7126 CHORD DIRECTION = N5°52'49.11"E	PC 242+51.74 PI 245+84.98 PT 249+15.03	584122.1981 584455.3872 584780.4288	2644479.1174 2644473.4603 2644546.9102
C64	ARC LENGTH = 310.3759 RADIUS = 1273.2395 TANGENT = 155.9610 EXTERNAL = 9.5164	DELTA = 13°58'00.80" CHORD LENGTH = 309.6080 CHORD DIRECTION = N19°43'00.38"E	PC 249+15.03 PI 250+71.00 PT 252+25.41	584780.4288 584932.5542 585071.8851	2644546.9102 2644581.2861 2644651.3629
C65	ARC LENGTH = 114.8458 RADIUS = 1273.2395 TANGENT = 57.4619 EXTERNAL = 1.2980	DELTA = 5°10'06.02" CHORD LENGTH = 114.8069 CHORD DIRECTION = N24°06'58.32"E	PC 252+25.41 PI 252+82.87 PT 253+40.26	585071.8851 585123.2197 585176.6714	2644651.3629 2644677.1818 2644698.2717
C66	ARC LENGTH = 206.0189 RADIUS = 2744.7894 TANGENT = 103.0578 EXTERNAL = 1.9341	DELTA = 4°18'01.86" CHORD LENGTH = 205.9706 CHORD DIRECTION = N23°40'56.74"E	PC 253+40.26 PI 254+43.31 PT 255+46.27	585176.6714 585272.5370 585365.2963	2644698.2717 2644736.0964 2644781.0033
C67	ARC LENGTH = 196.2591 RADIUS = 716.2202 TANGENT = 98.7482 EXTERNAL = 6.7754	DELTA = 15°42'00.80" CHORD LENGTH = 195.6456 CHORD DIRECTION = N33°40'58.08"E	PC 255+46.27 PI 256+45.02 PT 257+42.53	585365.2963 585454.1767 585528.0971	2644781.0033 2644824.0323 2644889.5073
C68	ARC LENGTH = 134.5483 RADIUS = 706.1988 TANGENT = 67.4784 EXTERNAL = 3.2165	DELTA = 10°54'58.53" CHORD LENGTH = 134.3449 CHORD DIRECTION = N36°04'29.21"E	PC 257+42.53 PI 258+10.01 PT 258+77.08	585528.0971 585578.6098 585636.6813	2644889.5073 2644934.2488 2644968.6150
L6	50.1459	N30°36'59.94"E	BP 258+77.08 EP 259+27.23	585636.6813 585679.6365	2644968.6150 2644994.1539

Ramp A @					
NUMBER	LENGTH	BEARING	STATION	NORTHING (Y)	EASTING (X)
C69	ARC LENGTH = 122.4305 RADIUS = 716.1972 TANGENT = 61.3648 EXTERNAL = 2.6241	DELTA = 9°47'39.99" CHORD LENGTH = 122.2815 CHORD DIRECTION = N28°16'43.94"E	PC 54+09.07 PI 54+70.44 PT 55+31.50	585337.5234 585393.8490 585445.2108	2644549.4566 2644573.8094 2644607.3891
L10	19.0000	N56°49'26.08"W	BP 55+31.50 EP 55+50.50	585445.2108 585455.6079	2644607.3891 2644591.4862
C70	ARC LENGTH = 32.7669 RADIUS = 735.1972 TANGENT = 16.3862 EXTERNAL = 0.1826	DELTA = 2°33'12.98" CHORD LENGTH = 32.7642 CHORD DIRECTION = N34°27'10.43"E	PC 55+50.50 PI 55+47.89 PT 55+64.27	585455.6079 585469.3282 585482.6250	2644591.4862 2644600.4529 2644610.0218
C71	ARC LENGTH = 261.0753 RADIUS = 1432.3945 TANGENT = 130.9002 EXTERNAL = 5.9688	DELTA = 10°26'34.84" CHORD LENGTH = 260.7141 CHORD DIRECTION = N30°30'29.50"E	PC 55+64.27 PI 56+95.17 PT 58+25.34	585482.6250 585588.8873 585707.2449	2644610.0218 2644686.4526 2644742.3764
Ramp B @					
NUMBER	LENGTH	BEARING	STATION	NORTHING (Y)	EASTING (X)
C72	ARC LENGTH = 122.9719 RADIUS = 716.1972 TANGENT = 61.6375 EXTERNAL = 2.6474	DELTA = 9°50'15.91" CHORD LENGTH = 122.8209 CHORD DIRECTION = N16°41'01.97"E	PC 53+26.79 PI 53+88.43 PT 54+49.76	585189.0202 585246.3282 585306.6707	2644676.2711 2644698.9542 2644711.5319
C73	ARC LENGTH = 120.7864 RADIUS = 1451.3945 TANGENT = 60.4281 EXTERNAL = 1.2674	DELTA = 4°46'05.54" CHORD LENGTH = 120.7515 CHORD DIRECTION = N14°08'56.78"E	PC 54+49.76 PI		