

RAILROAD NOTES (BRIDGE "S" AND "T")

NOTIFICATION OF WORK -

PROVIDE THE ARKANSAS-OKLAHOMA RAILROAD COMPANY AT LEAST 10 WORKING DAYS ADVANCE NOTICE, IN WRITING, BEFORE ANY WORK IS STARTED ON THE SITE. TO AVOID HAZARDS, THE ARKANSAS-OKLAHOMA RAILROAD COMPANY MAY HAVE A REPRESENTATIVE PRESENT, IF DEEMED NECESSARY, FOR THE PURPOSE OF INSPECTION AND THE ISSUANCE OF ANY APPROPRIATE INSTRUCTIONS FOR RAILROAD OPERATIONS DURING THE BRIDGE WIDENING/REHABILITATION OF U.S.69 OVER THE ARKANSAS-OKLAHOMA RAILROAD COMPANY'S TRACKS IN McALESTER, PITTSBURGH COUNTY.

NOTIFY:

MS. HEATHER WILLIAMS, GENERAL MANAGER
 ARKANSAS-OKLAHOMA RAILROAD COMPANY
 P.O. BOX 366
 WILBURTON, OK 74578
 PHONE: 918-465-0299
 EMAIL: HEATHER@AOKRR.COM

MR. HARVEY HUNTER, ROADMASTER
 ARKANSAS-OKLAHOMA RAILROAD COMPANY
 P.O. BOX 366
 WILBURTON, OK 74578
 PHONE: 918-465-0299

PROTECTION OF RAILROAD UNDER BRIDGE -

PROTECT THE RAILROAD TRACK BED DURING ALL CONSTRUCTION OPERATIONS.

PRIOR TO STARTING ANY WORK, SUBMIT TO THE RAILROAD REPRESENTATIVE FOR APPROVAL A PROPOSED METHOD OF PREVENTING DEBRIS FROM FALLING ON THE RAILROAD TRACK BED.

DO NOT LEAVE ANY SCAFFOLDING IN PLACE IN WORKING POSITION. REMOVE AND SET SCAFFOLDING A SAFE DISTANCE FROM ANY OPERATING RAILWAY LINE AT THE END OF EACH WORKDAY. MAINTAIN THE MINIMUM CLEARANCE AT ALL TIMES AS SHOWN ON THE "FALSEWORK CLEARANCE DIAGRAM" ON THIS SHEET.

FLAGGING AND INSURANCE -

PROVIDE FLAGGING AND INSURANCE AS SPECIFIED IN SECTION 107 OF THE STANDARD SPECIFICATIONS AND IN THE SPECIAL PROVISIONS FOR RAILROAD FLAGGING (SEE PROPOSAL FOR SPECIAL PROVISIONS) AND AS STATED IN THE ARKANSAS-OKLAHOMA RAILROAD COMPANY'S RIGHT OF ENTRY AGREEMENT. ARKANSAS-OKLAHOMA RAILROAD COMPANY, AT THEIR DISCRETION, SHALL PROVIDE FLAGGING FOR THE RAILROAD DURING CONSTRUCTION OPERATIONS.

THE CONTRACTOR IS REQUIRED TO REIMBURSE ARKANSAS-OKLAHOMA RAILROAD COMPANY FOR FLAGGING SERVICES PROVIDED.

FURNISH SATISFACTORY EVIDENCE TO THE STATE OF OKLAHOMA OF PROVIDING INSURANCE OF THE KINDS AND AMOUNTS AS SPECIFIED IN THE SPECIAL PROVISIONS FOR RAILROAD INSURANCE AND IN THE ARKANSAS-OKLAHOMA RAILROAD COMPANY'S RIGHT OF ENTRY AGREEMENT.

THE CONTRACTOR WILL BE REQUIRED TO ENTER INTO A RIGHT OF ENTRY AGREEMENT WITH THE ARKANSAS-OKLAHOMA RAILROAD COMPANY BEFORE THEY WILL BE ALLOWED ON THE RAILROADS RIGHT-OF-WAY.

PRE-WORK MEETING -

PRIOR TO WORKING ON THE ARKANSAS-OKLAHOMA RAILROAD COMPANY'S RIGHT-OF-WAY OR IN THE VICINITY OF THEIR TRACKS, CONTACT THE LOCAL ROADMASTER FOR THE ARKANSAS-OKLAHOMA RAILROAD COMPANY TO COORDINATE WORK. IT IS VITAL THAT CONTACT WITH THE ARKANSAS-OKLAHOMA RAILROAD COMPANY ROADMASTER IS MADE PRIOR TO ENTERING RAILROAD PROPERTY.

COORDINATION WITH RAILROAD -

CONDUCT CONSTRUCTION OPERATIONS IN A MANNER WHICH WILL NOT DELAY OR INTERFERE WITH TRAIN OPERATIONS. CONSTRUCTION ACTIVITY WITHIN 25 (TWENTY-FIVE) FEET OF ACTIVE TRACKS WILL REQUIRE A FLAGMAN TO BE PROVIDED BY THE ARKANSAS-OKLAHOMA RAILROAD COMPANY AT THE CONTRACTOR'S EXPENSE.

GIVE WRITTEN NOTICE TO THE ARKANSAS-OKLAHOMA RAILROAD COMPANY ROADMASTER A MINIMUM OF 30 (THIRTY) CALENDAR DAYS IN ADVANCE OF WHEN FLAGGING IS REQUIRED.

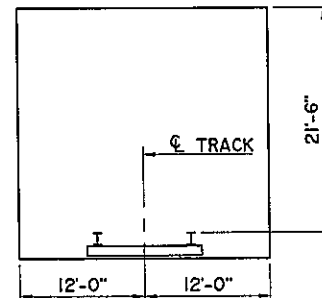
OBTAIN SPECIAL PERMISSION FROM THE ARKANSAS-OKLAHOMA RAILROAD COMPANY BEFORE MOVING ANY EQUIPMENT OR OTHER OBJECT WHICH COULD MAKE THE TRACK IMPASSABLE IF IT FELL WITHIN THE AREA SHOWN ON THE "FALSEWORK CLEARANCE DIAGRAM" ON THIS SHEET.

RAILROAD FLAGGERS, PROTECTIVE SERVICES, AND PROTECTIVE DEVICES WILL BE REQUIRED, BUT NOT LIMITED TO, EVENTS WHEN:

- WORK ACTIVITIES ARE WITHIN 25 (TWENTY-FIVE) FEET OF THE TRACK, MEASURED FROM THE TRACK CENTERLINE.
- ACTIVITIES ARE OVER OR UNDER THE TRACK.
- CRANES OR SIMILAR EQUIPMENT WILL NOT BE POSITIONED WHERE THEY COULD FOUL THE TRACK IF THEY TIPPED OVER OR EXPERIENCED SOME OTHER CATASTROPHIC EVENT.
- IN THE OPINION OF THE ARKANSAS-OKLAHOMA RAILROAD COMPANY:
 - 1) IT IS NECESSARY TO SAFEGUARD THE ARKANSAS-OKLAHOMA RAILROAD COMPANY PROPERTY, EMPLOYEES, TRAINS, ENGINES AND FACILITIES.
 - 2) WHEN ANY EXCAVATION IS PERFORMED BELOW THE BOTTOM OF THE ELEVATIONS AND TRACK OR OTHER ARKANSAS-OKLAHOMA RAILROAD COMPANY FACILITIES MAY BE SUBJECT TO MOVEMENT OR SETTLEMENT.
 - 3) WHEN WORK IN ANY WAY INTERFERES WITH SAFE OPERATION OF TRAINS AND TIMETABLE SPEEDS.
 - 4) WHEN ANY HAZARD IS PRESENTED TO RAILROAD TRACK, SIGNALS, COMMUNICATIONS, ELECTRICAL, OR OTHER FACILITIES EITHER DUE TO PERSON, MATERIAL, EQUIPMENT, OR BLASTING IN THE AREA.

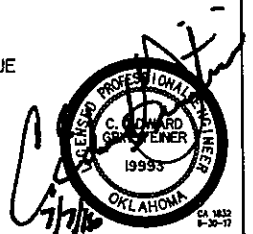
RAIL TRAFFIC -

THE ARKANSAS-OKLAHOMA RAILROAD COMPANY HAS 2 TRAINS PER DAY AT 25 MPH ON THE HOWE SUBDIVISION.



FALSEWORK CLEARANCE DIAGRAM

NOTE:
 CLEARANCE OF FALSEWORK REQUIRED BY ARKANSAS-OKLAHOMA RAILROAD COMPANY FOR OPERATION DURING CONSTRUCTION. HORIZONTAL DIMENSIONS SHOWN ARE MEASURED AT RIGHT ANGLES TO CENTERLINE OF TRACK. VERTICAL DIMENSION SHOWN IS PERPENDICULAR TO PLANE OF TOP OF RAILS.



Design	CEG		U.S. HIGHWAY 69 - McALESTER
Drawn	KGL	HEJ	
Checked	ADT		
Approved	CEG		
Squad	WEA		
RAILROAD NOTES BRIDGE "S" AND BRIDGE "T"			
JOB PIECE NO. 14999(04)			SHEET NO. 12