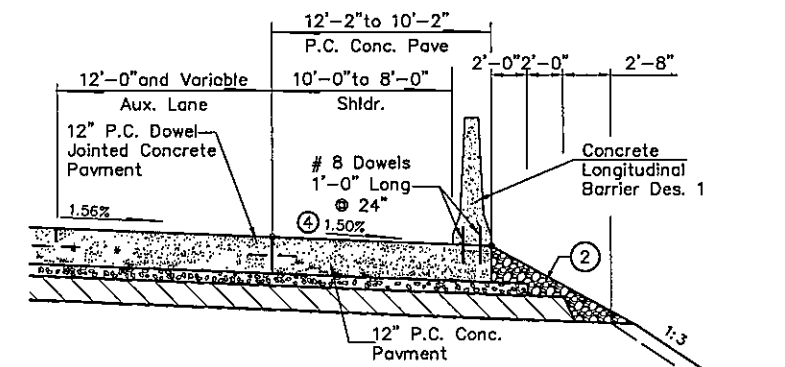
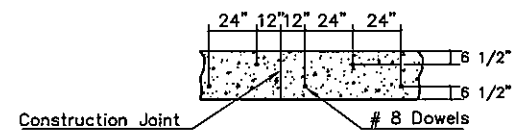


TYPICAL HALF SECTION NO. 4

CRL U.S. 69 Sta 3259+96.23 to Sta 3265+20.00 LT
 CRL U.S. 69 Sta 3259+96.23 to Sta 3265+50.65 RT
 CRL U.S. 69 Sta 3267+74.83 to Sta 3272+41.00 RT



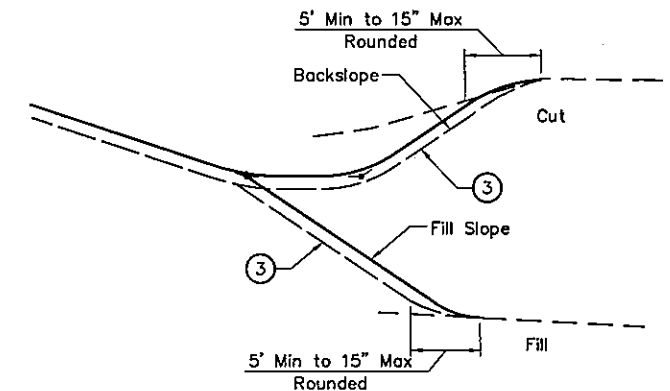
RIGHT SHOULDER DETAIL FOR TYPICAL HALF SECTION NO. 3



DOWEL PLACEMENT LAYOUT FOR CONCRETE LONGITUDINAL BARRIER (PLAN VIEW)

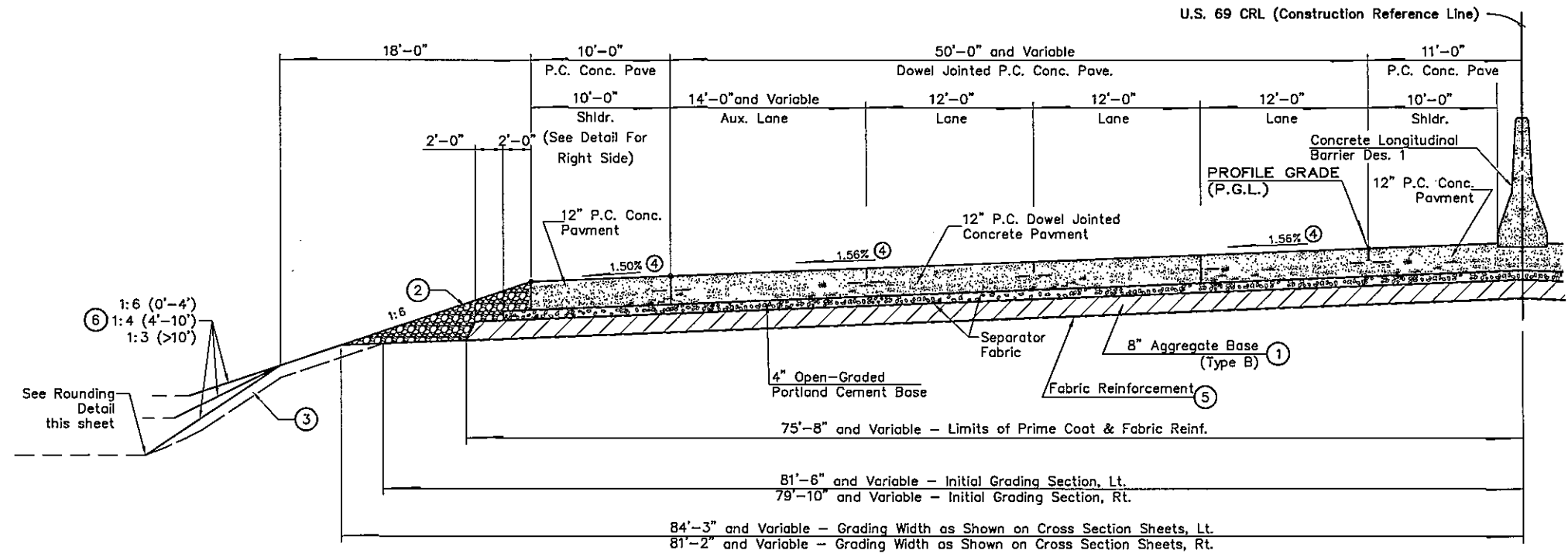
CONCRETE LONGITUDINAL BARRIER NOTE

THE CONTRACTOR MAY INSTALL A 1" DEEP NOTCH IN PAVEMENT AS SHOWN IN ODOT STD. CLB-1 ON CENTER BARRIER WALL ONLY AS AN OPTION TO INSTALLING THE DOWEL AS SHOWN. DOWEL BARS ARE REQUIRED ON THE OUTSIDE SHOULDER. REINFORCING STEEL FOR DOWEL BARS SHALL BE GRADE 60, EPOXY COATED. COST SHALL BE INCLUDED IN THE UNIT PRICE BID FOR CONCRETE LONGITUDINAL BARRIER DES. 1.



TOP OF CUT - TOE OF FILL ROUNDING DETAIL

INTERSECTION OF CUT AND FILL SLOPES WITH THE GROUND LINE ARE TO BE ROUNDED AS A PART OF THE FINISHING OPERATIONS. ROUNDED SHALL BE 5' MINIMUM FOR SMALLER CUTS AND FILLS, TO 15' MAXIMUM FOR LARGER CUTS AND FILLS OR AS DESIGNATED BY THE ENGINEER. COST OF ROUNDED TO BE INCLUDED IN THE PRICE BID FOR OTHER ITEMS OF WORK.



TYPICAL HALF SECTION NO. 3

CRL U.S. 69 STA 3257+11.96 TO STA 3558+25.35

- ① PRIME COAT TO BE APPLIED FULL WIDTH TO THE TOP AND BOTTOM OF THE AGGREGATE BASE.
- ② BACKFILL NOTE: THIS AREA TO BE BACKFILLED WITH TBSC TYPE "E" AND COMPACTED AS PART OF THE FINISHING OPERATIONS IN A MANNER APPROVED BY THE ENGINEER.
- ③ TOPSOIL NOTE: THE CONTRACTOR SHALL STRIP ALL OF THE AVAILABLE TOPSOIL, STOCKPILE IT, AND PLACE IT BACK ON THE SECTION IN ACCORDANCE WITH SECTION 205 OF THE STANDARD SPECIFICATION. RESERVED TOPSOIL SHALL BE SPREAD FIRST ON THE COMPLETED SLOPES OF THE CUT SECTIONS AND THE REMAINDER ON COMPLETED FILL SLOPES OR OTHER PRIORITY AREAS LOCATED BY THE ENGINEER. ALL ADDITIONAL COSTS ASSOCIATED WITH OPERATIONS SHALL BE INCLUDED IN THE PAY ITEM SALVAGED TOPSOIL, LUMP SUM.
- ④ THE GRADING LINE AS SHOWN ON THE TYPICAL AND CROSS SECTIONS IS TO THE TOP OF THE TOPSOIL. EARTHWORK QUANTITIES WERE NOT ADJUSTED FOR SALVAGE AND THE TOPSOIL QUANTITY IS INCLUDED IN THE MASS LINE BALANCE.
- ⑤ SEE TRANSITIONS DETAILS ON SHEET NO. 3.
- ⑥ FABRIC REINFORCEMENT: GOETEXTILE TO MEET ODOT SPEC. 712.05.
- ⑦ DISTANCE MEASURED VERTICALLY FROM THE EDGE OF FINISHED SHOULDER.

PROFESSIONAL ENGINEER
 ROBIN D. SEWELL
 16173
 7/8/16
 OKLAHOMA

Survey	CKS	U.S. 69 - COMANCHE AVENUE	PITTSBURG COUNTY
Drawn	CKD	TYPICAL SECTIONS	
Checked	CKE		
Approved			
Squad	C & K		
		JOB PIECE NO. 14999(04)	SHEET NO. 4

S:\Projects\ODOT\US 69 Comanche\Acad\dwg\ACAD PROJECT 1\US69com04-US69 typical.dwg, 7/14/2016 10:45:54 AM