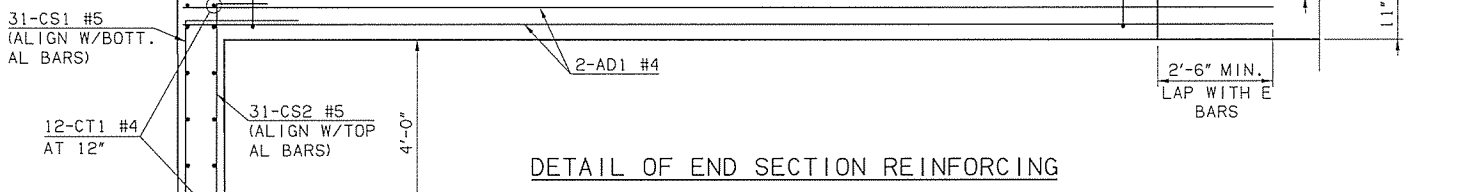


HANDRAIL LOCATION

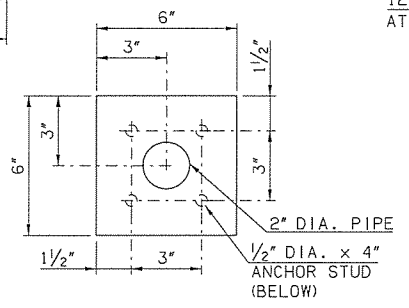
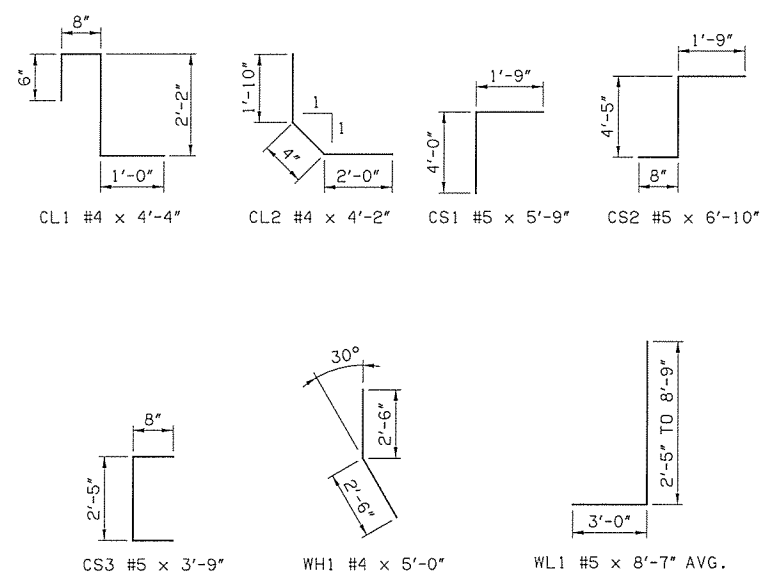


DETAIL OF END SECTION REINFORCING

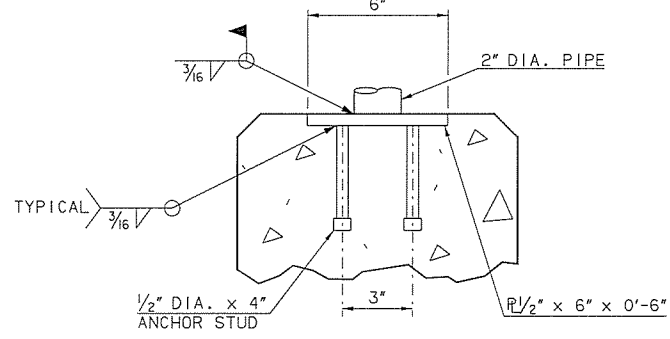
HALF APRON REINFORCING

HALF APRON PLAN

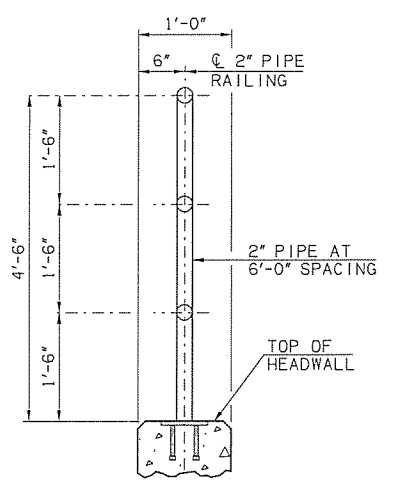
APRON SECTION



PLAN AT RAIL BASE PLATE



SECTION AT RAIL BASE PLATE



HANDRAIL AT HEADWALL

DETAILS OF 2" PIPE RAILING

BAR LIST - END SECTION

MARK	SIZE	QTY	FORM	LENGTH	REMARKS
AD1	# 4	4	STR	25'-4"	
AL1	# 4	18	STR	23'-4"	
AL2	# 4	44	STR	10'-9" AVG.	2'-6" TO 19'-0"
AT1	# 4	42	STR	19'-1" AVG.	8'-0" TO 30'-3"
CH1	# 4	5	STR	7'-1"	
CL1	# 4	9	BNT.	4'-4"	
CL2	# 4	9	BNT.	4'-2"	
CS1	# 5	31	BNT.	5'-9"	
CS2	# 5	31	BNT.	6'-10"	
CS3	# 5	4	BNT.	3'-9"	
CT1	# 4	12	STR	30'-3"	
WH1	# 4	16	BNT.	5'-0"	
WH2	# 4	12	STR	11'-2" AVG.	4'-1" TO 18'-3"
WH3	# 4	4	STR	22'-0"	
WL1	# 5	46	BNT.	8'-7" AVG.	5'-5" TO 11'-9"

QUANTITIES

ITEM	UNIT	TOTAL
CLASS AA CONCRETE	CY	26.00
REINFORCING STEEL	LB	2560.00
2" PIPE RAILING	LF	52.00

DESIGN DATA

MATERIAL  
 CLASS AA CONCRETE F'C = 4 KSI  
 REINFORCING STEEL F<sub>y</sub> = 60 KSI

LOADING  
 HL-93 OR OKLAHOMA OVERLOAD TRUCK

DESIGN  
 AASHTO LRFD BRIDGE DESIGN SPECIFICATIONS, 7TH EDITION

GENERAL NOTES

- ALL CONCRETE EDGES WILL HAVE A 1/2" CHAMFER UNLESS OTHERWISE SHOWN OR NOTED. ALL CHAMFER STRIPS WILL BE SIZED LUMBER.
- ALL REINFORCING STEEL WILL HAVE A 2" MINIMUM CLEAR COVER UNLESS OTHERWISE SHOWN.
- FOR E BARS, REFER TO ODOT STANDARD RCB-C1-6(2-14)

Design	
Drawn	
Checked	
Approved	
Squad	OLSSON ASSOCIATES

WESTERN ROAD	PAYNE COUNTY
<b>DRAINAGE DETAILS (01)</b>	
STRUCTURE NO. 28	
Project No.	315951041
Sheet No.	34