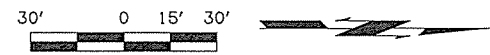
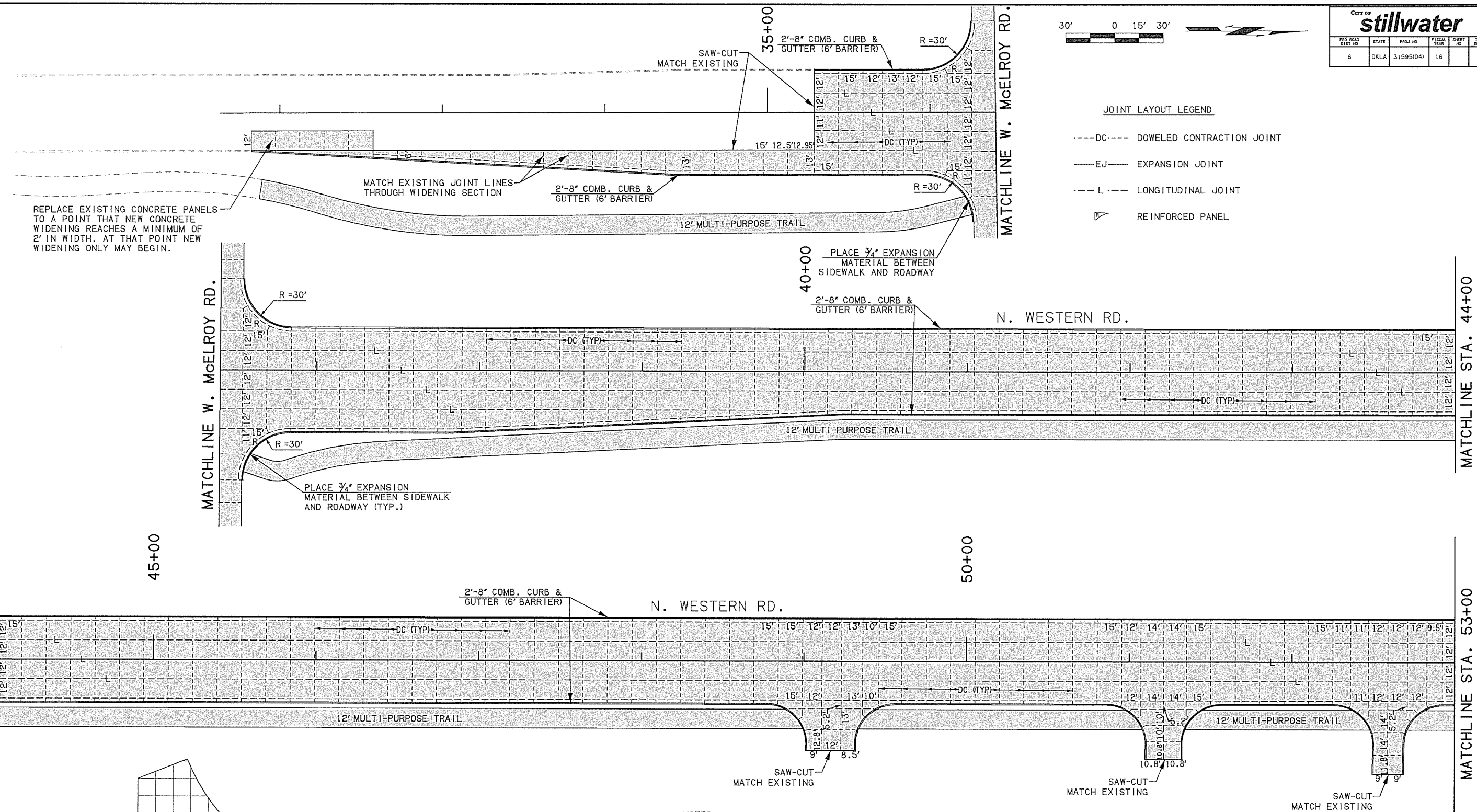


CITY OF Stillwater					
PROJ. NO.	STATE	PROJ. NO.	FISCAL YEAR	SHEET NO.	TOTAL SHEETS
6	OKLA	31595(04)	16		

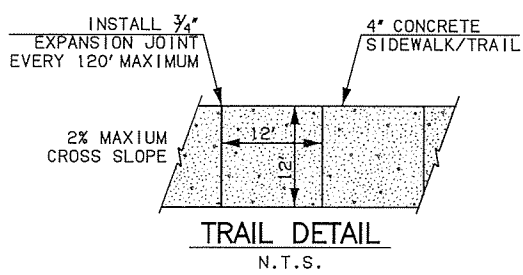
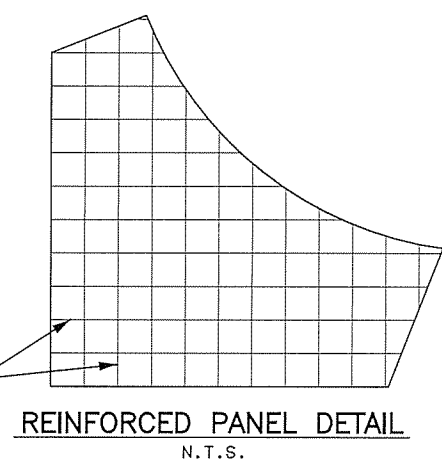


JOINT LAYOUT LEGEND

- DC--- DOWELED CONTRACTION JOINT
- EJ— EXPANSION JOINT
- L--- LONGITUDINAL JOINT
- ▲ REINFORCED PANEL



REPLACE EXISTING CONCRETE PANELS TO A POINT THAT NEW CONCRETE WIDENING REACHES A MINIMUM OF 2' IN WIDTH. AT THAT POINT NEW WIDENING ONLY MAY BEGIN.



- NOTES:**
1. TRANSVERSE JOINTS SHALL BE PLACED AT 15 FOOT SPACING UNLESS OTHERWISE NOTED.
 2. SEE ODOT STD. LECS-4 & LTU-4 (CURRENT REVISION) FOR DOWEL BAR & TIE BAR DETAILS.
 3. SEE JOINT LAYOUT DETAIL SHEET FOR REINFORCEMENT PANEL DETAILS AND SIDEWALK DETAILS.
 4. FOR ADDITIONAL INFORMATION SEE ODOT STD. ASCD-5 & CSCD-5.
 5. MAINTAIN GUTTER FLOWLINE ACROSS DRIVES.
 6. ALL PANELS HAVING GREATER THAN 1.5 TO 1 RATIO ON SIDES AND ALL ODD SHAPED PANELS SHALL BE REINFORCED WHETHER OR NOT DESIGNATED AS "R" ON THE PLANS.

Design		WESTERN ROAD	PAYNE COUNTY
Drawn		JOINT LAYOUT (1)	
Checked			
Approved			
Squad	OLSSON ASSOCIATES		
		Project No. 31595(04)	Sheet No. 31