

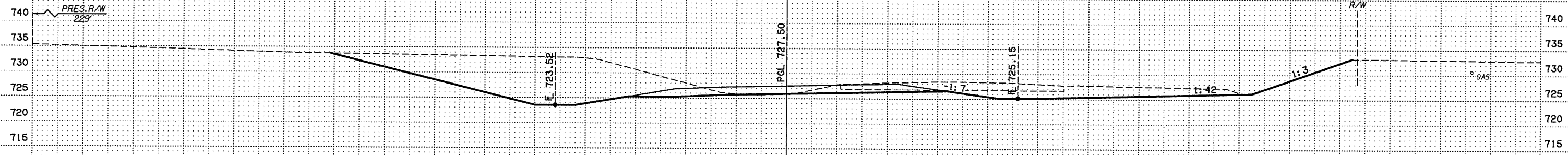
P:\ECN\650-TUL\CIV\25523\000\_000T\_US169Brdg\20\_DESGN\40\_CAD\_Hickory\40\_CAD\_Hickory\40\_C.X\_Sect\_05.dgn 7/12/2016 7:57:03 AM

-150 -100 -50 0 50 100 150

CAUTION: EXIST. OVERHEAD ELECTRIC CROSSING AT APPROX. STA. 698+18.68, C US 169 LOW WIRE ELEV. 775.88

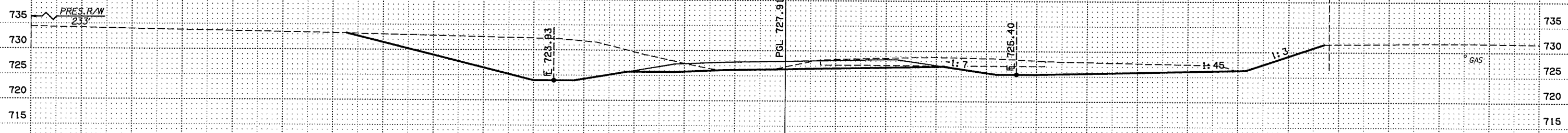
CUT AREA : 588.64  
FILL AREA : 0.82

CUT VOL : 1012.17  
FILL VOL : 1.28



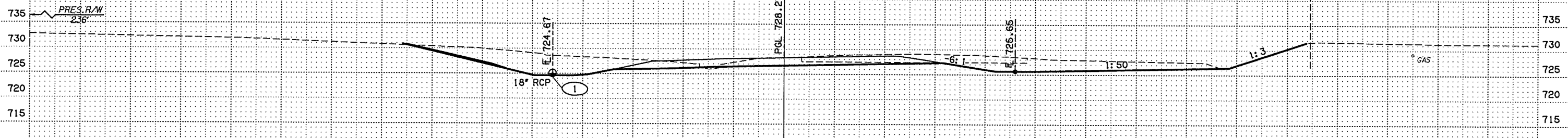
CUT AREA : 504.53  
FILL AREA : 0.33

CUT VOL : 769.01  
FILL VOL : 1.63



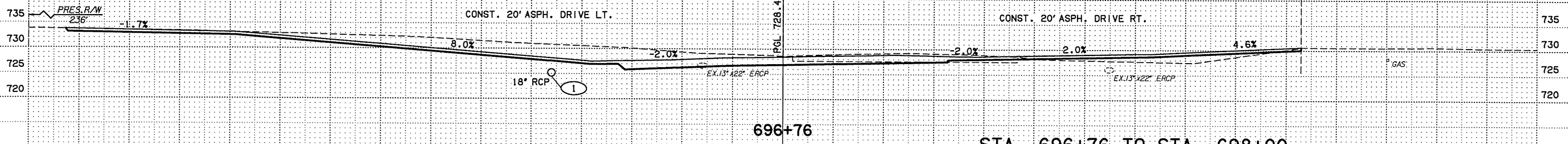
CUT AREA : 326.03  
FILL AREA : 1.14

CUT VOL : 306.70  
FILL VOL : 20.83



CUT AREA : 369.44  
FILL AREA : 38.23

CUT VOL : 307.42  
FILL VOL : 31.14



STA. 696+76 TO STA. 698+00

US 169  
US 169 OVER HICKORY CREEK  
NOWATA COUNTY  
Job Piece No. 24750(04) Sheet No. X5

-150 -100 -50 0 50 100 150

SCALE: 1"=10'