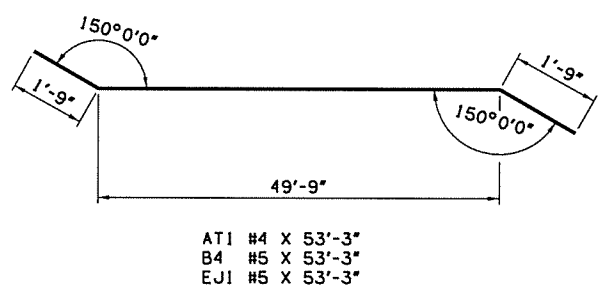
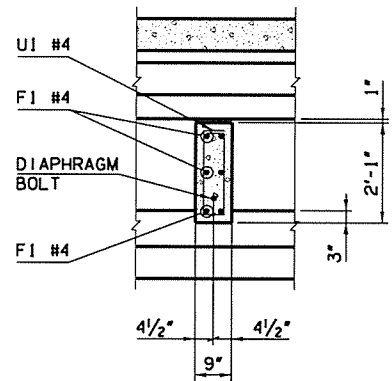
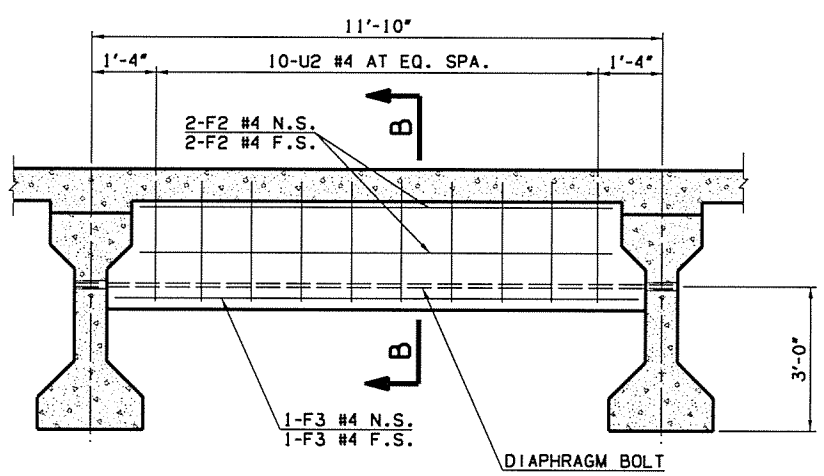


**INTERMEDIATE DIAPHRAGM**  
SCALE: 1/2" = 1'-0"

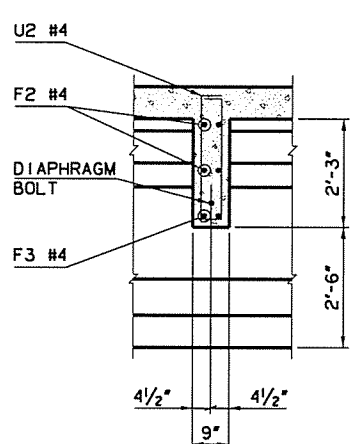


**DECK SLAB NOTES:**

- EPOXY-COAT OR GALVANIZE STEEL ITEMS USED TO FACILITATE CONSTRUCTION, SUCH AS DECK FORM HANGERS, TY-BAR CLIPS, INSERT WELD ANCHORS, OR OTHER APPURTENANCES, THAT WILL REMAIN IN PLACE IN THE DECK SLAB. EPOXY-COAT IN ACCORDANCE WITH AASHTO M284 OR GALVANIZE IN ACCORDANCE WITH AASHTO M111.
- IN THE EVENT OF AN EMERGENCY, HALT THE PLACEMENT OF CONCRETE BY FORMING A CONSTRUCTION JOINT MADE PERPENDICULAR TO THE DIRECTION OF TRAFFIC OR AS DIRECTED BY THE ENGINEER. DO NOT PLACE ANY HEAVY EQUIPMENT ON THE FINISHED DECK SLAB WITHIN 5' OF ANY CONSTRUCTION JOINT UNTIL CONCRETE IS IN PLACE ON BOTH SIDES OF THE RESPECTIVE JOINT AND AT LEAST 48 HOURS HAS ELAPSED SINCE CONCRETE PLACEMENT.
- SEAL ALL DECK SLAB CONSTRUCTION JOINTS WITH HIGH MOLECULAR WEIGHT METHACRYLATE IN ACCORDANCE WITH SECTION 523 OF THE SPECIFICATIONS. INCLUDE ALL COST OF EQUIPMENT AND LABOR FOR THE INSTALLATION OF THE HIGH MOLECULAR WEIGHT METHACRYLATE SEALER IN THE CONTRACT UNIT PRICE OF "SEALER CRACK PREPARATION". INCLUDE ALL COST OF THE HIGH MOLECULAR WEIGHT METHACRYLATE SEALER IN THE CONTRACT UNIT PRICE OF "SEALER RESIN". THE DEPARTMENT WILL NOT MEASURE THE PREPARATION AND SEALER OF EMERGENCY CONSTRUCTION JOINTS FOR PAYMENT.
- DO NOT PLACE THE CONCRETE FOR THE DECK SLAB OR APPLY OTHER MASSIVE LOADS TO THE BEAMS OR DIAPHRAGMS UNTIL THE CONCRETE IN THE DIAPHRAGMS HAS BEEN IN PLACE A MINIMUM OF 10 DAYS OR AT THE DISCRETION OF THE ENGINEER. THE ENGINEER MAY APPROVE SHORTENED TIME IF THE BEAM AND DIAPHRAGM CONCRETE HAS ATTAINED 80% OF THE SPECIFIED COMPRESSIVE STRENGTH.
- LONGITUDINAL REINFORCING SHALL BE CONTINUOUS THROUGH ALL CONSTRUCTION JOINTS.
- DO NOT SAW-CUT GROOVE WITHIN 6" OF ANY CONSTRUCTION JOINT.
- BARs SHALL BE CONTINUOUS THRU CONSTRUCTION JOINTS AT FIXED PIERS. DO NOT LAP WITHIN 10 FEET OF CENTERLINE OF FIXED PIER.



**END DIAPHRAGM**  
SCALE: 1/2" = 1'-0"



SUPERSTRUCTURE BAR LIST (ONE REQUIRED)					
EPOXY COATED REINFORCING					
MARK	SIZE	QTY.	FORM	LENGTH	REMARKS
A1	#4	464	BNT.	47'-8"	
A2	#4	196	BNT.	23'-8" (AVG.)	2'-10" TO 44'-6" SEE NOTE 6
B1	#5	464	STR.	46'-8"	
B2	#5	120	STR.	31'-5" (AVG.)	18'-9" TO 44'-0"
B3	#5	156	STR.	10'-1" (AVG.)	1'-9" TO 18'-4"
B4	#5	4	BNT.	53'-3"	
AC1	#5	1098	BNT.	7'-11"	
AC2	#5	28	BNT.	5'-3" (AVG.)	2'-7" TO 7'-11" SEE NOTE 7
ET1	#4	95	STR.	104'-5"	SEE NOTE 1
ET2	#4	95	STR.	185'-0"	SEE NOTE 2
ET3	#4	76	STR.	10'-0"	
EB1	#5	95	STR.	105'-7"	SEE NOTE 3
EB2	#5	95	STR.	188'-6"	SEE NOTE 4
EB3	#5	76	STR.	10'-0"	
AH1	#4	12	BNT.	3'-0"	
AH2	#4	10	BNT.	4'-3"	
AH3	#4	88	BNT.	5'-8"	
AT1	#4	14	BNT.	53'-3"	
AT2	#4	6	STR.	48'-10"	
AT3	#4	8	STR.	10'-3"	
AT4	#4	4	STR.	1'-10"	
AS1	#4	96	BNT.	5'-0"	
F1	#4	72	STR.	9'-0"	
F2	#4	96	STR.	9'-6"	
F3	#4	48	STR.	10'-8"	
U1	#4	120	BNT.	4'-9"	
U2	#4	240	BNT.	6'-3"	
FS2	#5	382	BNT.	7'-4"	SEE NOTE 5
L1	#4	192	BNT.	1'-3"	SEE NOTE 5
EJ1	#5	6	BNT.	53'-3"	
EPH1	#4	96	BNT.	3'-11"	
FPH1	#4	44	BNT.	6'-6"	

**NOTES:**

- INCLUDES 1 - 25" MIN. LAP.
- INCLUDES 3 - 25" MIN. LAPS.
- INCLUDES 1 - 39" MIN. LAP.
- INCLUDES 3 - 39" MIN. LAPS.
- SEE ODOT STD. FSHP-42-2.
- 4 SETS OF 49
- 4 SETS OF 7

SUPERSTRUCTURE QUANTITIES		
ITEM	UNIT	TOTAL
PRESTRESSED CONCRETE BEAMS (TYPE IV)	LF	1370.0
SAW-CUT GROOVING	SY	1376.1
SEALED EXPANSION JOINT	LF	53.67
42" F-SHAPED PARAPET	LF	563.0
STRUCTURAL STEEL	LB	1670
STAINLESS STEEL FIXED BEARING ASSEMBLY	EA	20
STAINLESS STEEL EXPANSION BEARING ASSEMBLY	EA	10
CLASS AA CONCRETE	CY	375.5
EPOXY COATED REINFORCING STEEL	LB	112370
WATER REPELLENT (VISUALLY INSPECTED)	SY	1138
SEALER CRACK PREPARATION	LF	54
SEALER RESIN	GAL	0.4

N.S. = NEAR SIDE  
F.S. = FAR SIDE

Design	PAA	6/16	US 169 OVER HICKORY CREEK BRIDGE A <b>SUPERSTRUCTURE DETAILS</b> (SHEET 4 OF 4) Job Piece No. 247501041 Sheet No. 69
Drawn	JT	6/16	
Checked	AEJ	6/16	
Approved	SAK	6/16	
Squad	BENHAM		