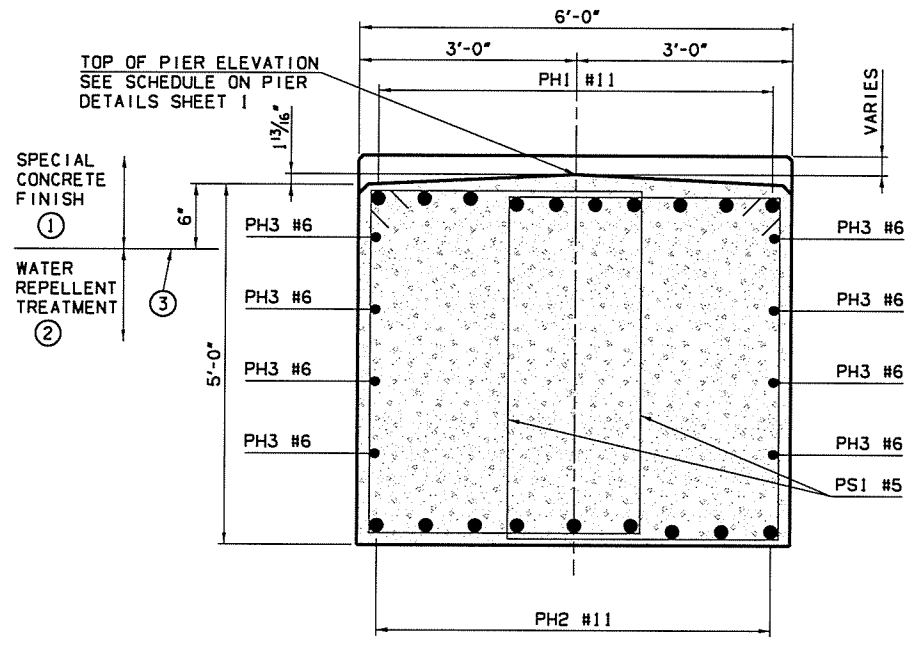
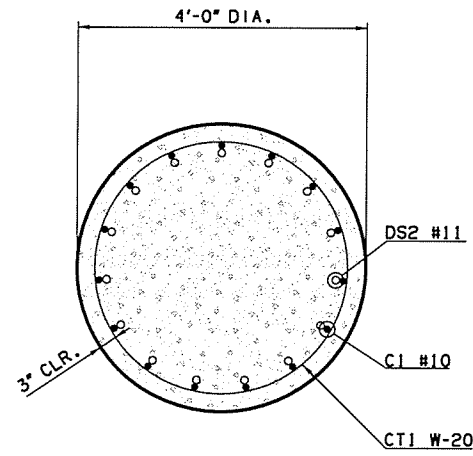


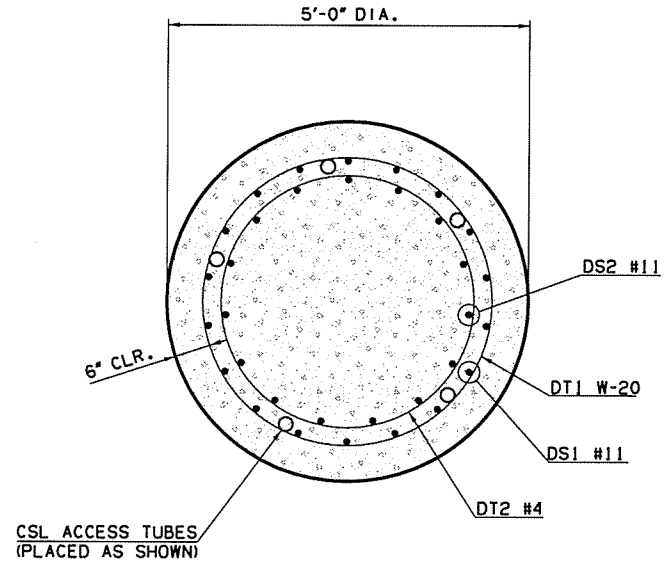
DOT DIVISION	STATE	J/P PROJ NO	YEAR	SHEET NO	TOTAL SHEETS
8	OKLA	24750(04)		63	127



SECTION A-A
SCALE: 3/4" = 1'-0"



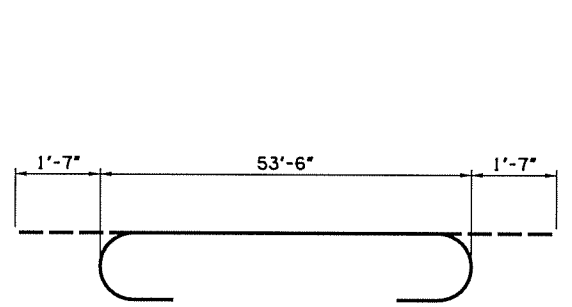
SECTION B-B
SCALE: 3/4" = 1'-0"



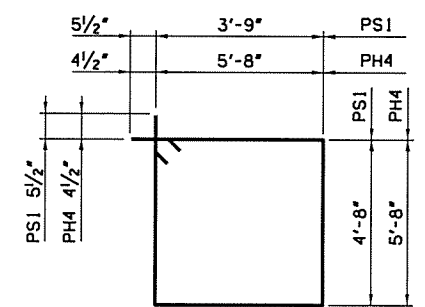
SECTION C-C
SCALE: 3/4" = 1'-0"

- APPLY CIM 1000, "SPECIAL CONCRETE FINISH" TO SURFACES INDICATED, INCLUDING TOP OF PIER CAP, ALL SURFACES OF THE PEDESTALS AND DOWN 6" BELOW THE EDGE OF THE CAP ON THE SIDES AND END FACES.
- TREAT ALL EXTERIOR VERTICAL SURFACES OF THE PIER CAPS WITH A PENETRATING WATER REPELLENT SURFACE TREATMENT. (CIM 1000 WILL OVERLAP WATER REPELLENT NEAR TOP OF CAP)
- MASK SIDES AND ENDS OF PIER CAP ALONG THIS LINE TO PROVIDE A CLEAN STRAIGHT FINISH AT BOTTOM OF CIM 1000 APPLICATION.

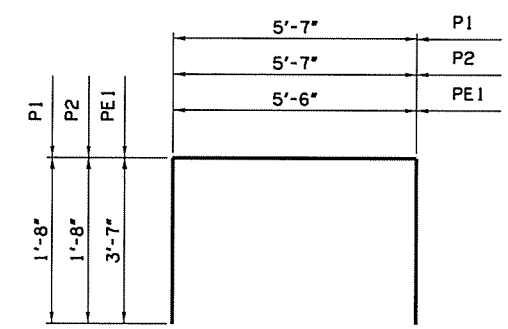
NOTE:
APPLY URETHANE COATING BEFORE ANY OTHER SURFACE TREATMENTS.



PH1 #11 X 56'-8"



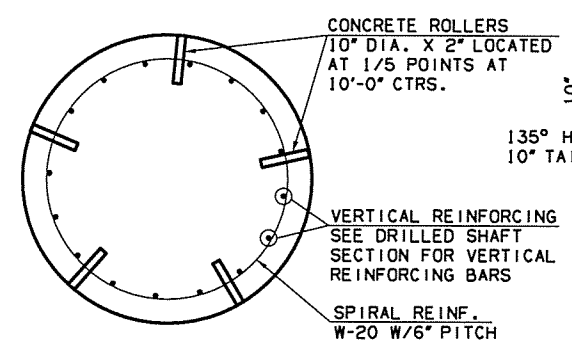
PS1 #5 X 17'-9"
PH4 #4 X 23'-5"



P1 #4 X 8'-11"
P2 #4 X 8'-11"
PE1 #5 X 12'-8"

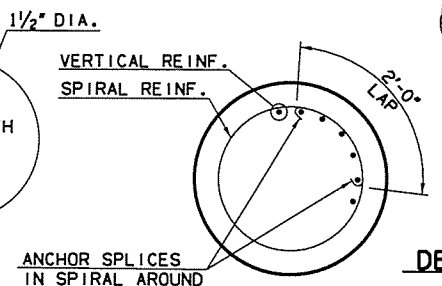
PIER NO. 1 BAR LIST (ONE PIER)					
EPOXY COATED REINFORCING					
MARK	SIZE	QTY.	FORM	LENGTH	REMARKS
C1	#10	45	STR	25'-5"	
PH1	#11	10	BNT	56'-8"	
PH2	#11	9	STR	53'-6"	
PH3	#6	8	STR	53'-6"	
PH4	#4	6	BNT	23'-5"	
PE1	#5	8	BNT	12'-8"	
PS1	#5	100	BNT	17'-9"	
P1	#4	28	BNT	8'-11"	
P2	#4	28	BNT	8'-11"	
PLAIN REINFORCING					
MARK	SIZE	QTY.	FORM	LENGTH	REMARKS
CT1	W20	3	BNT	533'-8"	
DT2	#4	27	BNT	12'-6"	SEE NOTE 1
DRILLED SHAFT PLAIN REINFORCING					
MARK	SIZE	QTY.	FORM	LENGTH	REMARKS
DS1	#11	54	STR	20'-6"	SEE NOTE 1
DS2	#11	45	STR	19'-5"	SEE NOTE 1
DT1	W20	3	BNT	555'-0"	SEE NOTE 1

PIER NO. 2 BAR LIST (ONE PIER)					
EPOXY COATED REINFORCING					
MARK	SIZE	QTY.	FORM	LENGTH	REMARKS
C1	#10	45	STR	18'-7"	
PH1	#11	10	BNT	56'-8"	
PH2	#11	9	STR	53'-6"	
PH3	#6	8	STR	53'-6"	
PH4	#4	6	BNT	23'-5"	
PE1	#5	8	BNT	12'-8"	
PS1	#5	100	BNT	17'-9"	
P1	#4	28	BNT	8'-11"	
P2	#4	28	BNT	8'-11"	
PLAIN REINFORCING					
MARK	SIZE	QTY.	FORM	LENGTH	REMARKS
CT1	W20	3	BNT	383'-3"	
DT2	#4	27	BNT	12'-6"	SEE NOTE 1
DRILLED SHAFT PLAIN REINFORCING					
MARK	SIZE	QTY.	FORM	LENGTH	REMARKS
DS1	#11	54	STR	30'-0"	SEE NOTE 1
DS2	#11	45	STR	19'-5"	SEE NOTE 1
DT1	W20	3	BNT	798'-0"	SEE NOTE 1

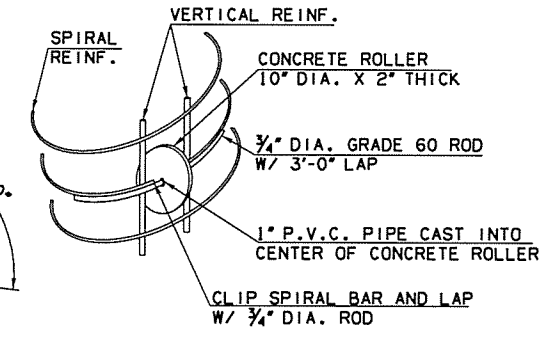


DETAIL OF DRILLED SHAFT ROLLER PLACEMENT

NOTE:
SPIRAL BARS SHALL CONFORM TO AASHTO M32. SPIRAL BAR LENGTH INCLUDE LAPS.

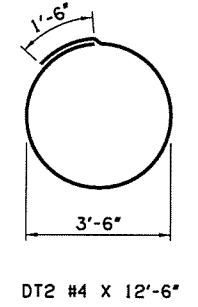


SPIRAL SPLICE



DETAIL OF DRILLED SHAFT ROLLER INSTALLATION

NOTE:
CONCRETE USED IN CONCRETE ROLLERS SHALL HAVE A MINIMUM 28 DAY COMPRESSIVE STRENGTH OF 4000 P.S.I.. SLAB BOLSTERS, HIGH CHAIRS AND PLASTIC ROLLERS SHALL NOT BE SUBSTITUTED FOR THE CONCRETE ROLLERS.



DT2 #4 X 12'-6"

- NOTE:**
- DRILLED SHAFT BARS ARE FOR INFORMATION PURPOSES ONLY. THE BARS ARE NOT INCLUDED IN THE QUANTITIES, BUT ARE INCLUDED IN THE PRICE BID FOR L.F. OF DRILLED SHAFTS.
 - INCLUDE COST FOR CROSSHOLE SONIC LOGGING ACCESS TUBES IN THE PRICE BID FOR L.F. OF DRILLED SHAFTS.
 - ALL EDGES OF PIER CAP SHALL HAVE A 1/2" CHAMFER EXCEPT FOR PEDESTAL EDGES WHICH SHALL HAVE A 3/4" CHAMFER.

Design	AEJ	6/16	US 169 OVER HICKORY CREEK BRIDGE A PIER DETAILS (SHEET 2 OF 2)	NOWATA COUNTY
Drawn	RAH	6/16		
Checked	KSJ	6/16		
Approved	SAK	6/16		
Squad	BENHAM			

Job Piece No. 24750(04) Sheet No. 63