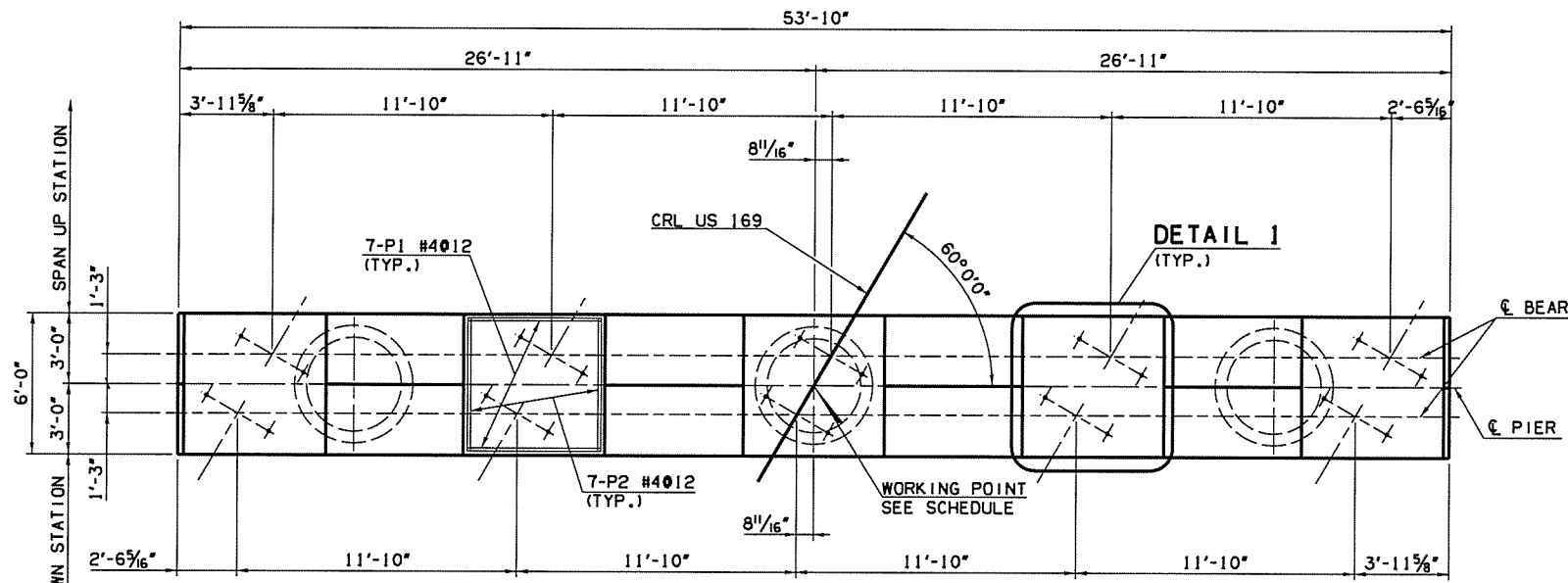


DOT	DIVISION	STATE	J/P PROJ NO	FISCAL YEAR	SHEET NO	TOTAL SHEETS
8	OKLA		24750(04)		62	127



NOTE:

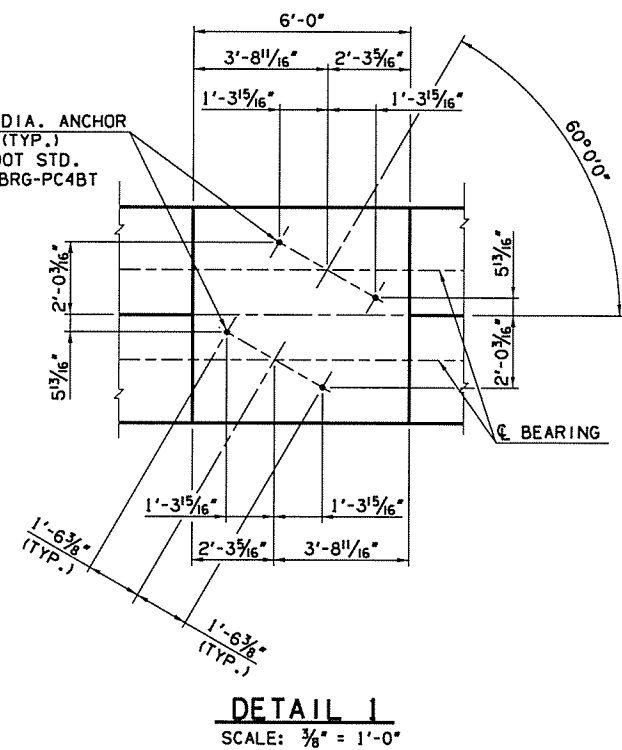
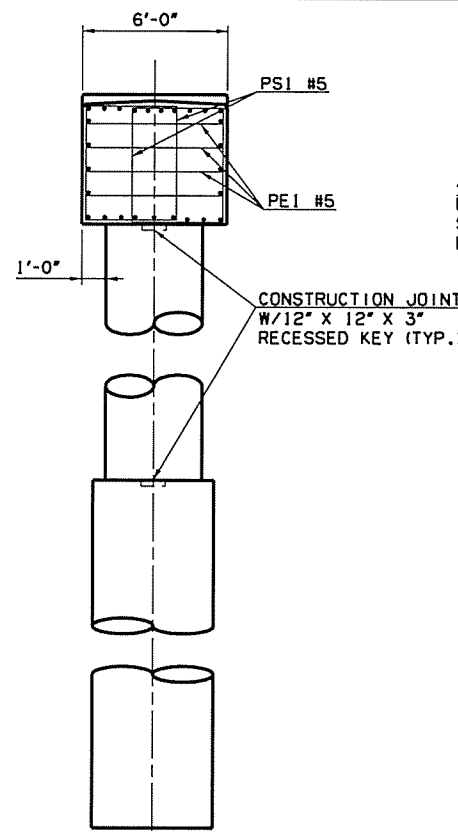
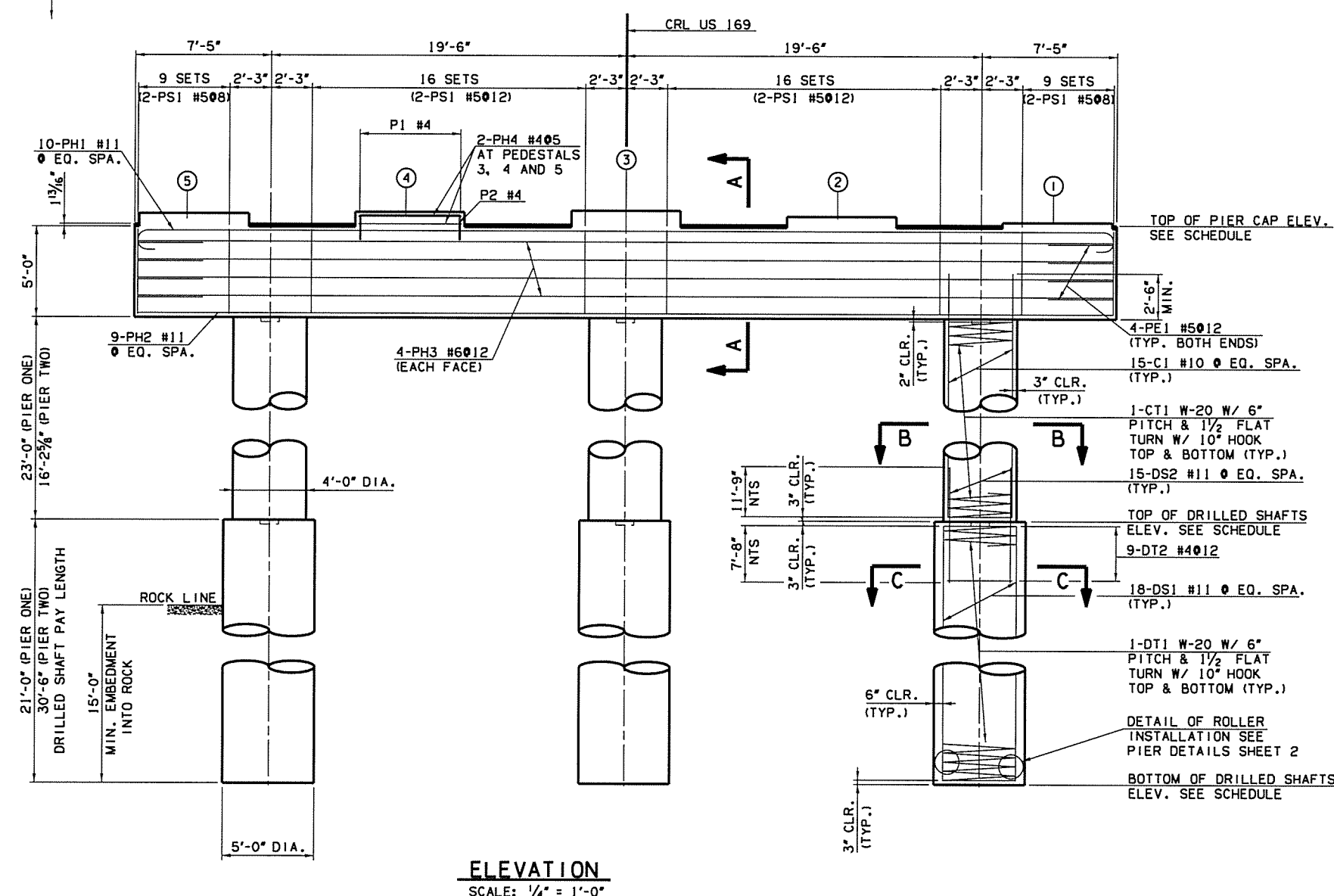
1. ADJUST PH BARS AS NEEDED TO PROVIDE A MINIMUM OF 4" CLEARANCE FOR TREMIE AND CLEARANCE FOR ANCHOR BOLTS.
2. OMIT REINFORCING IN 2" PEDESTALS.
3. FOR BEARINGS SEE ODOT STD. B40-1-BRG-RB

PIER STATIONS AND ELEVATIONS SCHEDULE

PIER NO. 1			
PEDESTAL NO.	ELEVATION	WORKING POINT STATION	ELEVATION
1	698.37	711+99.01	
2	698.68	TOP OF PIER	698.20
3	698.99	TOP OF DRILLED SHAFTS	670.00
4	698.89	BOT. OF DRILLED SHAFTS	649.00
5	698.79		

PIER NO. 2			
PEDESTAL NO.	ELEVATION	WORKING POINT STATION	ELEVATION
1	696.54	713+00.39	
2	696.85	TOP OF PIER	696.37
3	697.16	TOP OF DRILLED SHAFTS	675.00
4	697.06	BOT. OF DRILLED SHAFTS	644.50
5	696.97		

PIER QUANTITIES				
ITEM	UNIT	PIER NO. 1	PIER NO. 2	TOTAL
SPECIAL CONCRETE FINISH	SY	52	52	104
CLASS A CONCRETE	CY	96.6	87.1	183.7
REINFORCING STEEL	LB	1320	1010	2330
EPOXY COATED REINFORCING STEEL	LB	13520	12200	25720
WATER REPELLENT (VISUALLY INSPECTED)	SY	60	60	120
DRILLED SHAFTS 60" DIAMETER	LF	63	92	155
CROSSHOLE SONIC LOGGING	EA			1



Design	AEJ	6/16	US 169 OVER HICKORY CREEK	NOWATA COUNTY
Drawn	RAH	6/16	BRIDGE A	
Checked	KSJ	6/16	PIER DETAILS	
Approved	SAK	6/16	(SHEET 1 OF 2)	
Squad	BENHAM		Job Piece No. 24750(04)	Sheet No. 62