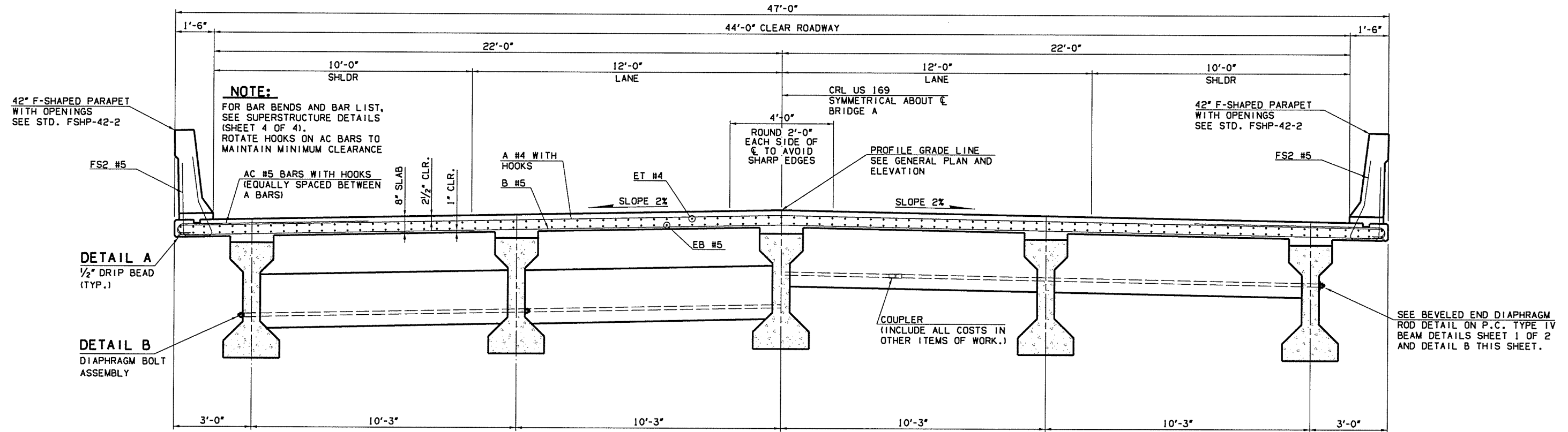


7/12/2016

12:29:46 PM

P:\E\1650-TULACIV\255231000-0001-US169Brdg.dwg 20.DESIGN\40.CAD\_Hickory\DCN\5\Brdge A\24750(04).S.Typ.Sect-0.dgn

DOT DIVISION	STATE	J/P PROJ NO	FISCAL YEAR	SHEET NO	TOTAL SHEETS
8	OKLA	24750(04)		55	127

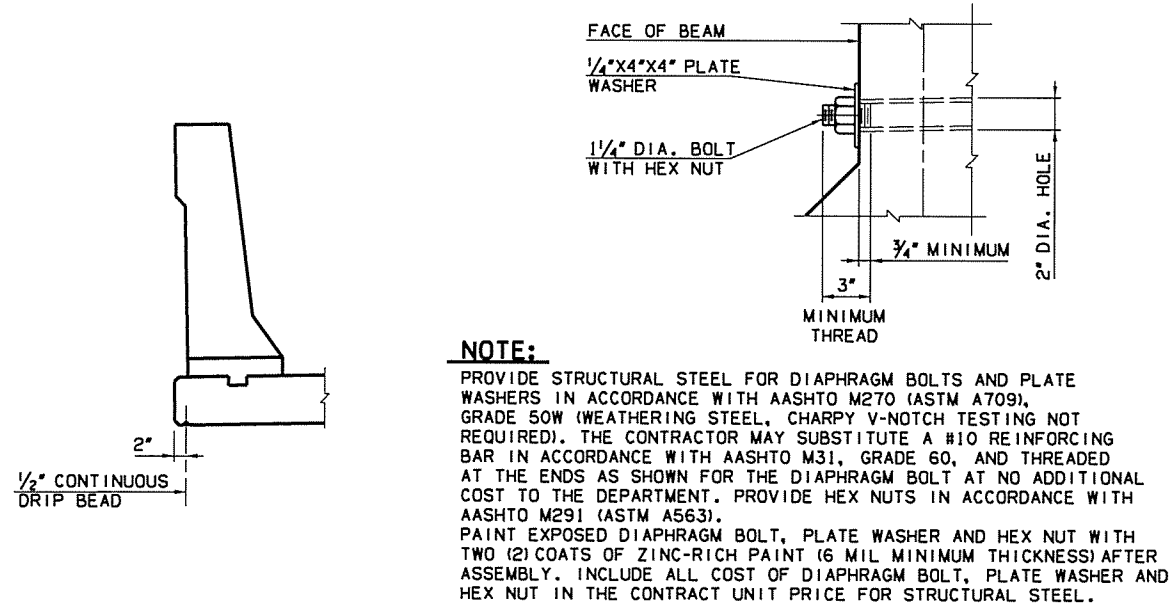


HALF SECTION AT INTERMEDIATE DIAPHRAGMS

HALF SECTION AT END DIAPHRAGMS

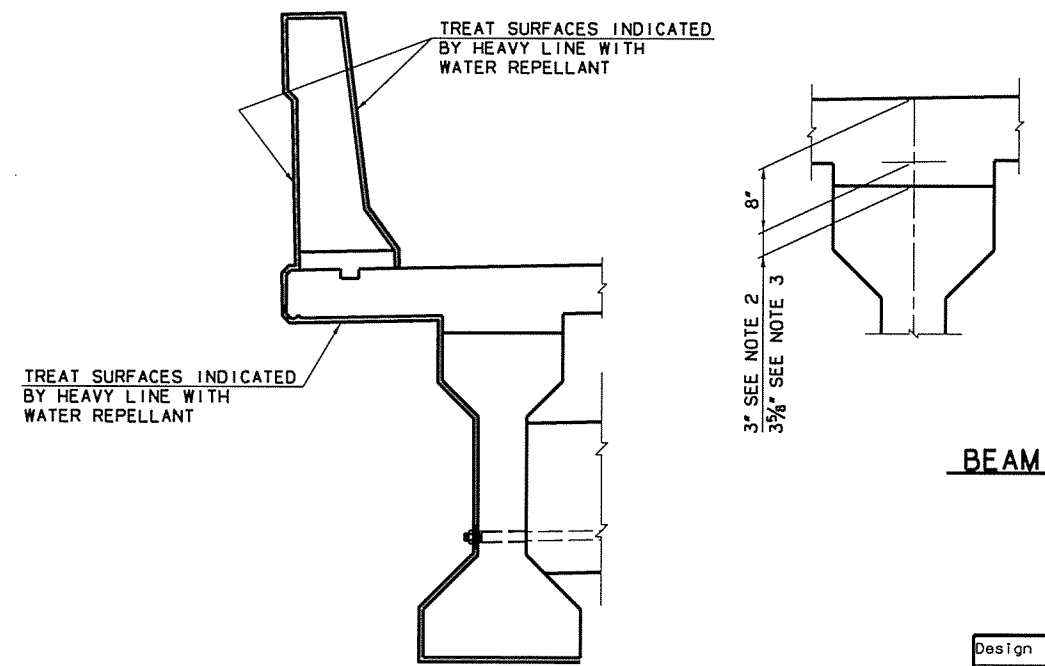
TYPICAL SECTION THRU STRUCTURE

SCALE: 1/2" = 1'-0"



DETAIL A SCALE: 3/4" = 1'-0"

DETAIL B SCALE: 3/4" = 1'-0"



WATER REPELLANT TREATMENT DETAILS

SCALE: 3/4" = 1'-0"

- NOTES:**
1. PLAN QUANTITIES FOR CLASS AA CONCRETE INCLUDE BEAM HAUNCHES. THE HAUNCH HEIGHT SHOWN IS THE THEORETICAL HAUNCH HEIGHT AT THE CENTERLINE BEARING ONLY, MEASURED FROM THE BOTTOM OF THE DECK SLAB TO THE TOP OF THE BEAM, AND VARIES ACROSS THE SPAN. DETERMINE THE ACTUAL HAUNCH HEIGHT (ACCOUNTING FOR BEAM CAMBER, DEAD LOAD DEFLECTION AND ROADWAY GRADE) AFTER ERECTION OF THE BEAMS AND SUBMIT TO THE ENGINEER FOR APPROVAL. THE ENGINEER WILL NOT MEASURE DIFFERENCES BETWEEN THE THEORETICAL AND THE ACTUAL HAUNCH HEIGHT FOR PAYMENT.
  2. 3" AT ABUTMENTS AND THE UPSTATION PEDESTALS OF PIER 1 AND PIER 2.
  3. 3 3/8" AT THE DOWNSTATION PEDESTALS OF PIER 1 AND PIER 2.

BEAM HAUNCH DETAIL

SCALE: 1" = 1'-0"

Design	SAK	6/16	US 169 OVER HICKORY CREEK	NOWATA COUNTY
Drawn	WZB	6/16	BRIDGE A	
Checked	AEJ	6/16		
Approved	SAK	6/16		
Squad	BENHAM			

Job Piece No. 24750(04) Sheet No. 55