

OKLAHOMA DEPARTMENT OF TRANSPORTATION					
FED. ROAD DIST. NO.	STATE	PROJ. NO.	FISCAL YEAR	SHEET NO.	TOTAL SHEETS
8	OKLA.	24750(04)		50	127
DESCRIPTION		REVISIONS		DATE	

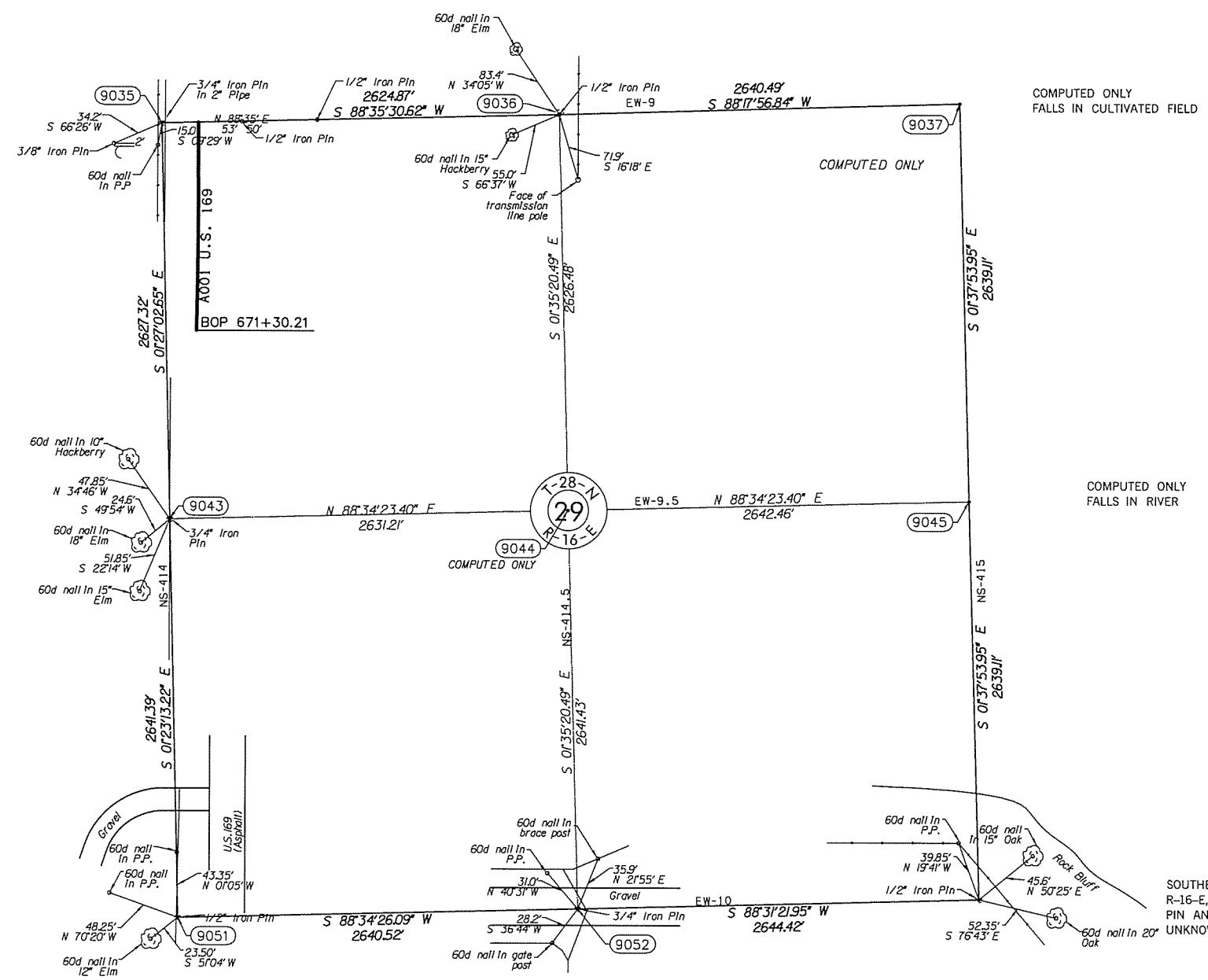
NORTHWEST CORNER OF SECTION 29, T-18-N, R-16-E, I.M. FOUND AND ACCEPTED A 3/4" IRON PIN IN A 2" PIPE AND TWO REFERENCES SET BY PERSONS UNKNOWN. SET TWO REFERENCES.

NORTH QUARTER CORNER OF SECTION 29, T-28-N, R-16-E, I.M. SET A 1/2" IRON PIN WITH CAP STAMPED "CA-1427" USING THE RECORDED TIES TO THE CENTERLINE OF A SURVEY PERFORMED BY SETTLE ENGINEERING FOR THE OKLAHOMA DEPARTMENT OF TRANSPORTATION IN 1956-1959, NAMED SWO 2137(1). SET THREE REFERENCES.

WEST QUARTER CORNER OF SECTION 29, T-28-N, R-16-E, I.M. FOUND AND ACCEPTED A 3/4" IRON PIN SET BY PERSONS UNKNOWN. SET THREE REFERENCES.

SOUTHWEST OF SECTION 29, T-28-N, R-16-E, I.M. FOUND AND ACCEPTED A 1/2" IRON PIN SET BY PERSONS UNKNOWN. SET THREE REFERENCES.

SOUTH QUARTER CORNER OF SECTION 29, T-28-N, R-16-E, I.M. FOUND AND ACCEPTED A 3/4" IRON PIN AND TWO REFERENCES SET BY PERSONS UNKNOWN. SET ONE REFERENCE.



COMPUTED ONLY
FALLS IN CULTIVATED FIELD

COMPUTED ONLY
FALLS IN RIVER

SOUTHEAST CORNER OF SECTION 29, T-28-N, R-16-E, I.M. FOUND AND ACCEPTED A 1/2" IRON PIN AND THREE REFERENCES SET BY PERSONS UNKNOWN.



SCALE:
1" = 500'

NOTE: REFERENCE'S SHOWN ARE NOT TO SCALE

PLS	DMM	OKLAHOMA DEPARTMENT OF TRANSPORTATION SURVEY DIVISION
DRAWN	ARR	
CHECKED	VKM	
APPROVED	DMM	
CREW	GES, INC.	
		SURVEY DATA SHEET (16)
		SWO 4721(1) PROJECT NO. 24750(04) SHEET NO. 50