

OKLAHOMA DEPARTMENT OF TRANSPORTATION					
FED. ROAD DIST. NO.	STATE	PROJ. NO.	FISCAL YEAR	SHEET NO.	TOTAL SHEETS
8	OKLA.	24750(04)		49	127
DESCRIPTION			REVISIONS	DATE	

NORTHWEST CORNER OF SECTION 20, T-28-N, R-16-E, I.M. FOUND AND ACCEPTED A 2" PIPE AND THREE REFERENCES LISTED ON A CERTIFIED CORNER RECORD FILED BY GUY R. BUCKLAND OF BUCKLAND SURVEYING COMPANY, INC. ON MARCH 20, 2007.

NORTH QUARTER CORNER OF SECTION 30, T-28-N, R-16-E, I.M. FOUND AND ACCEPTED A 1" SQUARE BOLT SET BY PERSONS UNKNOWN. SET TWO REFERENCES.

NORTHEAST CORNER OF SECTION 30, T-18-N, R-16-E, I.M. FOUND AND ACCEPTED A 3/4" IRON PIN IN A 2" PIPE AND TWO REFERENCES SET BY PERSONS UNKNOWN. SET TWO REFERENCES.

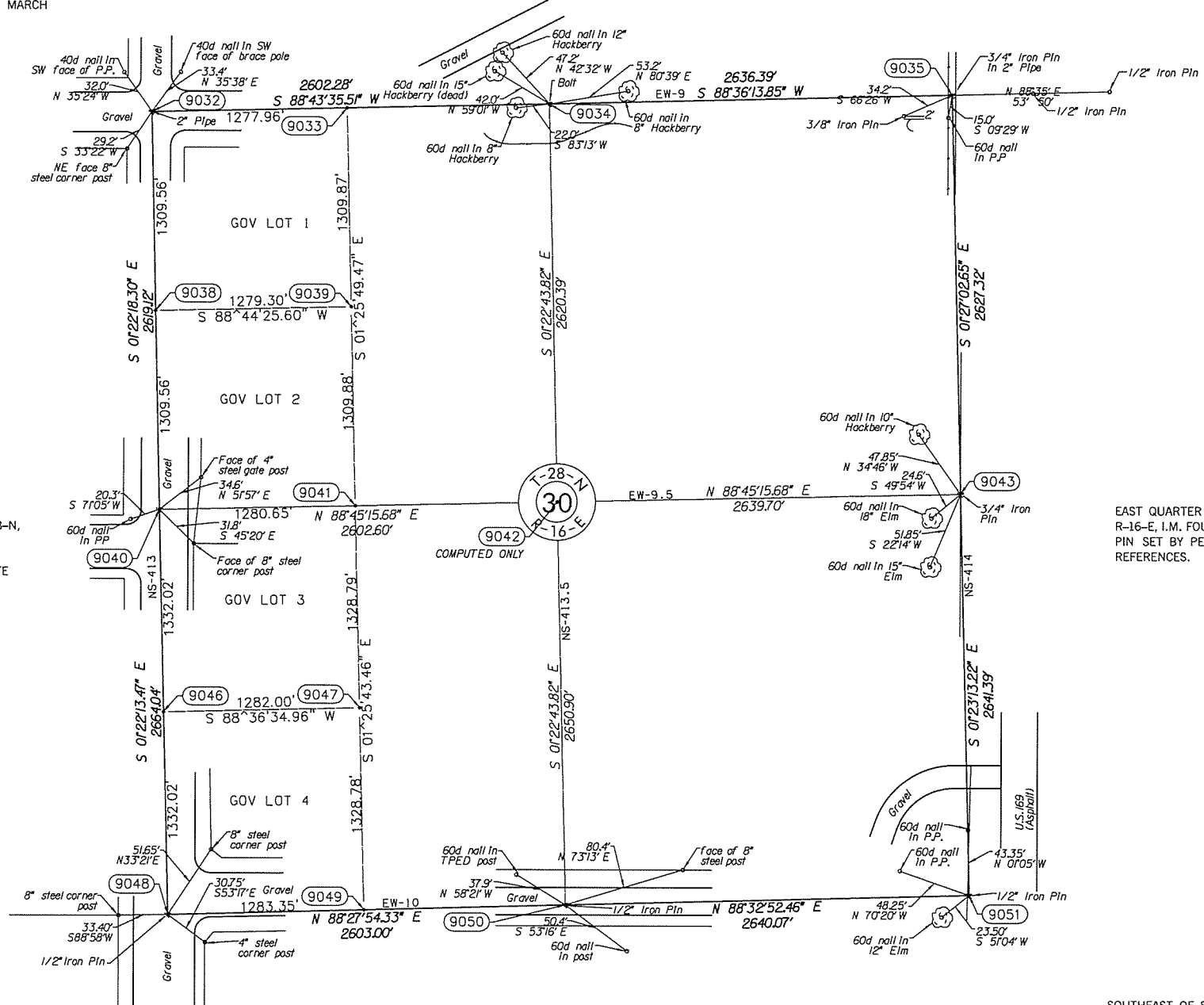
WEST QUARTER CORNER OF SECTION 30, T-28-N, R-16-E, I.M. SET 1/2" IRON PIN WITH CAP STAMPED "CA-1427". THE POSITION WAS DETERMINED BY USING SINGLE PROPORTIONATE MEASUREMENT. SET THREE REFERENCES.

EAST QUARTER CORNER OF SECTION 30, T-28-N, R-16-E, I.M. FOUND AND ACCEPTED A 3/4" IRON PIN SET BY PERSONS UNKNOWN. SET THREE REFERENCES.

SOUTHWEST CORNER OF SECTION 30, T-28-N, R-16-E, I.M. FOUND AND ACCEPTED A 1/2" IRON PIN SET BY PERSONS UNKNOWN. SET THREE REFERENCES.

SOUTH QUARTER CORNER OF SECTION 30, T-28-N, R-16-E, I.M. FOUND AND ACCEPTED A 1/2" IRON PIN SET BY PERSONS UNKNOWN. SET THREE REFERENCES.

SOUTHEAST OF SECTION 30, T-28-N, R-16-E, I.M. FOUND AND ACCEPTED A 1/2" IRON PIN SET BY PERSONS UNKNOWN. SET THREE REFERENCES.



SCALE: 1" = 500'

NOTE: REFERENCE'S SHOWN ARE NOT TO SCALE

PLS	DMM	OKLAHOMA DEPARTMENT OF TRANSPORTATION SURVEY DIVISION
DRAWN	ARR	
CHECKED	VKM	
APPROVED	DMM	
CREW	GES, INC.	
		<b>SURVEY DATA SHEET (15)</b>
		SWO 4721(1) PROJECT NO. 24750(04) SHEET NO. 49