

OKLAHOMA DEPARTMENT OF TRANSPORTATION				
FED. ROAD DIST. NO.	STATE	PROJ. NO.	FISCAL YEAR	SHEET NO. TOTAL SHEETS
8	OKLA	247500041		48 127
DESCRIPTION		REVISIONS	DATE	

NORTHWEST CORNER OF SECTION 20, T-28-N, R-16-E I.M. FOUND AND ACCEPTED A 5/8" IRON PIN AND 4 REFERENCES LISTED ON A CERTIFIED CORNER RECORD FILED BY GUY R. BUCKLAND OF BUCKLAND SURVEYING COMPANY, INC. ON NOVEMBER 5, 2008.

NORTH QUARTER CORNER OF SECTION 20, T-28-N, R-16-E, I.M. FOUND AND ACCEPTED A 3/8" IRON PIN SET BY PERSONS UNKNOWN. SET THREE REFERENCES.

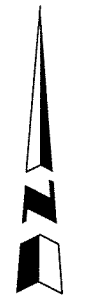
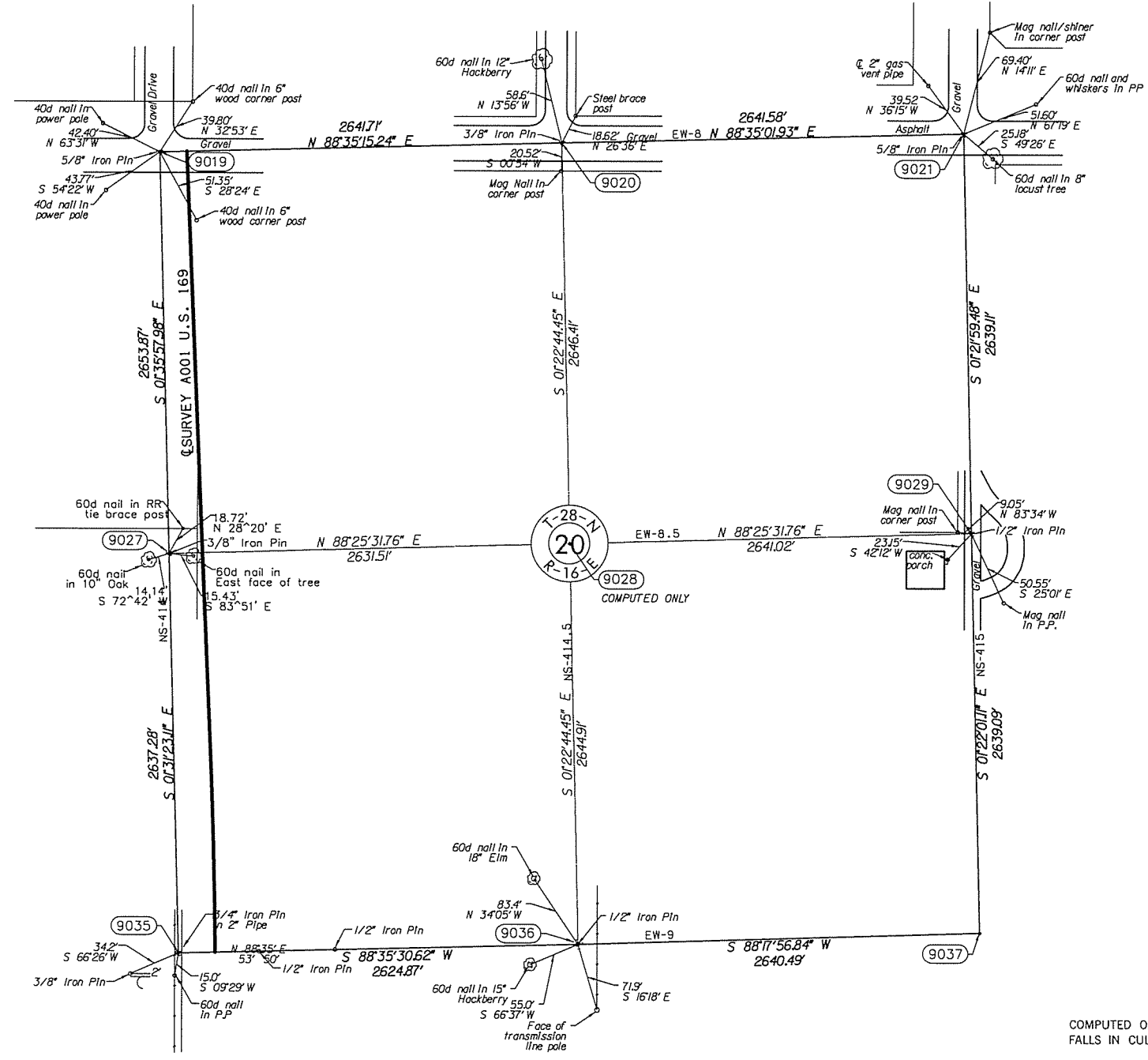
NORTHEAST CORNER OF SECTION 20, T-28-N, R-16-E, I.M. FOUND AND ACCEPTED A 5/8" IRON PIN AND FOUR REFERENCES AS LISTED ON A CERTIFIED CORNER RECORD FILED BY R. GARY WALKER OF CORNERSTONE REGIONAL SURVEYING LLC ON FEBRUARY 3, 2006.

WEST QUARTER CORNER OF SECTION 20, T-28-N, R-16-E, I.M. FOUND AND ACCEPTED A 3/8" IRON PIN SET BY PERSONS UNKNOWN. SET THREE REFERENCES.

EAST QUARTER CORNER OF SECTION 20, T-28-N, R-16-E, I.M. SET A 1/2" IRON PIN WITH CAP STAMPED "CA-1427". THE POSITION WAS DETERMINED BY USING SINGLE PROPORTIONATE MEASUREMENT. SET THREE REFERENCES.

SOUTHWEST CORNER OF SECTION 20, T-28-N, R-16-E, I.M. FOUND AND ACCEPTED A 3/4" IRON PIN IN A 2" PIPE AND TWO REFERENCES SET BY PERSONS UNKNOWN. SET TWO REFERENCES.

SOUTH QUARTER CORNER OF SECTION 20, T-28-N, R-16-E, I.M. SET A 1/2" IRON PIN WITH CAP STAMPED "CA-1427" USING THE RECORDED TIES TO THE CENTERLINE OF A SURVEY PERFORMED BY SETTLE ENGINEERING FOR THE OKLAHOMA DEPARTMENT OF TRANSPORTATION IN 1956-1959, NAMED SWO 2137(1). SET THREE REFERENCES.



SCALE: 1" = 500'

NOTE: REFERENCE'S SHOWN ARE NOT TO SCALE

COMPUTED ONLY
FALLS IN CULTIVATED FIELD

PLS	DMM	OKLAHOMA DEPARTMENT OF TRANSPORTATION SURVEY DIVISION
DRAWN	ARR	
CHECKED	VKM	
APPROVED	DMM	
CREW	GES, INC.	
		SURVEY DATA SHEET (14)
		SWO 4721(1) PROJECT NO. 24750(04) SHEET NO. 48