

OKLAHOMA DEPARTMENT OF TRANSPORTATION				
FED. ROAD DIST. NO.	STATE	PROJ. NO.	FISCAL YEAR	SHEET NO. / TOTAL SHEETS
8	OKLA.	24750(04)		47 / 127
DESCRIPTION		REVISIONS	DATE	

NORTHWEST CORNER OF SECTION 19, T-28-N, R-16-E I.M. FOUND AND ACCEPTED A 1/2" IRON PIN INSIDE OF A 2" PIPE AND ONE REFERENCE LISTED ON A CERTIFIED CORNER RECORD FILED BY GUY R. BUCKLAND OF BUCKLAND SURVEYING COMPANY, INC. ON MARCH 20, 2007. SET TWO REFERENCES.

NORTH QUARTER CORNER OF SECTION 19, T-28-N, R-16-E I.M. FOUND AND ACCEPTED A 1/2" IRON ROD AND 3 REFERENCES AS LISTED ON A CERTIFIED CORNER RECORD FILED BY GUY R. BUCKLAND, LS 1323, OF BUCKLAND SURVEYING COMPANY, INC. ON NOVEMBER 5, 2008. SET ONE REFERENCE.

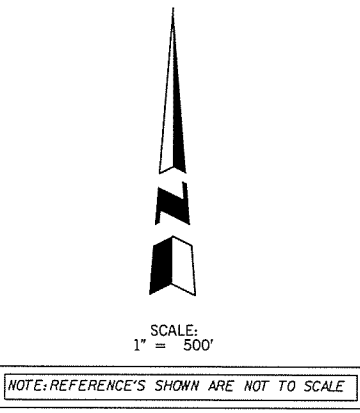
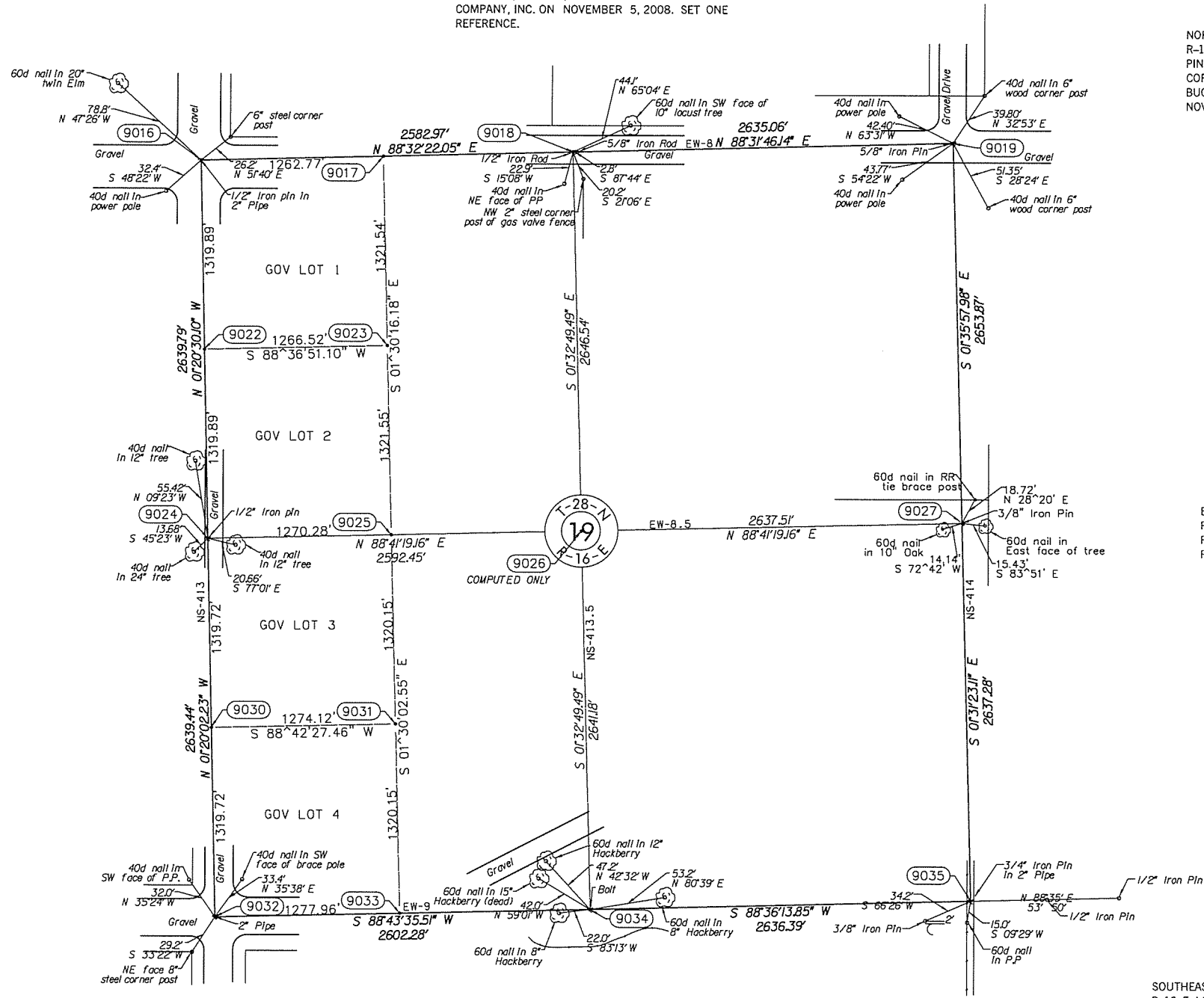
NORTHEAST CORNER OF SECTION 19, T-28-N, R-16-E I.M. FOUND AND ACCEPTED A 5/8" IRON PIN AND 4 REFERENCES LISTED ON A CERTIFIED CORNER RECORD FILED BY GUY R. BUCKLAND OF BUCKLAND SURVEYING COMPANY, INC. ON NOVEMBER 5, 2008.

WEST QUARTER CORNER OF SECTION 19, T-28-N, R-16-E, I.M. FOUND AND ACCEPTED A 1/2" IRON PIN WITH YELLOW CAP AND THREE REFERENCES LISTED ON A CERTIFIED CORNER RECORD FILED BY GUY R. BUCKLAND OF BUCKLAND SURVEYING COMPANY, INC. ON MARCH 20, 2007. THIS POSITION WAS RECORDED AS LOST.

EAST QUARTER CORNER OF SECTION 19, T-28-N, R-16-E, I.M. FOUND AND ACCEPTED A 3/8" IRON PIN SET BY PERSONS UNKNOWN. SET THREE REFERENCES.

SOUTHWEST CORNER OF SECTION 19, T-28-N, R-16-E, I.M. FOUND AND ACCEPTED A 2" PIPE AND THREE REFERENCES LISTED ON A CERTIFIED CORNER RECORD FILED BY GUY R. BUCKLAND OF BUCKLAND SURVEYING COMPANY, INC. ON MARCH 20, 2007.

SOUTH QUARTER CORNER OF SECTION 19, T-28-N, R-16-E, I.M. FOUND AND ACCEPTED A 1" SQUARE BOLT SET BY PERSONS UNKNOWN. SET TWO REFERENCES.



SOUTHEAST CORNER OF SECTION 19, T-18-N, R-16-E, I.M. FOUND AND ACCEPTED A 3/4" IRON PIN IN A 2" PIPE AND TWO REFERENCES SET BY PERSONS UNKNOWN. SET TWO REFERENCES.

PLS	DMM	OKLAHOMA DEPARTMENT OF TRANSPORTATION SURVEY DIVISION SURVEY DATA SHEET (13) SWO 4721(1) PROJECT NO. 24750(04) SHEET NO. 47
DRAWN	ARR	
CHECKED	VKM	
APPROVED	DMM	
CREW	GES, INC.	