

OKLAHOMA DEPARTMENT OF TRANSPORTATION					
FED. ROAD DIST. NO.	STATE	PROJ. NO.	FISCAL YEAR	SHEET NO.	TOTAL SHEETS
8	OKLA.	247501041		46	127
DESCRIPTION		REVISIONS		DATE	

NORTHWEST CORNER OF SECTION 17, T-28-N, R-16-E, I.M. FOUND AND REJECTED A MAG NAIL SET BY PERSONS UNKNOWN. SET MAG NAIL WITH SHINER STAMPED "CA-1427" AND THREE REFERENCES.

THE POSITION WAS ESTABLISHED BY USING A SURVEY PERFORMED BY THE SETTLE ENGINEERING COMPANY FOR THE OKLAHOMA DEPARTMENT OF TRANSPORTATION DURING 1956 TO 1959. THE SURVEY IS NAMED SWO 2137(1). THE SURVEY SHOWS AN ANGLE AND DISTANCE FROM A P.O.T. AT STATION 795+79.10 ESTABLISHED AT THE INTERSECTION OF THE NORTH LINE OF SECTION 17 TOWNSHIP 28 NORTH RANGE 16 EAST AND THE CENTERLINE OF SURVEY. P.O.T. 795+79.10 NOR ANY REFERENCES WERE RECOVERED. P.O.T. 795+79.10 WAS COMPUTED FROM POINTS RECOVERED NORTH AND SOUTH ALONG THE CENTERLINE OF SURVEY. THE POINT SOUTH IS A P.T. AT STATION 777+43.85. THE POINT NORTH IS A P.O.T. AT STATION 799+01.10. ALTHOUGH THE POINTS THEMSELVES WERE NOT RECOVERED, REFERENCE PIN LINES WERE FOUND IN CONDITION. FIELD MEASURE BETWEEN THE POINTS RESULTED IN A DISTANCE OF 2156.27'. THE SURVEY REFLECTS A DISTANCE OF 2157.25'. A PROPORTIONED POSITION WAS COMPUTED FOR P.O.T. 795+79.10. AN ANGLE OF 89°55'02" WAS MEASURED BETWEEN A LINE BEGINNING AT THE COMPUTED P.O.T. 795+79.10 TO THE NORTH QUARTER CORNER OF SECTION 17 TOWNSHIP 28 NORTH, RANGE 16 EAST AND THE CENTERLINE OF SURVEY. THE SURVEY REFLECTS AN ANGLE OF 89°55'. THE SURVEY REFLECTS A DISTANCE OF 99.60' FROM THE P.O.T. 795+79.10 AND THE NORTHWEST CORNER OF SECTION 17 TOWNSHIP 28 NORTH RANGE 16 EAST. THE POSITION WAS ESTABLISHED AT 99.60' FROM THE COMPUTED P.O.T. 795+79.10 AT A BEARING RUNNING FROM THE NORTH QUARTER CORNER OF SECTION 17 TOWNSHIP 28 NORTH RANGE 16 EAST THROUGH THE COMPUTED P.O.T. 795+79.10.

NORTH QUARTER CORNER OF SECTION 17, T-28-N, R-16-E, I.M. FOUND AND ACCEPTED A 1/2" IRON PIN SET BY PERSONS UNKNOWN. SET THREE REFERENCES.

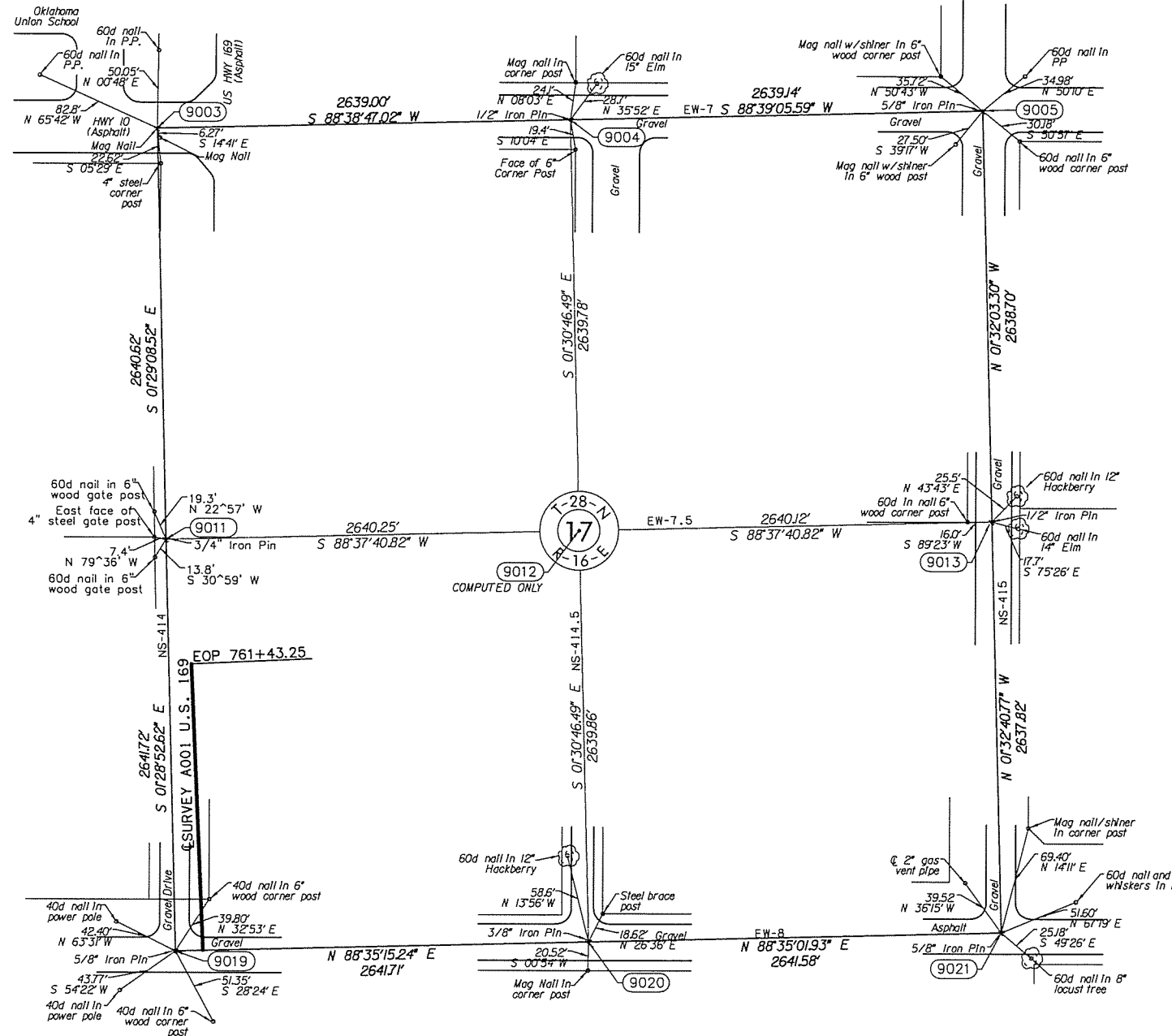
NORTHEAST CORNER OF SECTION 17, T-28-N, R-16-E, I.M. FOUND AND ACCEPTED A 5/8" IRON PIN AND 4 REFERENCES LISTED ON A CERTIFIED CORNER RECORD FILED BY R. GARY WALKER OF CORNERSTONE REGIONAL SURVEYING LLC ON FEBRUARY 3, 2006.

WEST QUARTER CORNER OF SECTION 17, T-28-N, R-16-E, I.M. FOUND AND ACCEPTED A 3/4" IRON PIN AND 1 REFERENCE LISTED ON A CERTIFIED CORNER RECORD FILED BY GUY R. BUCKLAND OF BUCKLAND SURVEYING COMPANY, INC. ON NOVEMBER 5, 2005. SET 2 REFERENCES.

EAST QUARTER CORNER OF SECTION 17, T-28-N, R-16-E I.M. FOUND AND ACCEPTED A 1/2" IRON PIN WITH YELLOW CAP STAMPED LS 1323 AND TWO REFERENCES LISTED ON A CERTIFIED CORNER RECORD FILED BY R. GARY WALKER OF CORNERSTONE REGIONAL SURVEYING LLC ON FEBRUARY 3, 2006. SET ONE REFERENCE.

SOUTHWEST CORNER OF SECTION 17, T-28-N, R-16-E I.M. FOUND AND ACCEPTED A 5/8" IRON PIN AND 4 REFERENCES LISTED ON A CERTIFIED CORNER RECORD FILED BY GUY R. BUCKLAND OF BUCKLAND SURVEYING COMPANY, INC. ON NOVEMBER 5, 2008.

SOUTHEAST CORNER OF SECTION 17, T-28-N, R-16-E, I.M. FOUND AND ACCEPTED A 5/8" IRON PIN AND FOUR REFERENCES AS LISTED ON A CERTIFIED CORNER RECORD FILED BY R. GARY WALKER OF CORNERSTONE REGIONAL SURVEYING LLC ON FEBRUARY 3, 2006.



SOUTH QUARTER CORNER OF SECTION 17, T-28-N, R-16-E, I.M. FOUND AND ACCEPTED A 3/8" IRON PIN SET BY PERSONS UNKNOWN. SET THREE REFERENCES.



SCALE: 1" = 500'

NOTE: REFERENCE'S SHOWN ARE NOT TO SCALE

PLS	DMM	OKLAHOMA DEPARTMENT OF TRANSPORTATION SURVEY DIVISION SURVEY DATA SHEET (12) SWO 4721(1) PROJECT NO. 247501041 SHEET NO. 46
DRAWN	ARR	
CHECKED	VKM	
APPROVED	DMM	
CREW	GES, INC.	