

OKLAHOMA DEPARTMENT OF TRANSPORTATION				
FED. ROAD DIST. NO.	STATE	PROJ. NO.	FISCAL YEAR	SHEET NO. TOTAL SHEETS
8	OKLA.	24750(04)		45 127
DESCRIPTION		REVISIONS		
		DATE		

NORTHWEST CORNER OF SECTION 18, T-28-N, R-16 E, I.M. FOUND AND ACCEPTED A MAG NAIL AND TWO REFERENCES LISTED ON A CERTIFIED CORNER RECORD FILE BY GUY R. BUCKLAND OF BUCKLAND SURVEYING COMPANY, LLC ON NOVEMBER 5, 2008. SET ONE REFERENCE.

NORTH QUARTER CORNER OF SECTION 18, T-28-N, R-16-E, I.M. SET A MAG NAIL WITH SHINER STAMPED "CA-1427", POSITION DETERMINED BY SINGLE PROPORTIONATE MEASUREMENT. SET THREE REFERENCES.

NORTHEAST CORNER OF SECTION 18, T-28-N, R-16-E, I.M. FOUND AND REJECTED A MAG NAIL SET BY PERSONS UNKNOWN. SET MAG NAIL WITH SHINER STAMPED "CA-1427" AND THREE REFERENCES.

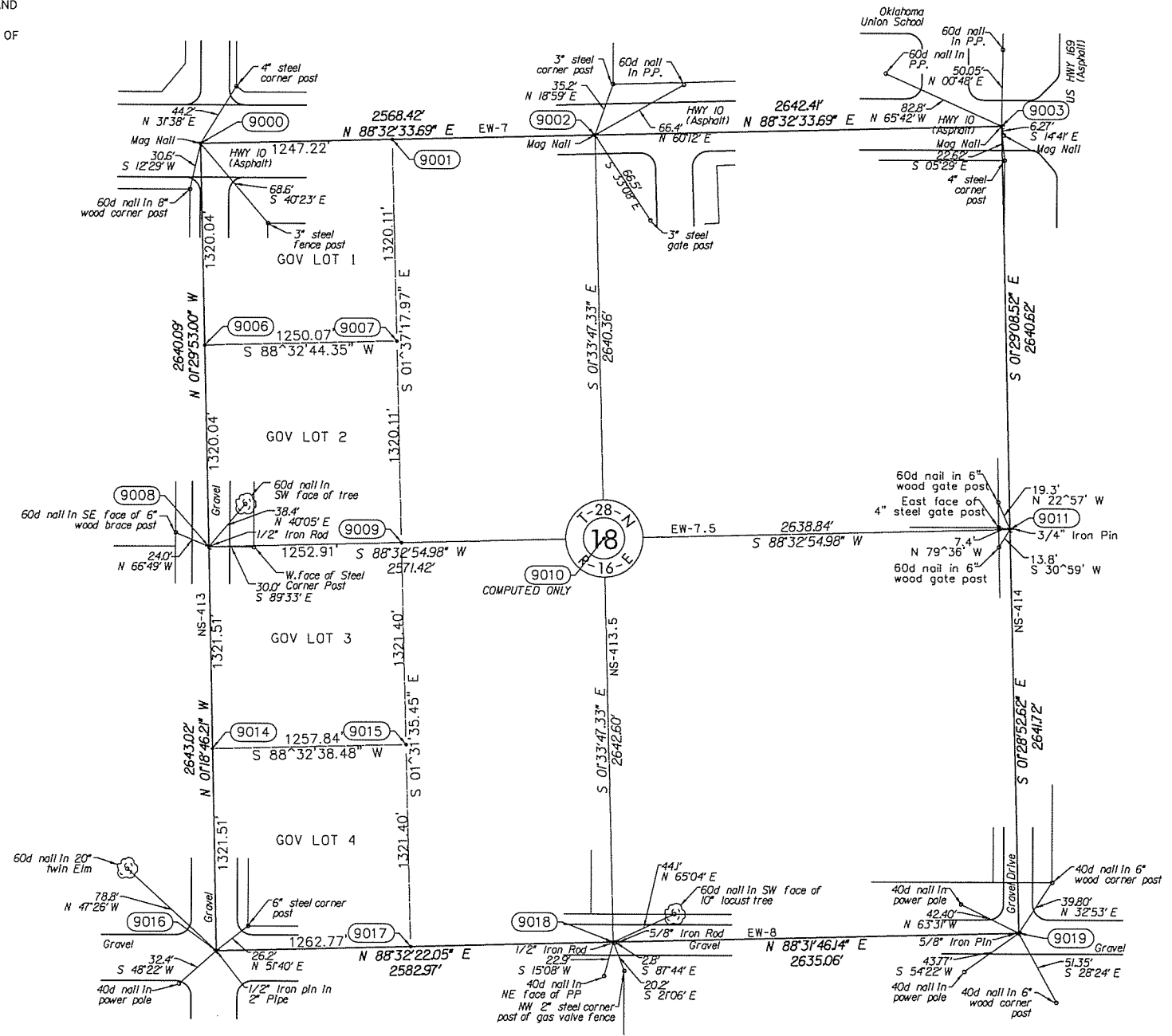
THE POSITION WAS ESTABLISHED BY USING A SURVEY PERFORMED BY THE SETTLE ENGINEERING COMPANY FOR THE OKLAHOMA DEPARTMENT OF TRANSPORTATION DURING 1956 TO 1959. THE SURVEY IS NAMED SWO 2137(1). THE SURVEY SHOWS AN ANGLE AND DISTANCE FROM A P.O.T. AT STATION 795+79.10 ESTABLISHED AT THE INTERSECTION OF THE NORTH LINE OF SECTION 17 TOWNSHIP 28 NORTH RANGE 16 EAST AND THE CENTERLINE OF SURVEY. P.O.T. 795+79.10 NOR ANY REFERENCES WERE RECOVERED. P.O.T. 795+79.10 WAS COMPUTED FROM POINTS RECOVERED NORTH AND SOUTH ALONG THE CENTERLINE OF SURVEY. THE POINT SOUTH IS A P.T. AT STATION 777+43.85. THE POINT NORTH IS A P.O.T. AT STATION 799+01.10. ALTHOUGH THE POINTS THEMSELVES WERE NOT RECOVERED, REFERENCE PIN LINES WERE FOUND IN CONDITION. FIELD MEASURE BETWEEN THE POINTS RESULTED IN A DISTANCE OF 2156.27'. THE SURVEY REFLECTS A DISTANCE OF 2157.25'. A PROPORTIONED POSITION WAS COMPUTED FOR P.O.T. 795+79.10. AN ANGLE OF 89°55'02" WAS MEASURED BETWEEN A LINE BEGINNING AT THE COMPUTED P.O.T. 795+79.10 TO THE NORTH QUARTER CORNER OF SECTION 17 TOWNSHIP 28 NORTH RANGE 16 EAST AND THE CENTERLINE OF SURVEY. THE SURVEY REFLECTS AN ANGLE OF 89°55'. THE SURVEY REFLECTS A DISTANCE OF 99.60' FROM THE P.O.T. 795+79.10 AND THE NORTHWEST CORNER OF SECTION 17 TOWNSHIP 28 NORTH RANGE 16 EAST. THE POSITION WAS ESTABLISHED AT 99.60' FROM THE COMPUTED P.O.T. 795+79.10 AT A BEARING RUNNING FROM THE NORTH QUARTER CORNER OF SECTION 17 TOWNSHIP 28 NORTH RANGE 16 EAST THROUGH THE COMPUTED P.O.T. 795+79.10.

WEST QUARTER CORNER OF SECTION 18, T-28-N, R-16-E, I.M. FOUND AND ACCEPTED A 1/2" IRON ROD AS LISTED ON A CERTIFIED CORNER RECORD FILED BY GUY R. BUCKLAND, LS 1323 OF BUCKLAND SURVEYING COMPANY, INC. ON NOVEMBER 5, 2008. THIS POSITION WAS RECORDED AS LOST. FOUND 1 REFERENCE SET BY PERSONS UNKNOWN. SET TWO REFERENCES.

EAST QUARTER CORNER OF SECTION 18, T-28-N, R-16-E, I.M. FOUND AND ACCEPTED A 3/4" IRON PIN AND 1 REFERENCE LISTED ON A CERTIFIED CORNER RECORD FILED BY GUY R. BUCKLAND OF BUCKLAND SURVEYING COMPANY, INC. ON NOVEMBER 5, 2005. SET 2 REFERENCES.

SOUTHWEST CORNER OF SECTION 18, T-28-N, R-16-E I.M. FOUND AND ACCEPTED A 1/2" IRON PIN INSIDE OF A 2" PIPE AND ONE REFERENCE LISTED ON A CERTIFIED CORNER RECORD FILED BY GUY R. BUCKLAND OF BUCKLAND SURVEYING COMPANY, INC. ON MARCH 20, 2007. SET TWO REFERENCES.

SOUTH QUARTER CORNER OF SECTION 18, T-28-N, R-16-E I.M. FOUND AND ACCEPTED A 1/2" IRON ROD AND 3 REFERENCES AS LISTED ON A CERTIFIED CORNER RECORD FILED BY GUY R. BUCKLAND, LS 1323, OF BUCKLAND SURVEYING COMPANY, INC. ON NOVEMBER 5, 2008. SET ONE REFERENCE.



SCALE: 1" = 500'

NOTE: REFERENCE'S SHOWN ARE NOT TO SCALE

PLS	DMM	OKLAHOMA DEPARTMENT OF TRANSPORTATION SURVEY DIVISION
DRAWN	ARR	
CHECKED	VKM	
APPROVED	DMM	
CREW	GES, INC.	
SURVEY DATA SHEET (11)		
SWO 4721(1) PROJECT NO. 24750(04) SHEET NO. 45		