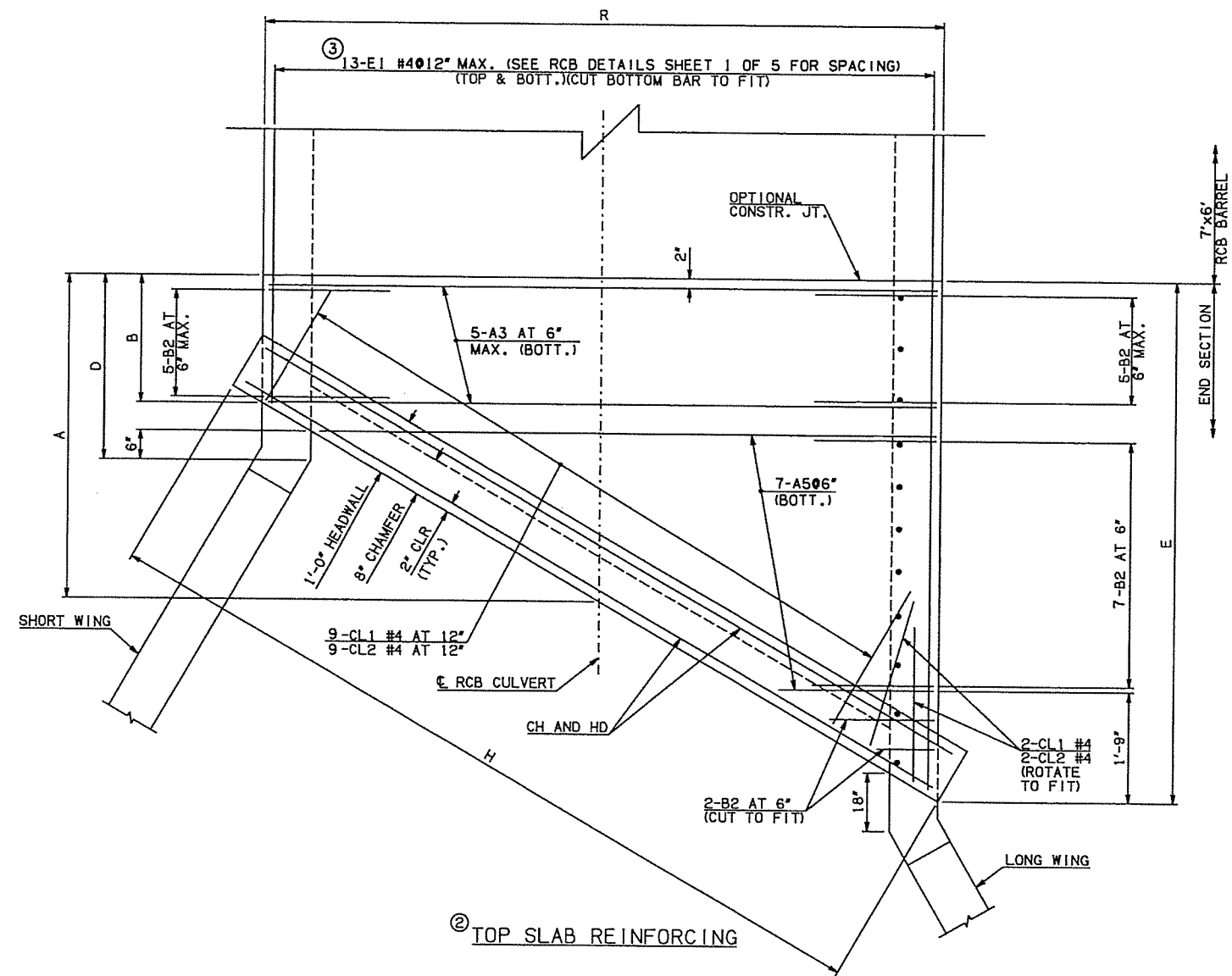
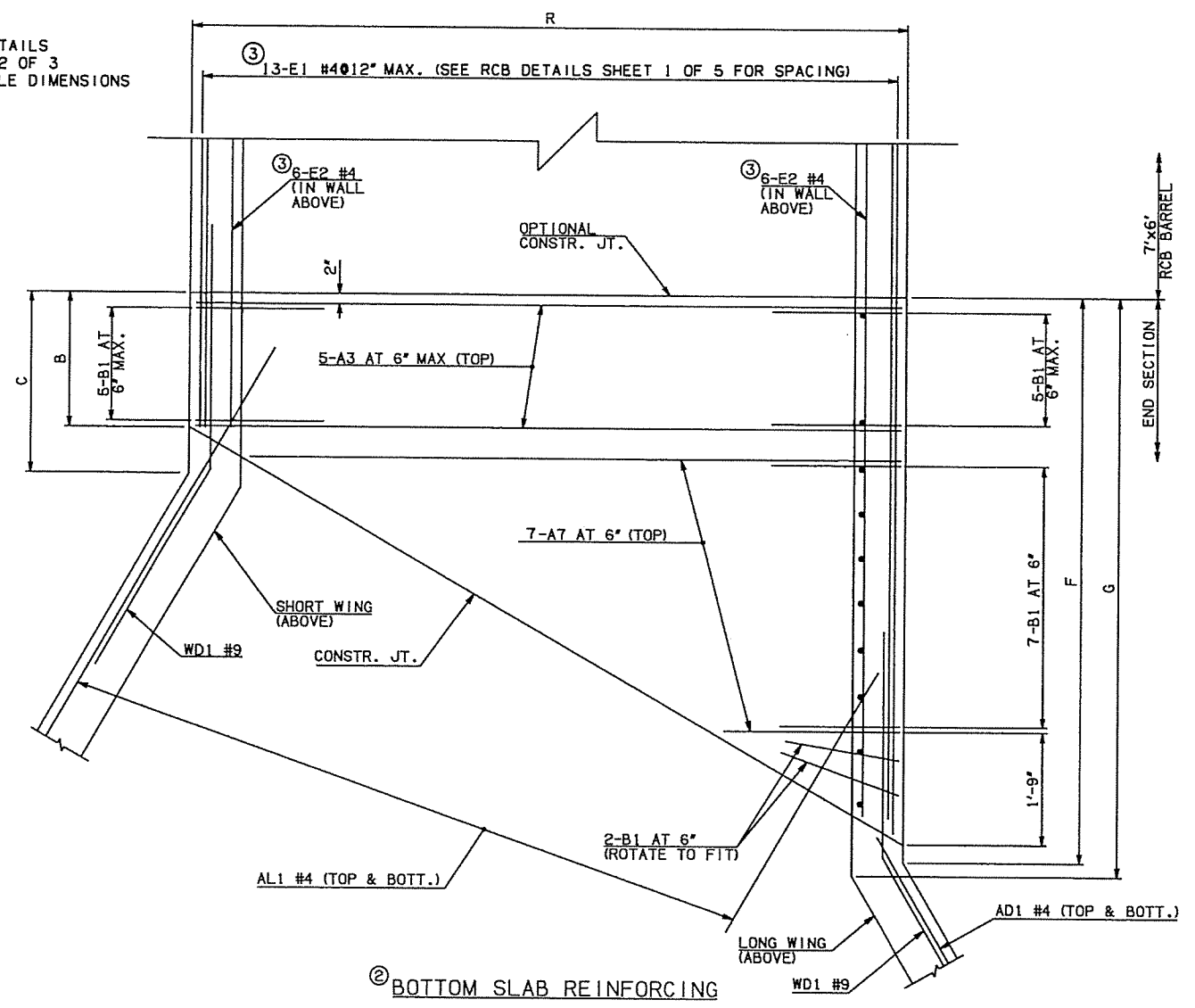


7/12/2016 11:27:29 AM P:\ECN650-TUL\CVI\255231000-0001-USI69B-dg\20_DESGN\0-CAD_Opossum\CON\Box\27092(04)_RCB_Def_03.dgn



SEE RCB DETAILS SHEET NO. 2 OF 3 FOR VARIABLE DIMENSIONS



② TOP SLAB REINFORCING

② BOTTOM SLAB REINFORCING

W	A	B	C	CW	D	E	F	G	H	LW	R	SW
10"	5'-0"	2'-6"	3'-3"	45'-1 3/8"	3'-5 3/4"	7'-6"	8'-3 3/4"	8'-6 1/4"	10'-7"	41'-6 3/8"	8'-8"	23'-3 1/4"

ITEM	UNIT	7' SPAN
CLASS AA CONCRETE	CY.	37.80
REINFORCING STEEL	LBS.	5500.00

NOTE:
 QUANTITIES ABOVE ARE FOR ONE END SECTION, WHICH IS COMPRISED OF ONE END CONNECTION, ONE HEADWALL, ONE APRON, AND TWO WINGWALLS.

ONE SHOWN, ONE REQUIRED					
MARK	SIZE	FORM	QTY.	LENGTH	REMARKS
A3	#7	STR.	10	8'-4"	
A5	#7	STR.	7	5'-2" (AVG.)	2'-6" TO 7'-9"
A7	#7	STR.	7	5'-0" (AVG.)	2'-6" TO 7'-6"
B1	#5	BNT.	19	3'-3"	
B2	#5	BNT.	19	7'-7"	
E1	#4	STR.	26	4'-10" (AVG.)	2'-1" TO 7'-6"
E2	#4	STR.	12	4'-8" (AVG.)	2'-1" TO 7'-2"

- NOTES:**
- ① QUANTITY SHOWN REPRESENTS TWO SETS.
 - ② FOR FURTHER INFORMATION REGARDING END SECTION BARS A, B, C, E1, AND E2, REFER TO RCB DETAILS SHEET 1 OF 5.
 - ③ LENGTHS OF E1 AND E2 BARS SHOWN ARE ADDITIONAL LENGTHS REQUIRED FOR THE END SECTION. LAP SPLICES, AS REQUIRED, SHALL BE IN ACCORDANCE WITH RCB BARREL STANDARD NOTES.
 - ④ 2-SETS OF 13-E1#4 BARS REQUIRED.
 - ⑤ QUANTITY SHOW REPRESENTS 2-SETS OF E2 BARS WITH LENGTHS AS SHOWN CORRESPONDING TO SHORT EXTERIOR WALL AND LONG EXTERIOR WALL.