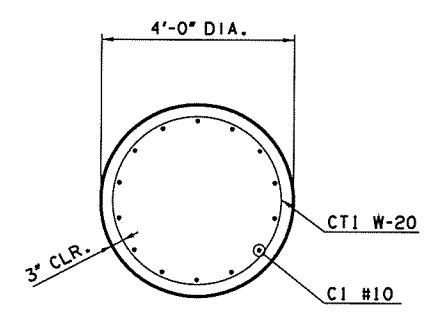
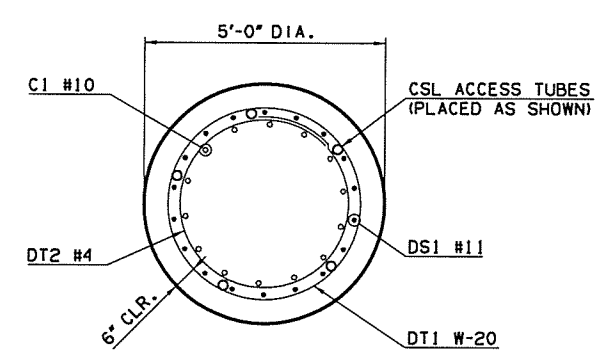


SECTION A-A
SCALE: 3/4" = 1'-0"

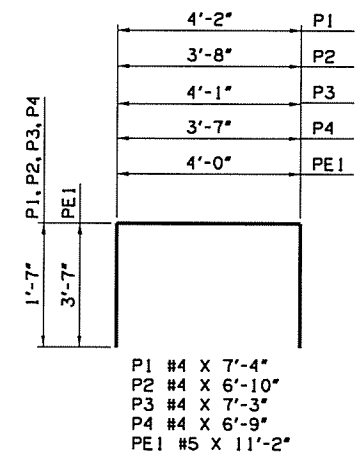
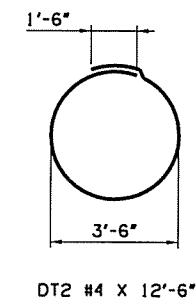
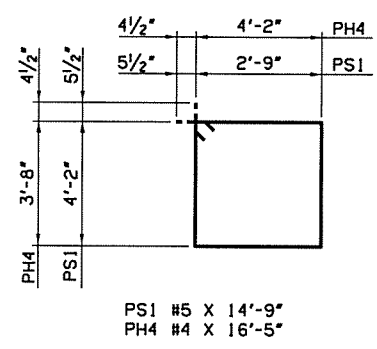
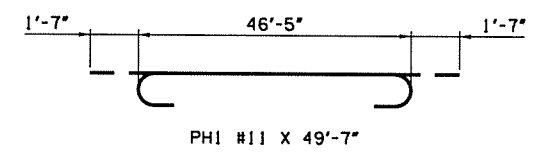


SECTION B-B
SCALE: 1/2" = 1'-0"



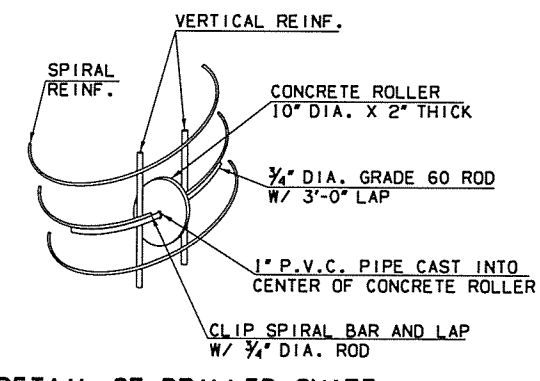
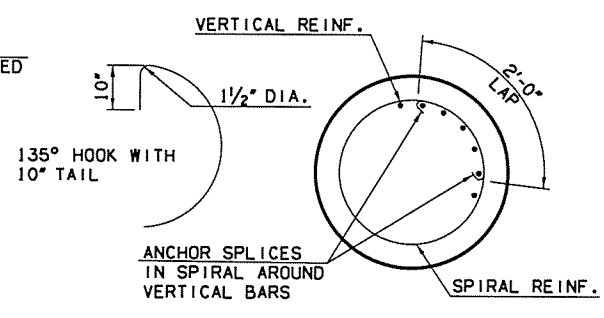
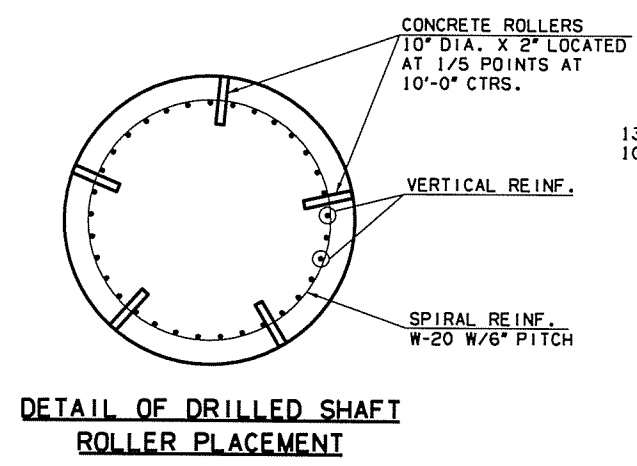
SECTION C-C
SCALE: 1/2" = 1'-0"

- ① APPLY CIM 1000 "SPECIAL CONCRETE FINISH", TO SURFACES INDICATED, INCLUDING TOP OF PIER CAP, ALL SURFACES OF THE PEDESTALS, AND DOWN 6" BELOW THE EDGE OF THE CAP ON THE SIDES AND END FACES.
- ② TREAT ALL EXTERIOR VERTICAL SURFACES OF THE PIER CAPS WITH A PENETRATING WATER REPELLENT SURFACE TREATMENT. (CIM 1000 WILL OVERLAP WATER REPELLENT NEAR TOP OF CAP.)
- ③ MASK SIDES AND ENDS OF PIER CAP ALONG THIS LINE TO PROVIDE A CLEAN STRAIGHT FINISH AT BOTTOM OF CIM 1000 APPLICATION.



PIER NO. 1 BAR LIST (ONE REQUIRED)					
EPOXY COATED REINFORCING					
MARK	SIZE	QTY.	FORM	LENGTH	REMARKS
C1	#10	28	STR	26'-6"	
PH1	#11	8	BNT	49'-7"	
PH2	#11	8	STR	46'-5"	
PH3	#5	6	STR	46'-5"	
PH4	#4	2	BNT	16'-5"	
PE1	#5	6	BNT	11'-2"	
PS1	#5	84	BNT	14'-9"	
P1	#4	10	BNT	7'-4"	SEE NOTE 2
P2	#4	12	BNT	6'-10"	SEE NOTE 2
P3	#4	5	BNT	7'-3"	SEE NOTE 2
P4	#4	6	BNT	6'-9"	SEE NOTE 2
PLAIN REINFORCING					
MARK	SIZE	QTY.	FORM	LENGTH	REMARKS
CT1	W20	2	BNT	284'-2"	
DT2	#4	26	BNT	12'-6"	
DRILLED SHAFT PLAIN REINFORCING					
MARK	SIZE	QTY.	FORM	LENGTH	REMARKS
DS1	#11	36	STR	27'-0"	SEE NOTE 1
DT1	W20	2	BNT	722'-0"	SEE NOTE 1

PIER NO. 2 BAR LIST (ONE REQUIRED)					
EPOXY COATED REINFORCING					
MARK	SIZE	QTY.	FORM	LENGTH	REMARKS
C1	#10	28	STR	26'-6"	
PH1	#11	8	BNT	49'-7"	
PH2	#11	8	STR	46'-5"	
PH3	#5	6	STR	46'-5"	
PH4	#4	2	BNT	16'-5"	
PE1	#5	6	BNT	11'-2"	
PS1	#5	84	BNT	14'-9"	
P1	#4	10	BNT	7'-4"	SEE NOTE 2
P2	#4	12	BNT	6'-10"	SEE NOTE 2
P3	#4	5	BNT	7'-3"	SEE NOTE 2
P4	#4	6	BNT	6'-9"	SEE NOTE 2
PLAIN REINFORCING					
MARK	SIZE	QTY.	FORM	LENGTH	REMARKS
CT1	W20	2	BNT	284'-0"	
DT2	#4	26	BNT	12'-6"	
DRILLED SHAFT PLAIN REINFORCING					
MARK	SIZE	QTY.	FORM	LENGTH	REMARKS
DS1	#11	36	STR	25'-6"	SEE NOTE 1
DT1	W20	2	BNT	684'-0"	SEE NOTE 1



NOTE:
SPIRAL BARS SHALL CONFORM TO AASHTO M32. SPIRAL BAR LENGTH INCLUDE LAPS.

NOTE:
CONCRETE USED IN CONCRETE ROLLERS SHALL HAVE A MINIMUM 28 DAY COMPRESSIVE STRENGTH OF 4000 P.S.I.. SLAB BOLSTERS, HIGH CHAIRS AND PLASTIC ROLLERS SHALL NOT BE SUBSTITUTED FOR THE CONCRETE ROLLERS.

- NOTE:**
1. DRILLED SHAFT BARS ARE FOR INFORMATION PURPOSES ONLY. THE BARS ARE NOT INCLUDED IN THE QUANTITIES, BUT ARE INCLUDED IN THE PRICE BID FOR L.F. OF DRILLED SHAFTS.
 2. PEDESTAL REINFORCING NOT REQUIRED AT PEDESTALS 1 AND 5.
 3. INCLUDE COST FOR CROSSHOLE SONIC LOGGING ACCESS TUBES IN THE PRICE BID FOR L.F. OF DRILLED SHAFTS.
 4. ALL EDGES OF PIER CAP SHALL HAVE A 1/2" CHAMFER EXCEPT FOR PEDESTAL EDGES WHICH SHALL HAVE A 3/4" CHAMFER.

Design	STF	6/16	US 169 OVER OPOSSUM CREEK OVER FLOW NOWATA COUNTY BRIDGE B PIER DETAILS (SHEET 2 OF 2)
Drawn	JT	6/16	
Checked	DAS	6/16	
Approved	SAK	6/16	
Squad	BENHAM		
Job Piece No. 27092(04) Sheet No. 78			

7/12/2016 11:27:00 AM P:\EG\1650-TUL\CI\255231000-000T-US1659-dg\20_DESGN\40_CAD_Opossum\000\AS\Bridg 2\27092(04)_S_2_Pier_1.2_Def_0.dgn