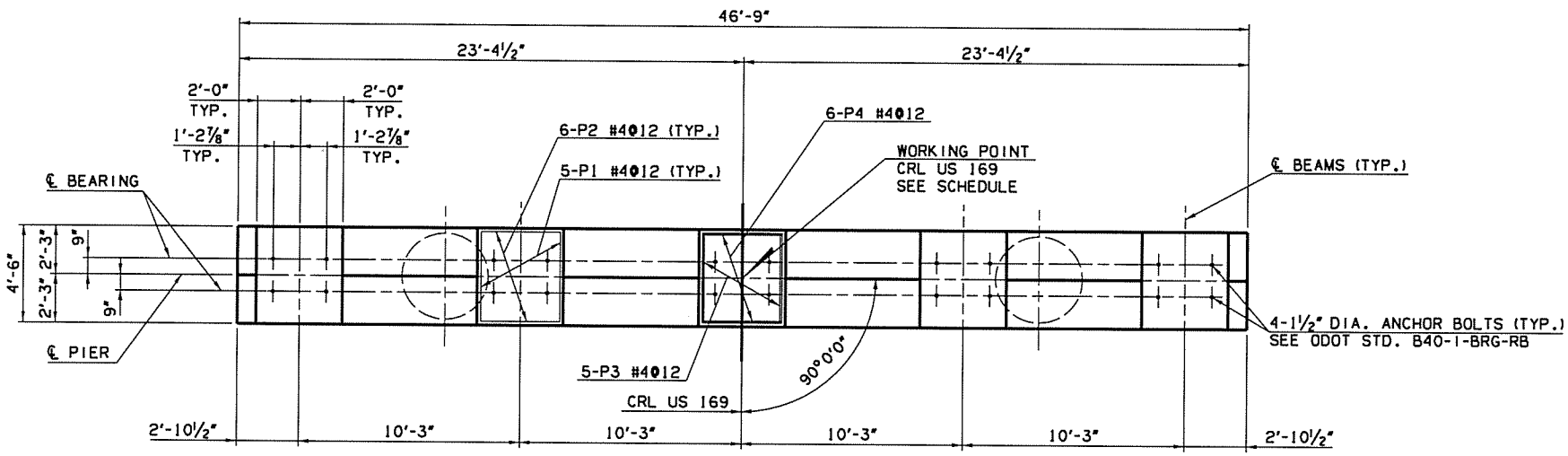


7/12/2016

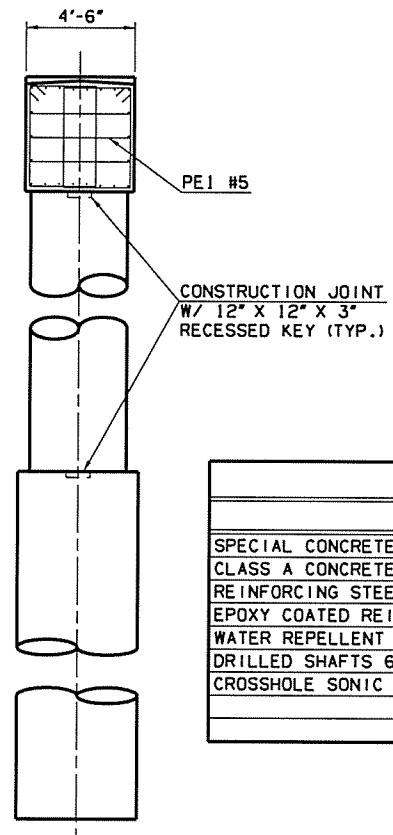
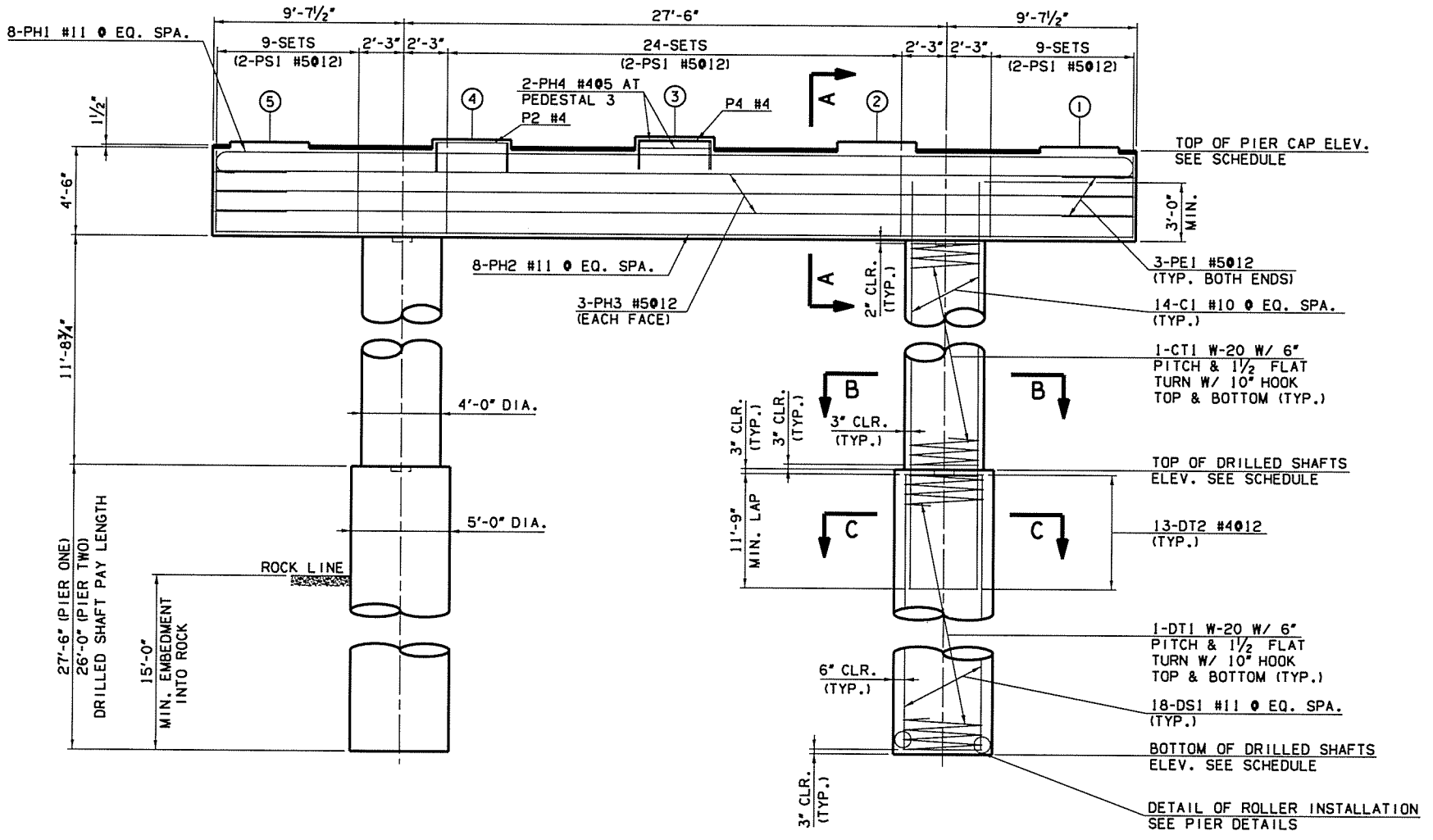
11:27:00 AM

P:\EG\1650-TUL\CI\165025231000-000T-US169BR-dg\20_DESGN\40_CAD_Opossum\DDNS\Brl\Edge_2\27092(04)_S.2_Pier-1.2_Plan-01.dgn

DOT DIVISION	STATE	J/P PROJ NO	FISCAL YEAR	SHEET NO	TOTAL SHEETS
8	OKLA	27092(04)		77	143



PIER STATIONS AND ELEVATIONS SCHEDULE			
PIER NO. 1			
PEDESTAL NO.	ELEVATION	WORKING POINT STATION	ELEVATION
1	707.52	863+71.7500	---
2	707.72	TOP OF PIER	707.35
3	707.93	TOP OF DRILLED SHAFTS	691.00
4	707.72	BOT. OF DRILLED SHAFTS	663.50
5	707.52		
PIER NO. 2			
PEDESTAL NO.	ELEVATION	WORKING POINT STATION	ELEVATION
1	707.52	864+26.7500	---
2	707.72	TOP OF PIER	707.35
3	707.93	TOP OF DRILLED SHAFTS	691.00
4	707.72	BOT. OF DRILLED SHAFTS	665.00
5	707.52		



PIER QUANTITIES				
ITEM	UNIT	PIER NO. 1	PIER NO. 2	TOTAL
SPECIAL CONCRETE FINISH	SY	33	33	66
CLASS A CONCRETE	CY	47.8	47.8	95.6
REINFORCING STEEL	LB	610	610	1220
EPOXY COATED REINFORCING STEEL	LB	9110	9110	18220
WATER REPELLENT (VISUALLY INSPECTED)	SY	46	46	92
DRILLED SHAFTS 60" DIAMETER	LF	55	52	107
CROSSHOLE SONIC LOGGING	EA			1

- NOTE:**
- ADJUST PH BARS AS NEEDED TO PROVIDE A MINIMUM OF 4" CLEARANCE FOR TREMIE AND CLEARANCE FOR ANCHOR BOLTS.
 - SEE ODOT STD. B40-1-BRG-RB FOR BEARING. USE 55' SPAN BEARING FOR ALL SPANS.

Design	STF	6/16	US 169 OVER OPOSSUM CREEK OVER FLOW NOWATA COUNTY BRIDGE B PIER DETAILS (SHEET 1 OF 2)
Drawn	JT	6/16	
Checked	DAS	6/16	
Approved	SAK	6/16	
Squad	BENHAM		

Job Piece No. 27092(04) Sheet No. 77