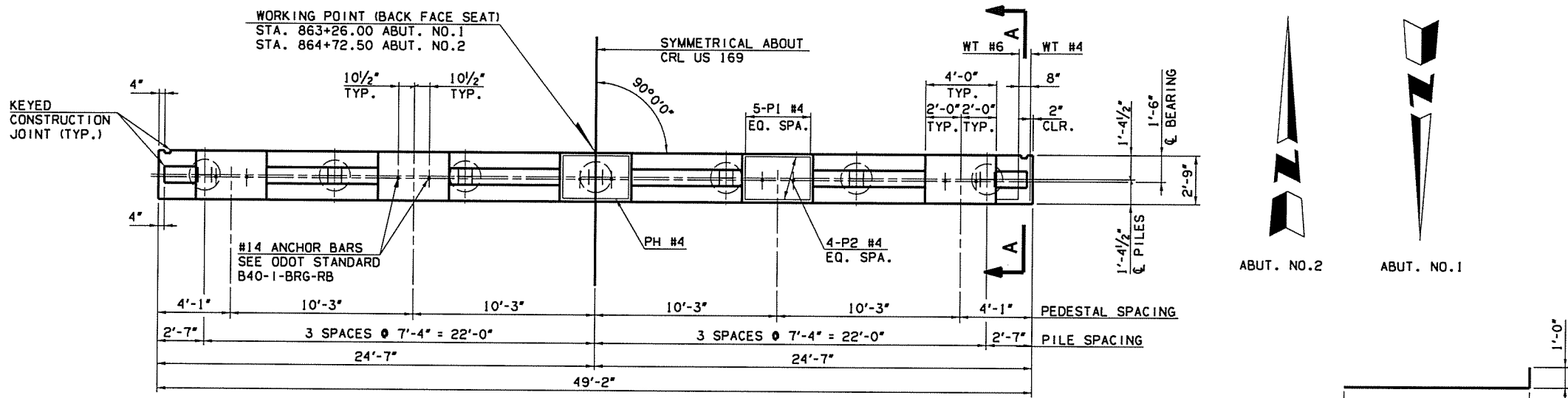


7/12/2016

11:26:58 AM

P:\ECN\650-TUL\CV\255231000_000T_US169BR-dg-20_DESGN\40_CAD_Opossum\DRNS\Bridg 2\27092(04)_S.2_Abut_1,2_Plan_01.dgn

DOT DIVISION	STATE	J/P PROJ NO	FISCAL YEAR	SHEET NO	TOTAL SHEETS
8	OKLA	27092(04)		73	143



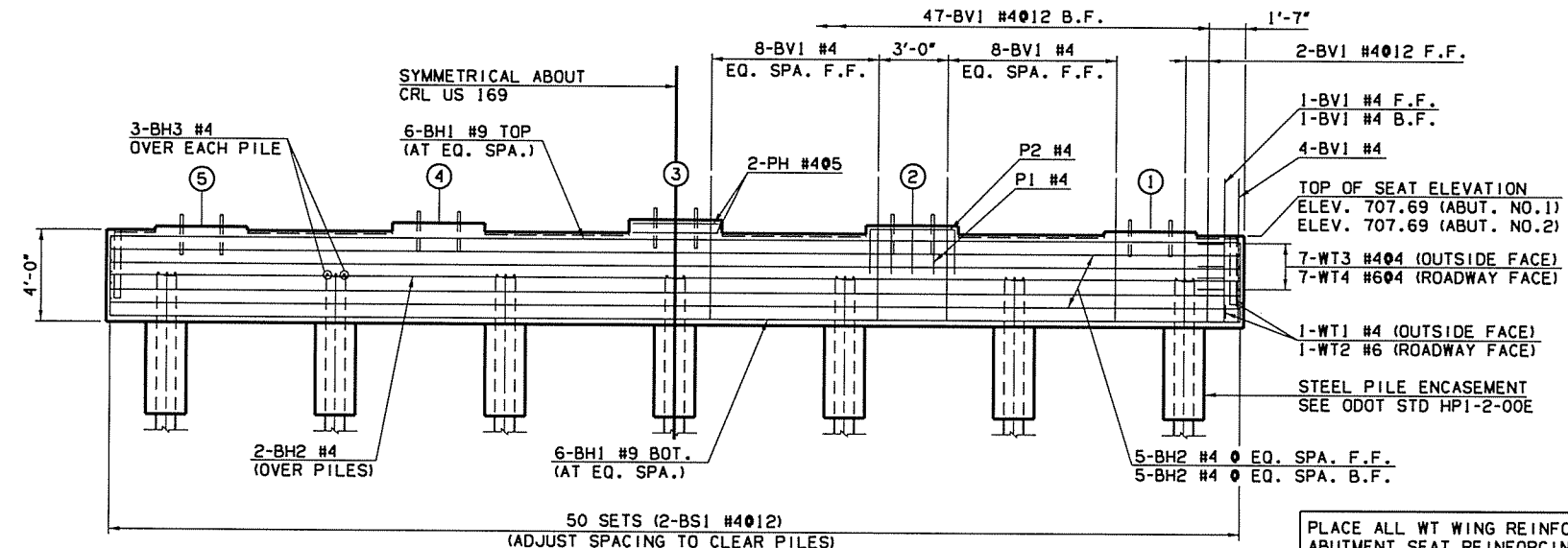
ABUTMENT NO. 2 LOOKING UP STATION
ABUTMENT NO. 1 LOOKING DOWN STATION OPP. HAND
PLAN - ABUTMENT NO.1 AND NO.2
SCALE: 1/4" = 1'-0"

ABUTMENT BAR LIST
(ONE ABUTMENT SHOWN, TWO REQUIRED)

EPOXY COATED REINFORCING

MARK	SIZE	QTY.	FORM	LENGTH	REMARKS
BV1	#4	95	STR	6'-3"	
BH1	#9	12	STR	48'-10"	
BH2	#4	12	STR	48'-10"	
BH3	#4	21	BNT	3'-7"	
BS1	#4	100	BNT	11'-5"	
WT1	#4	2	BNT	5'-2"	
WT2	#6	2	BNT	7'-5"	
WT3	#4	14	STR	6'-10" (AVG.)	4'-0" TO 9'-8" SEE NOTE 1
WT4	#6	14	BNT	7'-10" (AVG.)	5'-0" TO 10'-8" SEE NOTE 1
P1	#4	15	BNT	5'-6"	SEE NOTE 2
P2	#4	12	BNT	6'-9"	SEE NOTE 2
PH	#4	2	BNY	12'-11"	

- NOTES:**
- (2) SETS OF 7
 - OMIT REINFORCING IN 2" PEDESTALS.



ABUTMENT NO. 2 LOOKING UP STATION
ABUTMENT NO. 1 LOOKING DOWN STATION OPP. HAND
ELEVATION
SCALE: 1/4" = 1'-0"

PLACE ALL WT WING REINFORCING TIED TO ABUTMENT SEAT REINFORCING BEFORE PLACING ABUTMENT SEAT CONCRETE. DO NOT PLACE ABUTMENT WING CONCRETE UNTIL CONCRETE FOR THE ABUTMENT DIAPHRAGM AND DECK SLAB HAVE ATTAINED A STRENGTH OF 3000 P.S.I.

PEDESTAL ELEVATIONS

PEDESTAL	ELEVATIONS	
	ABUT. NO.1	ABUT. NO.2
1	707.86	707.86
2	708.07	708.07
3	708.27	708.27
4	708.07	708.07
5	707.86	707.86

ABUTMENT QUANTITIES

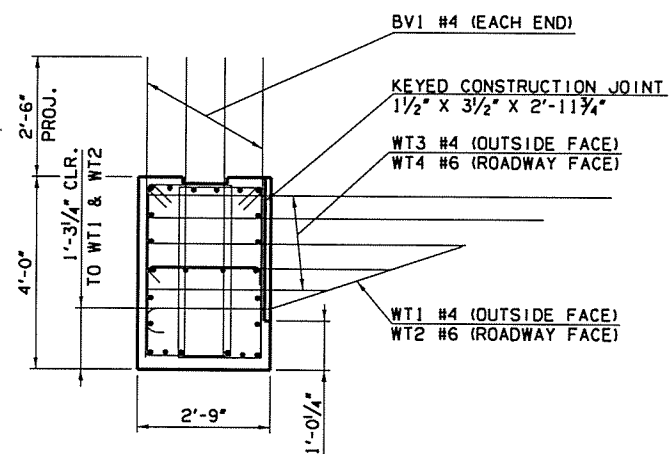
ITEM	UNIT	ABUT NO.1	ABUT NO. 2	TOTAL
SUBSTRUCTURE EXCAVATION COMMON	CY	45	45	90
CLSM BACKFILL	CY	64.0	64.0	128.0
CLASS A CONCRETE	CY	25.7	25.7	51.4
EPOXY COATED REINFORCING STEEL	LB	4680	4680	9360
PILES, FURNISHED (HP10X42)	LF	210	196	406
PILES, DRIVEN (HP10X42)	LF	210	196	406
METAL PILE SHOES	EA	7	7	14
WATER REPELLENT (VISUALLY INSPECTED)	SY	25	25	50
TYPE 1-A PLAIN RIPRAP	TON	630	620	1250
TYPE 1-A FILTER BLANKET	TON	100	100	200
FILTER FABRIC (RIPRAP)	SY	417	405	822
6" PERFORATED PIPE UNDERDRAIN ROUND	LF	50	50	100
6" NON-PERF. PIPE UNDERDRAIN RND.	LF	40	40	80

- NOTES:**
- SEE ODOT STD. B40-1-BRG-RB FOR BEARING DETAILS. USE 55' SPAN BEARING FOR ALL SPANS.

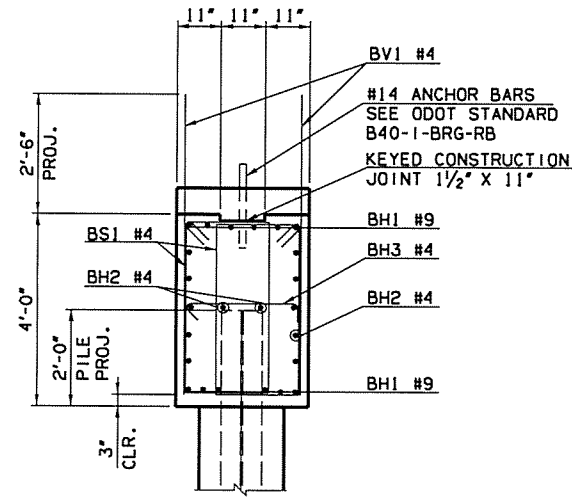
F.F. = FRONT FACE
B.F. = BACK FACE

Design	STF	6/16	US 169 OVER OPOSSUM CREEK OVER FLOW NOWATA COUNTY BRIDGE B ABUTMENT DETAILS (SHEET 1 OF 4)
Drawn	RAH	6/16	
Checked	DAS	6/16	
Approved	SAK	6/16	
Squad	BENHAM		

Job Piece No. 27092(04) Sheet No. 73



SECTION A-A
SCALE: 1/2" = 1'-0"



TYPICAL SECTION THRU SEAT
SCALE: 1/2" = 1'-0"

