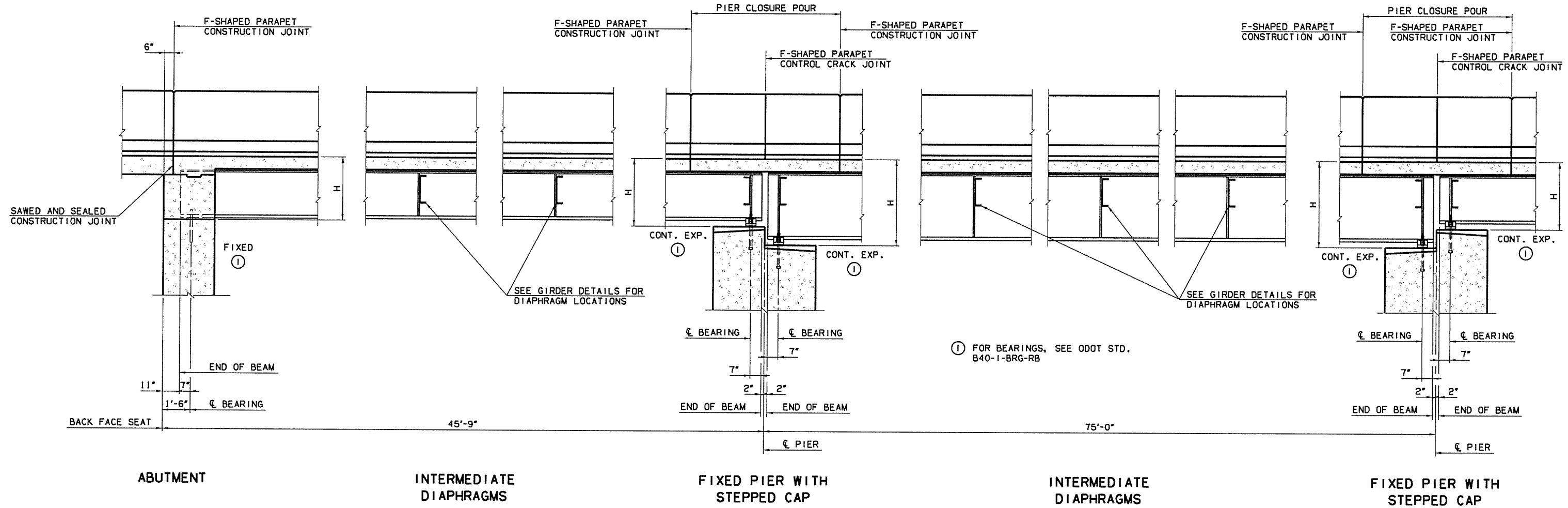


7/12/2016

11:26:49 AM

P:\E\1650-TULI\CDV\255230000.0001_US169BR-dg\20_DESGN\40_CAD_Opossum\00KNS\Brdge\1\27092\041.S.I.LongSect.0.dgn

DOT DIVISION	STATE	J/P PROJ NO	FISCAL YEAR	SHEET NO	TOTAL SHEETS
8	OKLA	27092(04)		65	143



LONGITUDINAL SECTION
SCALE: 3/8" = 1'-0"

LOCATION	H
ABUTMENT NO. 1	3'-8 3/4"
PIER NO. 1 DWN STA	4'-1 3/8"
PIER NO. 1 UP STA	4'-7 3/4"
PIER NO. 2 DWN STA	4'-7 3/4"
PIER NO. 2 UP STA	4'-1 3/8"
ABUTMENT NO. 2	3'-8 3/4"

INSTALL ALL DIAPHRAGMS AND TIGHTEN ALL BOLTS BEFORE PLACING CONCRETE FOR THE DECK SLAB OR APPLYING OTHER MASSIVE LOADS TO THE BEAMS.

NOTES:
1. H DIMENSION IS FROM TOP OF DECK SLAB TO BOTTOM OF BEARING ASSEMBLY AT ϵ BEARING.

Design	MKR	6/16	US 169 OVER OPOSSUM CREEK	NOWATA COUNTY
Drawn	WZB	6/16	BRIDGE A	
Checked	KSJ	6/16	LONGITUDINAL SECTION	
Approved	SAK	6/16		
Squad	BENHAM			
			Job Piece No. 27092(04)	Sheet No. 65