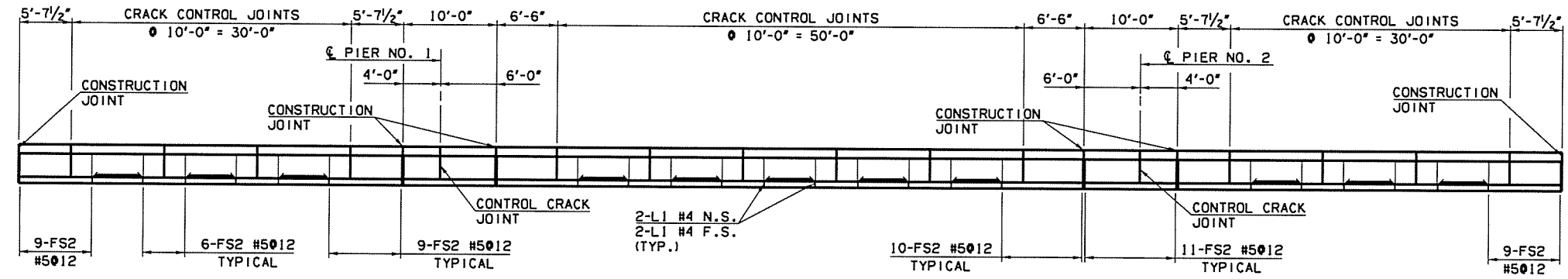


DOT DIVISION	STATE	J/P PROJ NO	FISCAL YEAR	SHEET NO	TOTAL SHEETS
8	OKLA	27092(04)		61	143

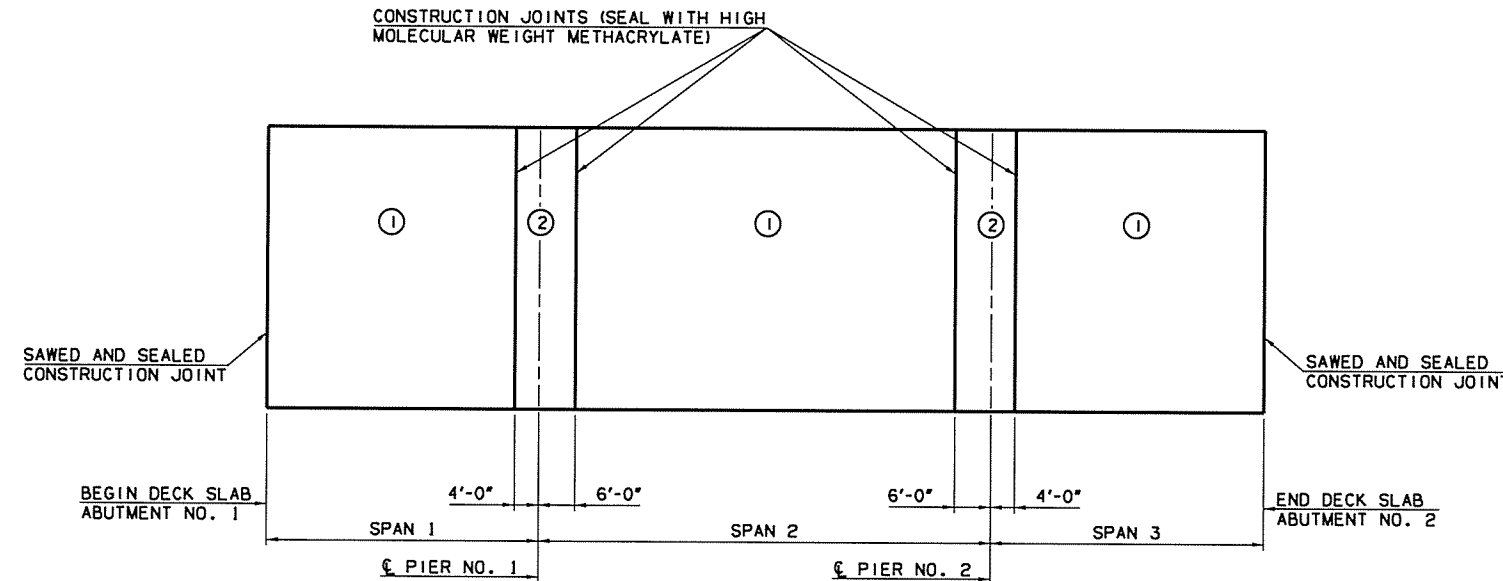


**F-SHAPED PARAPET ELEVATION**  
SCALE: 1/8" = 1'-0"

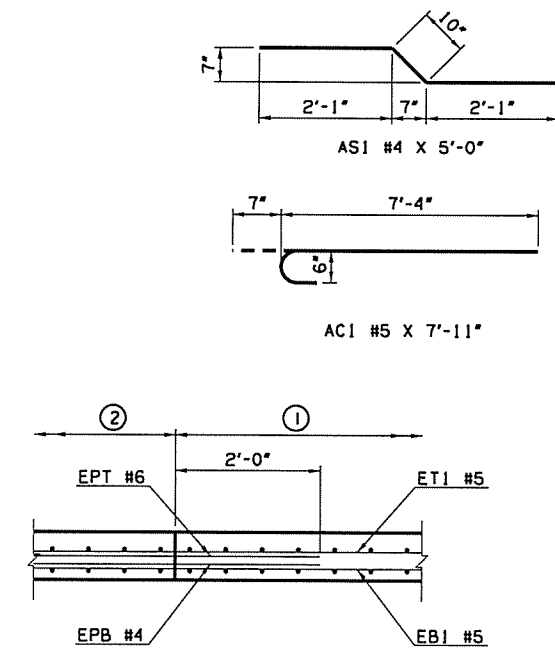
SUPERSTRUCTURE BAR LIST (ONE REQUIRED)					
EPOXY COATED REINFORCING					
MARK	SIZE	QTY.	FORM	LENGTH	REMARKS
ET1	#5	95	STR.	172'-11"	SEE NOTE 1
EB1	#5	95	STR.	174'-11"	SEE NOTE 2
EPT	#6	95	STR.	14'-0"	LAPS WITH ET1
EPB	#4	95	STR.	14'-0"	LAPS WITH EB1
A1	#4	292	BNT.	47'-8"	
A2	#6	22	BNT.	48'-0"	
A3	#5	40	BNT.	47'-10"	
AC1	#5	582	BNT.	7'-11"	
B1	#5	332	STR.	46'-8"	
AS1	#4	190	BNT.	5'-0"	LAPS WITH ET1
FS2	#5	252	BNT.	7'-4"	SEE NOTE 3
L1	#4	88	BNT.	1'-3"	SEE NOTE 3

**NOTES:**

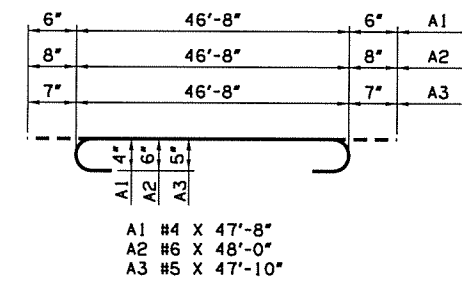
1. INCLUDES 3 - 2'-7" MIN. LAPS.
2. INCLUDES 3 - 3'-3" MIN. LAPS.
3. SEE ODOT STD. FSHP-42-2.



**DECK SLAB POURING SEQUENCE DIAGRAM**



**CONSTRUCTION JOINT DETAIL**  
SCALE: 3/4" = 1'-0"



**NOTES:**

1. EPOXY-COAT OR GALVANIZE STEEL ITEMS USED TO FACILITATE CONSTRUCTION, SUCH AS DECK FORM HANGERS, TY-BAR CLIPS, INSERT WELD ANCHORS, OR OTHER APPURTENANCES, THAT WILL REMAIN IN PLACE IN THE DECK SLAB. EPOXY-COAT IN ACCORDANCE WITH AASHTO M284 OR GALVANIZE IN ACCORDANCE WITH AASHTO M111.
2. PLACE DECK SLAB CONCRETE ONE SECTION AT A TIME CONSISTENT WITH THE DECK SLAB POURING SEQUENCE DIAGRAM. IN THE EVENT OF AN EMERGENCY, HALT THE PLACEMENT OF CONCRETE BY FORMING A CONSTRUCTION JOINT MADE PERPENDICULAR TO THE DIRECTION OF THE TRAFFIC OR AS DIRECTED BY THE ENGINEER. DO NOT PLACE ANY HEAVY EQUIPMENT ON THE FINISHED DECK SLAB WITHIN 5 FEET OF ANY CONSTRUCTION JOINT UNTIL THE CONCRETE IS IN PLACE ON BOTH SIDES OF THE RESPECTIVE JOINT AND AT LEAST 48 HOURS HAS ELAPSED SINCE CONCRETE PLACEMENT. CONSTRUCTION JOINTS AT THE CLOSURE POURS IN THE DECK SLAB SHALL NOT BE KEYED.
3. BARS SHALL BE CONTINUOUS THRU CONSTRUCTION JOINTS AT FIXED PIERS. DO NOT LAP WITHIN 10 FEET OF CENTERLINE OF FIXED PIER. ADDITIONAL LONGITUDINAL REINFORCING WITHIN CLOSURE POURS SHALL BE CONTINUOUS THROUGH EMERGENCY CONSTRUCTION JOINTS.
4. SEAL ALL DECK SLAB CONSTRUCTION JOINTS WITH HIGH MOLECULAR WEIGHT METHACRYLATE IN ACCORDANCE WITH SECTION 523 OF THE SPECIFICATIONS. INCLUDE ALL COST OF EQUIPMENT AND LABOR FOR THE INSTALLATION OF THE HIGH MOLECULAR WEIGHT METHACRYLATE SEALER IN THE CONTRACT UNIT PRICE OF "SEALER CRACK PREPARATION". INCLUDE ALL COSTS OF THE HIGH MOLECULAR WEIGHT METHACRYLATE SEALER IN THE CONTRACT UNIT PRICE OF "SEALER RESIN". THE DEPARTMENT WILL NOT MEASURE THE PREPARATION AND SEALER OF EMERGENCY CONSTRUCTION JOINTS FOR PAYMENT.
5. DECK SLAB POURING SEQUENCE: THE DECK SLAB IS DIVIDED INTO SECTIONS BETWEEN CONSTRUCTION JOINTS AS SHOWN. PLACE THE DECK SLAB CONCRETE OF EACH SECTION IN THE NUMERICAL SEQUENCE INDICATED. SECTIONS OF THE DECK SLAB WITH THE SAME NUMBER MAY BE PLACED IN ANY ORDER. SECTIONS IN SEQUENCE 2 MAY BE PLACED BEFORE ALL OF SEQUENCE 1 ARE COMPLETED IF SEQUENCE 1 AT THE COMMON CONSTRUCTION JOINT IS COMPLETE. BUT UNDER NO CIRCUMSTANCES WILL A SECTION OF SEQUENCE 2 BE POURED BEFORE THE ADJACENT SECTIONS HAVE BEEN IN PLACE FOR AT LEAST 48 HOURS.

SUPERSTRUCTURE QUANTITIES		
ITEM	UNIT	TOTAL
SAW-CUT GROOVING	SY	809.2
42" F-SHAPED PARAPET	LF	331.0
STRUCTURAL STEEL	LB	175440
WEATHERING STEEL FIXED BEARING ASSEMBLY	EA	10
STAINLESS STEEL EXPANSION BEARING ASSEMBLY	EA	20
ELASTOMERIC BEARING PADS	EA	20
CLASS AA CONCRETE	CY	229.6
EPOXY COATED REINFORCING STEEL	LB	76150
WATER REPELLENT (VISUALLY INSPECTED)	SY	440
SEALER CRACK PREPARATION	LF	188
SEALER RESIN	GAL	1.3

Design	MKR	6/16	US 169 OVER OPOSSUM CREEK	NOWATA COUNTY
Drawn	JT	6/16	BRIDGE A	
Checked	KSJ	6/16	<b>SUPERSTRUCTURE DETAILS</b>	
Approved	SAK	6/16	<b>(SHEET 1 OF 4)</b>	
Squad	BENHAM		Job Piece No. 27092(04)	Sheet No. 61