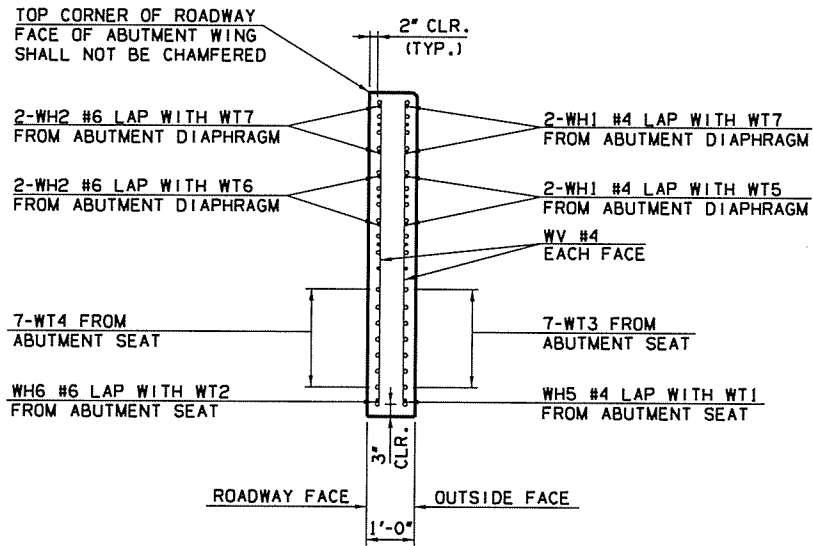
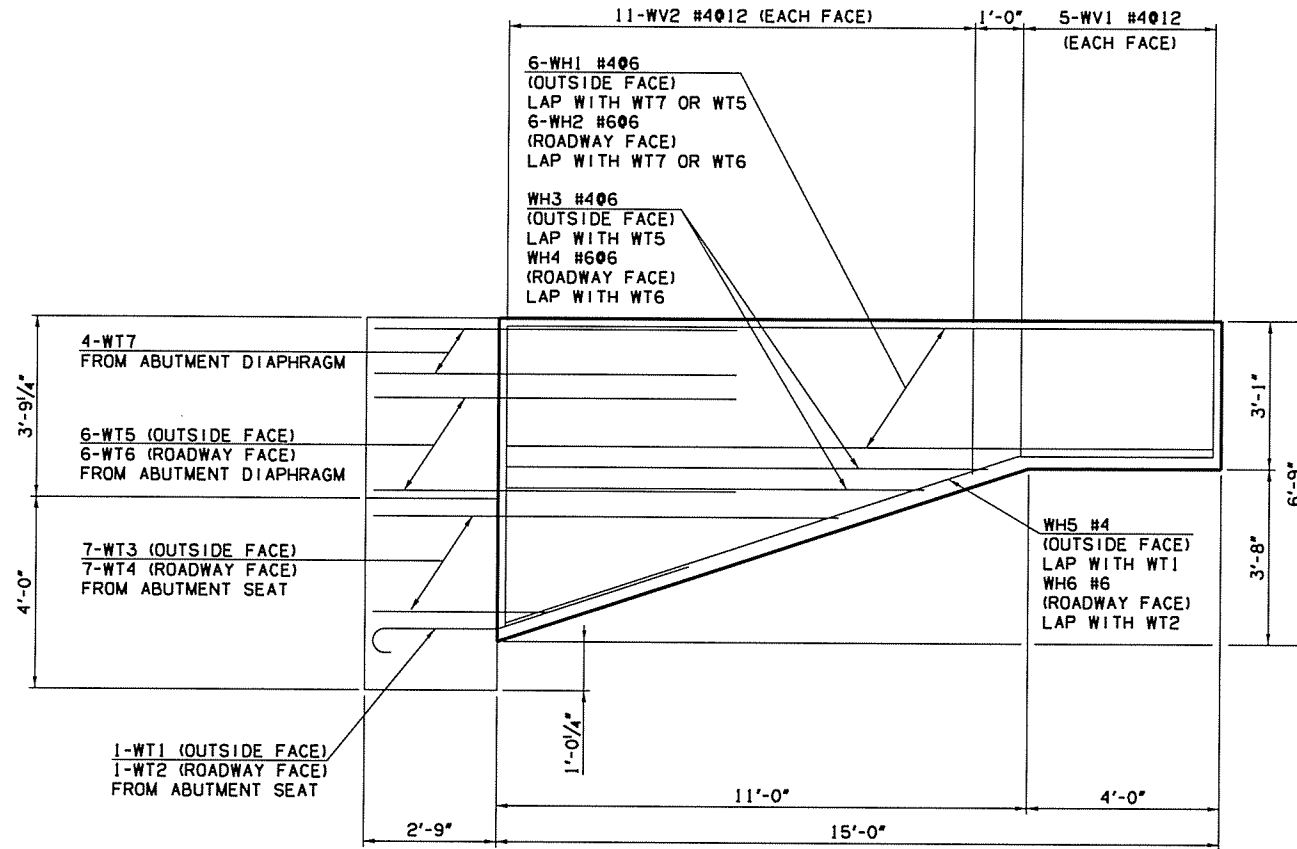


CONTRACT DIVISION	STATE	FISCAL YEAR	PROJECT NO.	SHEET NO.	TOTAL SHEETS
8	OKLA	27092(04)		58	143



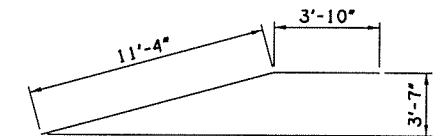
**SECTION THRU WINGWALL AT  
BACK FACE OF ABUTMENT SEAT**  
SCALE: 1/2" = 1'-0"



**WINGWALL RIGHT ELEVATION**  
SCALE: 1/2" = 1'-0"

ABUTMENT WINGWALL BAR LIST (ONE WINGWALL SHOWN, FOUR REQUIRED)					
EPOXY COATED REINFORCING					
MARK	SIZE	QTY.	FORM	LENGTH	REMARKS
WH1	#4	6	STR.	14'-8"	
WH2	#6	6	STR.	14'-8"	
WH3	#4	2	STR.	9'-2" (AVG.)	8'-5" TO 9'-11"
WH4	#6	2	STR.	9'-2" (AVG.)	8'-5" TO 9'-11"
WH5	#4	1	BNT.	15'-2"	
WH6	#6	1	BNT.	15'-2"	
WV1	#4	10	STR.	2'-8"	
WV2	#4	22	STR.	4'-7" (AVG.)	2'-11" TO 6'-3"

**NOTE:**  
1. (2) SETS OF 11



WH5 #4 X 15'-2"  
WH6 #6 X 15'-2"

PLACE ALL WT WING REINFORCING TIED TO ABUTMENT SEAT REINFORCING BEFORE PLACING ABUTMENT SEAT CONCRETE. DO NOT PLACE ABUTMENT WING CONCRETE UNTIL CONCRETE FOR THE ABUTMENT DIAPHRAGM AND DECK SLAB HAVE ATTAINED A STRENGTH OF 3000 P.S.I.

Design	STF	6/16	US 169 OVER OPOSSUM CREEK BRIDGE A <b>ABUTMENT DETAILS</b> (SHEET 4 OF 4) Job Piece No. 27092(04) Sheet No. 58
Drawn	RAH	6/16	
Checked	DAS	6/16	
Approved	SAK	6/16	
Squad	BENHAM		