

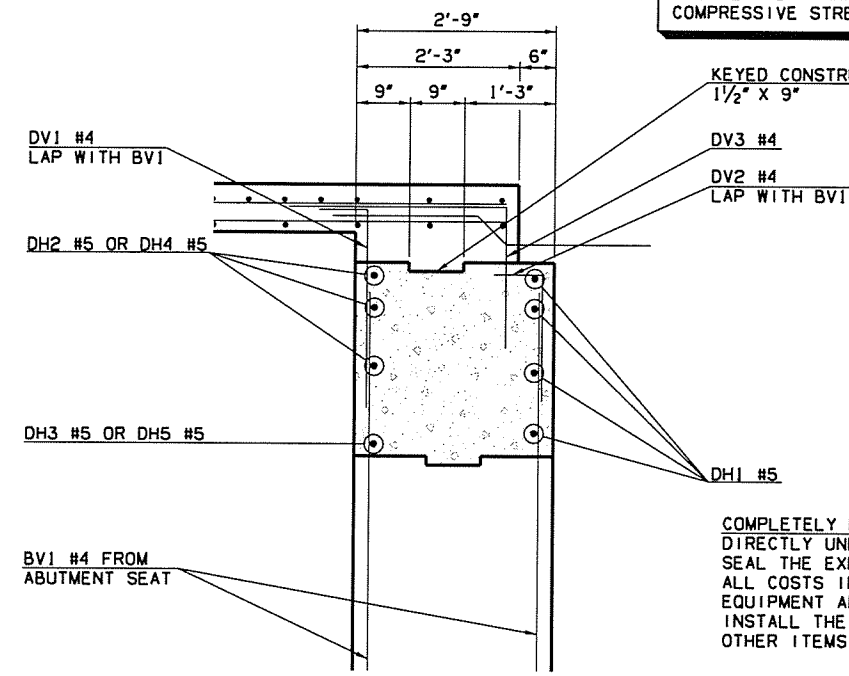
7/12/2016

11/26/13 AM

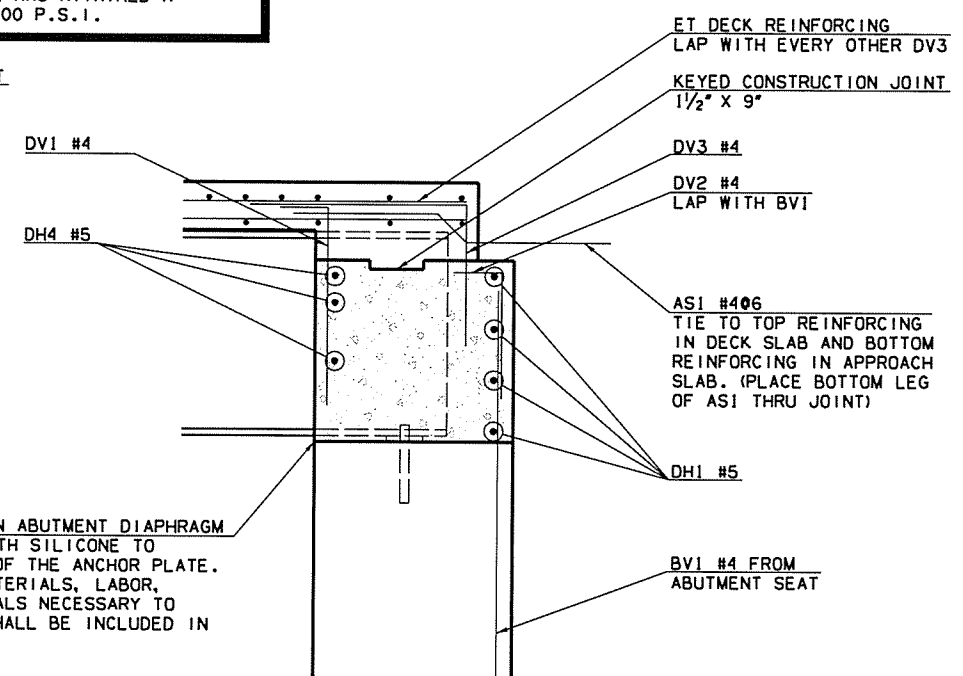
P:\E\1650-TUL\CI\255231000-000T-US169B-dg\20\_DESGN\40\_CAD\_Opossum\00\NS\BR1\lodge\27092\041.S.L-Abut.1.2-Def-01.dgn

ODOT DIVISION	STATE	J.P. PROJ. NO.	FISCAL YEAR	SHEET NO.	TOTAL SHEETS
8	OKLA	27092(04)		57	143

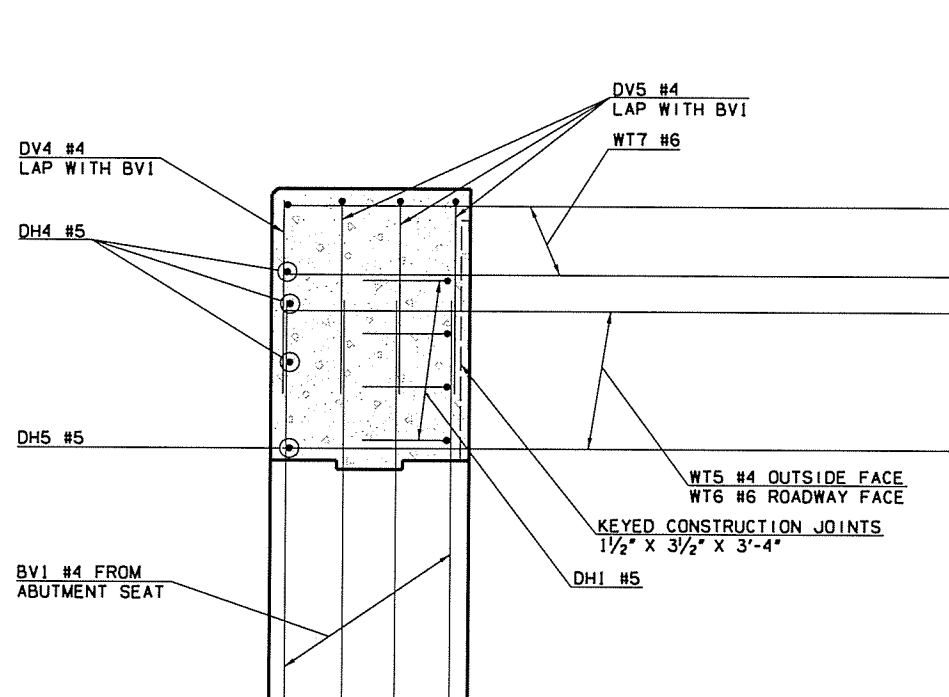
DECK SLAB SHOWN FOR INFORMATIONAL PURPOSES ONLY. DO NOT PLACE DECK SLAB CONCRETE UNTIL THE ABUTMENT DIAPHRAGM CONCRETE HAS ATTAINED A COMPRESSIVE STRENGTH OF 3,000 P.S.I.



**SECTION A-A**  
SCALE: 3/4" = 1'-0"

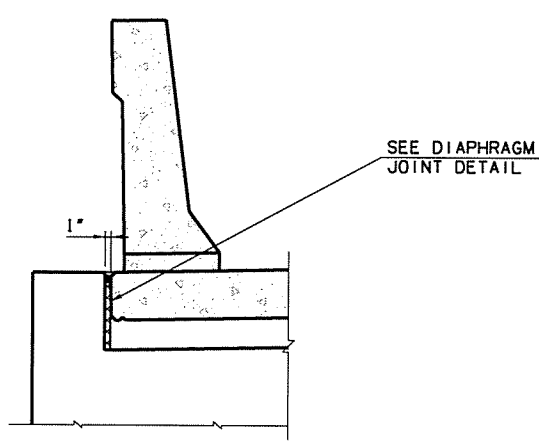


**SECTION B-B**  
SCALE: 3/4" = 1'-0"

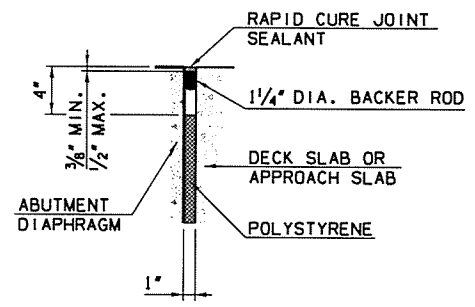


**SECTION C-C**  
SCALE: 3/4" = 1'-0"

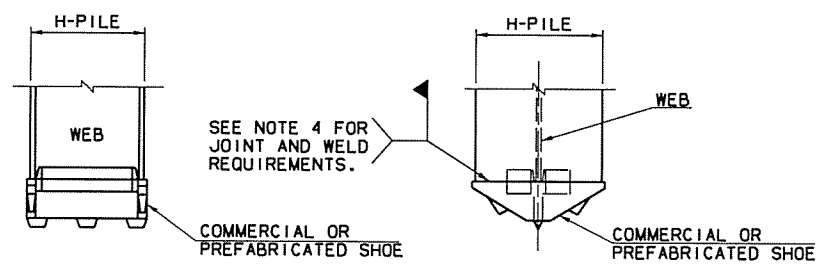
COMPLETELY FILL VOID IN ABUTMENT DIAPHRAGM DIRECTLY UNDER BEAM WITH SILICONE TO SEAL THE EXPOSED EDGE OF THE ANCHOR PLATE. ALL COSTS INCLUDING MATERIALS, LABOR, EQUIPMENT AND INCIDENTALS NECESSARY TO INSTALL THE SILICONE SHALL BE INCLUDED IN OTHER ITEMS OF WORK.



**SECTION D-D**  
SCALE: 3/4" = 1'-0"



**DIAPHRAGM JOINT DETAIL**  
SCALE: 1/2" = 1'-0"



- NOTES:**
1. COMMERCIAL OR PREFABRICATED SHOES ARE SUBJECT TO THE APPROVAL OF THE ENGINEER.
  2. THE SHOE SHALL BE ATTACHED BY AN ODOT CERTIFIED WELDER.
  3. THE SHOE WELD JOINT DESIGN SHALL BE DONE IN ACCORDANCE WITH THE MANUFACTURER'S RECOMMENDATION, AND AS APPROVED BY THE ENGINEER.
  4. IF SHOES ARE WELDED AT A LOCATION OTHER THAN THE PROJECT SITE, ALL OF THE ABOVE PROVISIONS SHALL APPLY TO THE OFFSITE FABRICATOR. THE ENGINEER SHALL BE NOTIFIED BY THE CONTRACTOR OF THE ACTUAL LOCATION WHERE THE WELDING WILL BE PERFORMED A MINIMUM OF 5 WORKING DAYS BEFORE WORK COMMENCES.
  5. ALL WELDING SHALL BE PERFORMED BY A CERTIFIED WELDER IN CONFORMANCE WITH REQUIREMENTS FOR WELDING AS SPECIFIED IN THE STANDARD SPECIFICATIONS.
  6. INCLUDE ALL COSTS OF MATERIAL, LABOR AND INCIDENTALS ASSOCIATED WITH FABRICATION AND INSTALLATION OF SHOES IN THE PRICE BID FOR EACH OF "METAL PILE SHOES".

**METAL PILE SHOE DETAIL**  
NOT TO SCALE

Design	STF	6/16	US 169 OVER OPOSSUM CREEK BRIDGE A <b>ABUTMENT DETAILS</b> (SHEET 3 OF 4) Job Piece No. 27092(04) Sheet No. 57	NOWATA COUNTY
Drawn	RAH	6/16		
Checked	DAS	6/16		
Approved	SAK	6/16		
Squad	BENHAM			